

Anna swinging crib

Instruction manual



John Lewis

Important - Retain for future reference - please read carefully

Thank you for purchasing this Anna swinging crib. Please read the instructions and warnings carefully before use to ensure safe and satisfactory operation of this product.

Your child's safety is your responsibility. If you have a query with this product or require replacement parts, please contact your nearest John Lewis department store.

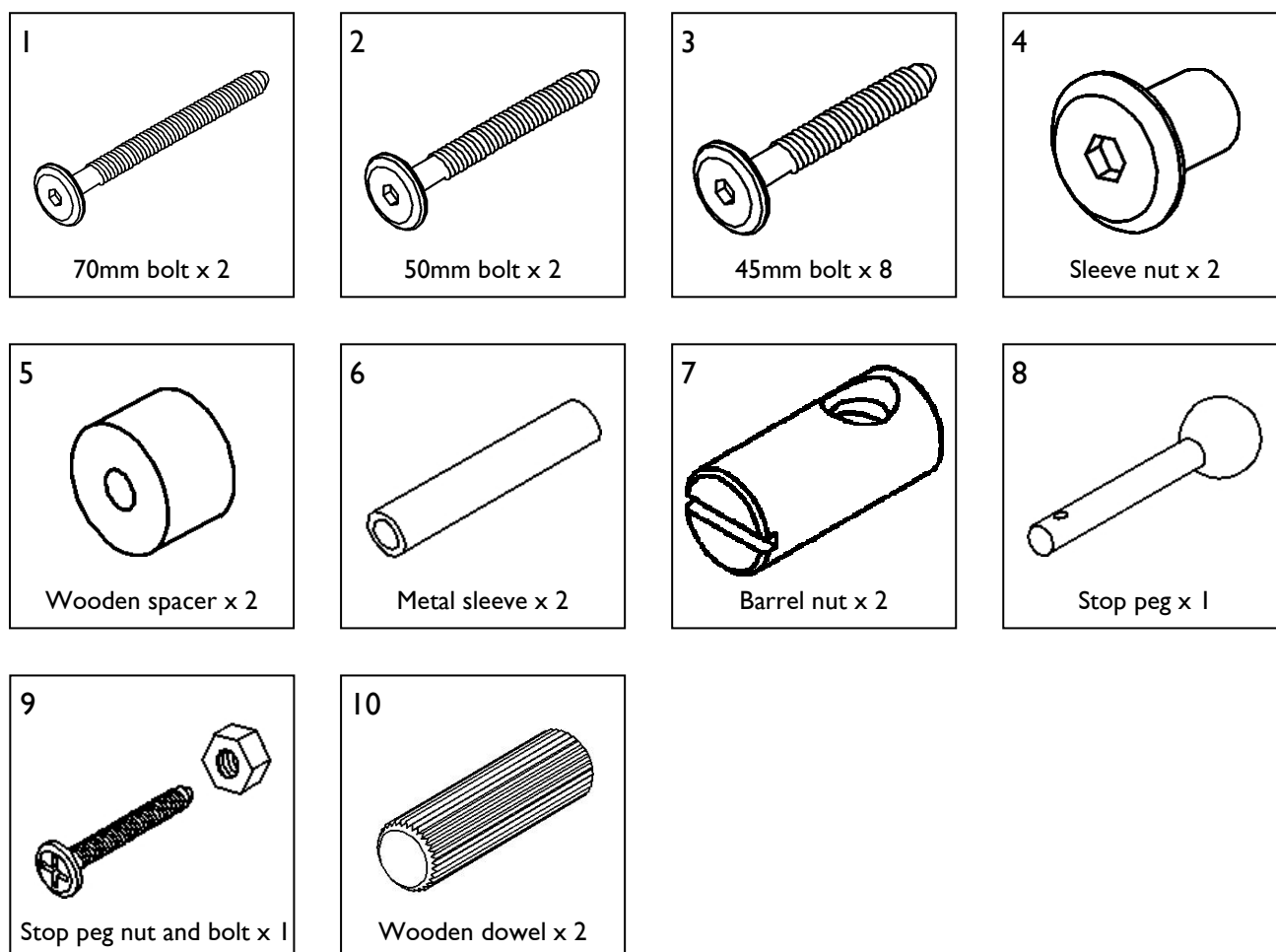
Lay out the parts on a soft level surface and compare to the part/fixings checklist on pages 2 & 3. Do not discard any packaging until you are sure that you have all the parts.

Ensure that your child is kept clear during assembly due to small parts.

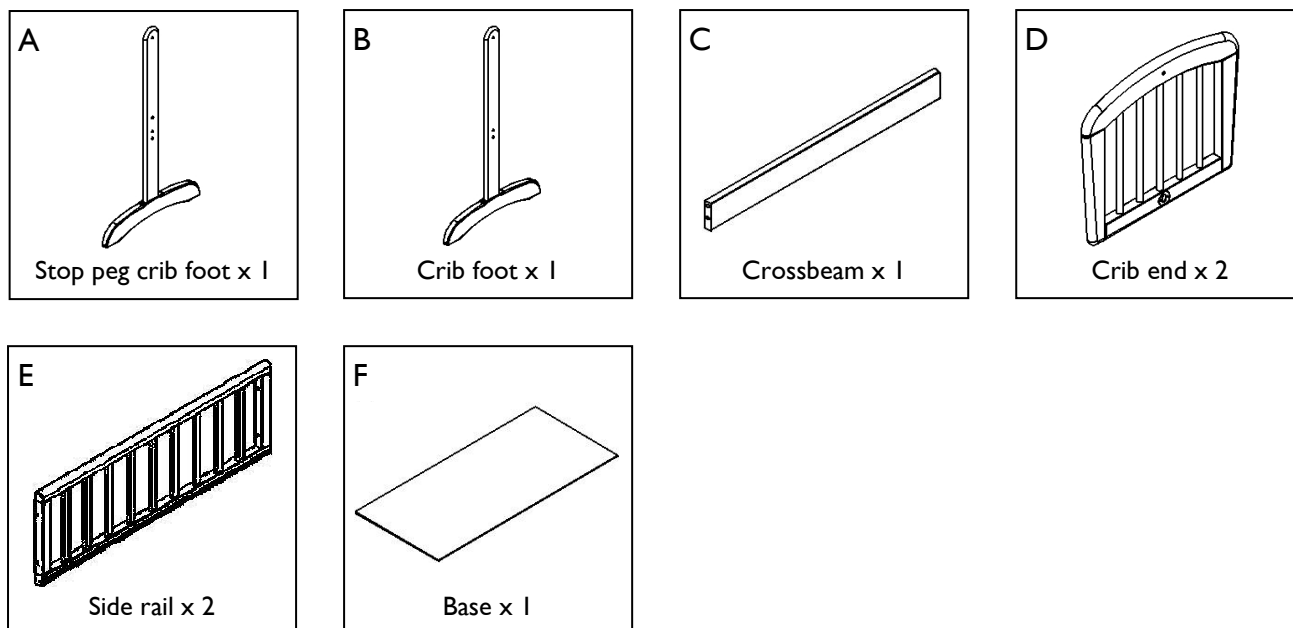
Recommended mattress: 38 x 89cm

This product complies with BS EN 1130-1: 1996

Fixings



Parts

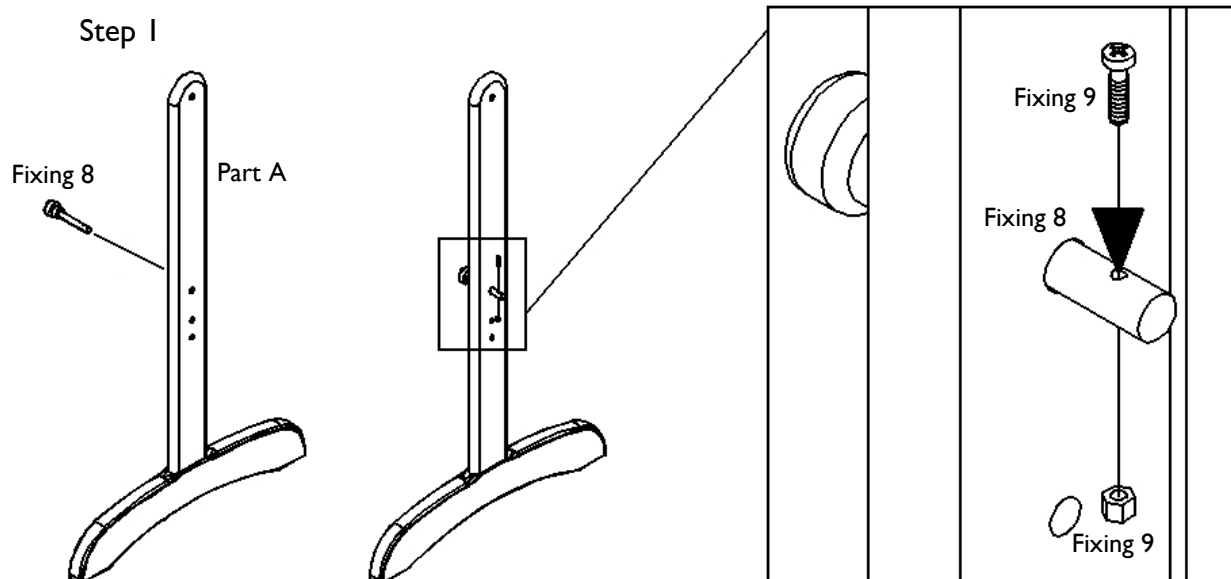


You will need:

1 x Cross-headed screwdriver

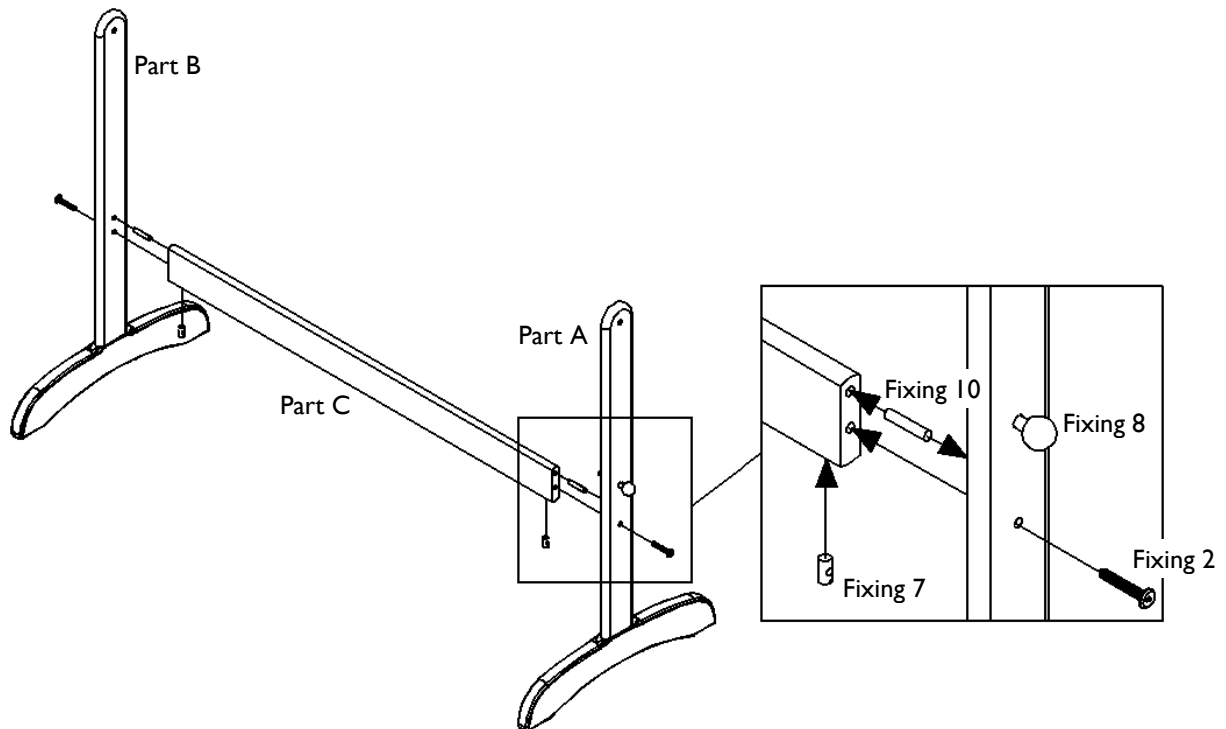
1 x Flat-headed screwdriver

1 x Allen key (supplied)



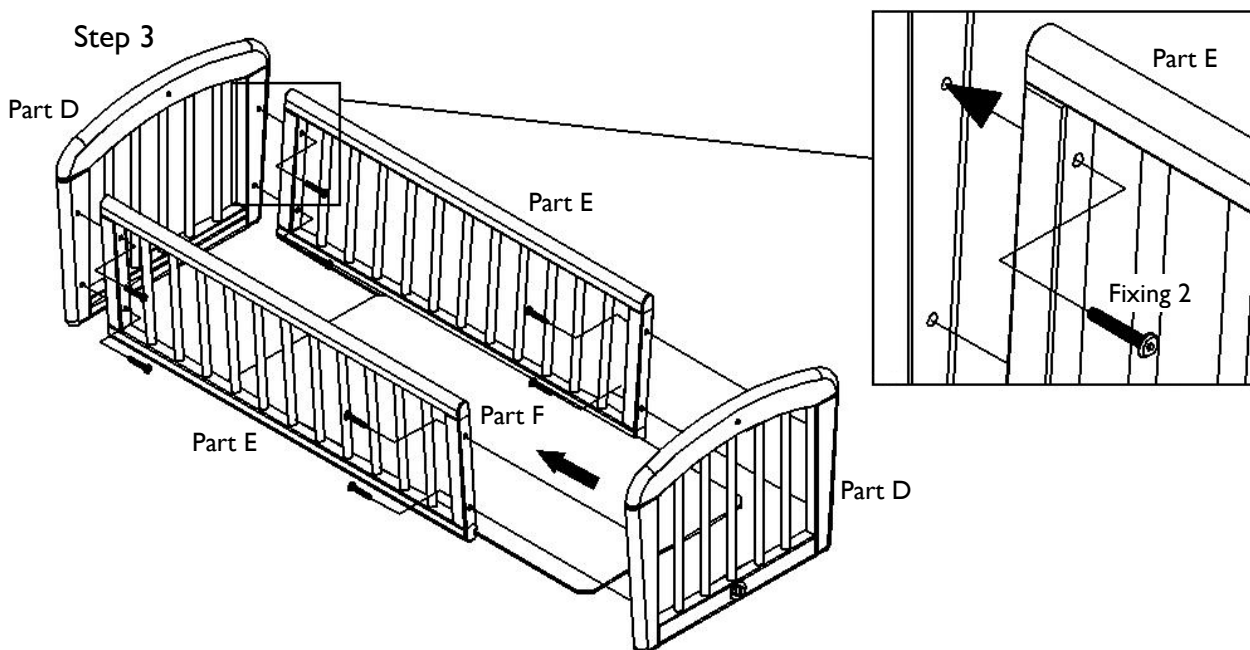
Insert the stop peg (fixing 8) through the outside of the stop peg crib foot (part A) and fix using the stop peg nut and bolt (fixing 9) as shown. Tighten all fixings fully.

Step 2



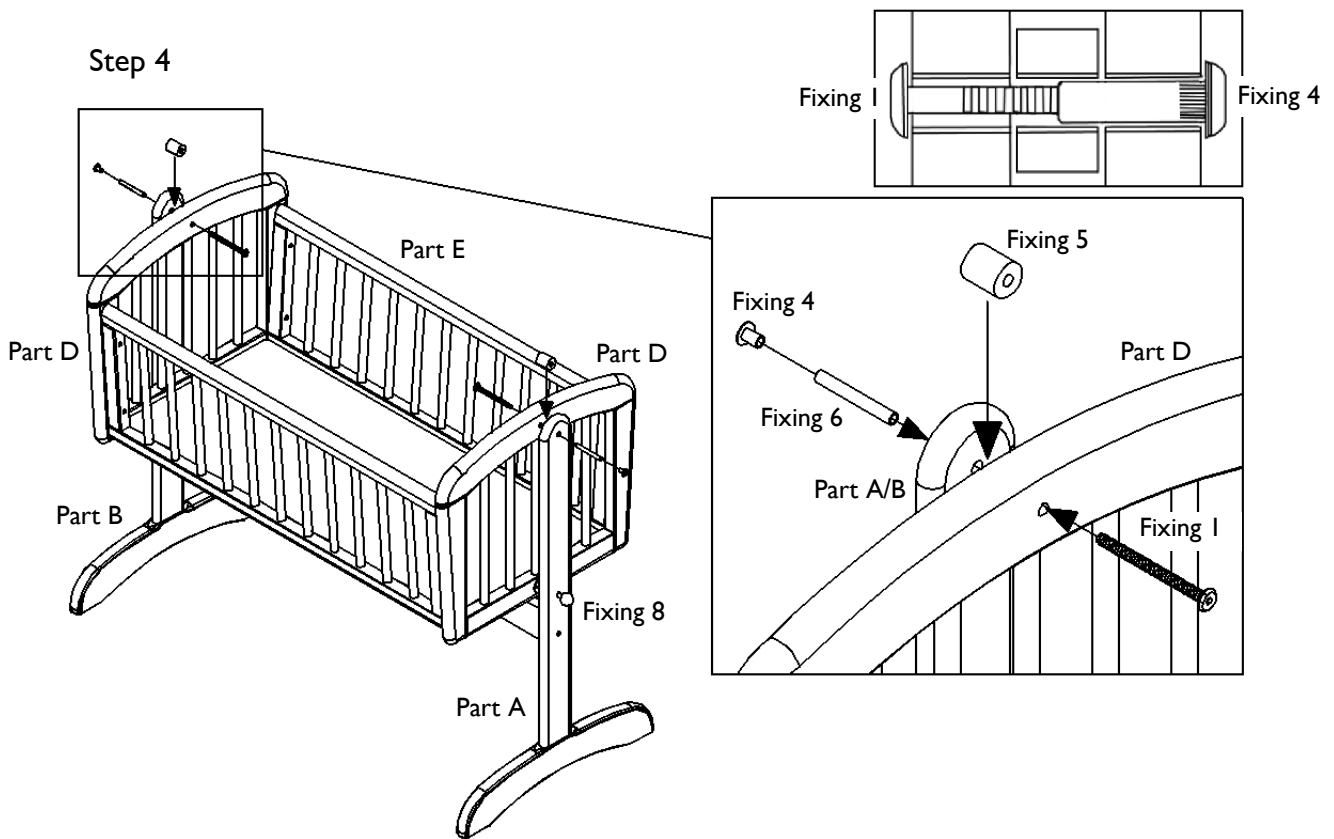
Insert one wooden dowel (fixing 10) into the top pre-drilled hole at each end of the crossbeam (part C). Fix the crib feet (part A and part B) to the crossbeam (part C) using one 50mm bolt (fixing 2) and one barrel nut (fixing 7) at each end as shown. If necessary, use a flat-headed screwdriver to ensure that the slots in the barrel nut (fixing 7) point towards the holes in the crib feet (part A and part B). Use the allen key (supplied) to engage the bolts into the barrel nuts. Tighten all fixings fully.

Step 3



Fix the side rails (part E) to one of the crib ends (part D) using two 45mm bolts (fixing 3) at either side as shown. Note: the groove in the side rails (part E) should be on the inside. Carefully slide the base (part F) through the grooves in the side rails (part E) and into the crib end (part D). Carefully fit the other crib end (part D) onto the base (part F) and secure to the side rails (part E) using two 45mm bolts (fixing 2) at either side. Tighten all fixings fully.

Step 4



Fix the assembled crib structure to the crib feet (part A and part B). Note: the crib structure should be placed so that the swing key plate (at one end) is aligned with the stop peg (fixing 8) in the crib foot (part A). From the inside of the crib, insert one 70mm bolt (fixing 1) through the crib end (part D), followed by a wooden spacer (fixing 5), the crib foot (part A/part B) and a metal sleeve (fixing 6). Secure using a sleeve nut (fixing 4) as shown. Repeat this process for the other end of the crib. Tighten all fixings fully.

To lock the swinging motion, insert the stop peg (fixing 8) into the key plate (located on the crib end) and rotate 90° to the left or right. To unlock the swinging motion, rotate and remove the stop peg (fixing 8) from the key plate. Note: the swinging function should always be locked when moving the crib and when your baby is asleep or left unsupervised.

Care and maintenance

Your furniture may be cleaned by wiping with a damp cloth and drying with a soft clean cloth.

Do not use abrasives, bleach, alcohol or ammonia-based household polishes.

Take care when handling or moving the furniture. Careless handling may cause damage.

Safety notes

When your child is able to sit, kneel or to pull itself up, the crib shall not be used anymore for this child.

Furniture can be dangerous if incorrectly installed. Assembly should be carried out by a competent person.

Keep children clear during assembly as pack contains small parts which may present a choking hazard.

The crib must always be placed on a flat, level surface.

Young children should not be allowed to play unsupervised in the vicinity of the crib.

Warning: When your child is left unsupervised in the crib, it should be locked in the fixed position.

Never use the body of the crib without its frame. Do not use the crib if any part is broken, torn or missing.

The thickness of the mattress chosen must not reduce the internal depth (from the top of the mattress surface to the top of the side) to less than 200mm.

The mattress should be no more than 30mm shorter or narrower than the internal length or width of the crib.

All assembly fixings should always be tightened properly. Care should be taken that no screws are loose because a child could trap parts of their body, or clothing (e.g. strings, necklaces, ribbons, dummies, etc) which could pose a risk of strangulation.

Be aware of the risks of open fires and other such sources of strong heat, such as electric bar fires, gas fires, etc in the vicinity of the crib.

Ensure the crib is positioned away from any cords on blinds or curtains to avoid risk of entanglement.

John Lewis Partnership
171 Victoria Street
London
SW1E 5NN

www.johnlewis.com