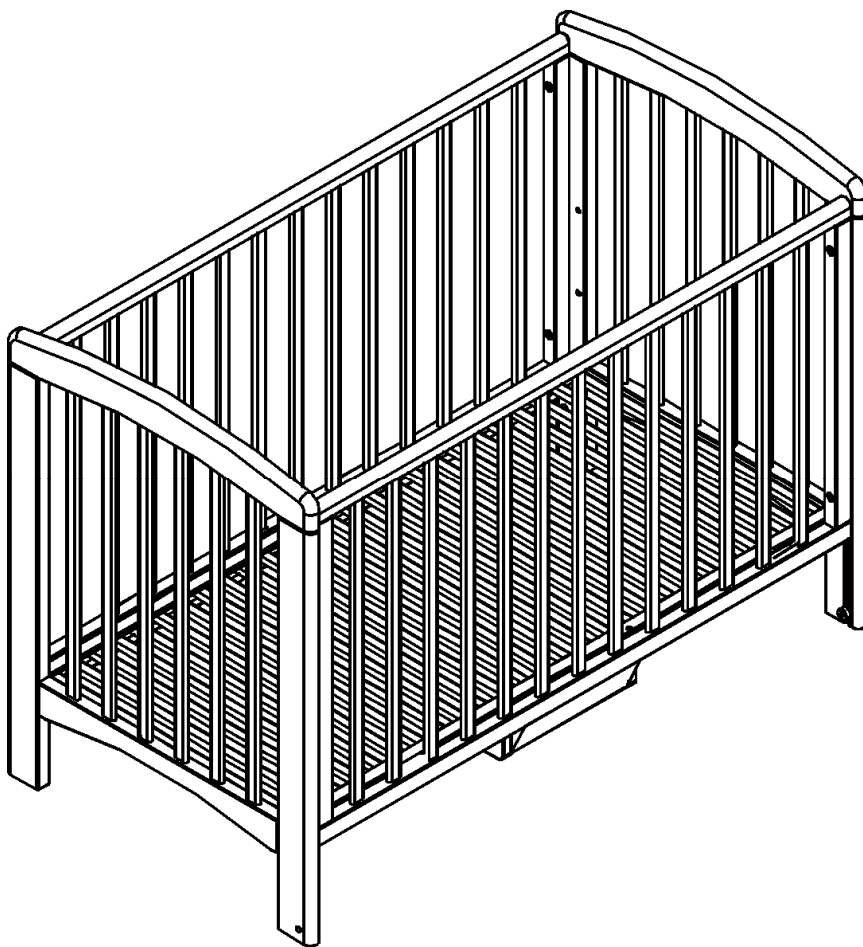


# Anna cot

## Instruction manual



**John Lewis**

**Important - Retain for future reference - please read carefully**

Thank you for purchasing this Anna cot. Please read the instructions and warnings carefully before use to ensure safe and satisfactory operation of this product.

Your child's safety is your responsibility. If you have a query with this product or require replacement parts, please contact your nearest John Lewis department store.

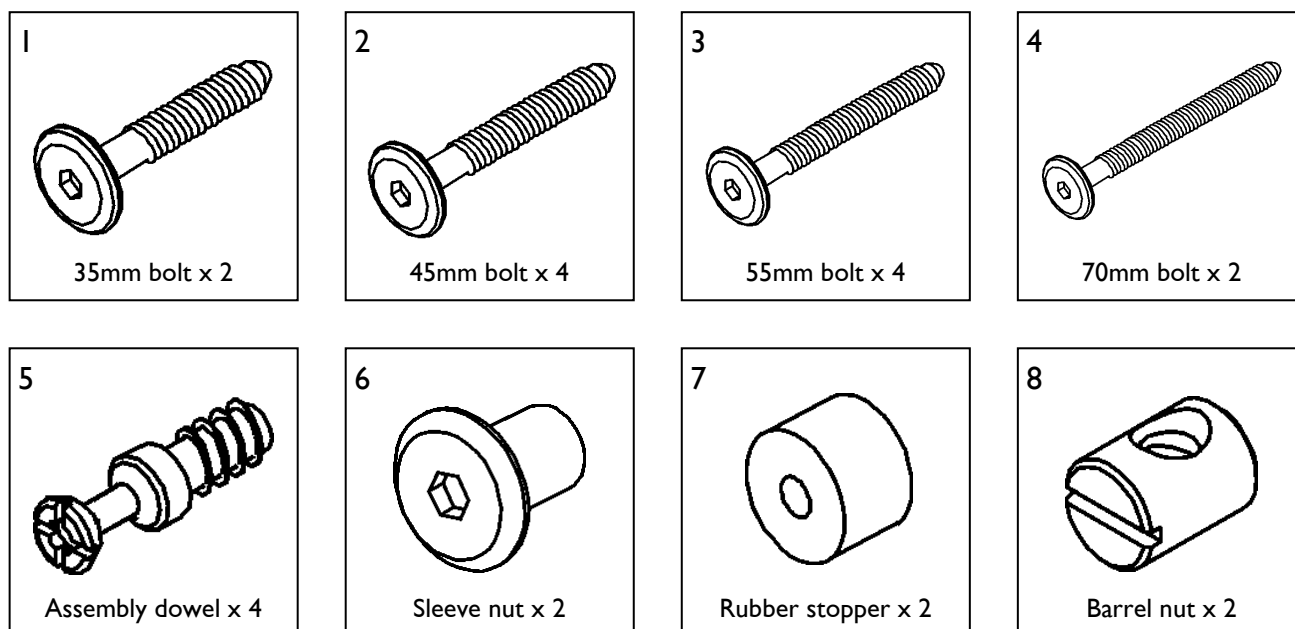
Lay out the parts on a soft level surface and compare to the part/fixings checklist on page 2. Do not discard any packaging until you are sure that you have all the parts.

Ensure that your child is kept clear during assembly due to small parts.

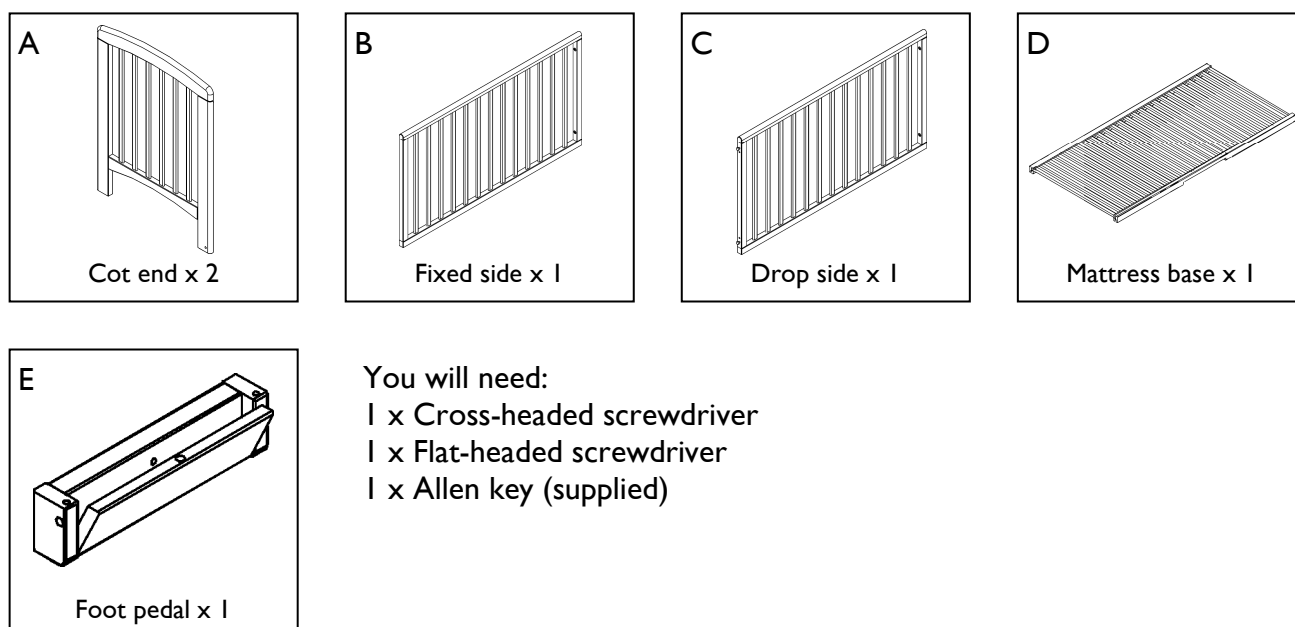
Recommended mattress: 60 x 120cm

This product complies with BS EN 716 - 1 & 2: 1996

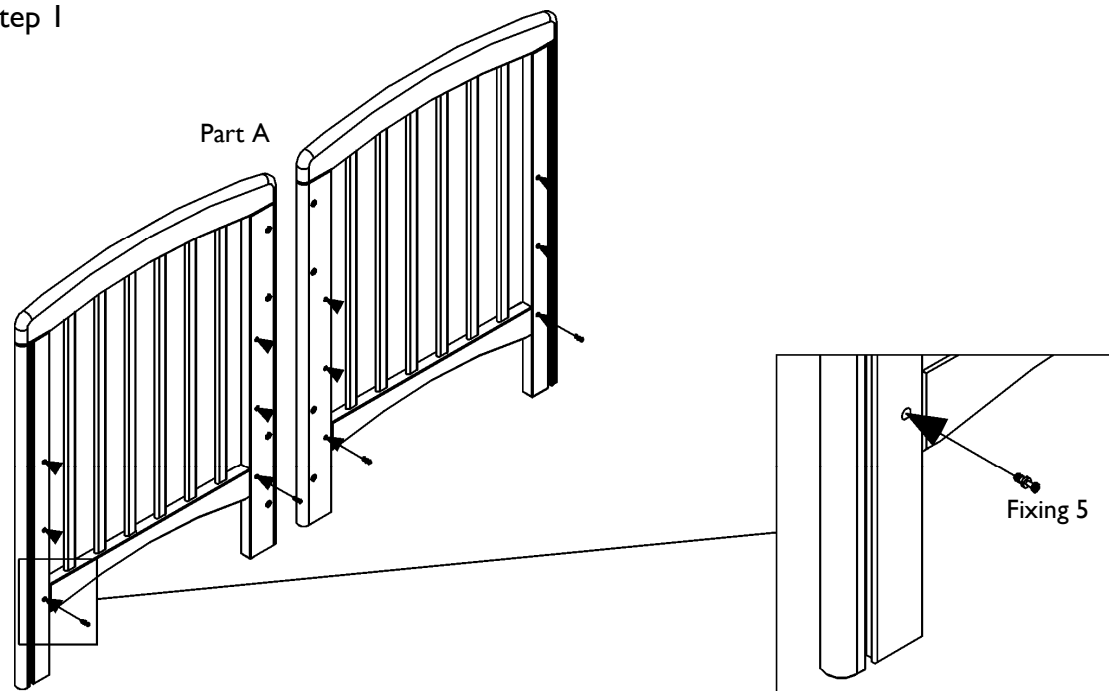
### Fixings



### Parts

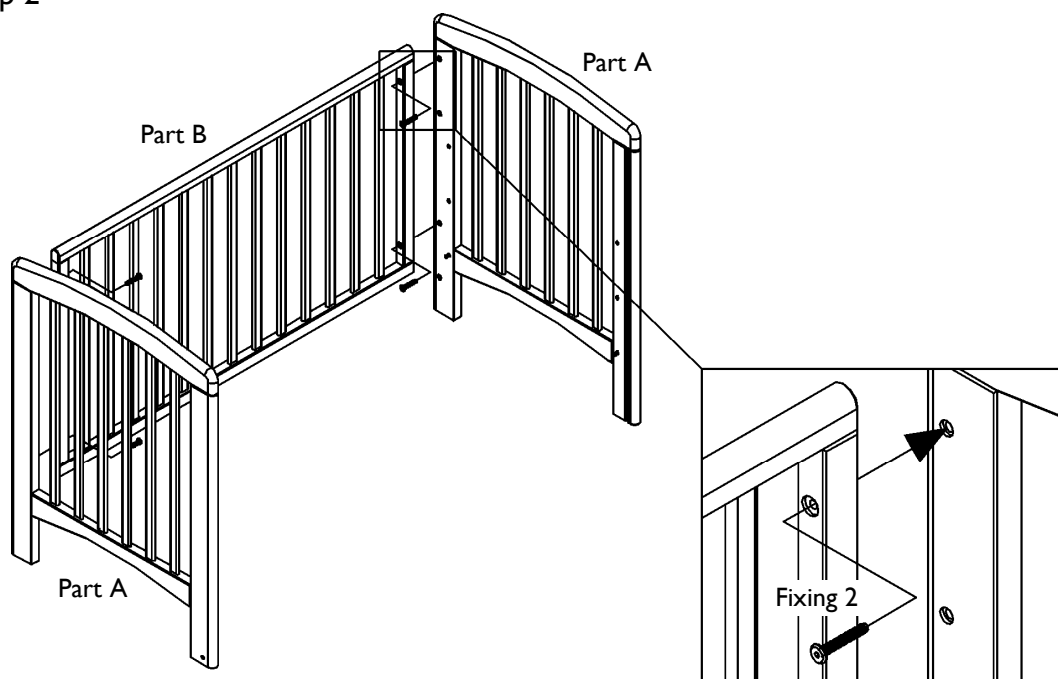


## Step 1



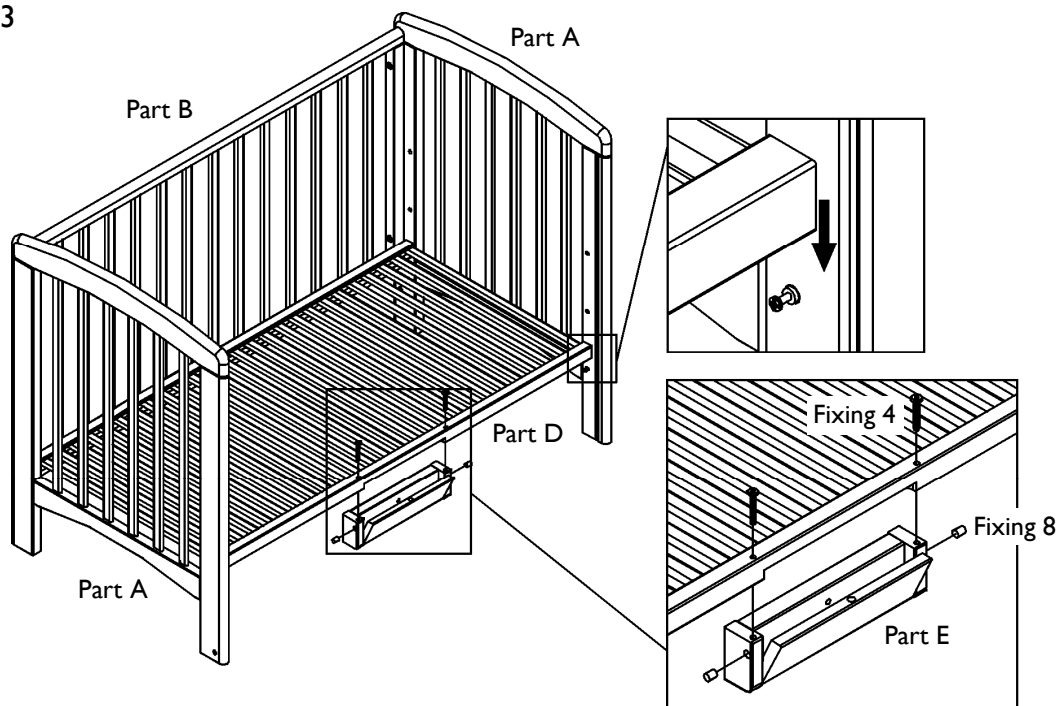
The cot has a choice of three mattress base positions. Screw four assembly dowels (fixing 5) into lower, middle or upper mattress base position on the inside of the cot ends (part A). Note the dropside is only functional when the mattress base is in its lowest position. The lowest base position is the safest.

## Step 2



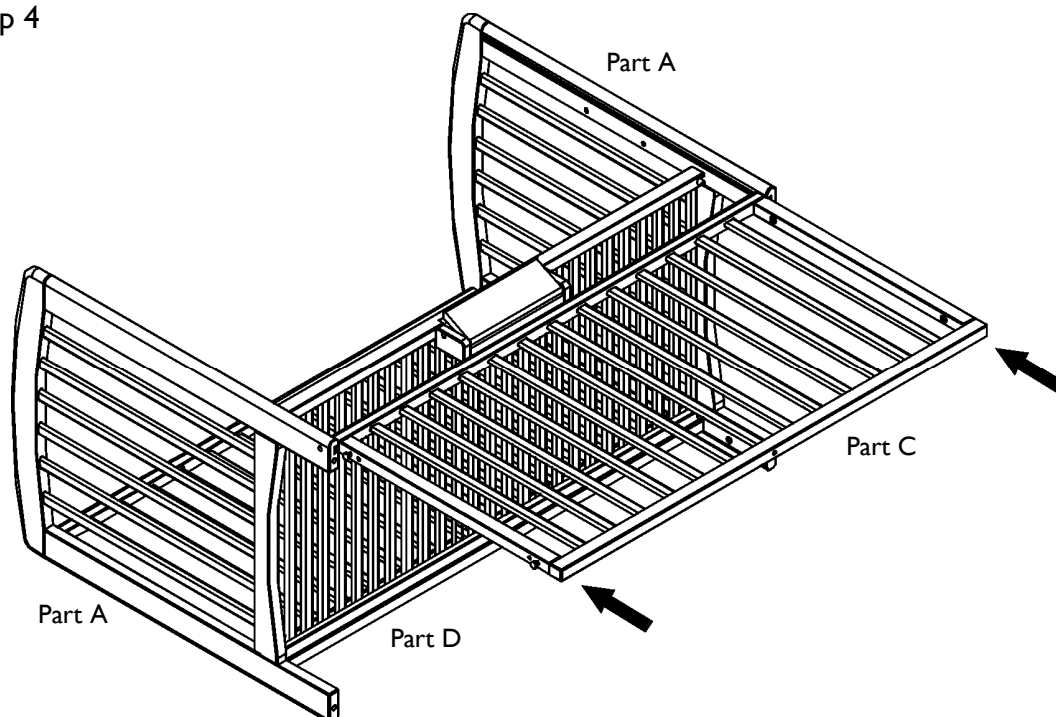
Assemble the fixed side (part B) to the cot ends (part A) using four 45mm bolts (fixing 2). Note the fixed side should be assembled to the cot end legs on the side without dropside grooves.

### Step 3



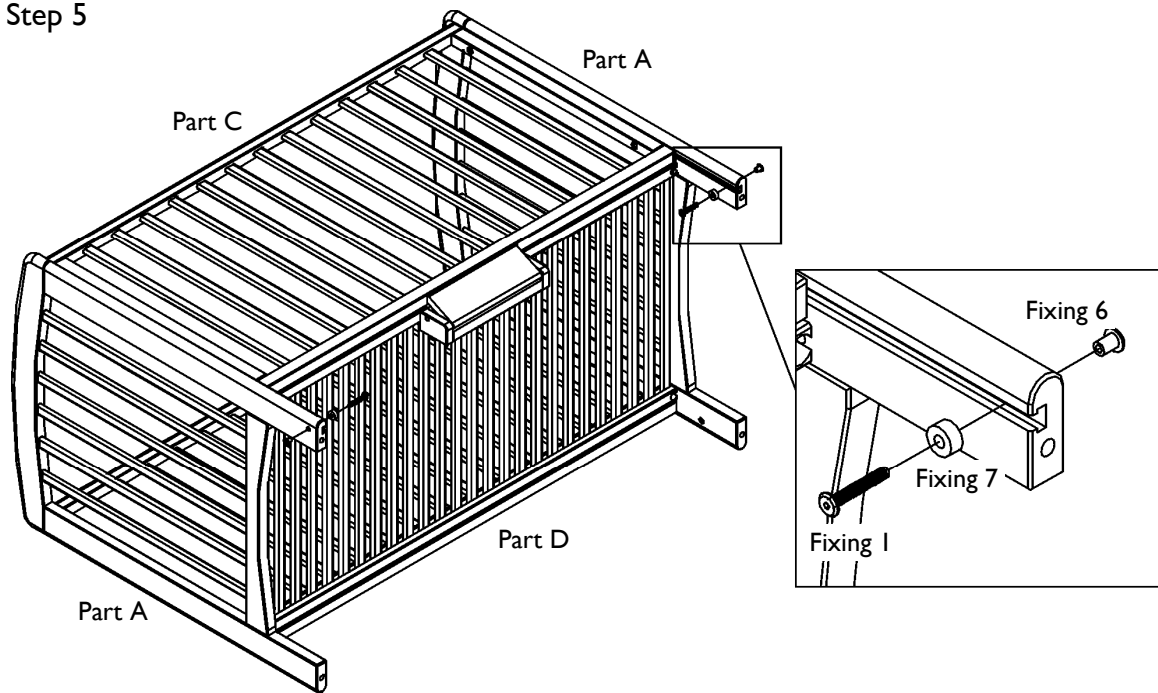
Fix the foot pedal (part E) to the mattress base (part D) using two 70mm bolts (fixing 4) and two barrel nuts (fixing 8) as shown. If necessary, use a flat-headed screwdriver to ensure that the slots in the barrel nuts (fixing 8) point towards the holes in the mattress base (part D). Use the allen key (supplied) to engage the bolts into the barrel nuts. Lower the mattress base (part D) onto the assembly dowels (fixing 5) at each corner of the cot ends (part A) and push down firmly.

### Step 4



If you have selected either the top or middle base position, the dropside (part C) may now be fixed using four 55mm bolts (fixing 3). Repeat step 2. Tighten all fixings fully. If you have selected the lowest base position, start by carefully laying the cot on its side (fixed side down) and slide the dropside (part C) into the channels on the cot ends (part A).

## Step 5



Fix one 35mm bolt (fixing 1), rubber stopper (fixing 7) and sleeve nut (fixing 6) at the bottom of the channel in each of the cot ends (part A) as shown. Tighten all fixings fully.

To lower the dropside, carefully lift and hold the dropside (part C) and apply pressure to the foot pedal (part E) to disengage. Lower the dropside until it makes contact with the rubber stoppers.

To raise the dropside, lift until the foot pedal (part E) engages.

## **Care and maintenance**

Your furniture may be cleaned by wiping with a damp cloth and drying with a soft clean cloth.

Do not use abrasives, bleach, alcohol or ammonia-based household polishes.

Take care when handling or moving the furniture. Careless handling may cause damage.

## **Safety notes**

Furniture can be dangerous if incorrectly installed. Assembly should be carried out by a competent person.

Keep children clear during assembly as pack contains small parts which may present a choking hazard.

The lowest base position is the safest, and should be used as soon as your baby is old enough to sit up.

If you leave your child unattended in the cot, always make sure that the drop side is in its highest position.

The thickness of the mattress chosen must not reduce the internal depth (from the top of the mattress surface to the top of the side) to less than 500mm with the base in its lowest position or 200mm with the base in the highest position. The inside face of the leg of the cot has a mark indicating this height.

The mattress should be no more than 30mm shorter or narrower than the internal length or width of the cot.

All assembly fixings should always be tightened properly. Care should be taken that no screws are loose because a child could trap parts of their body, or clothing (e.g. strings, necklaces, ribbons, dummies, etc) which could pose a risk of strangulation.

Avoid leaving anything in the cot which could provide a foothold or present a danger of suffocation or strangulation.

Be aware of the risks of open fires and other such sources of strong heat, such as electric bar fires, gas fires, etc in the vicinity of the cot.

Ensure the cot is positioned away from any cords on blinds or curtains to avoid risk of entanglement.

John Lewis Partnership  
171 Victoria Street  
London  
SW1E 5NN

[www.johnlewis.com](http://www.johnlewis.com)