

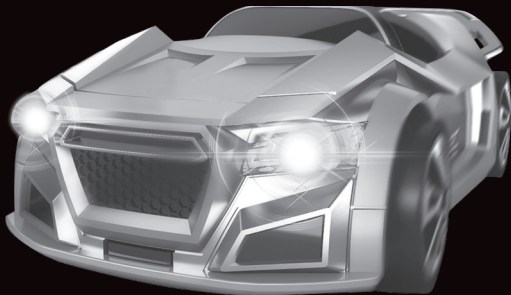
Ages 8+

RED5

motion

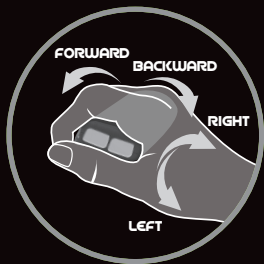
◀◀ **CONTROL CAR** ▶▶

Instruction Manual



HAND GESTURE DRIVING

Control the car with the
movement of your hand



1. Part List

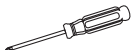
Please read this instruction manual carefully and keep for future reference.



Car x1



Remote Control x1



Screwdriver x1



USB Cable x1

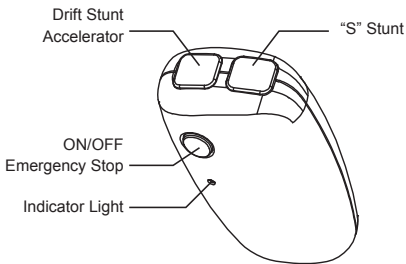
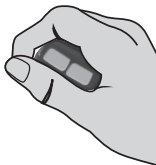


Instruction Manual X1

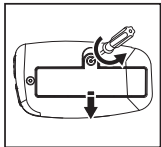
2. Remote Control

2.1 Introduction to the Remote Control

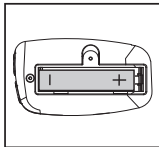
Please hold the remote control as illustrated below. Ensure the battery cover is facing upwards; towards the palm of your hand and the circular button is pointing down towards the floor.



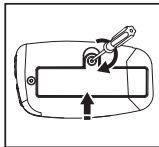
2.2 Battery Installation



Unscrew the battery cover on the remote control.



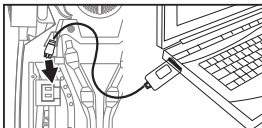
Insert 1x AAA battery into the battery compartment according to the correct polarities.



Replace the battery cover and screw to secure.

3. Charging the Battery

Connect the provided USB charging cable to the charging port located underneath the car. Then connect the USB to a computer's or adapter's USB port. While charging, the USB's indicator light will show as red. Once fully charged the USB's indicator light will turn off.



Battery Charging Precautions:

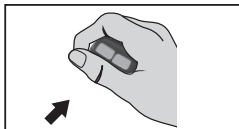
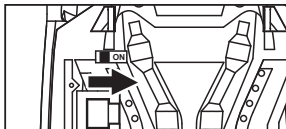
- Do not leave the car unattended while charging.
- The charging process should only be completed by an adult.
- Store the car in a cool, dry and well ventilated area.
- Do not expose the car or charger to direct heat, light or water sources.
- Do not dismantle the car.
- Ensure the car's battery has cooled sufficiently before re-charging or handling. Charging the battery while it is still hot/warm could cause swelling and damage to the battery. If swelling does occur, do not attempt to charge or use the car.
- Please remove the car from charge once the battery is fully charged. Overcharging the battery could cause battery swelling and damage.
- If the car begins to smell, change colour or become deformed/swollen, discontinue use immediately and do not attempt to recharge the battery.
- If you do not intend to use the car for an extended period of time, please charge the battery to 50% of its capacity before storing.
- Only use the provided charging cable.

4. Pairing

Turn the car's power switch ON. Once turned on the car's headlights (white) and rear headlights (red) will begin to flash.

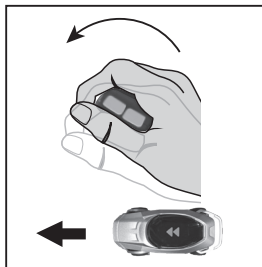
Turn ON the remote control by pressing and holding down the circular button until the red indicator light turns on and begins to flash.

The flashing indicator lights on both the remote control and car indicate that they are in pairing mode. Once both have been turned on, the remote control and car will automatically begin to pair. Once paired successfully, all indicator lights will stop flashing and hold a solid light.

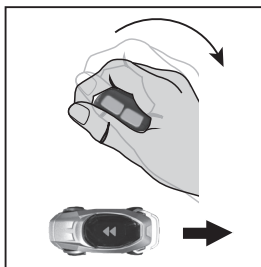


5. Operation Instructions

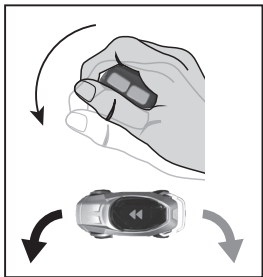
Note: The remote control is quite sensitive, please use gentle gestures and motions when using the remote control. This will give you the best performance and control over the car.



Tilt the remote forwards and the car will move forwards.

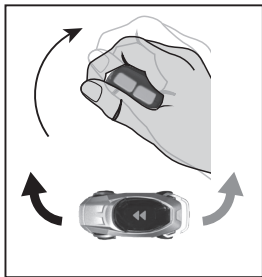


Tilt the remote backwards and the car will move backwards (reverse).



While tilting the remote forwards, tilt the remote to the left and the car will turn left.

While tilting the remote backwards, tilt the remote to the left and the car will reverse and turn left.

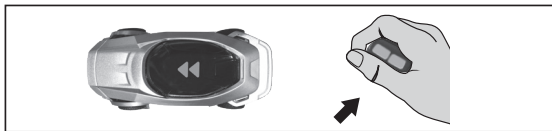


While tilting the remote forwards, tilt the remote to the right and the car will turn right.

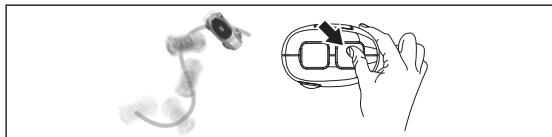
While tilting the remote backwards, tilt the remote to the right and the car will reverse and turn right.

Press the circular button once with your thumb and the car will emergency stop.

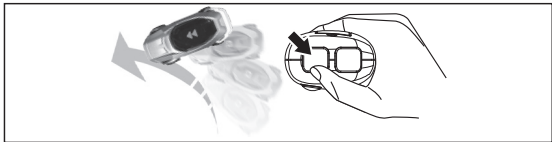
Note: Only press the button once to stop the car. Do not hold the button, otherwise this will turn off the remote control.



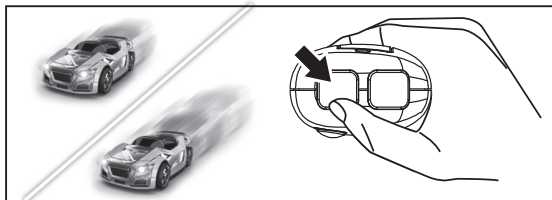
Press the stunt button once, and the car will perform an 'S' stunt.



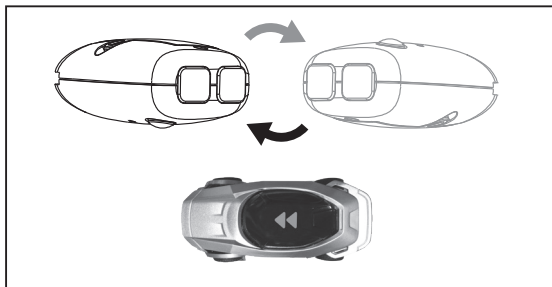
Tilt the remote gently forwards to begin driving the car forwards. Then, press and hold the drift stunt button while tilting the car either left or right. The car will then perform a drift stunt left or right accordingly.



Press and hold the accelerator button while tilting the remote forwards. The car will then accelerate forwards.

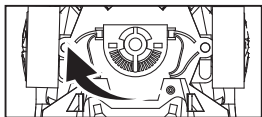


Twist the remote over 180°, so that the circular button is now facing the palm of your hand. This action will make the car stop and act as a brake.

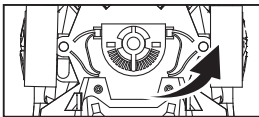


6. Fine Tuning

If you find the car does not drive in a straight line, use the trimmer dial located underneath the car to correct and stabilize the direction of the car.



If the direction of the car diverts to the right, turn the trimmer dial to the right until the car drives straight.



If the direction of the car diverts to the left, turn the trimmer dial to the left until the car drives straight.

7. Trouble Shooting

If you find the car does not or has a slow response to your gestures please check that the car has been fully charged. Please also check that battery in the remote control has not been exhausted.

8. Battery Advice

- Requires 1 x 'AAA' battery. Not Included.
- Batteries should only be replaced by an adult.
- Do not mix old and new batteries.
- Do not mix alkaline, standard (carbon-zinc) or rechargeable (nickel-cadmium) batteries.
- Do not re-charge non-rechargeable batteries.
- Rechargeable batteries are only to be charged under adult supervision.
- Rechargeable batteries are to be removed from the product before being charged.
- Ensure batteries are inserted with the correct polarity.
- Exhausted batteries should always be removed.
- The terminals should not be short circuited.
- Use a screwdriver to remove the screw from the battery cover. Replace battery cover and screw before use.

Hereby, Gift Universe Management Ltd, declares this product is in compliance with the essential requirements and other relevant provisions of Directive 2014/53/EU. A copy of the original Declaration of Conformity can be obtained at the following address: Gift Universe, The Atrium, Curtis Road, Dorking Surrey RH4 1XA.

This product bears the selective sorting symbol for waste electrical and electronic equipment (WEEE). This means that this product must be handled pursuant to European Directive 2012/19/EU in order to be recycled or dismantled to minimize its impact on the environment. For further information, please contact your local or regional authorities. Electronic products not included in the selective sorting process are potentially dangerous for the environment and human health due to the presence of hazardous substances.

RED5

WWW.RED5.COM

Manufactured by **RED5 RH4 1XA**

Please retain the important information
on this packaging for future reference.

71534

MADE IN CHINA

Supplier item reference: FX-101

02/18

