

Giles 1lt Flush

Installation Instructions

Thank you for purchasing this light fitting. Please read the instructions carefully before use to ensure safe and satisfactory operation of this product.

This product is rated IP44 and must not be used without the shade attached

Please keep these instructions for future reference.

Warnings!

This is a Class I product and must be earthed.

Please read these instructions carefully before commencing any work. It is recommended that this fitting is installed by a qualified electrician.

Install in accordance with the IEE Wiring regulations and the Building Regulations.

To prevent electrocution switch off at mains supply before installing or maintaining this fitting. Ensure other persons cannot restore the electrical supply without your knowledge. If you are in any doubt, please consult a qualified electrician.

This light fitting should be connected to a 5 amp fused circuit.

If replacing an existing fitting, make a note of the connections.

Always use the correct type and wattage bulb. Never exceed the wattage stated.

When changing a bulb, always switch off at the mains and allow the old bulb to cool down before handling. Dispose of used bulbs carefully.

This product is suitable for indoor use only, on normal flammable surfaces, as indicated by this symbol.



Fixing Instructions

Make sure you have the following items which are required to install this light fitting:

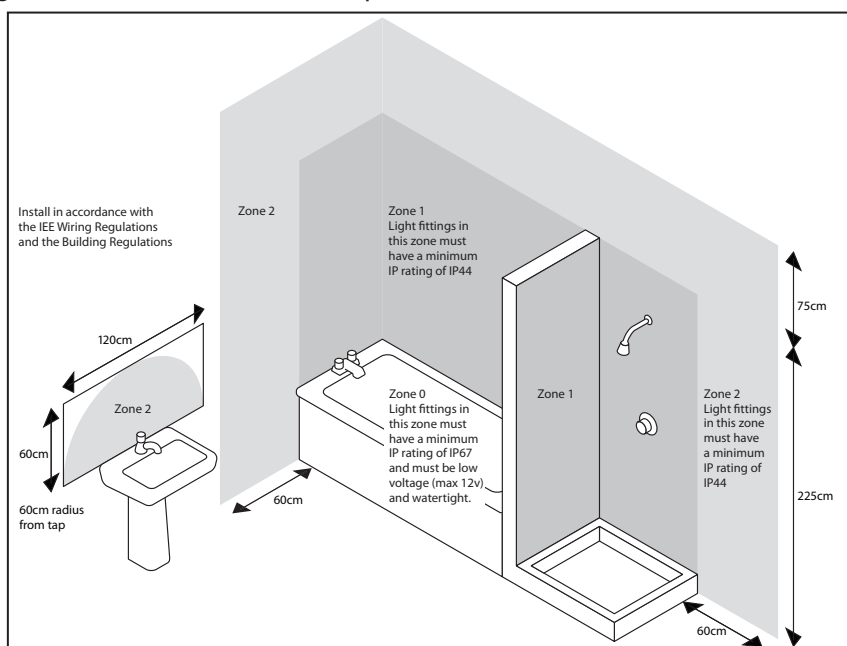
Small electrical screwdriver, cross head screwdriver & insulation tape.

The installation of this fitting will be much easier with the help of an assistant.

Installation:

This product has special protection against the ingress of moisture and is IP44 rated.

This product is suitable for use in Zone 1, Zone 2, and outside Zones of a bathroom. See diagram. **If installing in a bathroom a 30mA RCD must be used - in accordance with IEE Wiring Regulations and the Building Regulations.**



Step 1

Existing ceiling roses must be completely removed before installation of a new product. Before removing the existing fitting or ceiling rose, carefully note the position of each set of wires. Where a ring/loop circuit exists there will be a fourth set of wires (usually red) that are not connected to the L, N, or E. of the fitting. This circuit must be kept together in the terminal block supplied in the screw pack, and insulated from the fitting and the other wires.

The ring/loop will remain live unless isolated at the mains or circuit breaker regardless of the position of the wall switch.

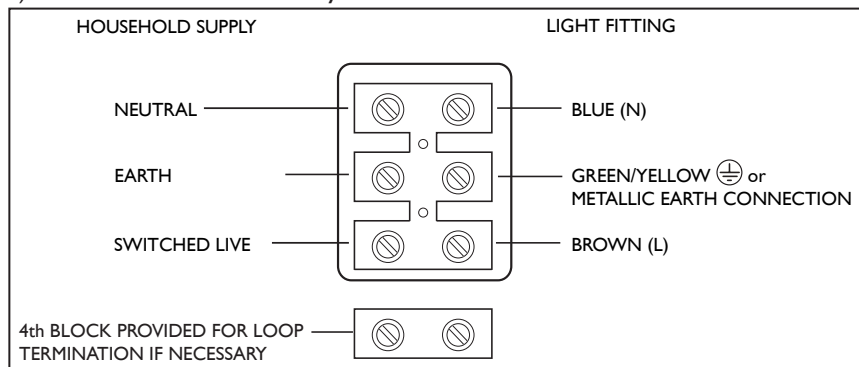
Wiring - see diagram overleaf

- 1) Remove the fixing bracket from the product and attach to the ceiling using the screws supplied. Take care not to trap or damage any concealed wiring.
- 2) Carefully open the lid of the terminal block case.
- 3) Connect household Live wire to terminal on terminal block marked 'L'.
- 4) Connect household Neutral wire to terminal on terminal block marked 'N'.
- 5) Connect household Earth wire to Earth wire on fitting, or terminal marked.

Wiring - continued

6) Check that you have correctly identified the house wires, the connections are tight and that no loose strands have been left out of the connection block.

7) Ensure lid is closed securely.



A fourth connection block is provided should you need it to make a loop connection. You must then wrap the connection block in tape covering at least 2cm of the wiring on each side

This product has “L” shaped fixing slots to allow easy fixing to the ceiling strap. Locate the “L” slots around the small screws on the ceiling strap. Rotate the ceiling cover to attach the product to the strap. Tighten the screws to secure. Take care not to trap any wiring.

Fitting/Replacing the bulb

Bulb type - 40w Max ES GLS bulb or 9w energy saver.

When changing a bulb, always switch off at the mains and allow the bulb to cool before handling. Dispose of used bulbs carefully. Do not exceed the wattage stated or use a different shape bulb from that indicated on the fitting.

Some Energy saver bulbs are not suitable for use with a dimmer switch.

Attaching the glass shade

To attach the glass shade (B) to lamp body (A) refer to diagrams 1 & 2 opposite.

Holding the glass shade push one spring clip (F) into the hole in the shade. Slide the edge of the shade hole to the centre of the lamp as far as is possible towards the lampholder.

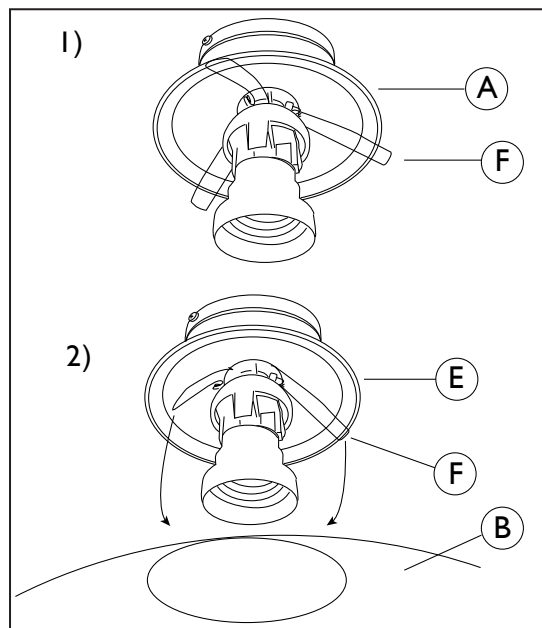
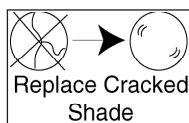
With one hand supporting the glass, or with the help of an assistant, compress the other two spring clips and feed them into the shade. Ensure the lamp body cup (A) is centred over the hole in the shade and the seal is flat against the outside of the glass.

To remove the shade reverse the process taking care not to let the spring clips snap back on hands causing injury.

Glass Shade

The glass shade must be replaced if it becomes cracked or damaged.

Do not use product without glass shade attached.



Replace fuse or circuit breaker and switch on. Your light is now ready for use.

Care and cleaning

Finish - We recommend cleaning with a soft dry cloth. Do not use abrasive materials as these will damage the finish.

Glass parts - Remove and wash in warm water or just use a damp cloth. Do not use abrasive materials as these will damage the finish.

Safety Information

For your safety, always switch off the supply before changing the lightbulb, cleaning or removing the shade.

We have taken great care to ensure that this product reaches you in perfect condition. However, should any parts be damaged or missing please contact our Product Helpline on (01202) 690945. We will despatch to you, within 7 working days, your missing/damaged part. When phoning please ensure you have the following information available: Name and Address, Daytime Telephone Number, Store and Date of Purchase, Product Reference (inside ceiling cover or on box label), Description of Missing/Damaged Part. This does not affect your statutory rights.