

# Bok It Wall Light

## Installation Instructions

Thank you for purchasing this Bok Wall Light. Please read the instructions carefully before use to ensure safe and satisfactory operation of this product.

Please keep these instructions for future reference

### Warnings!

**This is a Class I product and must be earthed.**

Please read these instructions carefully before commencing any work. It is recommended that this fitting is installed by a qualified electrician.

Install in accordance with the IEE Wiring regulations and the Building Regulations.

To prevent electrocution switch off at mains supply before installing or maintaining this fitting. Ensure other persons cannot restore the electrical supply without your knowledge. If you are in any doubt, please consult a qualified electrician.

This light fitting should be connected to a 5 amp fused circuit.

If replacing an existing fitting, make a note of the connections.

Always use the correct type and wattage bulb. Never exceed the wattage stated.

When changing a bulb, always switch off at the mains and allow the old bulb to cool down before handling.

Dispose of used bulbs carefully.

This product is suitable for installation on surfaces with normal flammability e.g. wood, plasterboard, masonry. It is not suitable for use on highly flammable surfaces.

### **Please Note:**

This product is suitable for use with a dimmer switch.

### **Fixing Instructions**

Make sure you have the following items which are required to install this light fitting:

Small electrical screwdriver, cross head screwdriver & insulation tape.

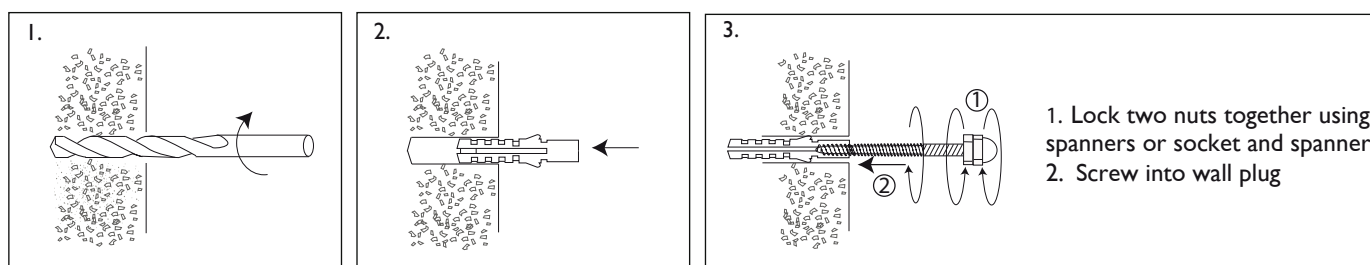
The installation of this fitting will be much easier with the help of an assistant.

### **Step 1**

Before removing the existing fitting, **carefully note the position of each set of wires**. Where a ring/loop circuit exists there will be a fourth set of wires (usually red) that are not connected to the L, N, or E. of the fitting. This circuit must be kept together in the 4th terminal of the connection block, and insulated from the fitting and the other wires. **The ring/loop will remain live unless isolated at the mains or circuit breaker regardless of the position of the wall switch.**

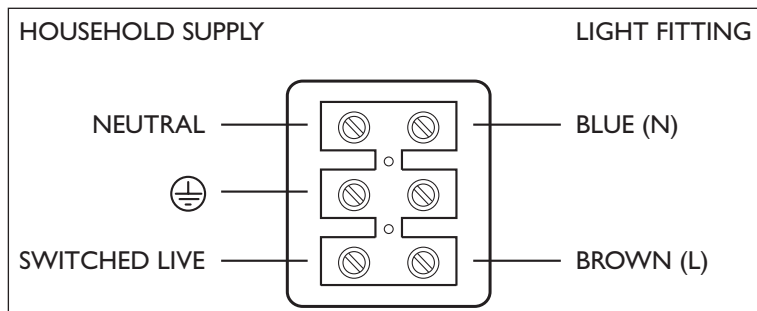
### **Step 2**

Check hole spacings on rear of product (approx 215mm). Drill out holes in wall (see diagram 1), ensuring supply wiring is in the centre of fixing hole spacing then fit wall plugs (see diagram 2). The wall plugs supplied are only suitable for masonry. Obtain suitable fixings for plasterboard. Screw in special fixing screws as detailed below (see diagram 3). Take care not to damage concealed wiring and pipes.



### Step 3

Having identified the household wiring from your existing light fitting, connect to the connection block inside the product in the following way:



#### Check that.....

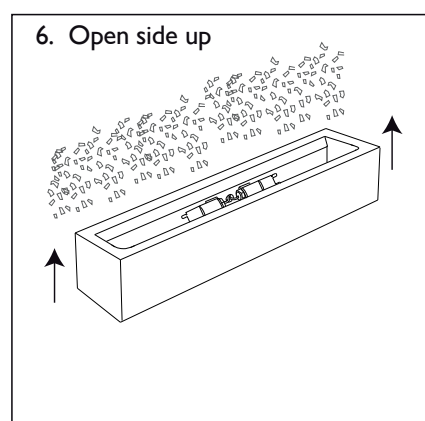
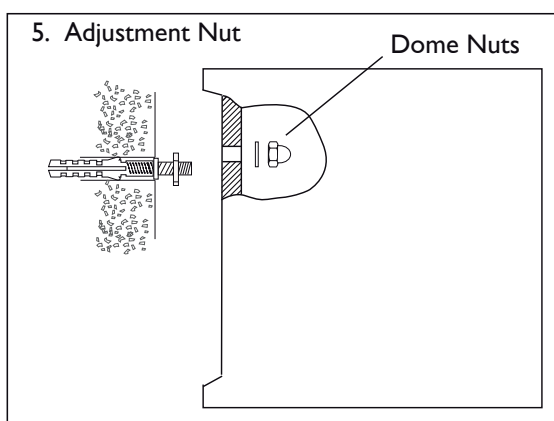
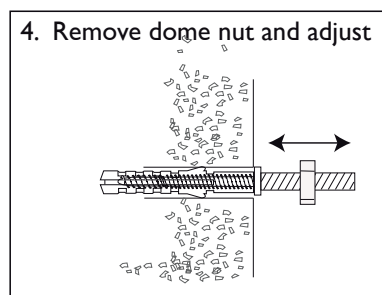
You have correctly identified the house wires. The connections are tight.

No loose strands have been left out of the connection block.

Cover is securely refitted.

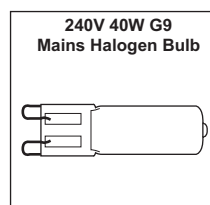
### Step 4

Attach the product to the fixing screws. Use the adjustment nut to ensure the product sits flush against the wall with the terminal box in the recess (see diagram 4). Add rubber washers and secure with dome nuts (see diagram 5) - Do not over tighten. Ensure the wall back is fitted in the correct orientation (see diagram 6).



### Fitting/Replacing the bulbs - 40w G9 halogen

During use the bulb and light fitting get very hot. Switch off the product and allow the bulb to cool before changing the bulb. Use a soft cloth to handle G9 bulbs, avoid directly touching the bulbs as this will shorten their life. Always use replacement bulbs of the same type and wattage, if you use bulbs with a higher wattage the lamp holder could be damaged.



### Step 5

Replace fuse or circuit breaker and switch on. Your light is now ready for use.

### Care and cleaning

Finish - We recommend cleaning with a soft dry cloth. Do not use abrasive materials as these will damage the finish. Glass parts - Remove and wash in warm water or just use a damp cloth. Do not use abrasive materials as these will damage the finish.

### Safety Information

For your safety, always switch off the supply before changing lightbulb or cleaning.

We have taken great care to ensure that this product reaches you in perfect condition. However, should any parts be damaged or missing please contact our Product Helpline on (01202) 690945. We will despatch to you, within 7 working days, your missing/damaged part. When phoning please ensure you have the following information available: Name and Address, Daytime Telephone Number, Store and Date of Purchase, Product Reference (inside ceiling cover or on box label), Description of Missing/Damaged Part. This does not affect your statutory rights.