

# Angelcare®

FOR YOUR PEACE OF MIND

## INSTRUCTION MANUAL



with  
Touch-Screen



**THE ULTIMATE DIGITAL BABY MONITOR**

**Video and Sound**  
**Model AC1120**



**TABLE OF CONTENTS**

WARNINGS .....4

IMPORTANT SAFETY INSTRUCTIONS .....4

TIPS TO IMPROVE RECEPTION .....6

FCC WARNINGS .....6

FEATURES & COMPONENTS .....7

ANGELCARE® MONITOR INSTALLATION .....8

TESTING YOUR ANGELCARE® MONITOR .....9

MAIN MENU SETTINGS .....10

SUB-MENU SETTINGS .....12

ADDITIONAL FUNCTIONS .....14

PROBLEM SOLVING .....16

LIMITED WARRANTY .....17

FACTORY SETTINGS AND TECHNICAL SPECIFICATIONS .....17

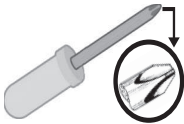
- PLEASE READ THESE INSTRUCTIONS AND WARNINGS CAREFULLY PRIOR TO USING THIS PRODUCT.
- THIS PRODUCT IS NOT A TOY KEEP OUT OF CHILD’S REACH AT ALL TIMES
- FOR USE WITH CHILDREN FROM BIRTH AND UP.



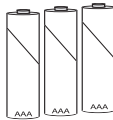
**WARNING:**

- Adult assembly required.
- Keep small parts away from children when assembling.

- TOOLS REQUIRED (NOT INCLUDED):



Miniature Phillips screwdriver.



3 AAA regular batteries  
for Nursery Unit battery  
back-up.

We, at Angelcare®, stand behind all of our products.  
If you are not completely satisfied or have any questions, please contact your Distributor.

## WARNINGS



### BATTERY WARNING

- **USE ONLY NIMH AAA RECHARGEABLE BATTERIES. WARRANTY VOID IF ANY OTHER TYPE OF BATTERY IS USED.**
- **The rechargeable batteries included with this monitor should be replaced every 2 to 3 months.**
- **Remove the rechargeable batteries when the product is stored for long period of non-use.**
- **Dispose of exhausted batteries properly.**



### WARNING

**THIS PRODUCT CANNOT REPLACE RESPONSIBLE ADULT SUPERVISION.**

- **Failure to follow these warnings and the assembly instructions could result in serious injury or death.**
- This product was designed to aid in the monitoring of your child. When using the monitor, you must still provide the supervision necessary for the continued safety of your child. Always be sure that both the transmitter and receiver are working properly and are within range of each other.
- **This product is NOT a substitute for direct supervision of your baby.** Check your baby's activities at regular intervals. Monitoring of premature babies, or those considered to be at risk, should always be carried out under the supervision of a health professional.

## IMPORTANT SAFETY INSTRUCTIONS

### 1. INSTALLATION AND POSITION

- Do not use the Nursery Unit or the Parents Unit if they have been dropped or damaged.
- Always place both the Nursery Unit and Parents Unit on a flat surface in an upright position and allow for proper ventilation.
- **DO NOT** place the Nursery Unit or its cord within your child's reach. Do not put the Nursery Unit inside a crib or playpen.

### 2. VENTILATION

- **ALWAYS** place both units on a flat surface in the upright position so that air can flow freely around them. Do not cover the Nursery Unit or Parents Unit with any object such as a blanket. Do not place it in a drawer or in any location which would muffle the sound or interfere with the normal flow of air.

### 3. CORD PROTECTION

- **STRANGULATION HAZARD. Children have been strangled by cords. Keep the adapter cords out of the reach of children. Do not use with extension cords.**
- Do not use the Nursery Unit if the adapter cords or plugs have been damaged.
- Avoid damage to the adapter cords. Route cords so that they are not walked on or pinched by items placed upon or against them.

## IMPORTANT SAFETY INSTRUCTIONS



### 4. WATER, MOISTURE AND HEAT DAMAGE

- DO NOT use the Angelcare® Monitor if either of the units has been exposed to liquids.
- DO NOT immerse any part of the Nursery Unit, Parents Unit, charger, adapters in water or any other liquid. Clean only with a dry cloth.
- DO NOT place unit near water and moisture. Do not use the Nursery Unit outdoors. Do not use the Nursery Unit near wet areas, such as a bathtub, shower, wash basin, sink, laundry tub, swimming pool, wet basement, etc.
- Keep Nursery Unit away from heat sources, such as fireplaces, radiators, stoves or other appliances. Heat can damage the case or electrical parts.

### 5. AC POWER SOURCE

- Use only the AC adapters supplied with the Angelcare® Monitor. DO NOT use these adapters with any other equipment.
- When unplugging the AC adapter from the Nursery Unit, be sure it is switched to the off position. If it isn't, the unit will revert to battery mode, if batteries are installed.

### 6. BATTERY

- Charge the batteries for 10 hours prior to first use.
- Use ONLY AAA rechargeable batteries and/or the AC adapters provided for the Parents Unit.

### 7. OBJECT IN THE UNITS

- Care should be taken so that objects do not fall onto units.
- **DO NOT OPEN the Nursery Unit, Parents Unit, Parents Unit base or adapters. No user-serviceable parts inside. Risk of electrical shock, fire or death.**

### 8. CLEANING AND NON-USE PERIODS

- Disconnect all units before cleaning. DO NOT immerse in water. Use a dry cloth to keep monitor free from dust. DO NOT spray with cleaning products or solvents.
- When not using the monitor for any long period, remove the batteries from both units and disconnect the AC adapters from electrical outlet.

## TIPS FOR IMPROVING RECEPTION

- **There is an increase of different products on the market manufactured with wireless 2.4 GHz technology, which may cause interferences with your baby monitor. Install your Angelcare® baby monitor away from microwaves, cordless phones, Wi-Fi technology, computers and routers (and/or any other similar electronic devices), as these devices may disrupt and/or diminish the transmission of the monitor's signals, alarm signals and range.**
- The antenna used for this transmitter must be installed to provide a separation distance of at least 20 cm (7.9") from all persons and must not be located or operating in conjunction with any other antenna or transmitter.
- This monitor uses public airwaves to transmit signals. The Parents Unit may pick up signals or interference from other nursery monitors in your area. Your monitor may even be picked up by other households. To protect your privacy, make sure both units are turned off when not in use.

## FCC WARNING

**Modifications not authorized by the manufacturer may void users authority to operate this device.**

This equipment has been tested and found to comply with the limits for a Class B digital device, pursuant to Part 15 of the FCC Rules. These limits are designed to provide reasonable protection against harmful interference in a residential installation. This equipment generates, uses and can radiate radio frequency energy and, if not installed and used in accordance with the instructions, may cause harmful interference to radio communications. However, there is no guarantee that interference will not occur in a particular installation.

If this equipment does cause harmful interference to radio or television reception, which can be determined by turning the equipment off and on, the user is encouraged to try to correct the interference by one or more of the following measures:

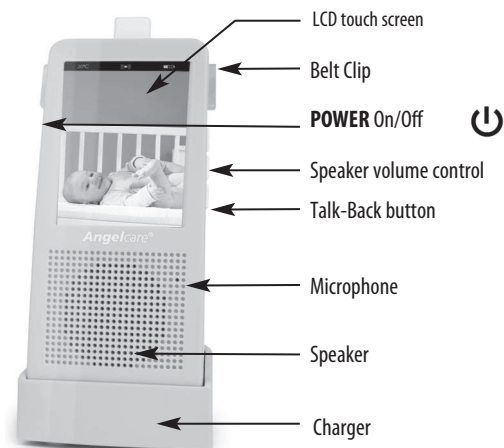
- Reorient or relocate the receiving antenna.
- Increase the separation between the equipment and receiver.
- Connect the equipment into an outlet on a circuit different from that to which the receiver is connected.
- Consult the dealer or an experienced technician for help.

**This device complies with part 15 of the FCC Rules.**

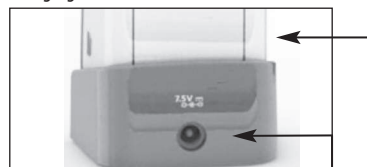
Operation is subject to the following two conditions:

- (1) This device may not cause harmful interference;
- (2) This device must accept any interference received, including interference that may cause undesired operation.

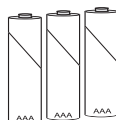
## FEATURES & COMPONENTS - PARENTS UNIT



Charging cradle back view

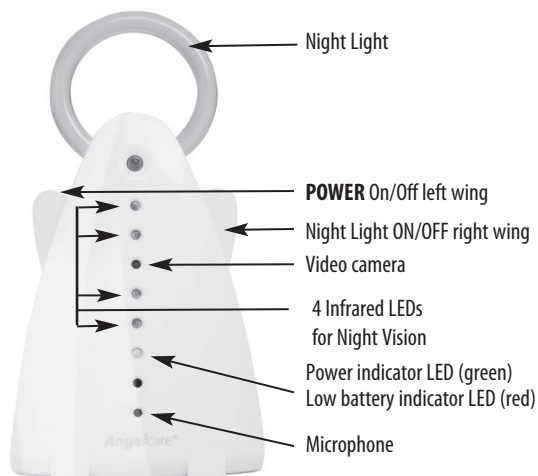


Charging cradle  
AC Adapter cable entry  
(included)

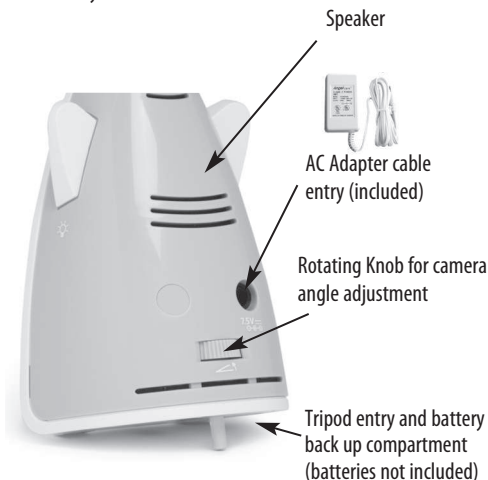


Battery compartment  
(only insert 3 'included' AAA  
rechargeable batteries- included)

## FEATURES & COMPONENTS - NURSERY UNIT



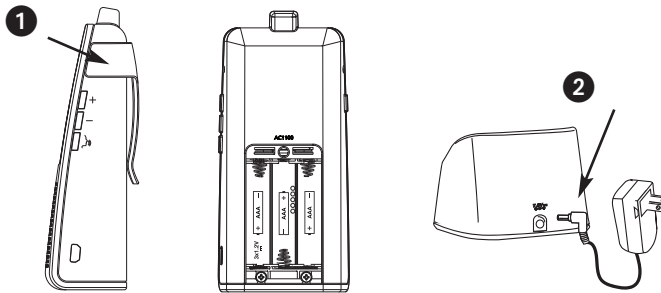
Nursery Unit back view



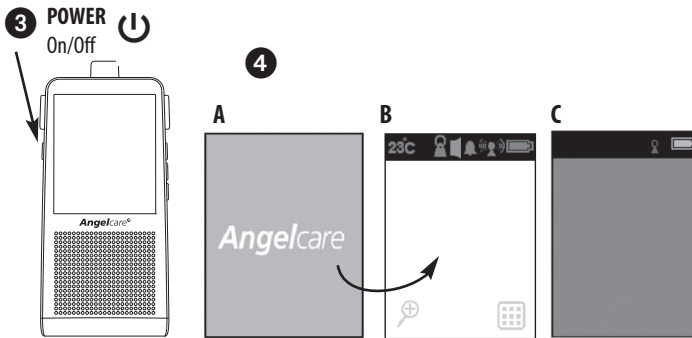
# ANGELCARE® MONITOR INSTALLATION

Please refer to SETTING pages for further details

## A. INSTALL THE PARENTS UNIT



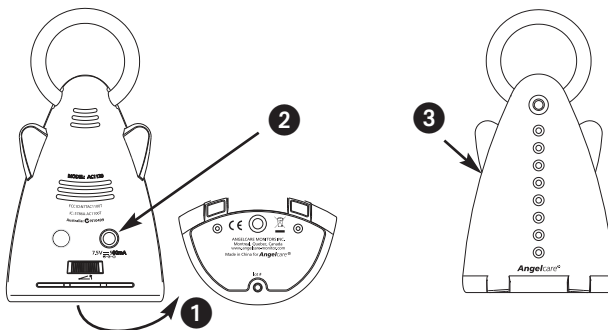
**Charge for a minimum of 10 continuous hours before using the monitor for the first time.**



**3. Turn the Parents Unit ON by pushing and holding the POWER button for 2 seconds.**

**4. Screen A will appear and then turn to the video caption B. When the Nursery Unit is OFF, screen C will appear and the Parents Unit will automatically shut off after 1 minute. In this case, turn ON the Nursery Unit and then turn ON the Parents Unit again.**

## B. INSTALL THE NURSERY UNIT AND SECURE ALL CORDS



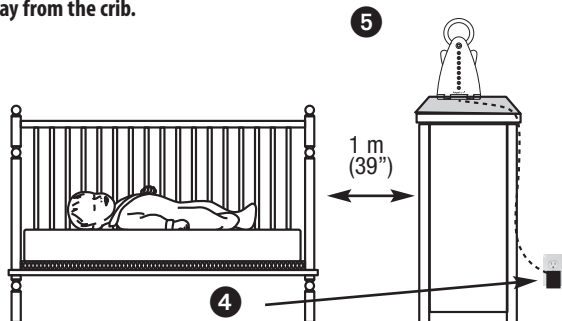
**1. Unscrew the bottom of the Nursery Unit and insert 3 AAA regular alkaline batteries.**

**2. Connect the AC adapter to the Nursery Unit and plug adapter to an electrical outlet.**

**3. Turn the Nursery unit ON by pushing and holding the left wing for 2 seconds.**



Nursery Unit must be placed minimum 1m (39") away from the crib.



4. Secure adaptor cords out of the child's reach.
5. Position the Nursery Unit facing the crib. The Nursery Unit can be installed on any standard tripod (not included).
6. Use the rotating knob to adjust the angle of the camera.

**IMPORTANT WARNING:** Strangulation Hazard. **Children have been STRANGLED by cords.** Keep cords more than 1 meter away from the crib. Securely tie and wrap, out of child's reach. Do not use with an extension cord.

## TESTING YOUR ANGELCARE® MONITOR

- Test your monitor **BEFORE** using it for the first time.
- The Angelcare® Monitor can be used with the factory settings or you can modify them in the menu.
- **ONLY** use rechargeable batteries in the Parents Unit.

Test your Angelcare® monitor **BEFORE** using it for the first time and then on a regular basis to make sure that it is functioning properly.

### 1. TEST THE SOUND

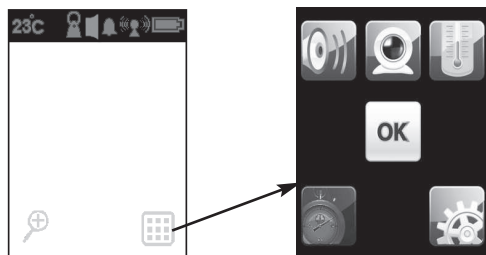
Make sure the sound mode is ON. Have someone else speak into the Nursery Unit or place a radio near the Nursery Unit. You should hear sound from the Parents Unit. If there is no sound, refer to the Troubleshooting section.

### 2. VERIFYING THE BATTERY MODE

Verify that the battery mode is functional by operating both units without the AC adapters. If the green light on the Nursery Unit does not light up, the batteries need to be replaced. If the Parents Unit doesn't light up and the screen does not appear, it needs to be recharged.

## 1. MAIN MENU SETTINGS

### INSTRUCTIONS



**IMPORTANT NOTE :** Press the OK icon to confirm all settings and adjustments done on the MAIN MENU.

When the screen remains idle for 1 minute, it will automatically return to video display. In such a case, any changes made will not be saved.

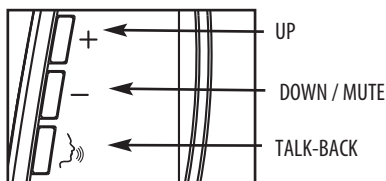
**Note:** When you are using the MAIN MENU screen, the sound transmission from the Nursery Unit to the Parents Unit is temporarily deactivated.

**To access the MAIN MENU screen - touch the MENU icon located at the bottom right corner of the screen.**

### 1.1 SOUND



SOUND  
ICON



Sound ON



MUTE

Sound transmission from the Nursery Unit can be ON or OFF.

1. Press sound icon to activate or deactivate.
2. Press OK to confirm setting.

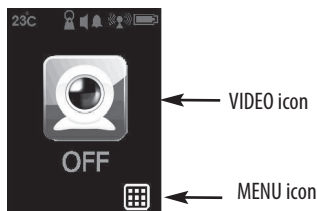
- Adjust the sound level with the UP (+) and DOWN (-) buttons.
- Press and hold the DOWN (-) button for at least 2 seconds to MUTE the sound.
- Press and hold the TALK-BACK button to talk to your baby.

**Note :** When the sound is on MUTE the icon on the top bar will appear with a "X".

### 1.2 VIDEO



VIDEO  
ICON



The video monitor function is activated when you receive your Angelcare® Monitor. If you wish to disable this function, press the VIDEO icon then press OK to confirm the setting.

1. The VIDEO icon will appear on the LCD screen when the video function is OFF.
2. To retrieve the video monitor function, press the MENU icon at the right bottom of the screen to go into the MAIN MENU, then press the VIDEO icon.
3. Press the OK to confirm the setting.

## 1.3 TIMER



TIMER ICON



TIMER DISPLAY

To start the TIMER, press the TIMER icon located on the MAIN MENU.

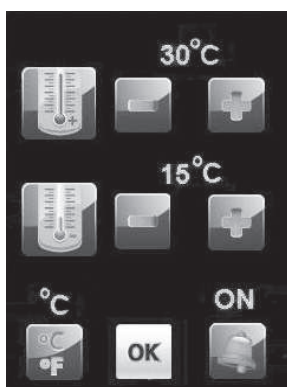
1. The screen will display the baby's room and the timer.
2. The timer runs from 0:00 (0 hours and 00 minutes) to a maximum of 5 hours and 59 minutes.
3. After showing "5:59", it will then stop automatically and disappear from video display.

**Note:** When Parents Unit is turned OFF, the timer will automatically reset and turn OFF.

## 1.4 TEMPERATURE



TEMPERATURE  
ICON



TEMPERATURE ALARM  
ICON



**Degrees can be shown in  
Fahrenheit or Celsius.**

The baby's room temperature is always indicated on the top bar of the screen. By setting the temperature alarm, you will be alerted if the room temperature is too cold or too hot. If the temperature that you have set goes out of range, 4 consecutive beeps will be heard every 4 seconds and the temperature alarm icon will be displayed in the center of the LCD screen.

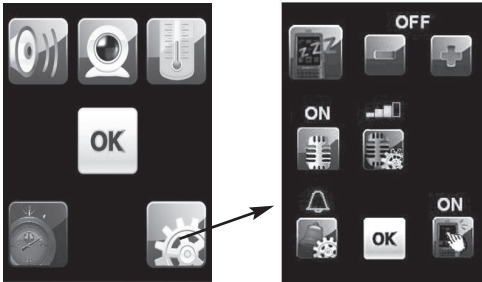
Press on the THERMOMETER icon on the MAIN MENU, then press the "+" and "-" for the temperature settings.

1. Maximum temperature is between : 15 and 32° Celsius / 59 and 90° Fahrenheit.
2. Minimum temperature is between : 5 and 20° Celsius/ 41 and 68° Fahrenheit.
3. The range between the minimum and maximum temperature is 4° C / 7° F. An error tone will be heard if you try to set it up below this range.
4. Press key at the left bottom corner of screen to switch the temperature scale to Fahrenheit or Celsius. The scale you selected will be indicated above the key.
5. If the temperature alarm is set ON, the word "ON" will appear above the alarm icon and the thermometer will appear on top of the video screen bar.
6. Press OK to confirm setting.

**Note:** If the temperature goes below 0°C (32°F) or over 45°C (113°F) the top bar will display **LO** (low) or **HI** (high) instead of the room temperature.

## 2. SUB-MENU SETTINGS

### INSTRUCTIONS



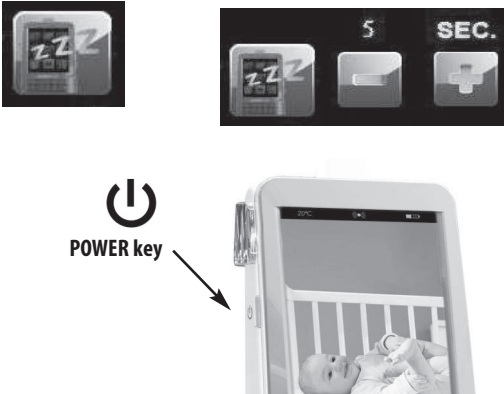
**IMPORTANT NOTE :** Press the OK icon to confirm all settings and adjustments done on the SUB-MENU.

When the screen remains idle for 1 minute, it will automatically return to video display. In such a case, any changes made will not be saved.

**Note:** When you are using the SUB-MENU screen, the sound transmission from the Nursery Unit to the Parents Unit is temporarily deactivated.

**To access the SUB-MENU screen - touch the SUB-MENU icon located at the bottom right corner of the MAIN MENU screen.**

### 2.1 SCREEN SAVER SETTINGS



The Screen Saver mode can be triggered manually by pushing the Parents Unit POWER key or can be set on automatic mode.

1. Press SUBMENU icon.
2. Press the SCREEN SAVER icon to select the automatic mode.
3. Press “-” or “+” to select 5, 10, 15 or 20 seconds which represent the delay before it goes in screen saver mode. You can select OFF which means no delay.
4. Press OK to confirm and return to MAIN MENU.
5. When video is on Screen Saver Mode, the SCREEN SAVER icon will appear in the middle of the screen. Push the icon to go back to the camera caption.

**Note :** Do not push the POWER key for more than 2 seconds since this will shut down the Parents Unit.

### 2.2 VOX ADJUSTMENT



Press on VOX icon to activate or deactivate the voice activated mode.



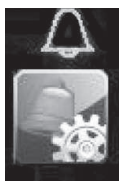
Vox sensitivity levels.

The Vox function is the sound reception on “voice activated mode”. The microphone sensitivity can be adjusted as follows: A low Vox microphone sensitivity means that the sound from the baby’s room has to be louder to trigger sound transmission to the Parents Unit.

1. Press the SUB-MENU icon.
2. Press on VOX icon to activate or deactivate.
3. Press the microphone sensitivity key to the desired level 1 (lowest) to 4 (highest).
4. Press OK to confirm and return to the MAIN MENU.

**Note :** If VOX is turned OFF, the sound reception will be continuous.

## 2.3 ALARM SET-UP



Sound alarm



Sound alarm and vibration



Vibration only

1. Press the SUB-MENU icon.
2. Press the ALARM icon.
3. You can select one of the three following alarm modes: Sound alarm, sound alarm and vibration or vibration only. The symbol representing your choice will appear on top of the ALARM icon.
4. Press OK to confirm and return to MAIN MENU.

**Note:** When the “vibration only” mode is selected, the alarm will not sound on the Parents Unit but it will still sound on the Nursery Unit. When the Parents Unit is placed in the charging unit, vibration is disabled and will temporarily change to sound alarm only mode. During main menu and settings operations, no sound will be transmitted to the Parents Unit. The alarms and notifications are temporarily turned off.

## 2.4 BATTERY CAPACITY DISPLAY



- Battery capacity icon is always displayed on the LCD screen top bar.
- When battery capacity is low - the Parents Unit will emit a warning beep every 15 seconds, to indicate that the batteries need to be recharged.
- Although the batteries at 1/3 capacity will support normal operations of your monitor, it is highly recommended to fully recharge the batteries at this stage (A).
- For FULL battery capacity, you must charge the Parents Unit for a minimum of 10 hours in the Parents Unit cradle.
- While the Parents Unit is recharging, the battery icon will run as shown on (B).

## 2.5 KEY TONE SETTINGS



1. To deactivate the key tone sound, press the KEY TONE icon.
2. Choose ON or OFF.
3. Press OK to confirm and return to the MAIN MENU.

## 2.6 LINK BETWEEN UNITS



Good link



Low link



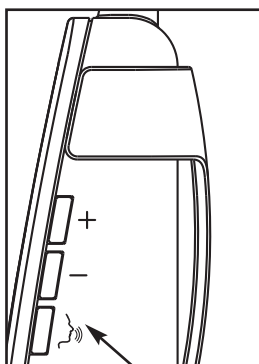
Lost link



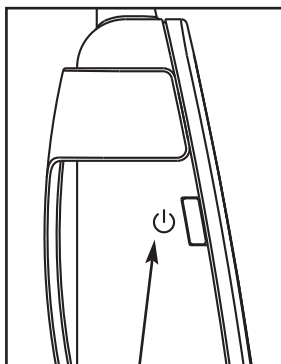
Out of range Icon  
on LCD screen



Nursery Unit 1 icon



Talk-Back Button



Power Key

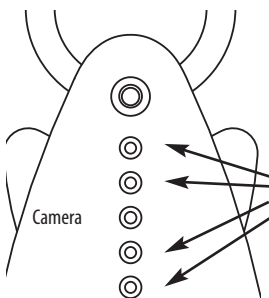
- The antenna icon, displayed on the LCD screen, indicates the strength of the link to the Nursery Unit.
- When the link between the Parents Unit and the Nursery Unit is lost, the OUT OF RANGE alarm icon will be displayed on the Parents Unit screen.
- On the top bar, the LOST LINK icon will be displayed.

**In case the connection between the Nursery Unit and the Parents Unit is completely lost, you can follow these steps to restore the connection.**

1. Make sure the Parents Unit and the Nursery Unit are turned off.
2. Turn the Nursery Unit on.
3. Press and release the left wing 4 times. The night light will flash.
4. Turn the Parents Unit on. A blue screen will appear with the lost link icon on the top bar.
5. While pressing the talk-back button on the right side of the Parents Unit, press and release the power key on the Parents Unit.
6. A screen for LINK is then shown on the Parents Unit's screen. Press Nursery Unit 1 icon, then press the "+" and then press the "X".
8. Video will appear on the Parents Unit's screen, meaning that the connection was successfully restored.

## 3. ADDITIONAL FUNCTIONS

### 3.1 INFRARED NIGHT VISION



4 Infrared LEDs



There are 4 built-in infrared LEDs to display a better image on the Parents unit when there is no sufficient lighting in the room. When the infrared LEDs are in use, the image is shown in black and white on the Parents Unit screen.

The Vision mode is always on AUTO when you turn the Parents Unit ON. Press the NIGHT VISION icon to scroll through the 3 available modes.



1. **AUTO:** the infrared LEDs are turned on automatically when the lighting is not sufficient. The image transition takes 20 seconds.



2. **ON:** The infrared LEDs are ON at all times.

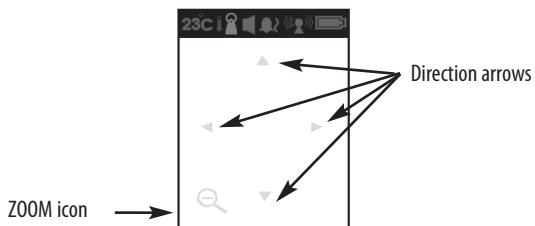


3. **OFF:** The infrared LEDs are OFF at all times.



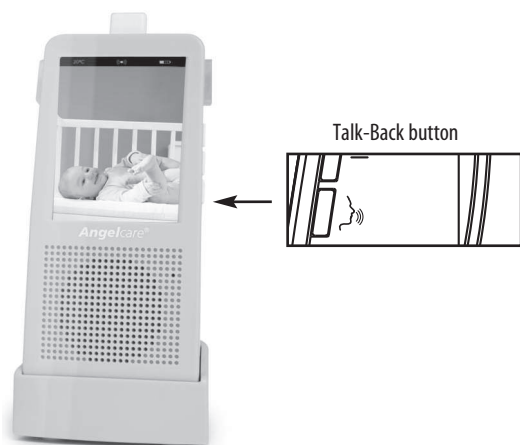
**The Moon icon appears when the infrared LEDs are on.**

### 3.2 ZOOM MODE



1. Press the ZOOM icon key in video display to enter ZOOM mode.
2. In ZOOM mode, the video display is enlarged twice the normal size and the menu icon disappears.
3. Four directions arrows are displayed on the LCD screen. Press on the direction you wish to see enlarged.
4. To return to the normal video display, press the ZOOM icon again.

### 3.3 TALK-BACK BUTTON



The Talk-Back button allows you to reassure your baby until you get to the baby's room, or to communicate with someone taking care of the baby.

1. Press and hold the Talk-Back Button to talk
2. Release to stop the communication.

### NO SOUND IS BEING TRANSMITTED

- Bring Parents Unit closer to Nursery Unit.
- Check/replace batteries or recharge Parents Unit.
- Check connections or change to another electrical outlet.
- Ensure both units are ON.
- Check on the top bar of the Parents Unit to see if the Monitor is on "MUTE" instead of "ON". Refer to the Sound Section.

### NURSERY UNIT POWER ON INDICATOR (GREEN LIGHT) DOES NOT LIGHT UP

- Check connections or change to another electrical outlet.
- Push and hold the left wing for 2 seconds to turn the Nursery Unit ON.

### WEAK RECEPTION

- Bring units closer together.
- Change the position of one or both units.
- Place units on a flat surface away from baby's reach.
- Replace the batteries or recharge Parents Unit.

### STATIC, DISTORTION, INTERFERENCES (FROM OTHER MONITORS, WIRELESS PHONES, WALKIE-TALKIES, ETC...)

- Rotate Parents Unit or move it away from source of interference.

### FEEDBACK (LOUD NOISES EMITTED FROM THE PARENTS UNIT)

- Move units farther apart (at least 3 meters/10 feet apart).
- Decrease volume on Parents Unit.

### THE PARENTS UNIT SCREEN IS BLACK (PARENTS UNIT IS OFF)

- Turn the Parents Unit back ON by pushing and holding the power key for 2 seconds.
- Replace the batteries or recharge Parents Unit.

---

The Angelcare Baby Monitor is a Personal care Product.

Please DO NOT return it to the store, but contact us initially for advice and assistance:

Angelcare Helpline 0845 009 1789; Monday to Friday, 10am-4pm

Website: [www.angelcare-uk.co.uk](http://www.angelcare-uk.co.uk); Email: [helpline@angelcare-uk.co.uk](mailto:helpline@angelcare-uk.co.uk)

---



#### Protect the environment!

This electronic equipment contains reusable material and must not be disposed with domestic waste. Please take it to a collecting point for electric and electronic equipment (ask your local authorities for details).



LIMITED WARRANTY

Angelcare® warrants to the original owner of this product that Angelcare® rechargeable video and sound monitor (model AC1120) is free from any material and workmanship defects, for a period of one (1) year from the date of the original purchase. If this monitoring system fails to function properly when used as directed under normal conditions within the one-year period, Angelcare® will either repair or replace the product, at our discretion, free of charge. Please contact your distributor.

The product must be accompanied by a proof of purchase, either a bill of sale or other proof that the monitoring system is within the warranty period. Angelcare® will bear the cost of repairing or replacing the product and shipping it back to you.

**This warranty does not apply to a product which has been damaged as a result of improper maintenance, an accident, improper voltage supply or any other form of misuse. The warranty is also void if the owner repairs or modifies the product in any way. Angelcare® is not liable for any incidental or consequential damages with regard to this product. The warranty also excludes any liability other than what is stated above. No other warranty is given.**

LEGAL RIGHTS VARY FROM COUNTRY TO COUNTRY. SOME COUNTRIES DO NOT ALLOW THE EXCLUSION OR LIMITATION OF INCIDENTAL OR CONSEQUENTIAL DAMAGES, SO THE ABOVE LIMITATIONS MAY NOT APPLY TO YOU.

WE ARE NOT IN ANY WAY RESPONSIBLE FOR ANY OUTCOME RESULTING FROM THE USE OF THIS PRODUCT.

**IMPORTANT!** This Angelcare® monitor is a personal care product. Please do not return this product to the store. If you have questions or need help, please call your distributor before returning this product.

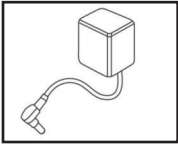
FACTORY SETTINGS AND TECHNICAL SPECIFICATIONS

Sound Mode .....	ON
Camera .....	ON
Parents Unit speaker volume .....	LEVEL 3 OF 6
VOX .....	OFF
VOX level (microphone sensitivity) .....	LEVEL 2 OF 4
LCD .....	ON
Temperature scale.....	Celsius
Timer .....	OFF
Temperature Alarm .....	OFF
High Temperature Alarm .....	30°C
Low Temperature Alarm .....	19°C
Alarm mode .....	Sound alarm only
Night View .....	Auto

- Range:** up to 200 m - 656 ft.
- Number of Channels:** Europe: 64 channels, USA/Canada: 19 channels
- Power Supply:** Three AAA alkaline batteries (not included) or 7.5V AC adapter for Nursery Unit.
- Three AAA rechargeable batteries and 7.5V AC adapter for Charging Base for the Parents Unit.
- CAUTION:** To reduce the risk of electric shock, do not expose this product to rain or moisture.
- Danger of explosion if battery is incorrectly replaced. Batteries included: 3 AAA NIMH rechargeable batteries, manufactured by GPI INTERNATIONAL LIMITED (GN60AAAHC, 1.2V 600mAh) and by HIGHPOWER TECHNOLOGY CO., LTD (HFR-44AAAJ600, 1.2V 600mAh). **They may only be replaced by 3 AAA NIMH rechargeable batteries.**
- Batteries:**
- Do not mix old and new batteries
  - Do not mix alkaline, standard (carbon-zinc), or rechargeable (Ni-Cd, NIMH, etc.) batteries
- Transmission:**
- Data transmission between the Parents Unit and Nursery Unit is made on the 2.4GHz frequency.

ErP COMPLIANCE

- UK – Malta – Cyprus – Singapore**
- Use only Angelcare® brand power supply - model number T07505B002
- EUROPEAN UNION**
- Use only Angelcare® brand power supply - model number T07505V002



*Angelcare*®  
FOR YOUR PEACE OF MIND