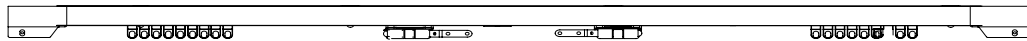


Corded curtain track

Thank you for purchasing this product. Please read the instructions in full carefully before use to ensure safe and satisfactory operation of this product.



Pre-assembly preparation

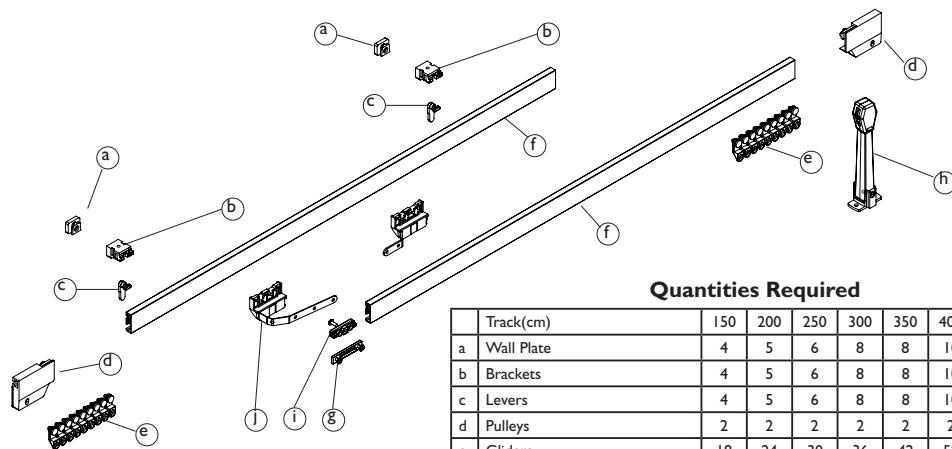
Please check the pack contents before attempting to assemble this product. A full checklist of components is given in this leaflet. If any components are missing, please contact the retailer from whom you bought this product.

This product takes approximately **30 MINUTES** to assemble with **1 PERSON** for a short straight length. For a bay window this product takes approximately **40 MINUTES** to assemble with **2 PEOPLE**.

Necessary Tools



Fittings and parts checklist



Each Bracket is supplied with
 - 1x Screw
 - 1x Wall plug

Quantities Required

Track(cm)	150	200	250	300	350	400	500
a Wall Plate	4	5	6	8	8	10	12
b Brackets	4	5	6	8	8	10	12
c Levers	4	5	6	8	8	10	12
d Pulleys	2	2	2	2	2	2	2
e Gliders	18	24	30	36	42	52	60
f Track	1	1	2	2	2	2	2
g Joiner	0	0	1	1	1	1	1
h Tension Cord Pulley	1	1	2	2	2	2	2
i Centre Pulley	0	0	1	1	1	1	1
j Master Slide	2	2	2	2	2	2	2

Recommended Maximum Curtain Weight

Maximum Curtain Weight: 11kg

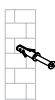
Recommended maximum curtain weight is calculated after fitting the track to a secure wooden batten. If you are unsure if the product is suitable please ask a partner in your John Lewis store.

Wall fixing - if in doubt seek professional advice



Wood

If fixing to wood make sure that it isn't chipboard as screws can easily pull away from the core structure



Brick or Masonry

Use an appropriate wall plug provided you are sure your wall is sound



Cavity wall

Special toggle wall plugs are needed. Seek expert advice

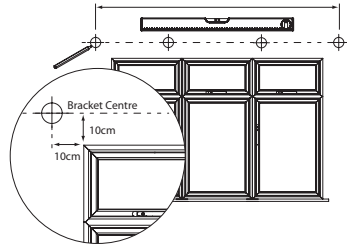
Step by step assembly instructions

Step One

Marking bracket positions

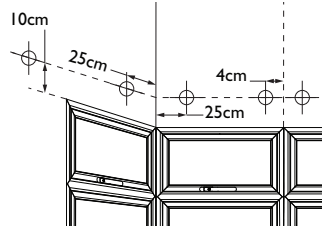
Straight Window

1. Firstly measure your window making sure your track is at least 30cm longer to ensure you have enough track to complete the window BEFORE Installation. **The track must be fitted at least 1.5m from the floor.**
2. Mark a minimum of 10cm above each corner of your window, with a pencil draw a feint line from one mark to the other using a spirit level.
3. Increase your line length a further 10cm either side and mark this position.
4. The remaining brackets should be equally spaced along the total length.



Bay Window

1. Mark a feint line 10cm above your window with a pencil using a spirit level. **The track must be fitted at least 1.5m from the floor.**
2. Mark the centre of the window. Then mark the centre bracket positions, 4cm either side of this central mark.
3. Mark the positions of the corner brackets 25cm from the corner of the bay.
4. Mark the position of the end brackets 4cm shorter than the required end position of the track. (see Step Three for measuring your track)
5. Space the remaining brackets positions evenly along the straight runs.

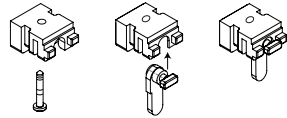


Ceiling fix

This product can be fixed to a ceiling in either straight or bay windows.
NOTE: Wall plates are not required and you should screw directly through the top of the standard brackets.

These instructions allow for a projection of 16mm from the wall. If you would like to alter this projection you will have to make allowances to the bracket positions.

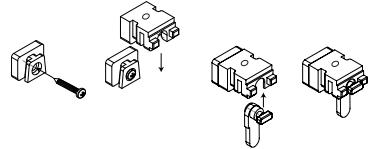
The track fits in the same way as wall fixing.



Step Two

Fitting brackets

1. Drill the hole positions and ensure that you use the correct wall plugs and screws for the type of wall to which you are mounting your track. If you are unsure please consult your local builders merchant or DIY store.
2. Fix your wall plate to the wall on your marked positions.
3. Fit brackets onto the wall plates and insert levers into brackets, leaving the levers vertical (unlocked position).

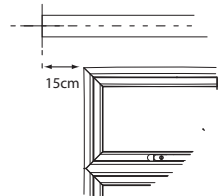


Step Three

Measuring the track

Straight Window

1. The track should extend approximately 15cm either side of your window.
2. If your track is in two lengths then the track lengths should be equal, with the join in the centre.
3. Mark your track lengths in preparation for cutting and offer up the track to the window to check the fit.

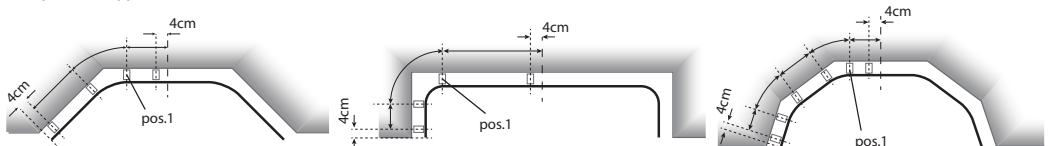


Bay Window (Aluminium track)

1. Starting from the centre of the window (previously marked) work your way outward.
2. Measure the distance from the centre of the window to the bracket closest to the first bay corner (Pos. 1).
3. Measuring from one end of the track, mark this distance on the track.
4. Mark the mid point of the bend 18cm further along the track.
5. Start bending the track around your knee ensuring you create a smooth gradual curve. The bend radius should be a minimum of 22.5cm
6. Bend the Track slowly and carefully, offering the track up to the window regularly to ensure the bend is correct.
7. Additional bends can be added by repeating the steps above.
8. Offer the rear channel of the track to brackets and lock into place by rotating lever through 90° to a horizontal position.
9. Mark your track lengths 4cm after the last bracket in preparation for cutting.
10. Repeat for opposite side and remove the track from the brackets.

Bay Window (Plastic track)

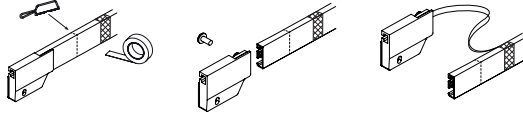
1. Starting from the centre of the window (previously marked) work your way outward.
2. Offer the rear channel of the track to brackets and lock into place by rotating lever through 90° to a horizontal position. Gently warm track where bends are required, by rubbing dry cloth over the bend area (Do not expose to direct heat e.g. hairdryer).
3. Mark your track lengths 4cm after the last bracket in preparation for cutting.
4. Repeat for opposite side and remove the track from the brackets.



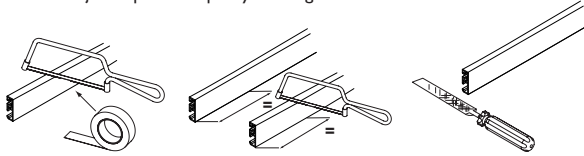
Step Four

Cutting The Track

1. Mark the track to the correct length
2. 10 cm inward from the cut mark, mask the track to prevent the product becoming uncorded.
3. Remove the end pulley and move the cords away from the track taking care not to twist the cords.



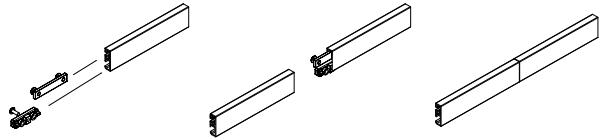
4. Mask the cut area to protect the track.
 5. Cut the track on the marked line using a sharp hacksaw.
 6. Remove any sharp edges using a file.
 7. Replace the pulley taking care not to twist the cords.
- NOTE: If joining two tracks, cut an equal amount from the ends of the track and not the centre meeting point to ensure a smooth even centre joint. If using a single section of track just replace the pulley housing.



Step Five

Joining the Track

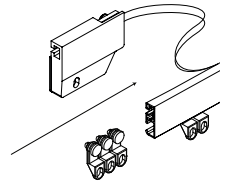
1. Slide the joiner half way into the top profile of one track.
2. Tighten the screw.
3. Slide the other track onto the joiner and butt the tracks together and ensure both screws are tight.



Step Six

Adding Gliders

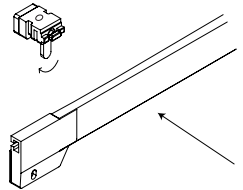
1. Remove end pulley.
 2. Slide the correct number of gliders onto the bottom channel of the track.
 3. Replace end pulley.
- NOTE: you should use approximately 1 per 10cm run of track.
- Additional gliders can be added if necessary, these are available as an optional extra and can be purchased from any John Lewis store.



Step Seven

Fitting the Track

1. Starting at one end, locate the back of the track to the first fixing bracket allowing 5cm of track to project at the end from the centre of the bracket. Lock the first bracket by rotating the lever through 90 degrees to a horizontal position.
2. Fit the track to each bracket in turn then lock into position.
3. Once all are fitted and securely tightened you should now be ready to hang your curtains.
4. If fitting into a bay, start at the centre and work outwards, 2 people may be required.

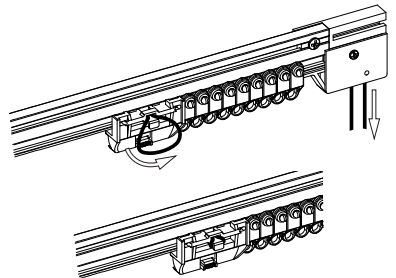


Step Eight

Centring The Master Slides

1. Pull outer cord until looped carrier is tight against gliders.
2. Ease cord loop out of master carrier (this will reduce the length of the pull cord) and pull inner cord loop until knotted carrier is tight against gliders.
3. Pull outer cord pull to reduce excess cord on looped master carrier and rescue loop.

NOTE: If knotted master carrier reaches gliders first, pull out loop from looped master carrier and move carrier by hand until it reaches gliders. Pull outer cord to reduce excess loop on looped master carrier and rescue.



Step Nine

Installing The Cord Tension Pulley

1. Go to masterslide with the knotted cord ends and pull down on the right hand knot to reduce the cord loop.

To prevent the risk of child strangulation the cord loop must be 1m maximum from the rail and the tension pulley must be fitted.

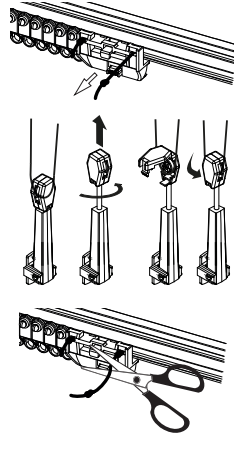
NOTE: it is the responsibility of the person fitting the rail to ensure that the cord length meets the stated requirements.

2. Using the two screws supplied, fix the tension pulley in the correct position, directly in line with the pull cord.

3. Fully extend pulley housings and rotate 90° to lock. Press the cover release button on the tension pulley. Lift the cover and loop the cord around the pulley wheel. Close the cover and release the lock on cord tensioner by rotating 90°.

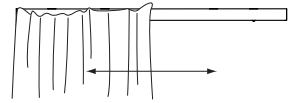
4. Take up the slack of the cord and tie a knot behind the masterslide arm. The cord will now be fully tensioned. If there is insufficient tension in the cord, reduce the cord length by adjusting the knot behind the masterslide arm. Cut the excess cord in front of the knot.

If the cord becomes twisted, simply rotate the head of the pulley to untwist it. The track is now ready to accept curtains.



Step Ten

1. Test the installation by drawing the curtains across the track.



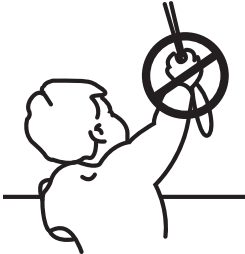
Safety Instructions



WARNING



It is essential that these instructions are followed to ensure the product works correctly and to prevent the risk of young children becoming entangled in the cord loop. If in doubt consult a professional fitter for advice.



WARNING

Young children have been strangled by loops in pull cords, chains, tapes and inner cords that operate the product.

To avoid strangulation and entanglement, keep cords out of the reach of young children.

Cords may become wrapped around a child's neck.

Move cots and furniture away from window covering cords.

Do not tie cords together.

Make sure cords do not twist and create a loop.

PERSONS IN CHARGE OF CHILDREN ARE ULTIMATELY RESPONSIBLE FOR FOLLOWING THE SAFETY INSTRUCTIONS PROVIDED BY THE MANUFACTURER AND TO USE ANY SAFETY DEVICE SUPPLIED.

Only use a Step Ladder to install this product.

Do Not over reach. Always move the Step Ladder so that you are in a safe working position.

Do Not hold or lean on the track to support your weight.

We recommend you use two people for installation of larger tracks.

Take care when using power tools, use of a Residual Current Device (RCD) is recommended.

Always use eye protection when drilling.

Beware of hidden pipe runs and cables.

No liability will be accepted for damage or injury caused by incorrectly installed or assembled furniture.

PLEASE KEEP OUT OF THE REACH OF YOUNG CHILDREN.

SMALL PARTS - CHOKING HAZARD

PLEASE KEEP THESE INSTRUCTIONS FOR FUTURE REFERENCE

PLEASE KEEP THE BATCH CODE ON THE PACKAGING FOR FUTURE REFERENCE IF ANY QUERIES

John Lewis Partnership 171 Victoria Street London SW1E 5NN

www.johnlewis.com