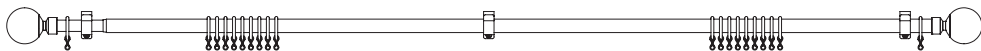


Extendable curtain pole

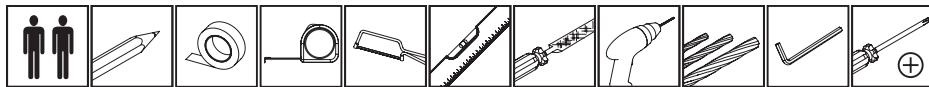
Thank you for purchasing this curtain pole. Please read the instructions carefully before use to ensure safe and satisfactory operation of this product.



Pre-assembly preparation

Please ensure instructions are read in full before attempting to assemble this product

Necessary Tools



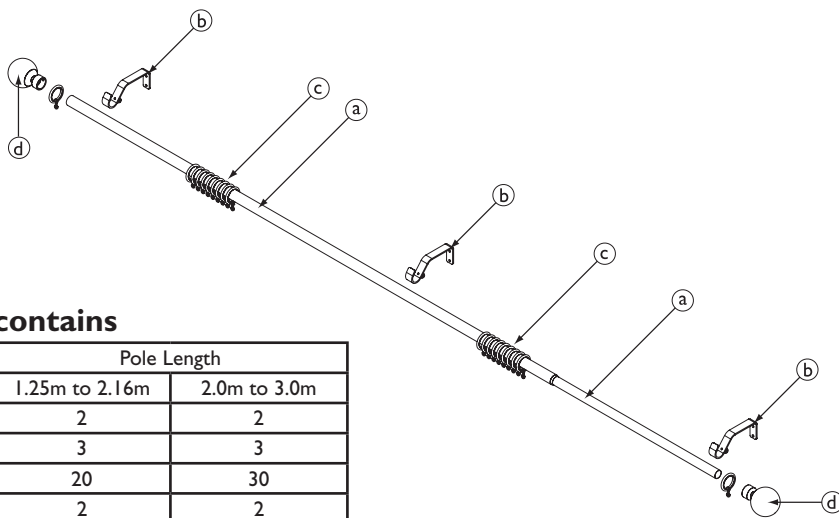
Please check the pack contents before attempting to assemble this product. A full checklist of components is given in this leaflet. If any components are missing, please contact the retailer from whom you bought this product.

This product takes approximately **30 MINUTES** to assemble with **2 PEOPLE**.

The fittings pack contains **SMALL ITEMS** which should be **KEPT AWAY FROM YOUNG CHILDREN**.

Read this leaflet in full before commencing assembly.

Fittings and parts checklist



Pole set contains

		Pole Length	
Part		1.25m to 2.16m	2.0m to 3.0m
a	Pole	2	2
b	Brackets	3	3
c	Rings	20	30
d	Finials	2	2

Each Pole set is supplied with 6x Screws - 6x Wall plugs - 1x Allen key


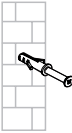
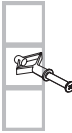
Recommended Maximum curtain weights

16/19mm Extendable - Max weight 14Kg

25/28mm Extendable - Max weight 20Kg

Recommended maximum curtain weight is calculated after fitting the pole to a secure wooden batten. If you are unsure if the product is suitable please ask a partner in your John Lewis store.

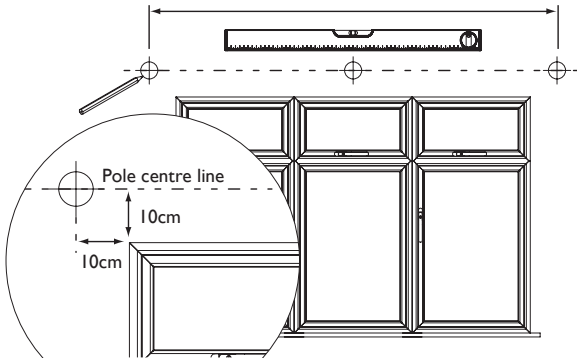
Wall fixing - if in doubt seek professional advice

	Wood If fixing to wood make sure that it isn't chipboard as screws can easily pull away from the core structure		Brick or Masonry Use an appropriate wall plug provided you are sure your wall is sound		Cavity wall Special toggle wall plugs are needed. Seek expert advice
---	---	---	--	---	--

Step by step assembly instructions

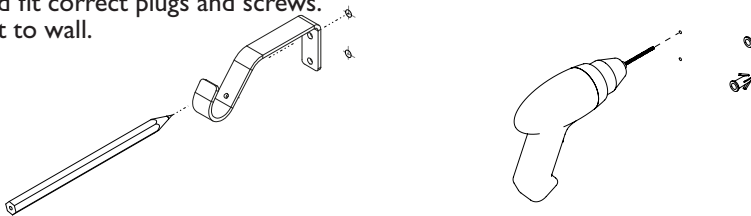
Step One

1. Measure windows



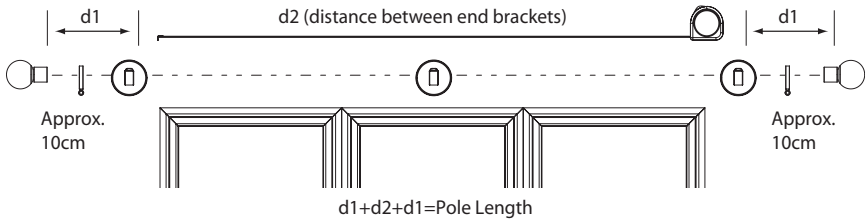
Step Two

1. Use the correct wall plugs and screws for the type of wall to which you are mounting your pole. If you are unsure please consult your local builders merchant or DIY store.
2. Use bracket as template to mark bracket positions onto the wall.
3. Drill holes and fit correct plugs and screws.
4. Screw bracket to wall.



Step Three

1. Calculate the Length of the pole



Step Four

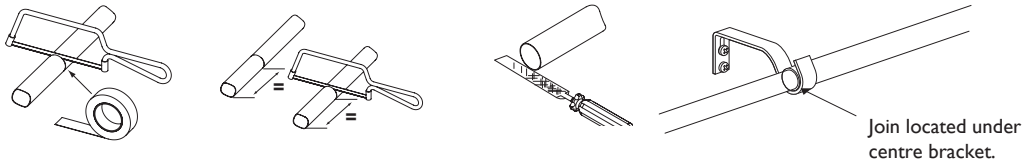
1. Adjust the pole to length required by sliding the inner pole out of the outer pole. Take care to leave the ring guide in place between the two poles.



Step Five

You may wish to enhance the look and performance of your curtain pole by centralising the join and hiding it behind the centre bracket. To do this follow the steps below.

1. Measure the centre point and mark the position on the outer pole.
2. Carefully remove the inner pole from the outer pole, taking care not to damage the central joiner piece.
3. Remove the Finial from the outer pole.
4. Mask the area to be cut to avoid damaging pole.
5. Using a hacksaw, cut the poles at the marked position.
6. Remove burrs and sharp edges with a file and reverse the pole so that the cut end goes into the Finial.
7. Re-fit the Finial.
8. Refit the inner and the outer pole, and the joining piece, taking care not to damage the joining piece when inserting the poles.



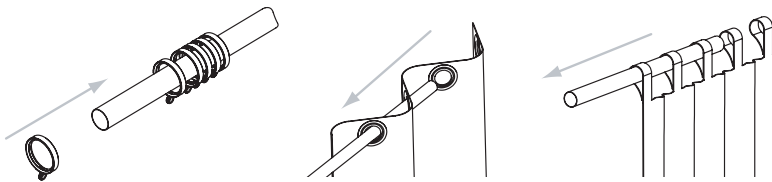
Step Six

Standard Curtains

1. Leaving 2 rings to one side, slide the remaining rings onto pole, you will require approximately 1 ring per 10cm of Pole.
2. When using a centre bracket an equal number of rings will need to be used either side of the bracket.

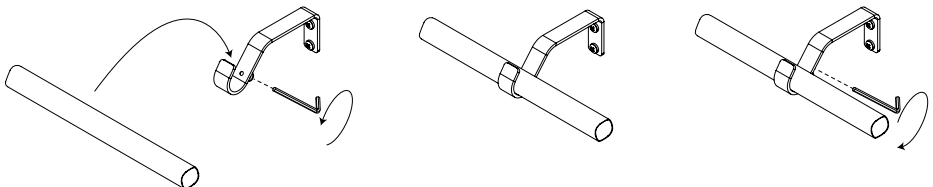
Eyelet & Tab Top Curtains

1. Slide the curtain onto the pole.
2. Leave the last eyelet or loop hanging from the end of the pole.
3. When using a centre bracket a curtain will need to be hung from each end of the pole.



Step Seven

1. Loosen pole retainer.
2. Place pole in bracket.
3. Centralise the pole between the brackets.
3. Tighten pole retainer until the pole does not slide in the bracket.



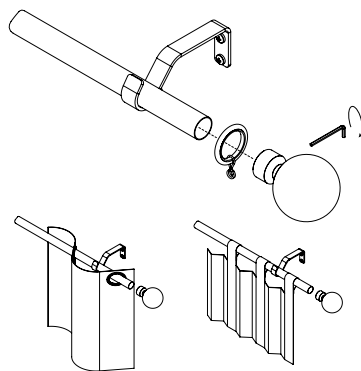
Step Eight

Standard Curtains

1. Position one ring between the bracket and the finial.
2. Push finial onto the end of the pole.
3. Tighten the retaining screw.

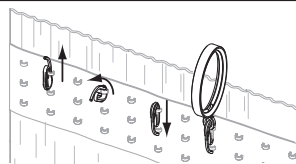
Eyelet & Tab Top Curtains

1. Position one loop or eyelet between the bracket and the finial.
2. Push finial onto the end of the pole.
3. Tighten the retaining screw if applicable.



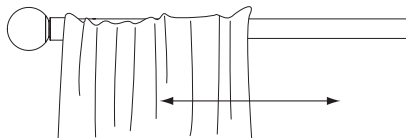
Step Nine

1. Equally space curtain hooks along curtain header, you will require one hook for every ring.
2. Place hooks through the eyelet on the ring.



Step Ten

1. Test the installation by drawing the curtains across the pole.



Safety Instructions

Only use a Step Ladder to install this product.

Do Not over reach. Always move the Step Ladder so that you are in a safe working position.

Do Not hold or lean on the track to support your weight.

We recommend you use two people for installation of larger tracks.

Take care when using power tools, use of a Residual Current Device (RCD) is recommended.

Always use eye protection when drilling.

Beware of hidden pipe runs and cables.

No liability will be accepted for damage or injury caused by incorrectly installed or assembled furniture.

PLEASE KEEP OUT OF THE REACH OF YOUNG CHILDREN.

SMALL PARTS - CHOKING HAZARD

PLEASE KEEP THESE INSTRUCTIONS FOR FUTURE REFERENCE

PLEASE KEEP THE BATCH CODE ON THE PACKAGING FOR FUTURE REFERENCE IF ANY QUERIES