

Jackets	Size 38R MMT
	cm
Centre back length	75.5
Chest 2.5cm below the armhole ( front edge including wr	53.5
(front edge including wrap to	48.5
cuff	65
Across shoulders	46.5

Trousers	Size 32 MMT
	cm
Waist width (waistband closed on the flat)	42
Front rise- Excluding waistband	25.5
Back rise- Excluding waistband	33.5
unfinished hem)	20.5
hem	92

Notes: +/-2.5cm for short and long body sleeve lengths  
chest and waist measurements are taken with the garment open on the flat, front edge to cent  
back seam.

Macs	SB Mac (Raglan)
	cm
Centre back length ( Neck seam to hem)	94.5
Chest 2.5cm below the armhole (garment closed)	56
(garment closed)	52
cuff	89.5
18cm down from the HSP)	43

	DB Mac
	cm
Centre back length ( Neck seam to hem)	92.5
Chest 2.5cm below the armhole (garment closed)	56
(garment closed)	52
cuff	65
point to shoulder point)	49
Across back (18cm down from the HSP)	45.5

Notes: Chest and waist measurement taken with the garment closed on the flat

Shirts	Classic Fit- Size 15 5"
	cm
Centre back length ( Neck seam to hem)	79.5
Chest 2.5cm below the armhole (garment closed on the f	53.5
(garment closed on the flat)	50.5
Hem width at lower edge (	
garment closed on the flat)	53.5
seam to cuff hem)	89.5
Across shoulders ( Shoulder	
point to shoulder point)	47
Cuff depth	7
Neck circumference ( Centre	
button to centre buttonhole)	39

Semi cutaway collar	
	cm
Collar depth at centre back	4.5
Collar point	7
Collar spread	10

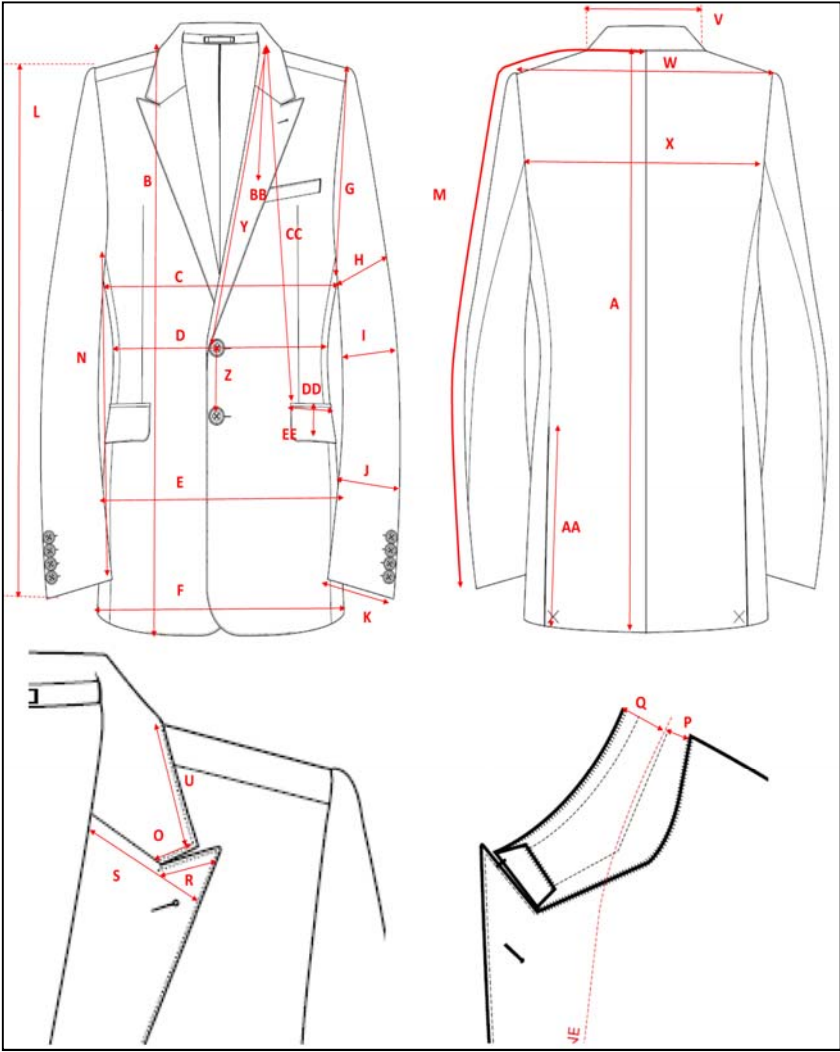
  

Cutaway collar	
	cm
Collar depth at centre back	4.6
Collar point	7
Collar spread	12.5

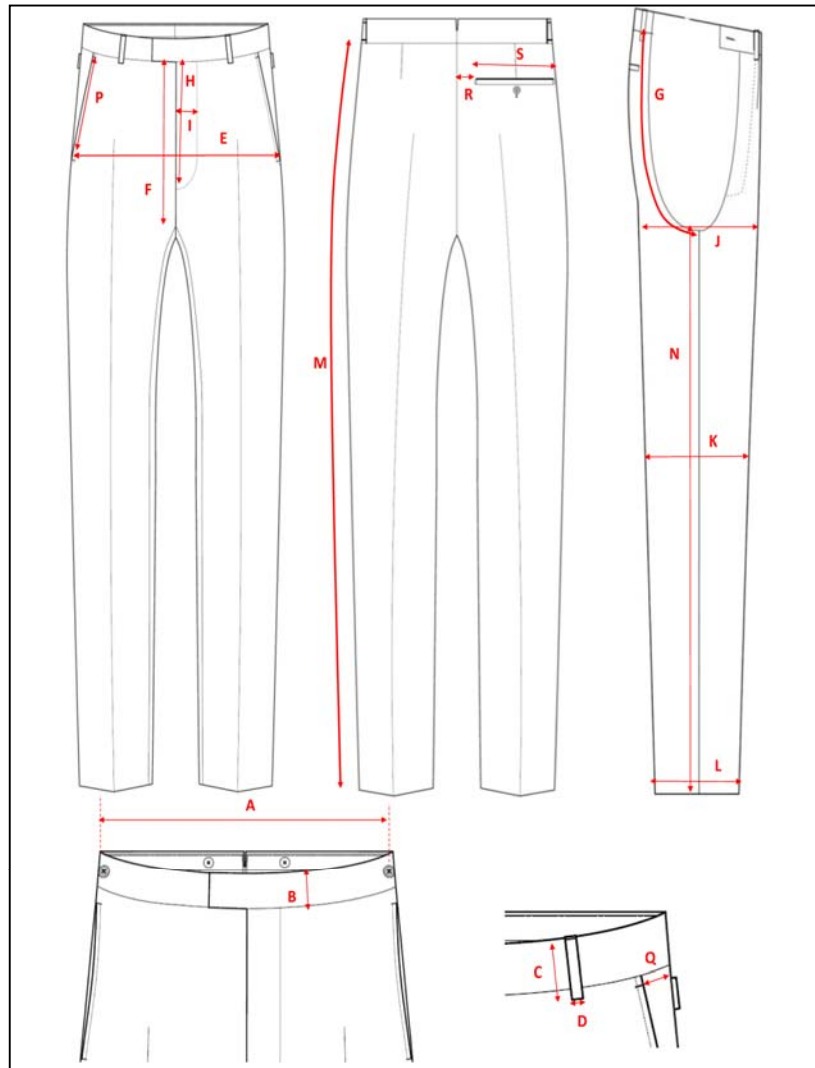
Buttndown collar	
	cm
Collar depth at centre back	4.5
Collar point	7
Collar spread	7.5

How to measure guide- Jackets



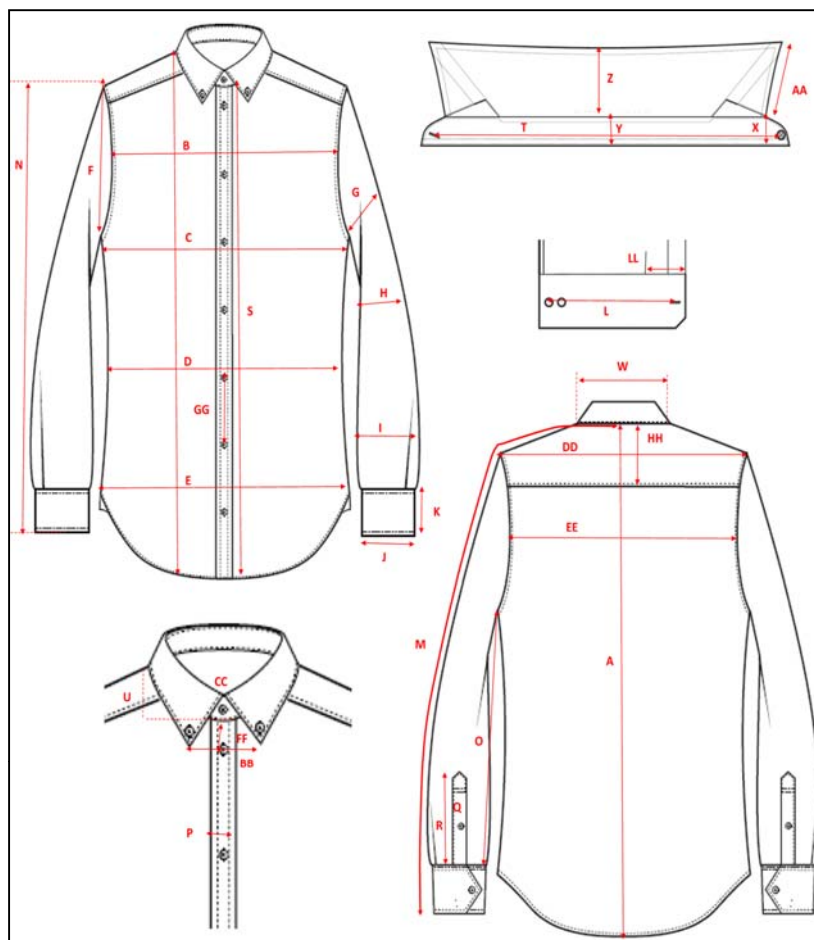
A	Centre back length ( Neck seam to hem)
B	Front length ( HSP to Hem edge)
C	Chest ( 2-5cm below armhole, Jacket closed at the flat )
D	Waist width ( 8cm up from the jet pocket opening, Jacket
E	Hip/Seat ( 32cm down from the armhole, Jacket closed on the
F	Hem ( At opening, Jacket closed on the flat )
G	Armhole- Straight
H	Bicep ( At armhole, 90 degree angle to the outside sleeve )
I	Elbow width ( 18cm down from armpit at 90 degrees to outside
J	Forearm width ( 17cm up from the cuff )
K	Cuff width ( across cuff opening )
L	Sleeve length ( Sleeve head to sleeve cuff at opening )
M	Sleeve length CB to cuff ( CB across shoulders to cuff opening
N	Underarm ( along seam )
O	Collar point ( from lapel gorge seam to point )
P	Stand height at centre back
Q	Collar height at centre back
R	Lapel point ( from lapel gorge seam point )
S	Lapel width from roll line ( peak )
T	Lapel width from roll line ( notch )
U	Collar leaf edge length from shoulder ( shoulder seam to collar
V	Back neck width ( HSP to HSP )
W	Across shoulders ( Shoulder seam at sleeve head to shoulder
X	Across back ( 15cm down from the HSP across back )
Y	1st button position from HSP
Z	Button spacing ( centre button to centre button )
AA	Vent length ( Top of vent at opening to vent hem )
BB	Welt pocket position from the HSP ( HSP to RHSAW top corner
CC	Jet flap pocket position from the HSP ( HSP to the corner close
DD	Pocket length
EE	Pocket width

## How to measure guide- Trousers



A	Waist width ( internal waist leasure, closed on the flat )
B	Waistband depth
C	Belt loop length
D	Belt loop width
E	Hip ( 20cm from the top of the waistband on the curve )
F	Front rise ( excluding waistband along front gusset seam )
G	Back rise ( excluding wasitband along back gusset seam )
H	Zip opening length
I	J stitch width ( zip fly stitching width )
J	Thigh width ( at gusset )
K	Knee width ( measured 32cm down from the crotch )
L	Leg opening ( 10cm up from the hem )
M	Outer leg length ( excluding waistband, un finished hem )
N	Inside leg length ( at unfinished hem )
O	Hem turn up depth
P	Pocket length at opening ( bar tack to bar tack )
Q	Pocket position from the side seam
R	Back pocket position from the centre back seam
S	Length of back pocket at opening

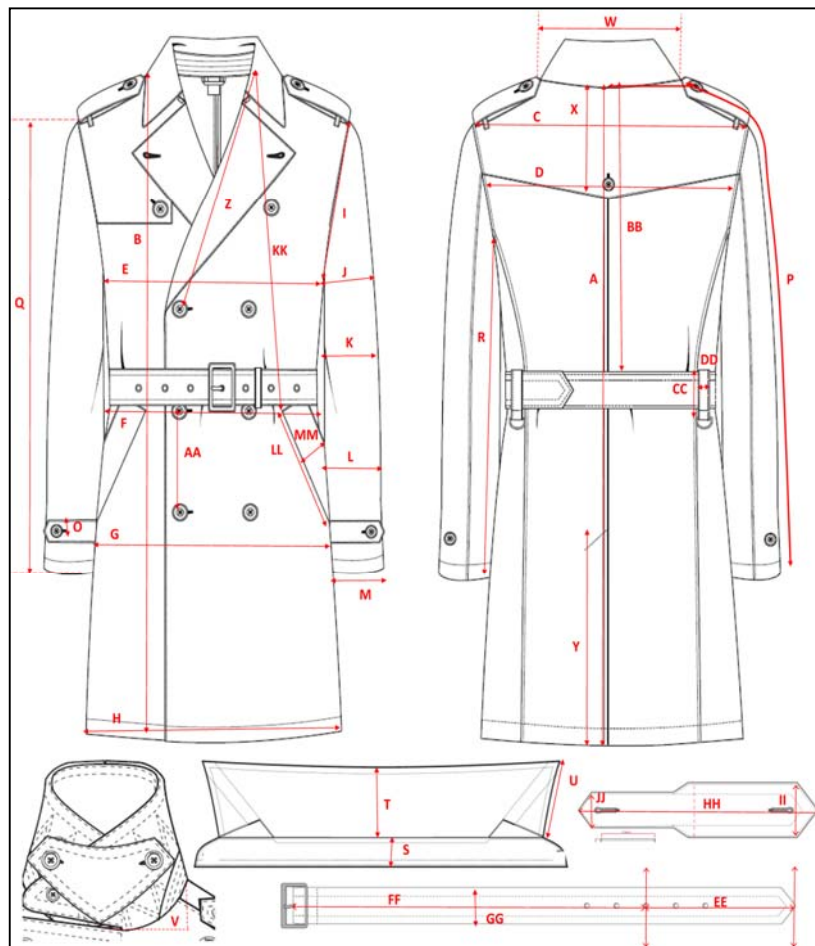
## How to measure guide- Shirts



A	Centre back length
B	Across front ( 18cm down from the HSP )
C	Chest ( 2.5cm below armhole )
D	Waist width ( 43cm down from the HSP )
E	Hem width at lower edge
F	Armhole- straight
G	Bicep ( at armhole, 90 degress angle to outside sleeve )
H	Elbow width ( 18cm down from the underarm )
I	Forearm ( 17cm up form the cuff hem )
J	Cuff width ( at cuff opening )
K	Cuff depth
L	Cuff width ( circumference, centre button to centre buttonhole )
M	Sleeve length ( CB neck to cuff )
N	Sleeve length ( head to cuff )
O	Underarm ( seam to cuff hem )
P	Centre front placket width
Q	Sleeve placket width
R	Sleeve placket length ( cuff hem to placket point )
S	Placket length at CF ( from neck seam )
T	Neck circumference ( centre button to centre cuttonhole )

U	Front neck drop ( from HSP )
V	Back neck drop ( from HSP )
W	Back neck width ( HSP to HSP )
X	CF collar stand depth
Y	CB collar stand depth
Z	CB collar depth
AA	Collar point
BB	Collar spread ( when worn )
CC	Tie space ( when worn )
DD	Across shoulders
EE	Across back ( 15cm down from the HSP )
FF	1st button position from the collar seam
GG	Button spacing
HH	CB yoke depth ( from neck seam at centre back )
II	Pocket position from HSP
JJ	Pocket width at opening
KK	Pocket depth
LL	First sleeve please from sleeve placket

### How to measure guide- Macs



A	Centre back length
B	Front length HSP to hem
C	Across shoulders
D	Across back ( 15cm down from the HSP )
E	Chest ( 2.5cm below armhole, garment closed )
F	Waist width ( at narrowest point, garment closed )
G	Hip ( 36cm down from armhole, garment closed )
H	Hem width at lower edge ( garment closed )
I	Armhole- straight
J	Bicep ( at armhole, 90 degrees angle to outside sleeve )
K	Elbow width ( 18cm down from armpit )
L	Forearm width ( 17cm up from cuff )
M	Cuff width
N	Cuff depth
O	Cuff strap width
P	Sleeve length ( CB neck to cuff )
Q	Sleeve length ( sleeve head to cuff )
R	Underarm - along seam to cuff
S	Stand height at the centre back
T	Collar height at the centre back
U	Collar point
V	Front neck drop from HSP
W	Back neck width- HSP to HSP along neckline
X	Yoke depth from centre back neck
Y	Vent length
Z	1st button position from the HSP
AA	Button spacing
BB	Belt position from the centre back
CC	Belt loop width
DD	Belt loop length
EE	Belt length ( middle hole to point )
FF	Belt length ( middle hole)
GG	Belt width
HH	Epaulette length to point
II	Epaulette width ( at top)
JJ	Epaulette width ( at base )
KK	Pocket position from HSP
LL	Pocket length
MM	Pocket width