

# NATURAL COLLECTION

*Where sleep comes naturally*



JOHN LEWIS  
& PARTNERS



## Celebrating bedtime with the Natural collection

---

The wonderful experience of good sleep brings life affirming benefits. Good sleep boosts health and well-being, restores energy and uplifts mind and body. It is the ultimate 'me time'.

When we prioritise sleep, positive results flow into our daily lives and so the choice to invest positively in the quality of our sleep is significantly important.

The mattress we choose to rest on influences much of our sleep experience. There is a way to avoid feeling restless and uncomfortable through the small hours. In choosing a natural mattress that responds to our individual needs, the journey to blissful sleep is so much smoother, comfortable, cosy and well supported.

We invite you to discover our outstanding range of quality natural mattresses, each designed and hand crafted to support you perfectly on the journey to deeply relaxing, nourishing sleep.



## Welcome to the Natural collection

---

Because we recognise the contribution that a high quality mattress makes to sound sleep, and the well being of mind and body, we launched the Natural collection. This ground-breaking range features sumptuous, sustainable, natural and eco friendly mattress fillings enhanced by layers of award winning pocket springs.

The combination of this leading technology and expertly selected blends of natural fibres delivers outstanding comfort and support. The innovative pocket springs ensure correct spinal alignment to reduce restlessness, aches and pains while the natural fillings enhance temperature regulation, wicking away moisture, to promote healthy, sound and nourishing sleep.

Among our most significant fillings is hemp, which features in all Natural collection mattresses. Hemp is a star performer because it is not only more resilient, durable and absorbent than cotton, it is also grown on a family-run farm in Yorkshire without the use of pesticides and herbicides, making it an invaluable, carbon negative raw material.



## About the farm

---

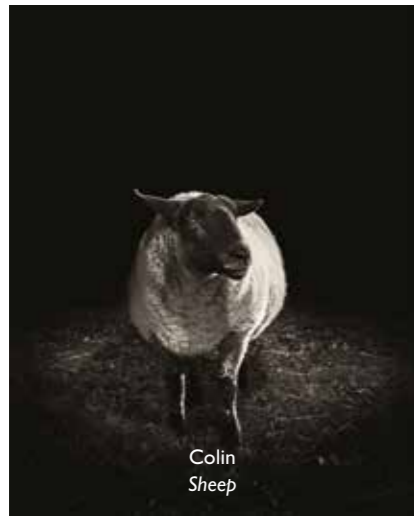
The story of our expertly crafted mattresses begins at a 300 acre farm. Grazing on pasture free from pesticides and fertilizer, the flock includes Zwartbles, Suffolk, Texel and Wensleydale sheep, Alpaca and Angora goats.

At the Farm, hemp and flax are grown, and sheep are reared for wool, providing you with a high quality, natural mattress.

This also allows us to use very locally sourced fillings, whilst supporting our mission to reduce our carbon foot print. The farm is just twenty miles from the factory, where a highly skilled team expertly craft each mattress.

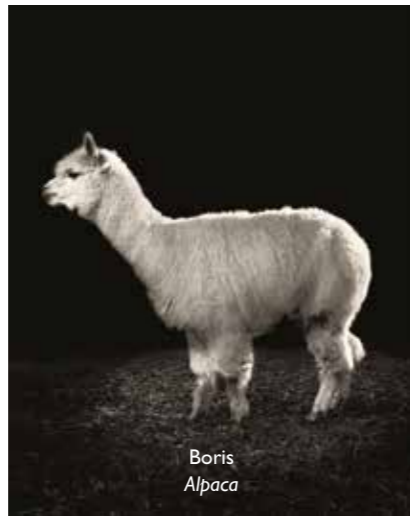
# Meet the makers

Our Natural collection beds are hand built by a team of highly skilled craftspeople working with a combination of traditional methods, innovative technology and blends of the finest natural fibres. Allow us to introduce some of the members of our great team of experts.



Colin  
Sheep

Soft, springy and naturally supportive, the natural wicking properties of wool help to regulate body temperature. Wool is also antibacterial and inherently fire retardant. Little wonder then that wool is a star performer in our Natural collection mattresses!



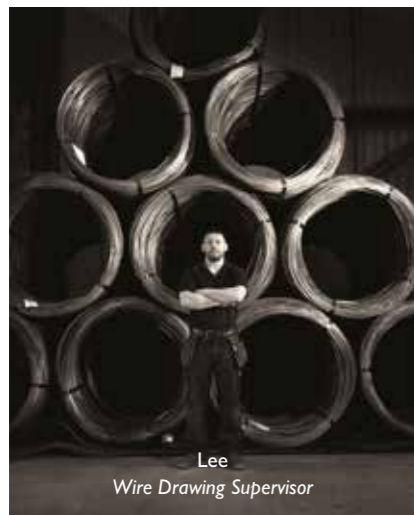
Boris  
Alpaca

Similar to sheep's wool, Alpaca wool is soft and durable with excellent moisture wicking properties yet it is warmer and, without lanolin, Alpaca wool is also hypoallergenic.



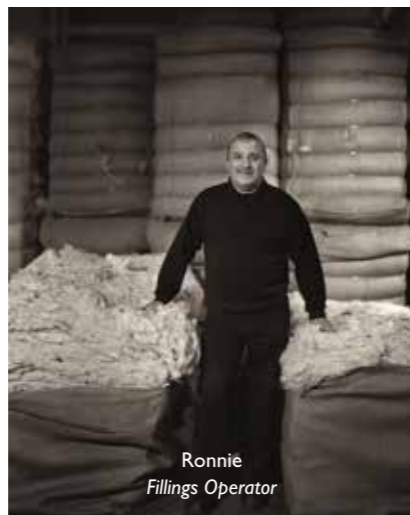
Bea  
Angora goat

Angora goats produce mohair, which is smoother and softer than sheep's wool. The fine silky texture of mohair gives the fibre a luxurious feel.



Lee  
Wire Drawing Supervisor

As with so many things, the devil is in the detail! The award winning technology of the British Steel springs made in-house, precisely stretched into the finest wire, is one of the most significant details of our outstanding mattresses.



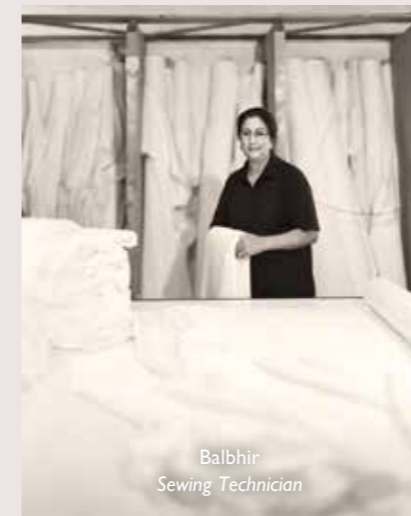
Ronnie  
Fillings Operator

Creating the perfect blend of high quality natural fibres to create sumptuous filling pads for expert layering in our range of mattresses is another important comfort factor.



David  
Product Coach

Because we believe in customer service excellence, our in store Partners receive training and practical insight about the production of our Natural collection mattresses, enabling them to expertly guide every customer to the mattress that perfectly matches their requirements.



Balbir  
Sewing Technician

Traditional strong and sturdy flag stitches bond handles to the body of the mattress to facilitate moving, rotating and turning through the seasons.



Gary  
Side Stitcher

The art of side stitching requires years of training, however the care and dedication to the craft means that an expertly side stitched mattress offers maximum support across the entire sleeping surface.



Mikey  
Tape Edger

The tape edger delivers the important finishing touch in the building of our mattresses; with great care and expertise, and with the mattress at a tricky angle, the edge of the mattress is expertly finished to completely bind the layers within.



Karen and Tony  
Headboard Upholsterers

Our headboards are beautifully handcrafted. Each upholsterer is expertly skilled to handle the fabric and create intricate finishes across the range.



John Paul  
Quality Control Manager

Testing, testing, testing! In our laboratory, every mattress in our range must rise to the challenge of rigorous assessments for structure and comfort. Both springs and the fillings are put through their paces, to ensure they truly meet the highest standards we set for all of our mattresses.



Katherine  
Beds and Bedroom Furniture Buyer

In partnership with the most innovative suppliers, the buyer has developed a range of mattresses that deliver market leading quality for price and unrivalled level of comfort, for however you sleep.

## Chemical free fire retardant fabric

Traditionally, manufactures have added chemicals to fabric making it fire retardant to ensure it complies with regulations. In our quest to be as natural as possible, we are very excited to be able to bring you a collection of 100% fire retardant chemical-free mattresses. Woven in Leeds, the fabric on every Natural collection mattress is made from materials that boast naturally fire retardant properties and finished using steam for a natural finish unlike any other. This means it requires no additional fire retardant chemical treatments. It's a healthier choice for you and your whole family.

## Unique pocket spring systems

World-leading spring technology made in Yorkshire delivers premium comfort and support, thanks to considerable research and investment in the manufacture and development of innovative spring systems, made from British Steel.

High Density body contouring pocket springs and the Revolution pocket spring system were developed to deliver targeted, breathable support exactly where it is needed. This avoids pressure points, to allow for a deep and restful sleep.

Thanks to layers of fine, dense springs built into our mattresses, the heavier and lighter areas of the body are fully supported and able to relax in comfort during the body's journey through sleep.



## Groundbreaking spring technology

The more springs in your mattress, the better the comfort and support.. World-leading spring technology is used throughout the Natural collection to deliver unrivalled comfort and support. And with some of the highest density of springs found in any mattress in the world, you can rest assured that you're sleeping on the best.

### High Density pocket springs

These small pocket springs are produced in a blanket sheet format with up to 4,000 individual springs in each layer. They adapt to your body as you sleep, relieving any pressure; perfect if you sometimes wake up with aches and pains. These springs are closest to the natural filling layers and the perforated fabric pushes air through the mattress allowing it to breathe.

### Body contouring pocket springs

With 2,500 - 4,000 springs in each layer of High Density pocket springs, these small springs perfectly contour to the body. They adapt to the movement of the body through sleep, allowing for an undisturbed sleep due to restlessness and movement.

### Revolution® double the support

Revolution® is a world first. It combines two springs into one as a larger spring houses a smaller one inside. Providing double the support, the large spring provides comfort for the lighter parts of your body, while the small spring engages with the heavier parts including your hips and shoulders. This two action spring is supportive to the areas that need it most.

The Revolution® coil is encased in a pocket that encourages air to flow through the mattress when compressed. This keeps the fillings clean, healthy and dry whilst providing a comfortable, highly supportive sleeping environment.



- 1 High Density 4K pocket springs
- 2 High Density springs
- 3 Revolution® spring system
- 4 Revolution® outer spring
- 5 Revolution® inner spring

# Introducing the perfect sleeping posture

While we spend up to a third of our lives in bed, many of us do not get the quality of sleep required to function at our best every day.

Achieving good body posture day and night contributes to our well being.

Poor sleeping posture on an unsuitable mattress creates an incorrect spinal alignment, leading to painful back and neck problems, which impacts the quality of sleep.

Choosing the correct mattress tension for the body's needs is fundamental to improving the quality of sleep. Whether medium or firm, the correct mattress tension will improve your sleep posture and quality of sleep.

Correct sleeping posture, with straight, neutral spinal alignment is easily achieved with the expert advice of our specialist Partners who will guide you to the mattress tension that best meets your needs.



Correct posture

Bad posture



### Too soft

When the mattress is too soft, the spine is out of alignment and bows down to create pressure on the hips and around the lower back.



### Too firm

When the mattress is too firm, the spine bows upwards to create pressure around the shoulders, knees and lower back. You can check this by lying on your back on the mattress. If you have a gap, or you can easily slide your hand underneath your lower back, the mattress is too firm.



### Correct posture

Guided by our Partners, a mattress with the correct tension for your needs, in conjunction with the correct pillow, allows the spine to rest in neutral; the ideal sleeping posture. Heavier parts of the body, the knees, the hips and shoulders, receive required support and sleep is blissfully peaceful without being disturbed. All mattresses in our range are available in medium and firm tension and our specialist Partners will guide you to those that best meet your needs.

# Discovering the Natural collection mattress that feels just right for you

Our Natural collection range of mattresses are designed to offer the best quality mattress to meet your individual needs. The amount of support a mattress offers affects significantly whether or not we feel comfortable, and in turn, that influences whether or not we are able to rest, and relax our mind and body, to enjoy a great sleep.

Think about how you sleep, whether on your side, back or front. For example, if you sleep on your side the mattress needs to allow your shoulder to sink in, whilst supporting your waist, keeping your spine straight. Many people require a softer bed than they may first imagine.

To address that individual experience, our Natural collection range of mattresses offers three levels of support:

## Comfort Support

Just the right balance of support for however you sleep; not too soft, not too firm.

## Ortho Support

A reassuringly dense support for those who prefer a firmer feel.

## Luxury Support

A cloud-soft feel combined with gentle support, for a truly sumptuous feel.

To find what feels right for you, come in store and discover the three levels of support in our Natural collection mattress range.

When you have experienced the mattresses and identified which of the three choices, Comfort Support, Ortho Support or Luxury Support, suits you best, the next step is to choose the tension you require, either medium tension or firm tension.

If you and your partner require different levels of support, mattresses can be made using two different spring tensions.

Knowing which support level and which tension suits you best, the next step is to choose from a range of three different filling types within each of the categories, Comfort Support, Ortho Support and Luxury Support.

For the range of Comfort Support natural mattress fillings, please turn to Page 14 to discover

Hemp 4,000  
Herdwick wool 8,000  
Angora 14,000

For the range of Ortho Support natural mattress fillings, please turn to page 18 to discover

Leckford linen 5,000  
Swaledale wool 9,000  
Silk 17,000

For the range of Luxury Support natural mattress fillings, please turn to page 22 to discover

Egyptian cotton 7,500  
Wensleydale wool 12,000  
Cashmere 21,000



## Introducing Comfort Support

---

Just the right balance of support for however you sleep;  
not too soft, not too firm.

The comfortable combination of the award winning Revolution®  
pocket springs and High Density springs ensures full body  
support. This combined with natural fillings such as hemp,  
Herdwick wool and Angora wool creates a comfortable and  
sumptuous sleeping environment. It's not too soft, yet it's not  
too firm, it's just the right level of comfort for everybody.



## Hemp 4,000

---

Our Hemp 4,000 mattress offers a carefully layered combination of natural fillings and pocket springs. With soft cotton upholstery and 4,000 supportive springs in a king size mattress, the strong and resilient hemp filling creates a breathable mattress. This is a one-sided mattress, which does not need to be turned. Rotate head to toe to prevent settlement and increase longevity.

Interior mattress structure shown on page 26.



No turn, one sided mattress,  
rotate with the seasons



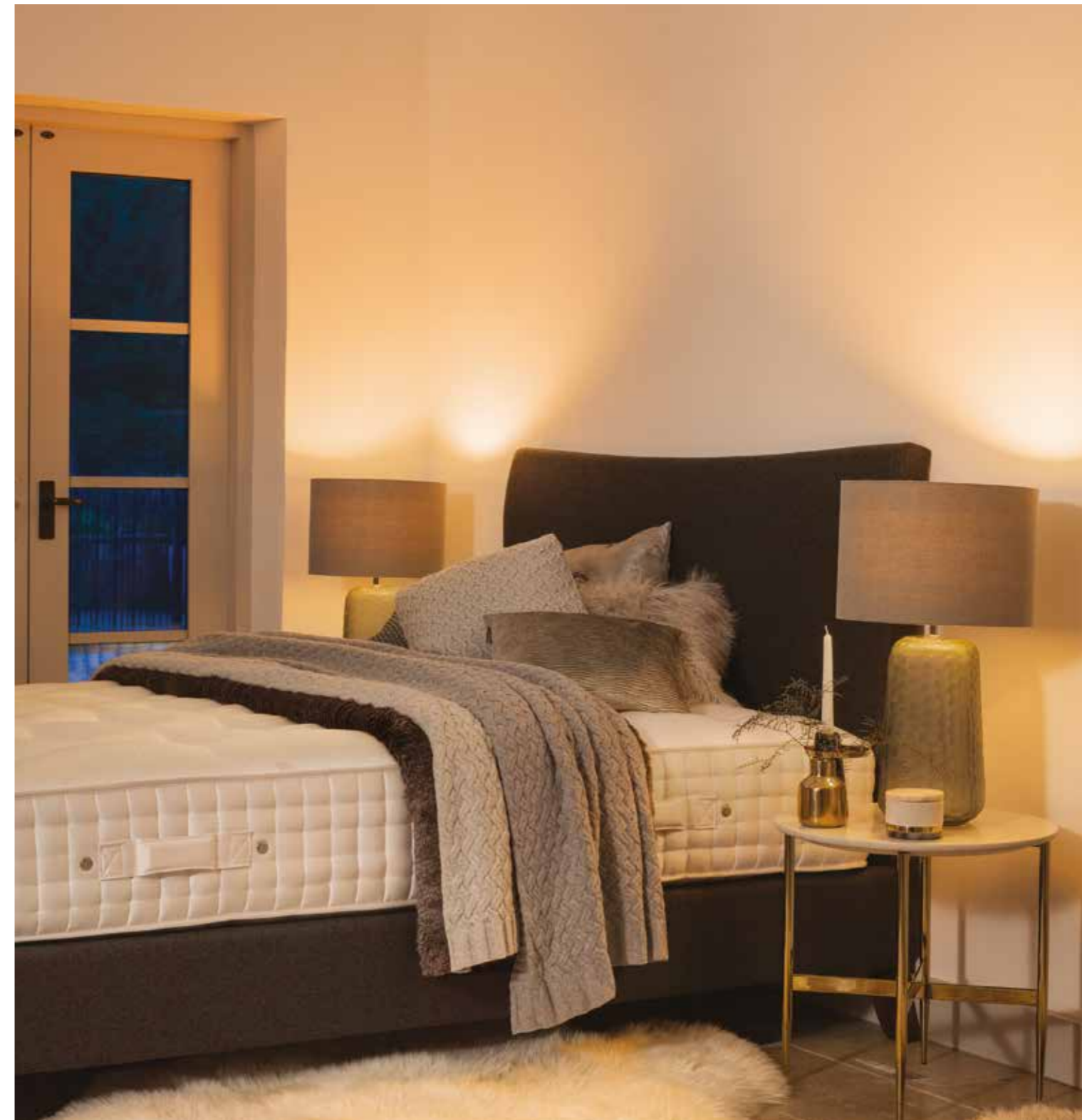
## Herdwick wool 8,000

Our Herdwick wool 8,000 mattress features soft cotton upholstery over layers of natural fillings and quality, springy Herdwick wool from local farms. Herdwick wool delivers enhanced comfort and temperature regulation. This mattress needs turning and rotating with the seasons to prevent settlement and increase longevity.

Interior mattress structure shown on page 26.



Turn and rotate with the seasons



## Angora 14,000

The Angora 14,000 mattress is enhanced with the softest Angora goat wool, more durable and finer than sheep wool. This sumptuous extra layer provides luxurious insulation and natural body temperature regulation over 14,000 pocket springs in the king size mattress. This mattress needs turning and rotating with the seasons to prevent settlement and increase longevity.

Interior mattress structure shown on page 26.



Turn and rotate with the seasons

## Introducing Ortho Support

---

A reassuringly dense support for those who prefer a firmer feel.

The Revolution spring system in the Ortho Support mattresses have a thicker wire for a firmer feel, coupled with an inner spring for double the support. High Density springs contour to the body ensuring every part of the body is perfectly supported.

Natural fillings including linen, Swaledale wool and silk ensure healthy body temperature regulation and combined with springs, create beautiful mattresses for those who suit the support of a more substantial mattress.



## Leckford linen 5,000

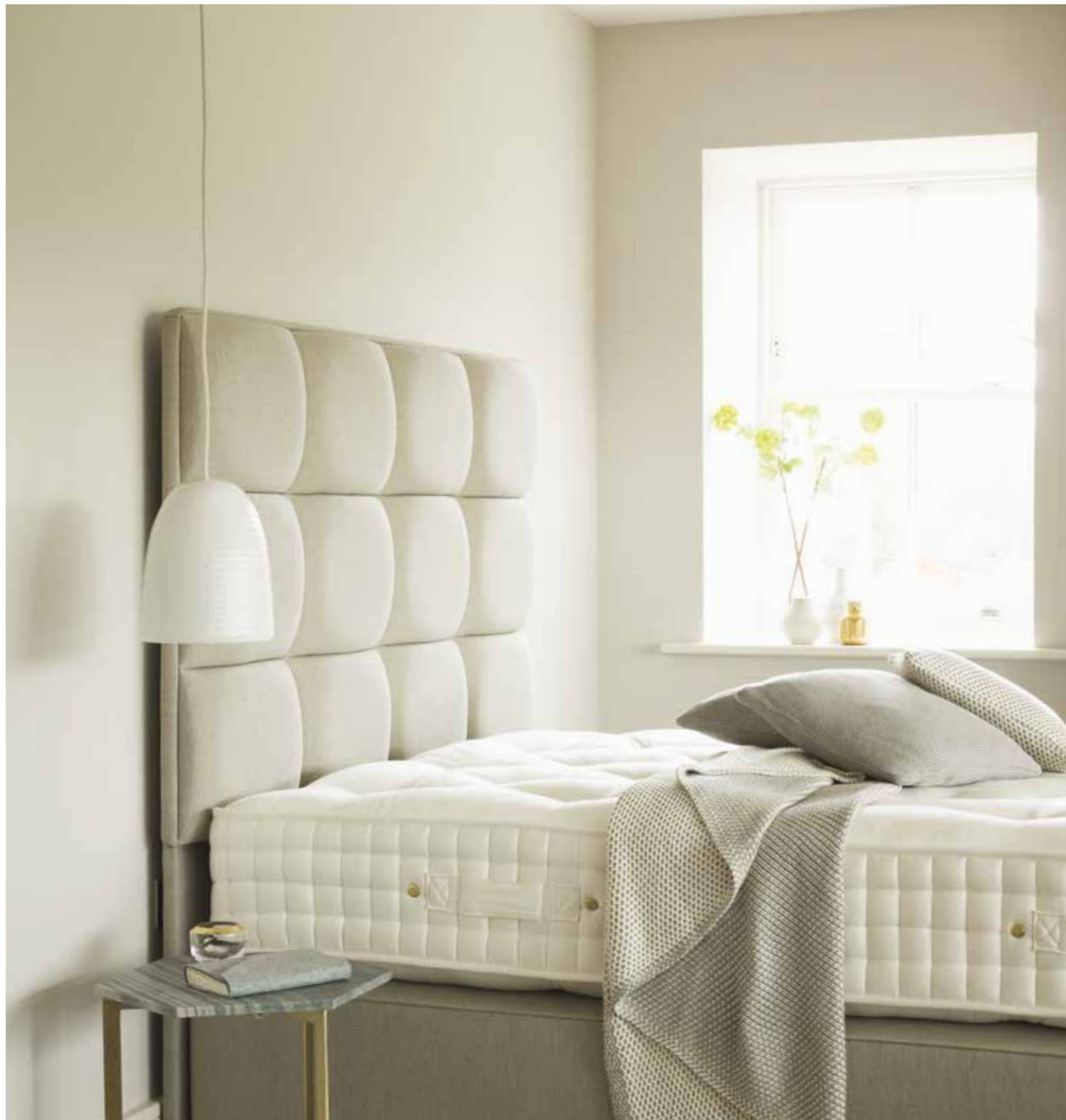
---

With 5,000 springs in a king size mattress, the Leckford linen model offers a firmer feel with layers of linen to wick away moisture and ensure a cool comfortable sleep. The blend of linen with other natural fillings makes this a fresh, dry, resilient mattress with soft cotton upholstery. This is a one-sided mattress, which does not need to be turned. Rotate head to toe to prevent settlement and increase longevity.

Interior mattress structure shown on page 27.



No turn, one sided mattress,  
rotate with the seasons



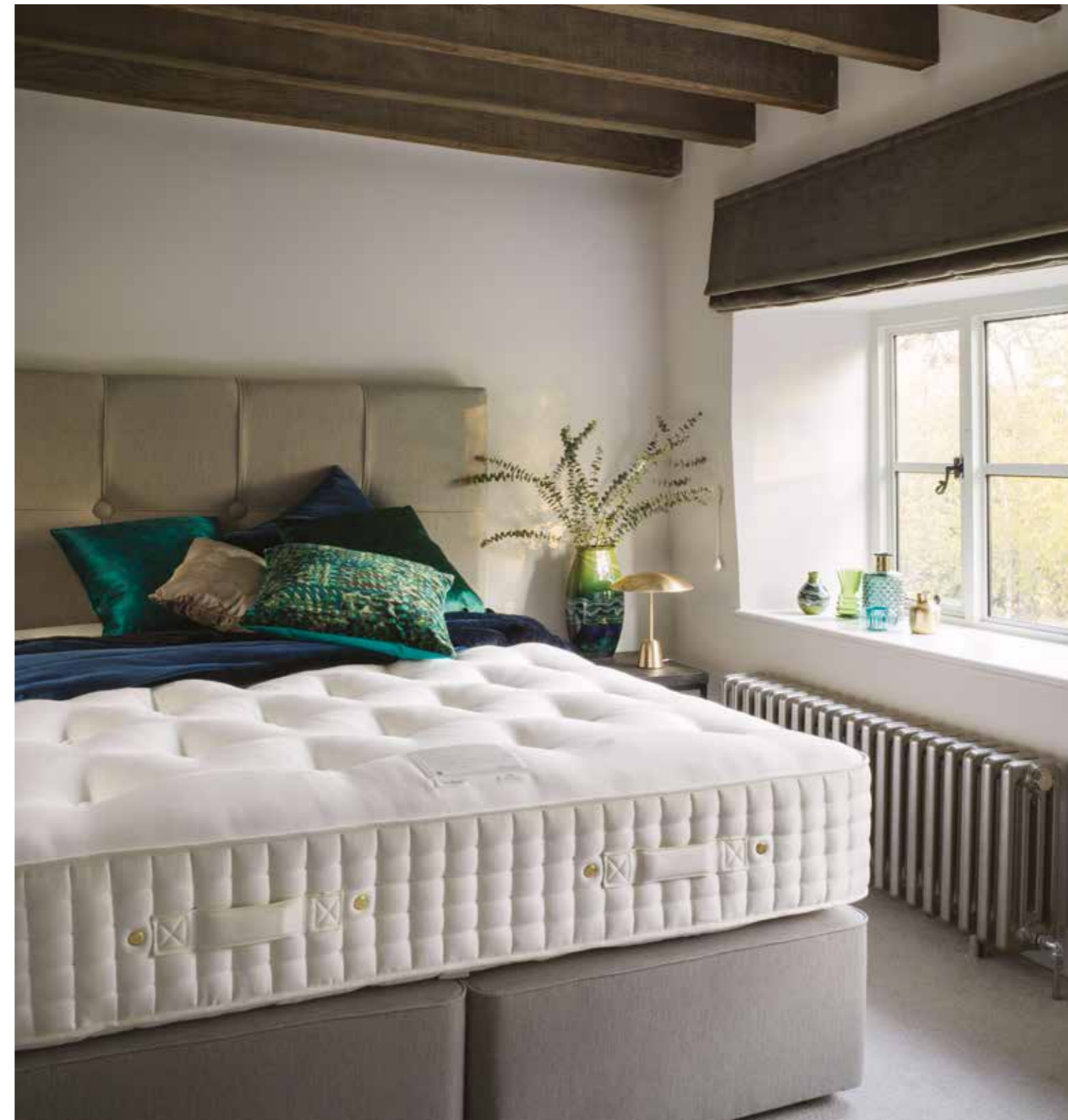
## Swaledale wool 9,000

Hardy Swaledale sheep from Yorkshire provide wool that is durable and resilient. It is expertly layered with other natural fillings in the Swaledale wool 9,000 mattress. The king size model features 9,000 High Density and Revolution® springs. This mattress needs turning and rotating with the seasons to prevent settlement and increase longevity.

Interior mattress structure shown on page 27.



Turn and rotate with the seasons



## Silk 17,000

Smooth silk fibres are luxurious, hypoallergenic, moisture managing and temperature regulating. Their addition to the Silk 17,000 mattress enhances the sumptuous layers of natural fillings over High Density and Revolution® pocket springs, which have an additional core spring for increased support.

This is a richly comfortable and supportive mattress. This mattress needs turning and rotating with the seasons to prevent settlement and increase longevity.

Interior mattress structure shown on page 27.



Turn and rotate with the seasons

## Introducing Luxury Support

---

A cloud-soft feel combined with gentle support,  
for a truly sumptuous feel.

Cosy layers of rich natural fillings cradle the body during sleep and regulate body temperature wonderfully. Award winning spring technology and the addition of the finest Egyptian cotton, layers of soft Wensleydale wool and cosy cashmere creates a luxurious range of deeply supportive and comfortable mattresses. Our dreamy Luxury Support range of mattresses offer a wonderful sleep experience; like sleeping on a cloud.



## Egyptian cotton 7,500

---

Supported by an award winning spring system, this luxurious mattress with 7,500 springs in a king size model delivers excellent support and natural body temperature regulation. Soft Egyptian cotton works in perfect harmony with layers of other natural fillings to provide a cool, fresh sleeping environment.

This is a one-sided mattress, which does not need to be turned. Rotate head to toe to prevent settlement and increase longevity.

Interior mattress structure shown on page 28.



No turn, one sided mattress,  
rotate with the seasons



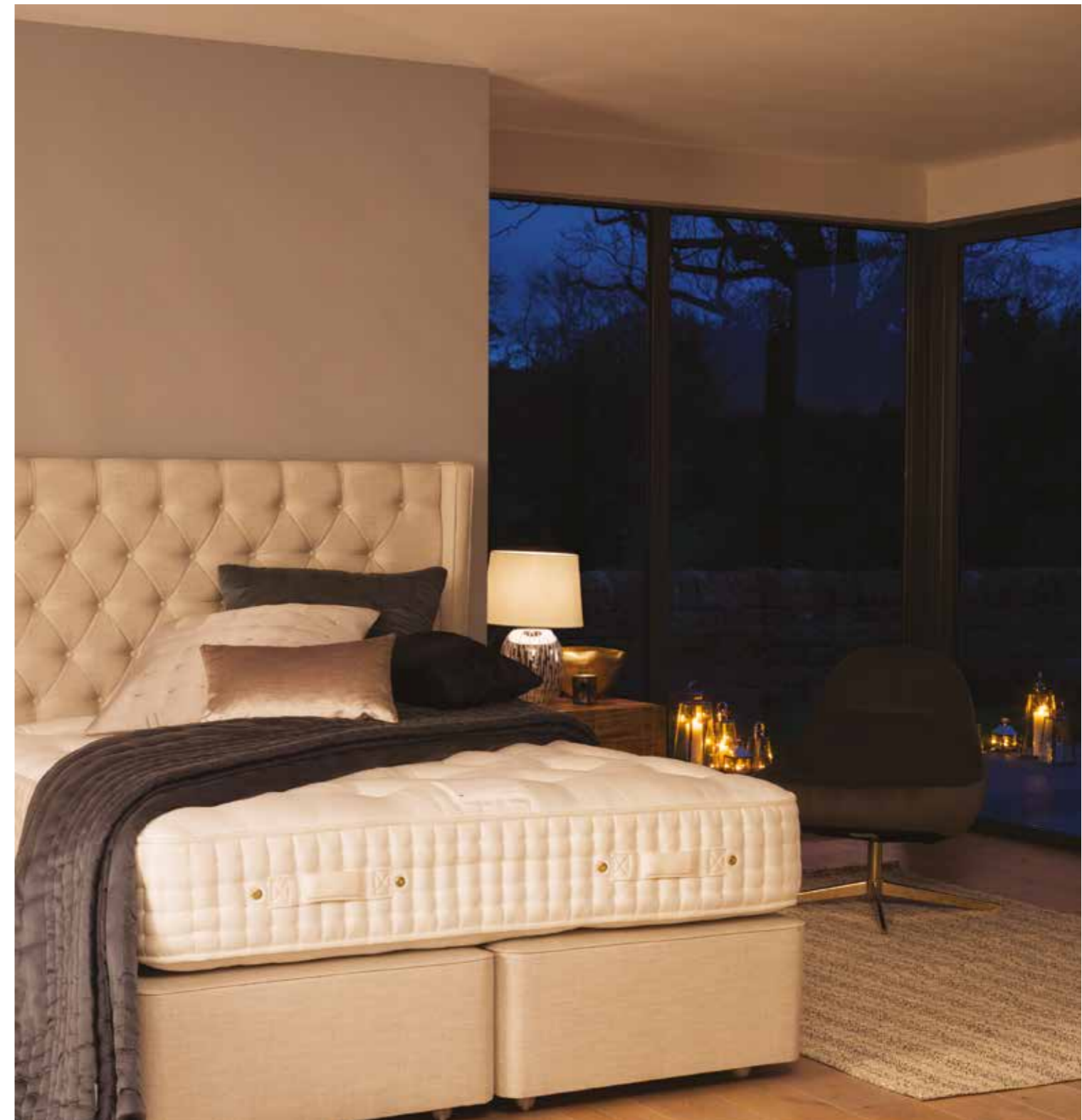
## Wensleydale wool 12,000

With 12,000 fantastically supportive springs in the king size model, our luxury comfort Wensleydale wool mattress is a thoroughly relaxing way to retire to bed. Cosy layers of soft, silky and durable Wensleydale wool, some of which is from the farm, works with other natural fillings to achieve excellent body temperature regulation and pure indulgence. This mattress needs turning and rotating with the seasons to prevent settlement and increase longevity.

Interior mattress structure shown on page 28.



Turn and rotate with the seasons



## Cashmere 21,000

The Cashmere 21,000 is sheer luxury. With a supportive system of 21,000 springs in the king size model you drift off in pure comfort. Beautiful cashmere is finer, stronger, lighter and softer than sheep's wool. It is also around three times more insulating. Combining this deluxe cashmere with layers of natural fillings creates a deeply comfortable and richly rewarding sleep experience. This mattress needs turning and rotating with the seasons to prevent settlement and increase longevity.

Interior mattress structure shown on page 28.



Turn and rotate with the seasons

# Comfort Support product matrix

## Our bespoke service

We want you to be entirely satisfied with your new mattress. Please read this important information to help inform your purchase. Our specialist Partners will be happy to advise you further.

With regard to delivery, please note that some mattresses in our hand made range are available in 7 working days in medium tension while other mattresses, including bespoke, firm tension and a combination of tensions, are made to order for delivery within 6-8 weeks (unless otherwise stated).

Because all of our mattresses, divans and bedsteads are hand built to order, our bespoke service means we are able to fulfil requests for unusual sizes. All bespoke mattresses are available in medium and firm tensions, or a combination of both meaning you and your partner can select the tension right for you.

# Ortho Support product matrix

## Zipped mattresses

Should you require a bed with two different tensions, medium and firm, or you would like two single mattresses we offer a zipped mattress for king and super king size beds. Zipped mattresses are easier to turn, and easier to move from room to room, should access be a problem.

## Caring for your new bed

As you and your generously filled mattress get to know each other, body impressions are made across the surface of the mattress. This process of getting acquainted is entirely natural and improved by rotating, or turning. For the first three months, this will need to be done once a month. It is then recommended that your mattress should be rotated or turned with the seasons (depending on whether it is a no turn or turn mattress), to prevent settlement.

### Hemp 4,000

Spring count (150cm bed) 4,000



- CROSS SECTION
1. Wool blend
  2. Natural cotton blend
  3. Hemp and flax blend
  4. 3,000 High Density pocket springs
  5. Revolution® pocket springs
  6. Eco white fibre blend

Side stitching rows | 2

Air vents | 3

Handles | 4

Tufts | Wool

Turning requirements | No turn, one sided mattress, rotate with the seasons



Hemp 4,000 single, small double, double and king mattress sizes in medium tension are available within 7 working days.

### Herdwick wool 8,000

Spring count (150cm bed) 8,000



- CROSS SECTION
1. Wool blend
  2. Herdwick wool and cotton blend
  3. Natural cotton blend
  4. Hemp and flax blend
  5. High Density 4K pocket springs
  6. Revolution® pocket springs
  7. High Density 4K pocket springs
  8. Hemp and flax blend
  9. Herdwick wool and cotton blend
  10. Natural cotton blend
  11. Wool blend

Side stitching rows | 3

Air vents | 16

Handles | 8

Tufts | Wool

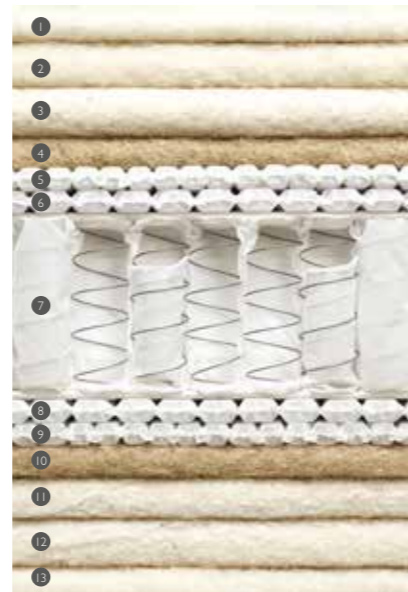
Turning requirements | Turn and rotate with the seasons



Herdwick wool 8,000 double, king and super king zip & link mattress sizes in medium tension are available within 7 working days.

### Angora 14,000

Spring count (150cm bed) 14,000



- CROSS SECTION
1. Wool blend
  2. Angora and wool blend
  3. Natural cotton blend
  4. Hemp and flax blend
  5. High Density 4K pocket springs
  6. 2,500 High Density pocket springs
  7. Revolution® pocket springs
  8. 2,500 High Density pocket springs
  9. High Density 4K pocket springs
  10. Hemp and flax blend
  11. Angora and wool blend
  12. Natural cotton blend
  13. Wool blend

Side stitching rows | 4

Air vents | 16

Handles | 8

Tufts | Wool

Turning requirements | Turn and rotate with the seasons



Angora 14,000 king and super king zip & link mattress sizes in medium tension are available within 7 working days.

### Leckford linen 5,000

Spring count (150cm bed) 5,000



- CROSS SECTION
1. Wool blend
  2. Natural cotton blend
  3. Hemp and flax blend
  4. High Density 4K pocket springs
  5. Revolution® pocket springs
  6. Eco white fibre blend
  7. Eco white fibre blend

Side stitching rows | 2

Air vents | 3

Handles | 4

Tufts | Wool

Turning requirements | No turn, one sided mattress, rotate with the seasons



Leckford linen 5,000 single, double and king mattress sizes in medium tension are available within 7 working days.

### Swaledale wool 9,000

Spring count (150cm bed) 9,000



- CROSS SECTION
1. Wool blend
  2. Swaledale wool and cotton blend
  3. Natural cotton blend
  4. Hemp and flax blend
  5. High Density 4K pocket springs
  6. Revolution® pocket springs
  7. High Density 4K pocket springs
  8. Hemp and flax blend
  9. Swaledale wool and cotton blend
  10. Natural cotton blend
  11. Wool blend

Side stitching rows | 3

Air vents | 16

Handles | 8

Tufts | Wool

Turning requirements | Turn and rotate with the seasons



Swaledale wool 9,000 double, king and super king zip & link mattress sizes in medium tension are available within 7 working days.

### Silk 17,000

Spring count (150cm bed) 17,000



- CROSS SECTION
1. Wool blend
  2. Silk and wool blend
  3. Natural cotton blend
  4. Hemp and flax blend
  5. High Density 4K pocket springs
  6. High Density 4K pocket springs
  7. Revolution® pocket springs
  8. High Density 4K pocket springs
  9. High Density 4K pocket springs
  10. Hemp and flax blend
  11. Silk and cotton blend
  12. Natural cotton blend
  13. Wool blend

Side stitching rows | 4

Air vents | 16

Handles | 8

Tufts | Wool

Turning requirements | Turn and rotate with the seasons



Silk 17,000 king size mattress in medium tension is available within 7 working days.

# Luxury Support product matrix

## No turn mattresses

Changing the position of your one sided mattress refreshes the natural fillings and sleeping surface. Some mattresses in our Natural collection only need rotating.

If you choose one of our no turn mattresses, we advise it is spun twice a year. Rotate the mattress from head to foot.

## Turn and rotate mattresses

Some mattresses in our range benefit from two sleeping surfaces which extends the longevity of your mattress. With natural fillings on both sides, they have been designed to utilise the properties of the individual fillings; one side keeping you warm in the winter and the other keeping you cool in the summer. Turn your mattress over with the seasons, a great way to remember this is to do it when the clocks change.

### Egyptian cotton 7,500

Spring count (150cm bed) 7,500



- CROSS SECTION
1. Wool blend
  2. Egyptian cotton blend
  3. Hemp and flax blend
  4. High Density 4K pocket springs
  5. 2,500 High Density pocket springs
  6. Revolution® pocket springs
  7. Eco white fibre blend
  8. Eco white fibre blend

Side stitching rows	2
Air vents	3
Handles	4
Tufts	Wool

Turning requirements | No turn, one sided mattress, rotate with the seasons



Egyptian cotton 7,500 single, double and king mattress sizes in medium tension are available within 7 working days.

### Wensleydale wool 12,000

Spring count (150cm bed) 12,000



- CROSS SECTION
1. Wensleydale wool blend
  2. Wool blend
  3. Hemp and flax blend
  4. High Density 4K pocket springs
  5. 2,000 High Density pocket springs
  6. Revolution® pocket springs
  7. 2,000 High Density pocket springs
  8. High Density 4K pocket springs
  9. Hemp and flax blend
  10. Natural cotton blend
  11. Wensleydale wool blend

Side stitching rows	3
Air vents	16
Handles	8
Tufts	Wool

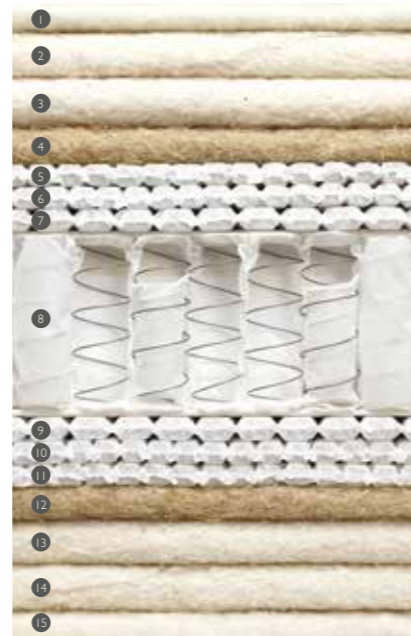
Turning requirements | Turn and rotate with the seasons



Wensleydale wool 12,000 double, king and super king zip & link mattress sizes in medium tension are available within 7 working days.

### Cashmere 21,000

Spring count (150cm bed) 21,000



- CROSS SECTION
1. Wool blend
  2. Cashmere, silk and wool blend
  3. Natural cotton blend
  4. Hemp and flax blend
  5. High Density 4K pocket springs
  6. High Density 4K pocket springs
  7. 2,000 High Density pocket springs
  8. Revolution® pocket springs
  9. 2,000 High Density pocket springs
  10. High Density 4K pocket springs
  11. High Density 4K pocket springs
  12. Hemp and flax blend
  13. Cashmere, silk and cotton blend
  14. Natural cotton blend
  15. Wool blend

Side stitching rows	4
Air vents	16
Handles	8
Tufts	Wool

Turning requirements | Turn and rotate with the seasons



Cashmere 21,000 king size mattress in medium tension is available within 7 working days.

Ultimate  
collection

For those seeking something extra special, the John Lewis Ultimate collection offers an exclusive range of supremely luxurious, hand crafted mattresses using age old traditional bed making methods.

With unrivalled spring counts the Ultimate collection utilises cutting edge spring technology to create perfect support for the body, allowing you to awaken feeling refreshed and ready for the day ahead.

The Ultimate collection range, of just the three very best and most exclusive mattresses, features 100% sustainably sourced natural fillings of the highest quality, including fine tree silk, Alpaca wool and soft pashmina.

For more information about the Ultimate collection ask a specialist Partner in store.





## Standard and Luxury True Edge divan bases

We advise the best way to enjoy your new mattress is to combine it with a True Edge divan base.

Side stitching reinforces all of our mattresses and, when combined with a True Edge divan base, support across the sleeping surface is maximised.

The difference is due to a multitude of encased pocket springs across the surface of the True Edge divan, serving to provide support while eliminating the feeling of too much give as you get in and out of bed.

Our Standard True Edge model features 2,500 individual pocket springs while the Luxury True Edge model has 3,500 pocket springs. Both models are available in all standard and bespoke sizes.

See the beautiful range of fabric choices for the Standard and Luxury True Edge divan bases on page 33.



## Backlift



For added support while reading or watching television in bed, choose our optional backlift mechanism with remote control to adjust the mattress position.

Backlift mechanisms are available with single mechanisms and dual mechanisms for each side of the bed. Dual backlifts are available for zip and link mattress options only.

## Feet and legs



Divan bases are supplied with chrome Shepherd castors while Luxury True Edge divans are supplied with inset castors. Other castor options are available from our range including brake castors to ensure your bed stays safely in position on a wooden floor. Our specialist Partners will advise on the best solution for your needs.

## Storage solutions

A further option in both Standard and Luxury True Edge divan bases is a wide choice of useful storage drawers. All divan bases with storage are made to order within 6-8 weeks, unless stated otherwise. Using maple wood ply, veneers and strong dovetail joints, divan drawers are available in the following configurations:



# Headboards

Our range of high quality headboards have been designed to add the finishing touch to your new bed. Available in full height, or on struts for easy access.

As we believe in sustainable manufacturing, the wood used to make the sturdy frames is from FSC® certified forests.



Bedford	Gloucester	Harlow	Lancaster	Richmond	Tatton
FULL HEIGHT OPTION (FULL HEIGHT FROM FLOOR)					
127cm	152cm	143cm	137cm	127cm	141cm
STRUTTED OPTION (HEIGHT OF HEADBOARD NOT INCLUDING STRUTS)					
55cm	N/A	88cm	N/A	87cm	N/A
DEPTH					
10cm	8cm	16cm	10cm	8cm	11cm
SIZES PROVIDED ARE FOR A 150CM KING SIZE BED					

All headboards are made to order within 6-8 weeks unless stated otherwise.



# Fabrics

This illustration represents the extensive range of beautiful upholstery fabric options available for our True Edge divan bases, bedsteads and headboards.

You can view the fabric swatch book in one of our branches to compare true colours and feel the range of beautiful textures. We can arrange to post swatches to you free of charge, just ask in store. All fabric options are the same price.



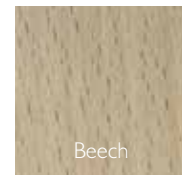
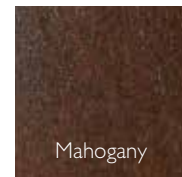
# Bedsteads and our commitment

All mattresses in our Natural collection range are suitable for divans and bedsteads. Our Lincoln bedstead offers an alternative to a divan. It's available with a high or low foot end and can be upholstered in any fabric, shown on page 33.

Because mattresses can feel firmer when used on a bedstead, please request to try any mattress you are considering on a bedstead instore. Our Partners will be happy to advise. We want you to be entirely happy with your John Lewis bed selection.

To maximise your comfort, the Natural collection pocket sprung undermattress provides additional sprung base comfort without compromising your chosen style.

Please note that when using your new mattress on a bedstead, we advise that slats should be no more than 75mm apart otherwise voiding the guarantee. For more information please view your care guide that will be provided with your mattress upon delivery.



## Our commitment

Sleep soundly knowing that we are committed to be as sustainable and eco-friendly as possible.

Along with a 300 acre farm, our manufacturer also has an FSC® certified forest in North Yorkshire. Once sustainably felled, the wood from the forest goes into our standard and luxury True Edge divan bases. The farm and forest are both less than 30 miles from the factory where the beds are made.

## Recycling

We offer removal and recycling of mattresses and divan sets for £24.95. You can rest assured your old bed will not end its life in landfill, but rather start a new life. To discover more, please visit [www.johnlewis.com/our-services](http://www.johnlewis.com/our-services) (this doesn't yet include bedsteads and headboards).

## 7-year guarantee

Another reason to rest assured is the 7 year guarantee that comes with all mattresses and beds in this range.

Our John Lewis guarantee provides full cover against mechanical breakdown through normal use. If your item develops a fault during the 7 year guarantee period, we will arrange for it to be repaired, or replaced should repair not be possible. This commitment is free of charge, including all parts and labour.

Our 7 year guarantee covers our mattresses for tuft breakage, spring unit failure, side stitching and zip breakage. Divans are covered for breakage to runners, castors and frame construction. For further information, please visit [www.johnlewis.co.uk](http://www.johnlewis.co.uk).





JOHN LEWIS  
& PARTNERS

John Lewis Partnership  
171 Victoria Street London SW1E 5NN  
[www.johnlewis.com](http://www.johnlewis.com)

