

The  
Ultimate  
collection

by John Lewis







<b>7</b>	Introduction
<b>8</b>	Ultimate artisans
<b>11</b>	Ultimate comfort
<b>12</b>	Ultimate innovation
<b>15</b>	Legacy of comfort
<b>17</b>	<b>Welcome to The Ultimate collection</b>
<b>18</b>	Ultimate No 1
<b>24</b>	Ultimate No 2
<b>30</b>	Ultimate No 3
<b>37</b>	<b>Ultimate options</b>
<b>38</b>	Ultimate fabrics
<b>40</b>	Ultimate product matrix
<b>40</b>	Ultimate legs
<b>41</b>	Ultimate USB port
<b>41</b>	Ultimate luxury pocket sprung True Edge divan
<b>42</b>	Ultimate backlift divan
<b>44</b>	Ultimate lighting



*"Quality is not an act, it is a habit."*

**Aristotle**



# The Ultimate collection

by John Lewis

## **Oxford dictionary definition**

Ultimate (noun): the finest or most superior quality of its kind

*“the ultimate in luxury”*

**John Lewis and Spink & Edgar have combined over 300 years of bed manufacturing, design and experience to produce the Ultimate collection of luxury mattresses, divans and headboards.**

The Ultimate collection has been created using four key design pillars to produce, we think, the most exceptionally comfortable and luxurious mattresses. With these pillars of comfort, support, luxury and innovation, we have rewritten standard bed manufacturing rules to ensure a sleep experience that pushes the boundaries of comfort to new levels.

Spink & Edgar is one of the world's leading authorities on innovating and designing pocket springs and natural fillings. It has been recognised by Her Majesty Queen Elizabeth II with the granting of two Queen's Awards for Enterprise, in Innovation and Sustainable Development; the only bed manufacturer in the world to have been awarded these prestigious accolades. Harnessing this considerable expertise, the Ultimate collection uses only 100% natural fillings, some of which are grown in Yorkshire on the Spink & Edgar farm and others, such as tree silk, alpaca wool and pashmina wool, are procured from sustainable sources around the world. This amalgamation of sumptuous natural comfort fibres has been combined with the world's smallest pocket springs to produce John Lewis's most technically advanced pocket spring mattress collection since opening our doors for the first time 150 years ago.

Welcome to ultimate luxury...

# Ultimate artisans

*“Perfection is attained by  
slow degrees; it requires the  
hand of time.”*

**Voltaire**

**Based on 175 years of experience passed down from generation to generation of skilled family bed makers, the Ultimate collection has been hand-crafted by true artisans, whose quality values are channelled from a bygone era that taught them that perfection cannot be hurried.**

From hand nested and stitched 100% calico-covered pocket springs to expertly hand side stitched borders, the Ultimate collection of mattresses is lavished with care and attention to detail mastered through years of experience.

The John Lewis Ultimate collection bed makers are skilled in combining time-honoured craftsmanship with innovation to ensure that their mattresses provide the very best sleep experience. From growing, processing and hand teasing natural fillings to designing and engineering technologically advanced pocket springs, the John Lewis Ultimate collection craftsmen are always seeking new ways to perfect comfort.

The outcome of this research, development and experience is personified in the Ultimate collection of three mattresses...The very best sleep luxury designed and developed by the very best bed makers.



Hand side stitching a mattress



Hand stitching the calico pocket springs





Cross-section of Ultimate No 3 mattress

# Ultimate comfort

**The unique and innovative pocket spring system combines with sumptuous natural fillings to provide a luxurious and unsurpassed comfort experience, which will revolutionise the quality of your sleeping and resting hours.**

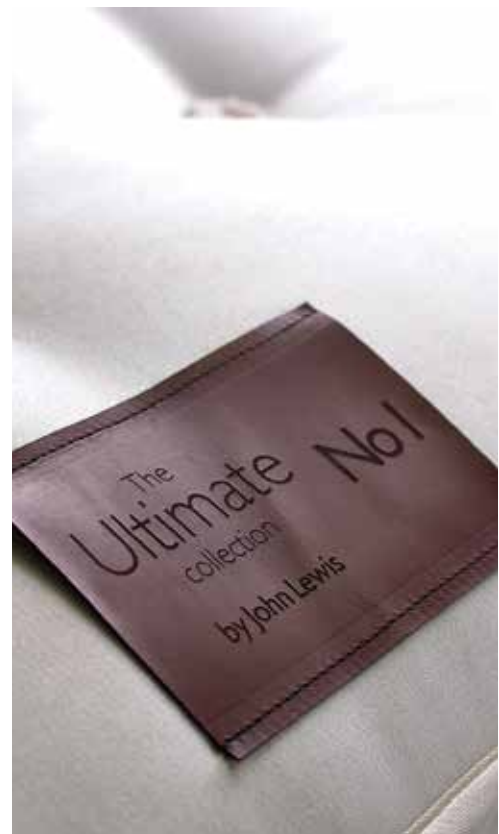
Spink & Edgar's home-grown natural fillings are complemented by sumptuous exotic fillings such as pashmina wool, silk, angora wool, alpaca wool and super-fine tree silk to ensure exceptional support and the most comfortable sleep environment. The natural fibres are quality checked, weighed and blended to form a unique recipe for each and every mattress in the Ultimate collection.

Natural comfort fibres help to regulate temperature by making certain that moisture is dealt with quickly and efficiently. This, coupled with the superior air flow that natural fibres allow through the mattress, ensures that allergens are significantly reduced.

By using 100% natural upholstery fillings, the Ultimate collection has been designed to be completely recyclable at the end of life, ensuring that you can rest comfortably in the knowledge that your investment will not cost the earth.

*“Luxury must be comfortable, otherwise it is not luxury.”*

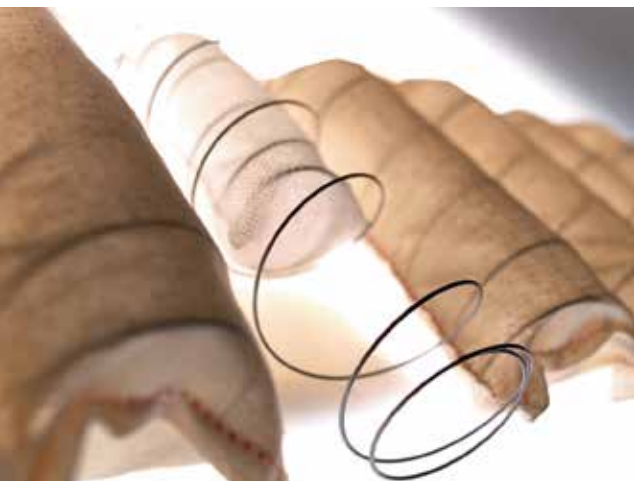
**Coco Chanel**



# Ultimate innovation

*“Good design is about how  
something works, not how it looks.  
It’s what’s inside that counts.”*

**James Dyson**



**They say bigger is better... Like a super car engine, the Ultimate collection range of mattresses has the largest and most precision-engineered spring systems in the world, providing the very best comfort, performance and support.**

To ensure the quality of its springs, Spink & Edgar employs engineers and metallurgists to design and manufacture the spring wire and the unique pocket spring production machines. Up to 6.5 kilometers of premium alloy wire is precisely turned into thousands upon thousands of individual springs, which combine in numerous layers to provide the ultimate support.

The central foundation Revolution® pocket spring system combines two pocket springs in one. By placing a smaller pocket spring within a larger pocket spring, postural support is achieved in a two-stage process. Adding up to a further eight layers of high-density miniature pocket springs provides a level of support that is beyond compare. Not only do these springs move up and down and from side to side, but they also pivot, allowing the surface of the spring to map the exact shape of the body.

Working in harmony, the 21,000\* individual pocket springs in an Ultimate collection mattress provide a level of superior support that cannot be achieved by any other pocket spring system.

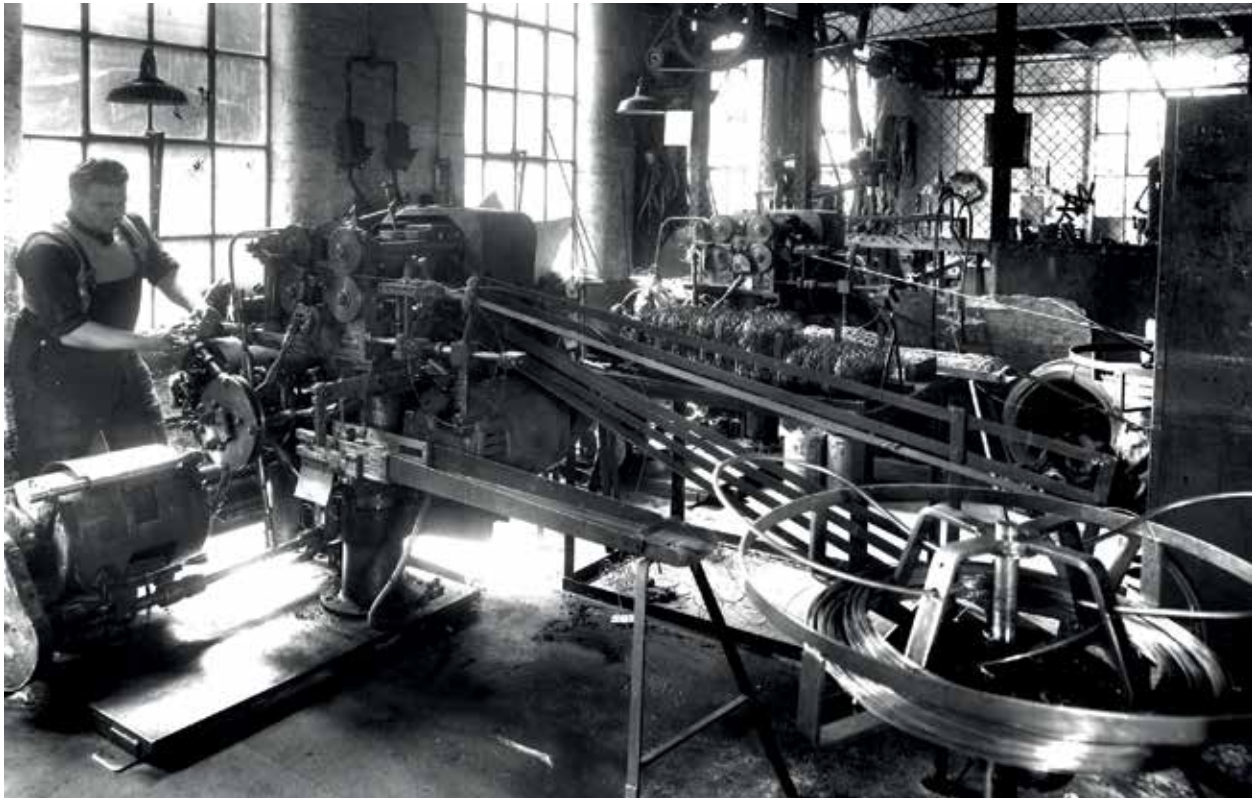
**Welcome to the ultimate comfort engine...**

\*in a No 3 150cm x 200cm mattress size









Manufacturing springs at Spink & Edgar in 1954



Manufacturing springs at Spink & Edgar in 2014

# Legacy of comfort

**Designing a luxury mattress collection is not easy, generations of experience coupled with expertise ensure that the right combination of innovative materials and craftsmanship are married together to provide superior levels of luxury comfort.**

Since 1864 John Lewis has sought to procure the very best products, to ensure the Great British consumers' exacting quality standards are met. With a mission to always push the boundaries of innovation, John Lewis are at the forefront of mattress comfort design and the Ultimate collection is no exception to this rule.

Spink & Edgar is a Great British family bed maker that has been manufacturing beds since 1840. The company not only designs and makes its own pocket springs and pocket spring machines, but it also owns a farm in North Yorkshire where it raises sheep for their wool and grows hemp and flax linen for its sumptuous fibres.

**Welcome to a legacy of comfort...**

*"We are what we repeatedly do. Excellence, then, is not an act, but a habit."*

**Aristotle**





Welcome to  
The Ultimate collection...



# Ultimate No I

## **Ultimate No I**

180cm x 200cm Ultimate No I mattress

180cm x 200cm Luxury True Edge divan in Sienna Chocolate fabric

180cm Gloucester Deep headboard in Sienna Chocolate fabric





# Ultimate No I



## **Ultimate No I**

180cm x 200cm Ultimate No I mattress

180cm x 200cm Luxury True Edge divan in Canvas Steel fabric

180cm Lancaster Deep headboard in Canvas Steel fabric





# Ultimate No I

**The Ultimate No I mattress introduces custom-made luxury. Hand made in Yorkshire, the Ultimate No I mattress combines sumptuous natural fillings with innovative pocket spring technology for a superb night's sleep.**

Combining 15,000\* individual pocket springs and four rows of hand side stitching with kapok tree silk, cashmere wool, angora wool, silk, Yorkshire wool, British fleece wool, Egyptian cotton, Yorkshire linen, cotton, horse hair and Yorkshire hemp, the Ultimate No I mattress presents a new level of comfort and support.

The Ultimate No I mattress is available in two tensions and a host of size options including zip and link where a different tension can be specified for each side of the mattress....the choice is ultimately yours.

\*in a No I 150cm x 200cm mattress size

*“Fashion is architecture: it is a matter of proportions.”*

**Coco Chanel**



## **Ultimate No I**

180cm x 200cm Ultimate No I mattress

180cm x 200cm Luxury True Edge divan in Canvas Steel fabric

180cm Lancaster Deep headboard in Canvas Steel fabric





# Ultimate No2



## **Ultimate No2**

180cm x 200cm Ultimate No2 mattress

180cm x 200cm Luxury True Edge shallow divan in Chic Mink fabric

Divan shown with Shark's Tooth leg design in Mahogany finish

180cm Lancaster Deep headboard in Chic Mink fabric





# Ultimate No2



## **Ultimate No2**

180cm x 200cm Ultimate No2 mattress

180cm x 200cm Luxury True Edge shallow divan in Flax Parchment fabric

Divan shown with Shark's Tooth leg design in Mahogany finish

180cm Richmond Deep headboard in Flax Parchment fabric







# Ultimate No2

*“Great things are done  
by a series of small things  
brought together.”*  
**Vincent Van Gogh**



**The Ultimate No2 mattress epitomises opulent comfort and bespoke luxury hand-made tailoring. The innovative pocket spring system coupled with invitingly lavish natural fillings deliver a supremely relaxing night’s sleep.**

Combining 17,000\* individual pocket springs and five rows of hand side stitching with Alpaca wool, kapok tree silk, cashmere wool, angora wool, silk, Yorkshire wool, British fleece wool, Egyptian cotton, Yorkshire linen, cotton, horse hair and Yorkshire hemp, the Ultimate No2 mattress takes luxurious comfort to the next level.

The Ultimate No2 mattress is available in two tensions and a host of size options, including zip and link, where a different tension can be specified for each side of the mattress....the choice is ultimately yours.

\*in a No2 150cm x 200cm mattress size

## **Ultimate No 2**

180cm x 200cm Ultimate No2 mattress

180cm x 200cm Luxury True Edge shallow divan in Flax Parchment fabric

Divan shown with Shark’s Tooth leg design in Mahogany finish





# Ultimate No3



## **Ultimate No 3**

180cm x 200cm Ultimate No 3 mattress

180cm x 200cm Luxury True Edge divan in ChicVellum fabric

180cm Richmond Deep headboard in ChicVellum fabric







# Ultimate No3



## **Ultimate No3**

180cm x 200cm Ultimate No3 mattress

180cm x 200cm Luxury True Edge divan with 4 drawers in Sienna Ash fabric

180cm Gloucester Deep headboard in Sienna Ash fabric







# Ultimate No3

*“Sleep is that golden chain  
that ties health and our  
bodies together.”*

**Thomas Dekker**

**The Ultimate No3 mattress has been hand built without compromise and represents the ultimate in sleep couture and luxurious comfort. Every element, from the innovative pocket spring system to the reassuringly deep and plush natural fillings, has been designed to create a sumptuous sleep experience.**

Combining 21,000\* individual pocket springs and six rows of hand side stitching with pashmina wool, alpaca wool, kapok tree silk, cashmere wool, angora wool, silk, Yorkshire wool, British fleece wool, Egyptian cotton, Yorkshire linen, cotton, horse hair and Yorkshire hemp, the Ultimate No3 mattress personifies sleep comfort.

The Ultimate No3 mattress is available in two tensions and a host of size options, including zip and link, where a different tension can be specified for each side of the mattress...the choice is ultimately yours.

\*in a No3 150cm x 200cm mattress size

## **Ultimate No 3**

180cm x 200cm Ultimate No 3 mattress

180cm x 200cm Luxury True Edge divan with 4 drawers in Sienna Ash fabric

180cm Gloucester Deep headboard in Sienna Ash fabric











# Ultimate options

**There are ways that your bedroom environment can be enhanced to give you the most relaxing and contented night's sleep. Our host of stylish, functional and comfort-enhancing options ensure that your rest time will never be the same again...welcome to the ultimate options.**

Available in two heights and engineered with the highest count of pocket springs ever experienced in a mattress base, the True Edge luxury pocket sprung divan is the perfect partner for an ultimate mattress and headboard. Further enhancement can be made to your interior design by bespoke tailoring the headboard and divan with a choice of sophisticated fabric colours and styles.

To add a further dimension of convenience, your Ultimate headboard and divan can also be specified with remotely controlled LED mood lighting, USB charging ports, drawer storage and a pocket sprung remote-controlled back lift.

*“The details are not the details.  
They make the design.”*

**Charles Eames**



# Ultimate fabrics



Ultimate Divans and Headboards are available in a choice of fabrics.



Please see fabric swatches in store for exact selection choices.



## Ultimate product matrix



Model	Ultimate No 1	Ultimate No 2	Ultimate No 3
Spring count 150cm mattress	15,000	17,000	21,000
Spring type	Revolution®, Super HD, Super HD Airflow	Revolution®, Super HD, Super HD Airflow	Revolution®, Super HD, Super HD Airflow
Fillings	Tree Silk, Cashmere, Silk, Angora, Yorkshire Wool, British Fleece Wool, Egyptian Cotton, Linen, Cotton, Wool, Horse Hair and Hemp	Alpaca, Tree Silk, Cashmere, Silk, Angora, Yorkshire Wool, British Fleece Wool, Egyptian Cotton, Linen, Cotton, Wool, Horse Hair and Hemp	Pashmina, Alpaca, Tree Silk, Cashmere, Silk, Angora, Yorkshire Wool, British Fleece Wool, Egyptian Cotton, Linen, Cotton, Wool, Horse Hair and Hemp
Side stitch rows	4	5	6
Fabric	100% Viscose	100% Viscose	100% Viscose
Air vents	16	16	16
Tufts	Wool	Wool	Wool
Need to turn	Yes	Yes	Yes

## Ultimate legs

Complementing the most elegant interior design schemes, the luxury low height True Edge divan is available with a choice of three contemporary leg styles, each offered in three different finishes – Mahogany, Natural and Antique.



Tapered leg in Mahogany finish  
Leg height: 15cm



Shark's Tooth leg in Antique finish  
Leg height: 15cm



Angled Round leg in Natural finish  
Leg height: 10cm



## Ultimate USB port

The Ultimate collection is available with a USB port option\* for handy charging of mobile phones, e-readers and other devices that accept USB charging. Fitted to the rear at either side of an Ultimate headboard, this convenient and functional option is a must for those who need a tidy and accessible charging port for their digital devices.

\*USB ports need to be purchased with an Ultimate collection headboard

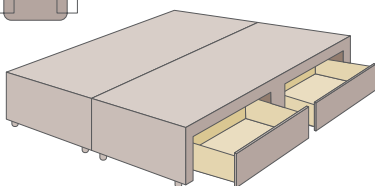


## Ultimate luxury pocket sprung True Edge divan

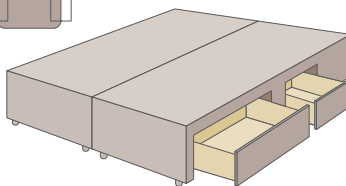
Available in a host of fabric options, the luxury True Edge divan can be specified in a low height format with three wooden leg options or in a standard height option with traditional metal shepherd castors and three solid wood drawer options.

The True Edge system containing 3,500 individual pocket springs improves on conventional sprung edge divans by providing the ultimate support to your hand side stitched mattress, ensuring that the whole of the mattress surface can be slept on without any fear of 'roll off'.

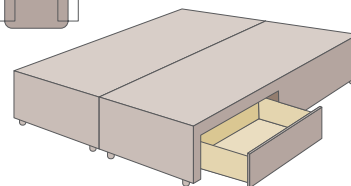
All of the Scandinavian spruce timber used in the construction of an Ultimate True Edge divan is certified by the Forest Stewardship Council®. Renowned for its strength, fine grain and trueness of line, it forms the solid foundation for your Ultimate mattress.



4 Standard Drawers



2 Continental Drawers  
2 Standard Drawers



2 Standard Drawers



# Ultimate backlift divan



## **Ultimate backlift divan**

180cm x 200cm Ultimate No I mattress

180cm x 200cm backlift divan in Sienna Ash fabric single mechanism

180cm Gloucester Deep headboard in Sienna Ash fabric



**If you need the flexibility, comfort and support of an elevated back position in bed whilst reading your favourite book, watching television or perhaps just to assist with sleeping, then why not consider adding the Ultimate backlift divan to your Ultimate mattress.**

All Ultimate mattresses can be used with the backlift divan, which offers all the comfort and benefits of a standard pocket sprung divan base, but with the added flexibility of a remote-controlled motorised backlift. Available as a single mechanism or as a dual backlift\*, where each side of the bed has its own control and motor to enable independent adjustment that won't affect your partner.

\*Dual backlift divan must be ordered with a zipped and linked mattress





# Ultimate lighting



## Ultimate lighting

180cm x 200cm Ultimate No2 mattress

180cm x 200cm Luxury True Edge shallow divan in Chic Mink fabric

Divan shown with Shark's Tooth leg design in Mahogany finish

180cm Lancaster Deep headboard in Chic Mink fabric

**Good lighting provides  
ambience, romance and  
turns your sleep  
environment into a  
sanctuary away from the  
hustle and bustle of  
everyday life.**

Remotely controlled, the Ultimate lighting system has three levels of lighting comfort to reflect your mood or just for convenience when trying not to disturb your partner. Available on all Ultimate divan types and headboards, the Ultimate lighting system is a necessity for those who wish to experience sleep comfort with an added dimension.





The  
Ultimate  
collection

by John Lewis