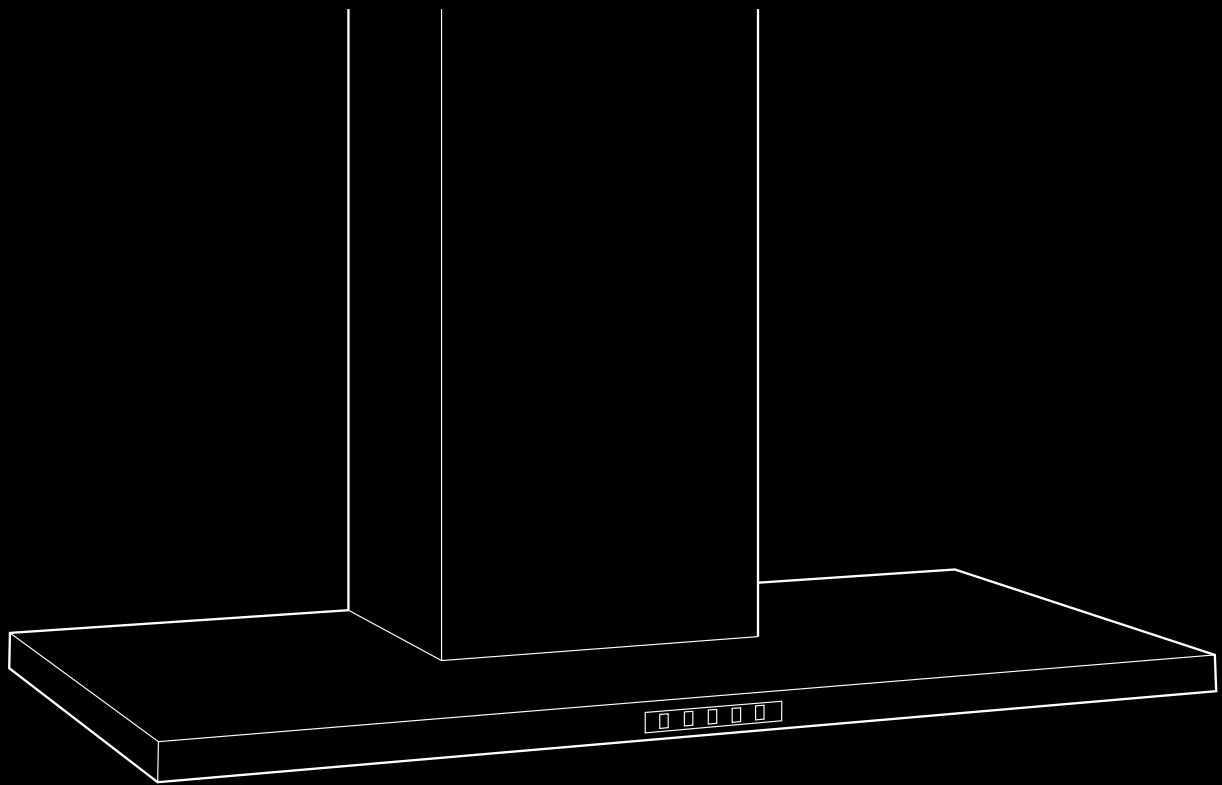


60cm

Cooker hood

Stainless steel

JLHDA602



User guide

John Lewis

Contents

Contents	3
Introduction	4
Safety is important	4
In the box	4
Safety information	5
Important safety information	5
<i>Warnings</i>	5
<i>Cautions</i>	6
Electrical information	6
<i>Mains supply</i>	6
Operation	7
Controls	7
Display	7
Care, cleaning and servicing	8
Care and cleaning	8
Cleaning and replacing filters	8
<i>Aluminium filters</i>	8
<i>Charcoal filters (not supplied)</i>	8
Replacing lights	9
Servicing	9
Installation	10
Preparation for installation	10
Installing the cooker hood	10
Disposal	12
Disposal	12
Troubleshooting	13
<i>Troubleshooting</i>	13
Guarantee and service	14
Guarantee	14
Service	14
Specifications	15

Introduction

Thank you for purchasing this JLHDA602 chimney hood.

Please take time to read these instructions and retain for future reference.

Safety is important

To ensure your safety and the safety of others, please read the Safety information **before** you operate this product.

Keep this information in a safe place for future reference.

In the box

You will find the following:

- Cooker hood
- Telescopic chimney
- User guide

Note: If any of the items listed are damaged or missing, please contact your local John Lewis branch.

Safety information

Important safety instructions - read carefully before use

Take note of the following safety information:



Warning! To prevent fire or shock hazard, do not expose this cooker hood to rain or moisture.



Warning! Always remove the mains plug from the wall socket when not in use or before any service operation.



Warning! There are no user serviceable parts on this cooker hood. Refer servicing to qualified service personnel.



This symbol indicates that there are important operating and maintenance instructions in the literature accompanying this cooker hood.



This symbol indicates that dangerous voltages constituting a risk of electric shock are present within this cooker hood.

Important safety information

It is most important that this guide should be retained with the cooker hood for future reference. Should you move house and leave the appliance, always ensure that this guide is supplied with the cooker hood in order that the new owner can get to know the functionality and the relevant warnings.

These warnings have been provided in the interest of safety. You **MUST** read them carefully before installation or use. If you are unsure of the meanings of these warnings contact the John Lewis branch from which you purchased the cooker hood.

To avoid accidents to property or people it is important to follow the instructions given. Failure to do so removes any liability from John Lewis.

Warnings

- Any installation work must be undertaken by a qualified electrician or competent person.
- This is a class II electrical appliance and therefore no earthing cable is required.
- If the cooker hood is installed for use above a gas appliance, the provision for ventilation must be in accordance with the Gas Safety Codes of Practice, the Gas Safety (Installation & Use) Regulations, the Building Regulations issued by the Department of the Environment and, where applicable, the Building Standards (Scotland) (Consolidated) Regulations issued by the Scottish Development Department.
- Do not install this cooker hood above a cooker with a high-level grill.
- Keep all packaging well away from children. There is risk of suffocation.
- If the room where the cooker hood is to be used contains a fuel burning appliance (such as a gas or oil fired central heating boiler), the boiler's flue must be a room sealed or balanced flue type. Alternatively, you should make sure that there is adequate air inlet into the room at all times so that fumes from the boiler are not drawn back into the room by the cooker hood.
- The ducting system for this cooker hood must not be connected to an existing ventilation system which is being used for any other purpose.
- Do not allow the power cord to be crushed or bent excessively.
- Do not let the power cord touch or pass over the hob or other hot surface.
- Do not hold the power cord or plug with wet hands.
- Never use a damaged power cord or plug, or a loose mains socket.

Cautions

- This cooker hood is designed for domestic use only.
- This cooker hood is designed to be operated by adults. Children should not be allowed to tamper with the controls or play with the cooker hood.
- Do not leave frying pans unattended during use, as overheated fats and oils may catch fire.
- Do not do flambé cooking under this cooker hood.
- Do not leave naked flames under the cooker hood.
- Make sure foreign objects do not get into the cooker hood or obstruct the motor.
- Do not use the cooker hood without filters fitted.
- Clean or replace the filters regularly to avoid oil build up.
- Do not replace the filters while the cooker hood is operating.
- Replacement filters should be bought from authorised dealers.
- Do not use abrasive cleaning materials or scouring pads when cleaning the cooker hood.

Electrical information

Mains supply

Should the power supply cable need to be replaced, this must be carried out by an approved service engineer. John Lewis declines any liability should this safety measure not be observed.

Before switching on, make sure the electricity supply voltage is the same as that indicated on the cooker hood's rating plate.

The cooker hood must be installed by a qualified electrician or competent person.



Warning! The appliance should not be connected to the electrical supply by means of an extension cable.

Operation

Controls



The controls are (left to right):



Light. Press this button to operate the lights in the cooker hood.



On / Off / Decrease Fan Speed. When the cooker hood is switched off, press this button to switch the cooker hood on at speed setting 1.

When the cooker hood is switched on, press this button to reduce the fan speed (unless it is already at speed setting 1).

Alternatively, press and hold this button for 2 seconds to switch the cooker hood off.



Increase Fan Speed. When the cooker hood is switched on, press this button to increase the fan speed. If the cooker hood is already at speed setting 3, pressing this button again activates intensive speed. The intensive speed setting will operate for 6 minutes or until you press this button again.



Timer / Clean Air. When the cooker hood is switched on, press this button to set a 15 minute timer. The cooker hood will operate at the currently selected speed (speed setting 1-3 only, not intensive speed) for 15 minutes and then switch off. This is useful for clearing cooking fumes and odour. To switch the timer off before the 15 minutes are up, press this button again.

When the cooker hood is switched off, press and hold this button for 2 seconds to activate the clean air function. The cooker hood will operate automatically at speed 1 for 10 minutes every hour until you press this button again.

Note: For regular cooking, we recommend using fan setting 1 or 2. If you are frying or cooking other dishes which generate a large amount of smoke or steam, we recommend using fan setting 3 or intensive speed.

Display



When the cooker hood is switched on, the display indicates the following:

Fan Speed Setting. When the cooker hood is switched on, the current fan speed is shown as a solid number (1, 2 or 3). If intensive speed has been selected, the number 3 will flash.

Timer. If the timer has been activated, the decimal place (spot) will flash.

Clean Air. If the clean air function has been activated, the following is displayed:

A rotating indicator is shown when the motor is running.

The letter **C** is shown when the motor is off.

Filters. If this indicator is:

Alternating between the fan speed and the letter **F** - The anti-grease filters must be washed.

Alternating between the fan speed and the letter **A** - The active carbon filters must be replaced.

To reset the filters indicator, when the cooker hood is switched off press and hold the A (light) button for 5 seconds until the letter **F** or **A** is shown and the display stops flashing. If the display does not stop flashing, switch the cooker hood on and press and hold the A (light) button for 5 seconds.

Note: See page 8 for more information on cleaning filters.

Care, cleaning and servicing

Note: Switch off and unplug the cooker hood before carrying out any cleaning or maintenance work.

Care and cleaning

Clean the interior and exterior casing using a cloth with water and mild (neutral) detergent.

Do not use abrasive cleaning materials or scouring pads when cleaning the cooker hood as this may damage the stainless steel finish.

Cleaning and replacing filters

This cooker hood is supplied with aluminium filters.

Aluminium filters

Aluminium filters are designed to absorb grease and dust during cooking. They should be removed and cleaned at least once every two months, or more often if you regularly fry food.

The filters may discolour after a few washes. This is normal and does not mean they have to be replaced.

To clean the aluminium filters:

- 1 Remove aluminium filter (A).
- 2 Wash the filter in warm, soapy water.
- 3 Replace the filter in the cooker hood.

Charcoal filters (not supplied)

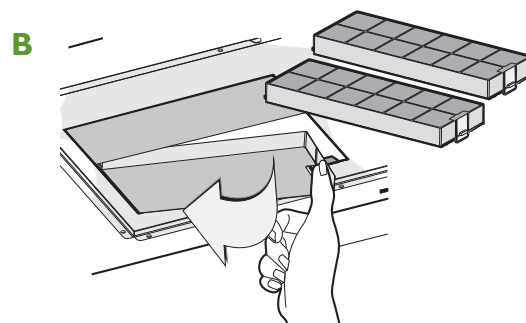
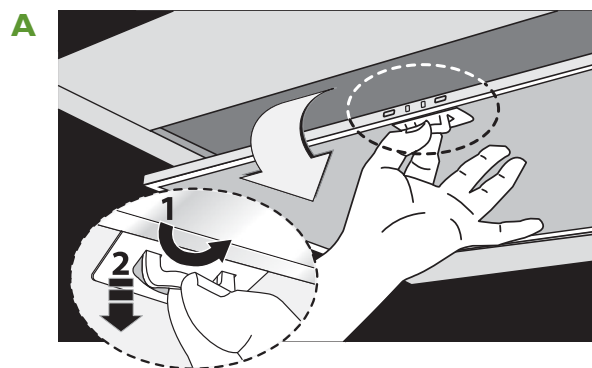
Charcoal filters are designed to absorb grease, dust and unwanted odours during cooking. They are only required when the cooker hood is used for recirculating (i.e. when it is not ducted out).

Non-regenerable charcoal filters must be replaced at least every four months.

To replace the charcoal filters:

- 1 Remove the aluminium panel (A).
- 2 Pull the filter out of the cooker hood (B).
- 3 Replace the filter. The lugs in the plastic housing will hold the filters in place.
- 4 Close the aluminium panel.

Replacement filters can be obtained from www.johnlewis.com.



Replacing lights

Your cooker hood is fitted with LEDs. They should only be replaced by an authorised service engineer.

Servicing

This cooker hood should only be serviced by an authorised service engineer, and only genuine spare parts should be used.

Under no circumstances should you attempt to repair the cooker hood yourself. Repairs carried out by inexperienced persons may cause injury or serious malfunction.

Installation

Preparation for installation

The cooker hood must be mounted so that the minimum distance between the filters and the gas or electric hob is 65cm.

The ducting system for this cooker hood must not be connected to an existing ventilation system which is being used for any other purpose.

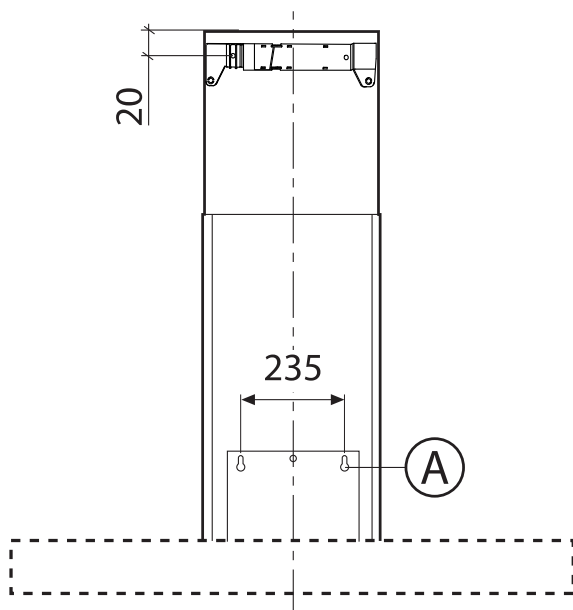
We recommend an air exhaust tube which is the same diameter as the air exhaust outlet hole. If a two-part air exhaust tube is used, the upper part must be placed outside the lower part.

If installing this cooker hood between adjoining wall cabinets, the wall cabinets must not overhang the hob.

Before beginning installation, remove the filters (see page 8). This will make the unit easier to handle during installation.

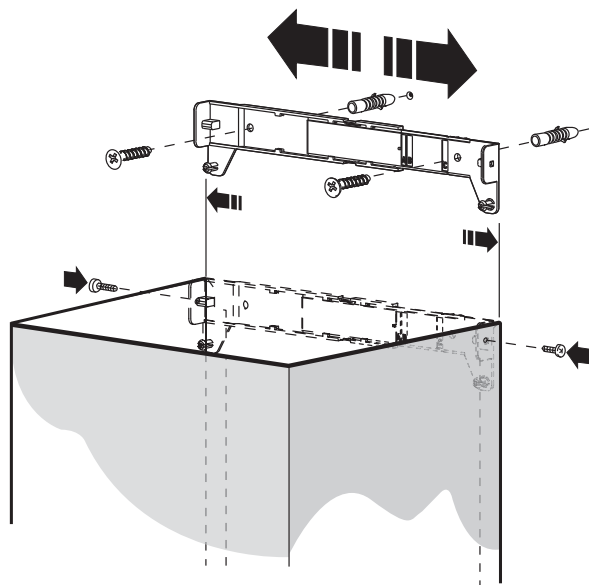
Installing the cooker hood

- 1 Drill holes (A) 235mm apart to allow you to fix the cooker hood to the wall.

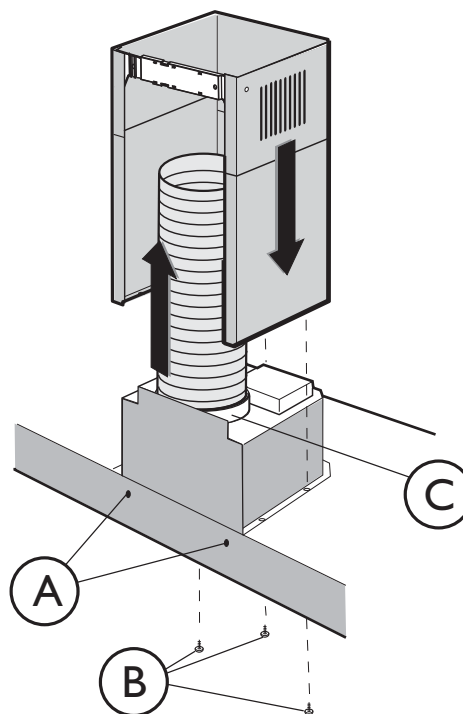


- 2 Fix the cooker hood to the wall and align it horizontally.

- 3 Adjust the width of the support bracket for the upper flue and insert screws to attach it to the wall.



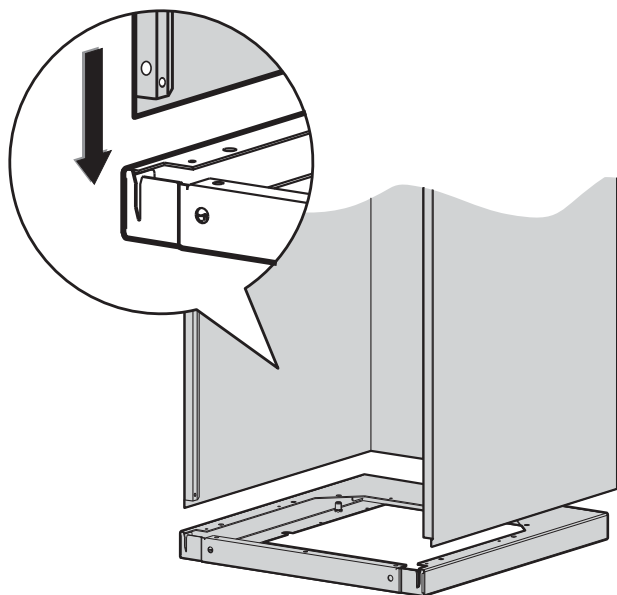
- 4 Connect the flange (C) to the air exhaust hole.



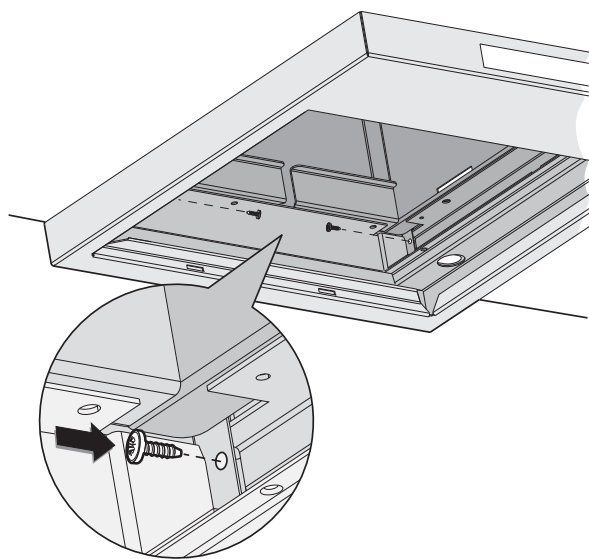
5 Insert the upper flue into the lower flue.

6 Insert screws (B) to attach upper flue to lower flue.

If your flue connects as shown below;



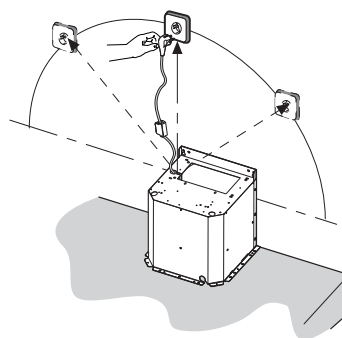
Attach the screws inside the flue as shown below:



7 Insert the filters, as described on page 8.

8 Connect your cooker hood to the electrical supply.

max 90 cm



Your cooker hood is now ready for use.

Disposal

Disposal

This symbol  indicates that this product should not be treated as normal household waste and it should be recycled. John Lewis do not operate instore take back, but as members of the Distributor Take Back scheme have funded the development and upgrade of recycling facilities across the UK. Please take it to your nearest collection facility or for further details contact your local council or visit www.recycle-more.co.uk.

Troubleshooting

To assist in locating possible faults use the help guide below:

Troubleshooting		
Problem	Cause	Correction
Cooker hood not operating effectively		
The cooker hood is not working effectively.	The fan speed is too low.	Select a higher fan speed.
	The filter needs cleaning or replacing.	Clean or replace the filter.
	The air discharge outlet may be blocked.	Check the air discharge outlet and clear any blockages.
Oil or fat collects on the filter.	The filter needs cleaning or replacing.	Clean or replace the filter.
Cooker hood will not operate		
The cooker hood has switched off unexpectedly during operation.	The cooker hood has overheated.	Switch off the cooker hood and wait until it has cooled down.
	The cooker hood is too close to the hob.	Re-site the cooker hood at the correct height.
	No electric current is reaching the cooker hood.	Check that the power is still on. Replace the fuse. If you are unsure how to replace a fuse consult a qualified electrician.
The cooker hood will not start.	The cooker hood is not plugged in or the power is off.	Check that the plug is firmly pushed in and the power is on.
	No electric current is reaching the cooker hood.	Check that the power is still on. Replace the fuse. If you are unsure how to replace a fuse consult a qualified electrician.

If none of the above suggestions resolve the problem please contact your local John Lewis branch. Never attempt to repair the cooker hood yourself.

Guarantee and service

Guarantee

Your cooker hood comes with a three year guarantee against mechanical breakdown through normal use. The guarantee does not cover you against faults caused by accidental damage or misuse. Your original receipt acts as your guarantee so please make sure you retain it throughout the guarantee period. For further details visit johnlewis.com/customer-services.

Service

This product should only be repaired or serviced by an authorised service engineer and only genuine approved spare parts should be used.

If a fault occurs which you cannot resolve through following the advice and information contained within this User Guide, the next step is to contact us on 0330 100 3637. You will be given details for your local service engineer.

When you contact your local service engineer you will need to give the following details:

- Your name, address and post code
- Your telephone number
- Clear and concise details of fault
- The purchase date as found on your receipt
- The model and serial number of the cooker hood. So that you always have these numbers at hand, we recommend you make a note of them here:

Mod :

S.N :

Note: If you call out an engineer to a fault or to repair a fault caused by incorrect use or installation, a charge will be made even if the cooker hood is under guarantee.

Specifications

Specifications of the cooker hood that you have just purchased may vary from the information in this table due to technical innovations.

Type	Chimney Hood
Dimensions	600 mm wide x 500 mm high
Drive Mode	HC30
Extraction Rate (per hour)	286 - 564 m3 (679 m3 Int.)
Number of Speeds	3 + intensive
Noise Level	48 - 63 db (68 db Int.)
Motor Wattage	250w
Washable Metal Filters	Yes

John Lewis Partnership
171 Victoria Street
London SW1E 5NN



Please retain these instructions for further reference