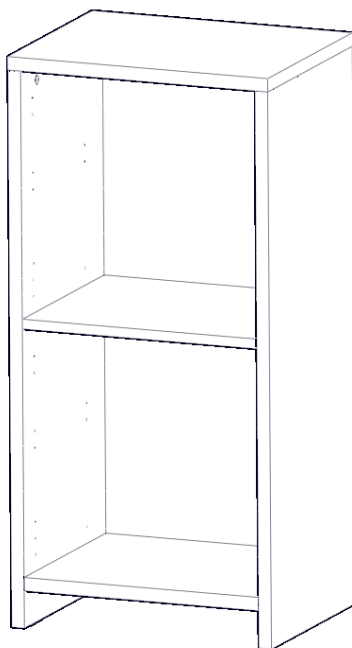
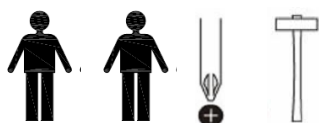

Thank you for purchasing this Oxford Unit 1x2. Please read the instructions carefully before use to ensure safe and satisfactory operation of this product.



Pre-assembly preparation

Please ensure instructions are read in full before attempting to assemble this product

Necessary Tools



Please check the pack contents before attempting to assemble this product. A full checklist of components is given in this leaflet. If any components are missing, please contact the retailer from whom you bought this product.

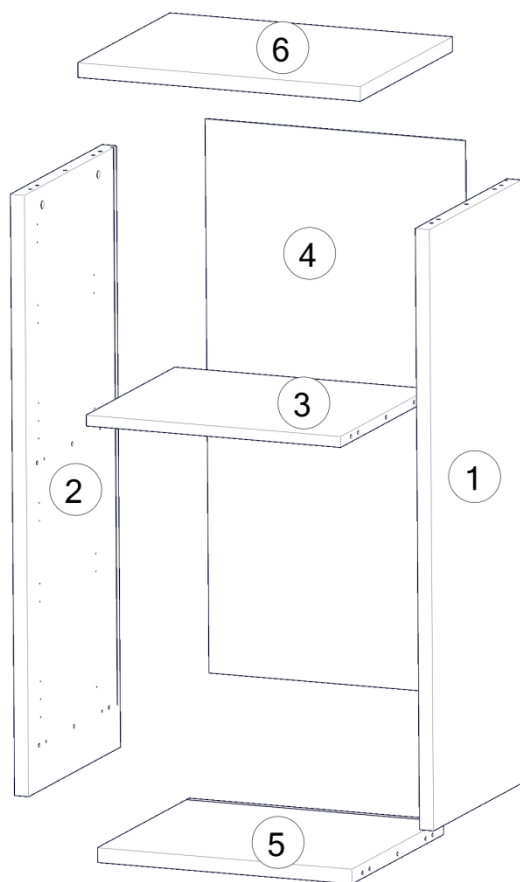
This product is **HEAVY**, it should be assembled as near as possible to the point of use. **TAKE CARE WHEN LIFTING** to avoid personal injury and (or) damage to the product.


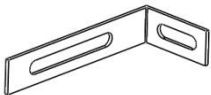



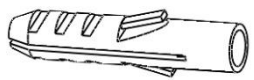
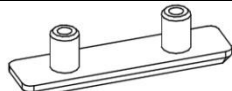


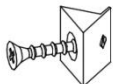
This product takes approximately **40 MINUTES** to assemble with **2 PEOPLE**.

The fittings pack contains **SMALL ITEMS** which should be **KEPT AWAY FROM YOUNG CHILDREN**.

Read this leaflet in full before commencing assembly.

Fittings and parts checklist

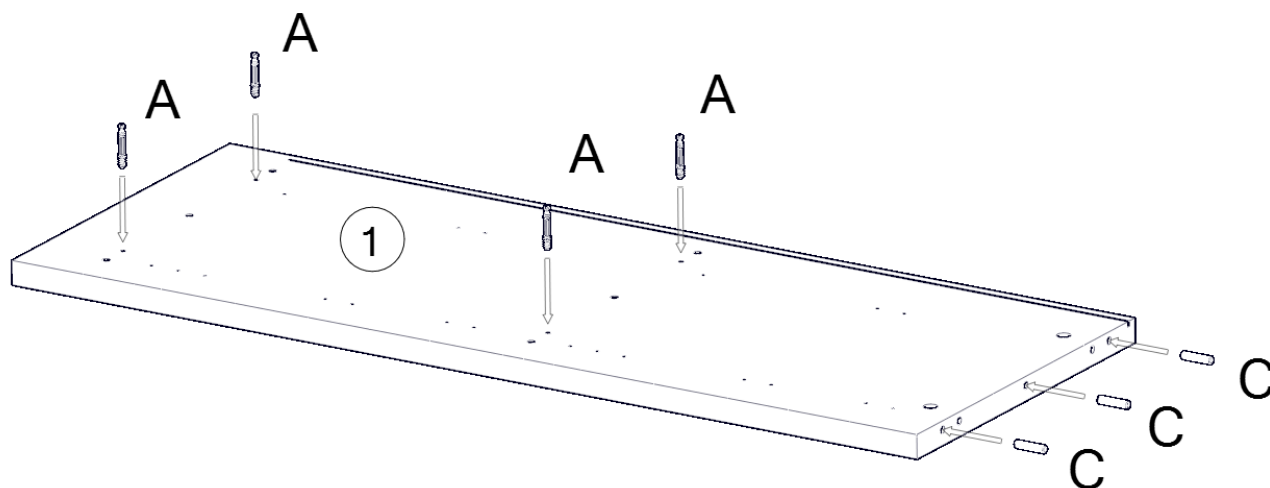


I	RIGHT side panel x 1	2	LEFT side panel x 1	3	Fixed shelf x 1
4	Back panel x 1	5	Base x 1	6	Top x 1
A	Connecting bolts x 12		F	Angle x 1	
B	Camlocks x 12		G	Screws 5x16 x 1	
C	Dowels 8x35 x 18		H	Wall plug x 1	
D	Plastic feet x 4		I	Screw 5x60 x 1	
E	Cover caps x 8		J	Plastic back holder x 4	

Step by step assembly instructions

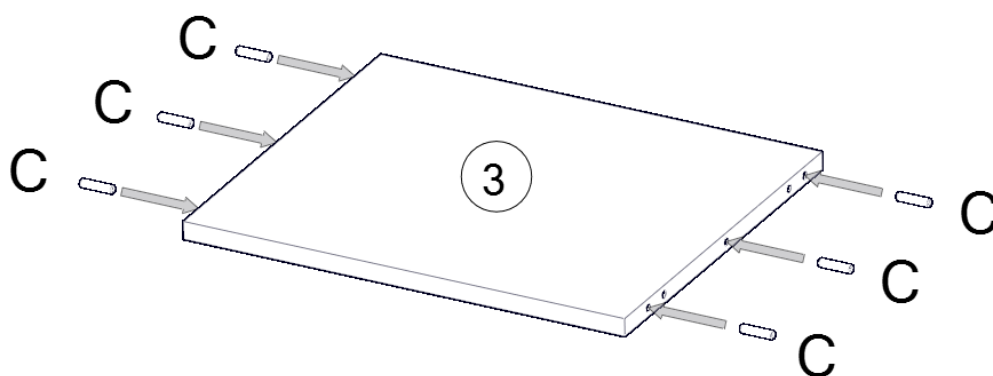
Step One

1. Take the right side panel (1) and lay it on the clean and flat surface with the predrilling holes uppermost.
2. Screw the four connecting bolts (A) into the holes provided.
3. Insert the three dowels (C) into the holes provided.



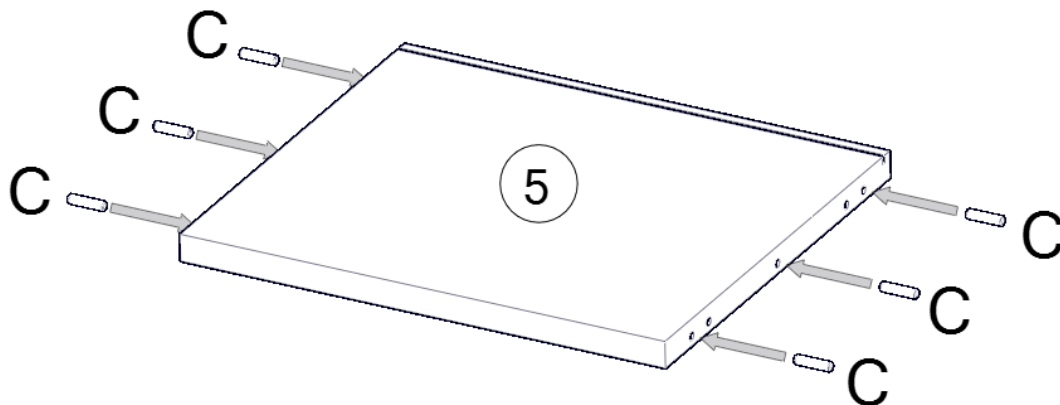
Step Two

1. Take the fixed shelf (3) and lay it on the clean and flat.
2. Insert the six dowels (C) into the holes provided.



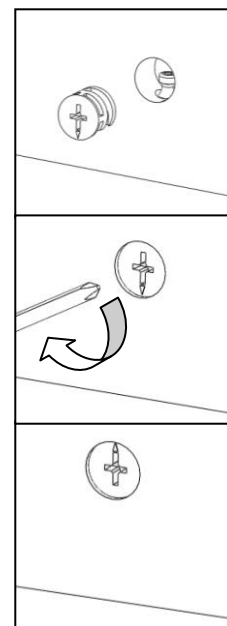
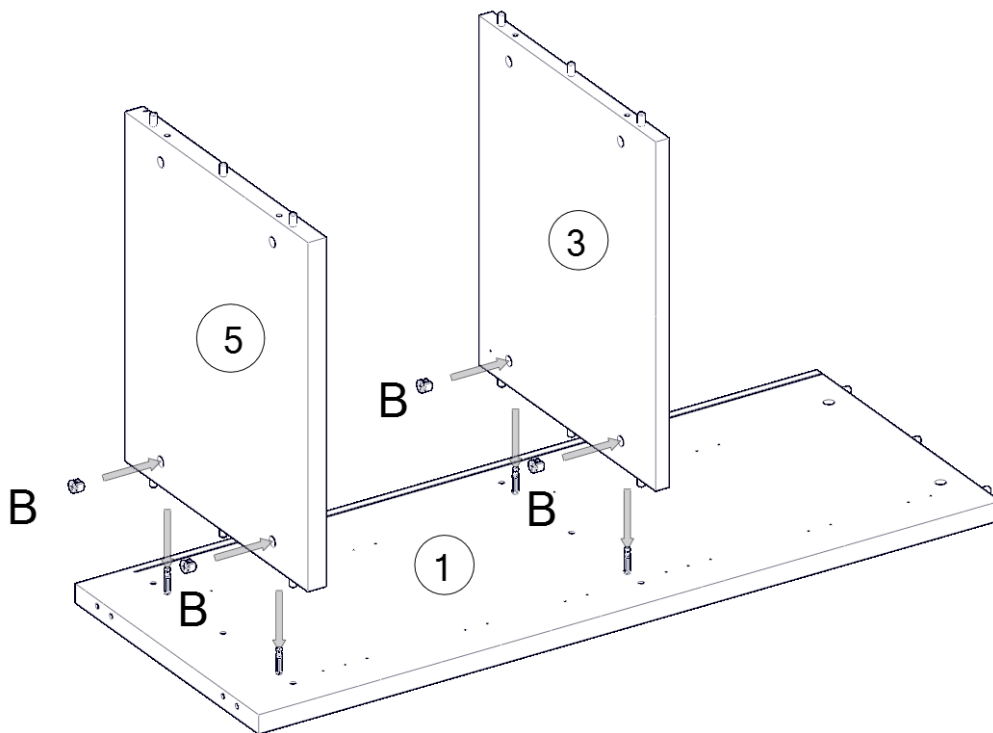
Step Three

1. Take the base (5) and lay it on the clean and flat surface.
2. Insert the six dowels (C) into the holes provided.



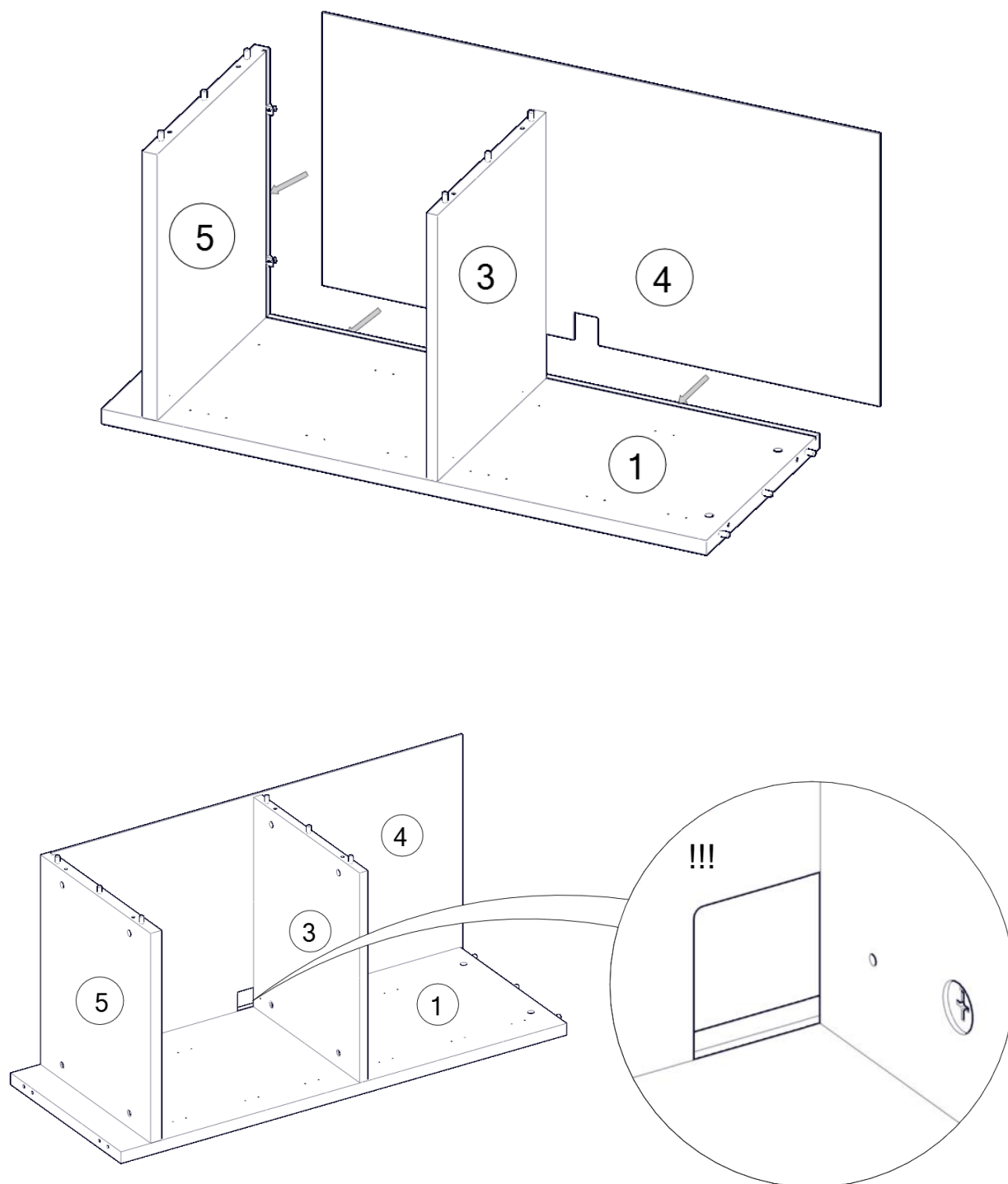
Step Four

1. Take the right side panel (1) and lay them on the clean and flat surface with the connecting bolt turned up.
2. Locate the base (5) and fixed shelf (3) onto the right side panel (1) as shown in the picture.
3. Insert the four camlocks (B) into the holes provided.
4. Tighten the four camlocks (B) using the crosshead screwdriver.



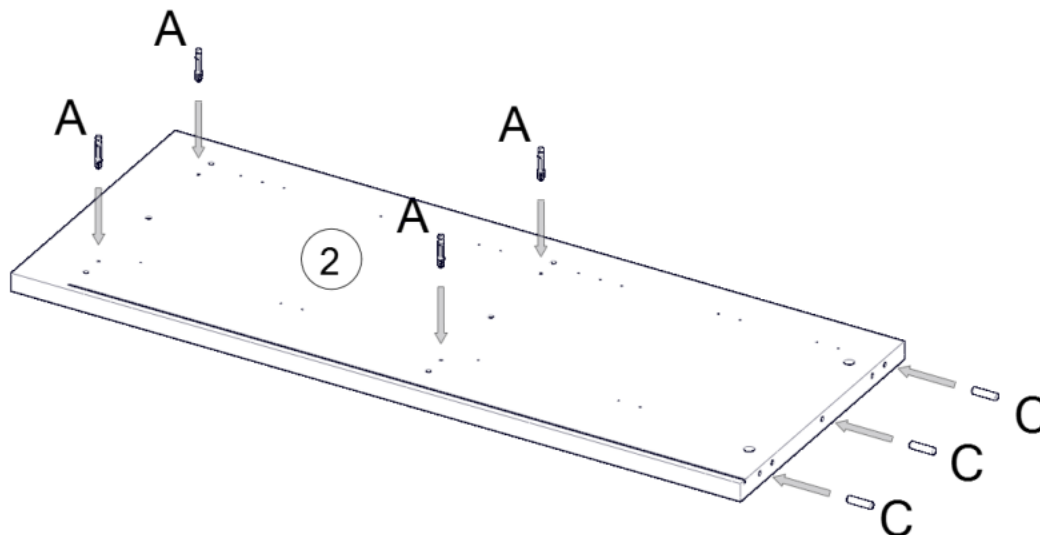
Step Five

1. Locate the back panel (4) onto the right side panel (1) and base (5) as shown in the picture.



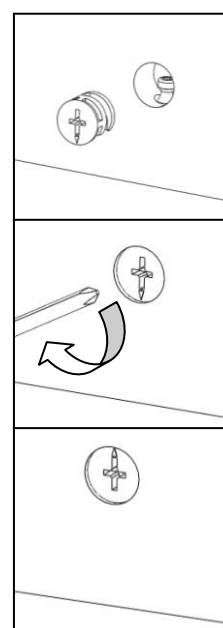
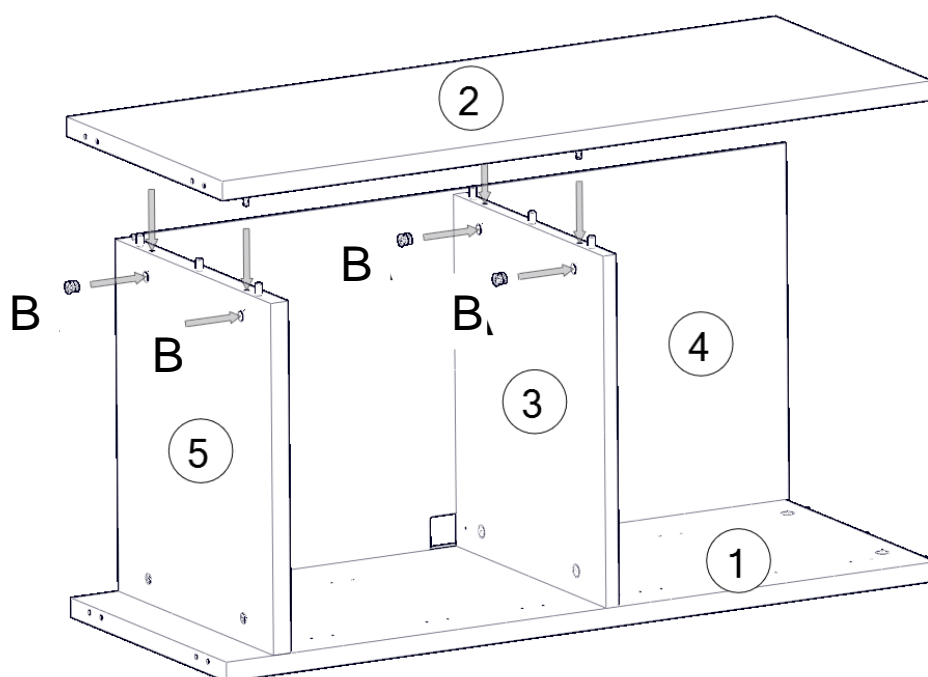
Step Six

2. Take the left side panel (2) and lay it on the clean and flat surface with the predrilling holes uppermost.
3. Screw the four connecting bolts (A) into the holes provided.
4. Insert the three dowels (C) into the holes provided.



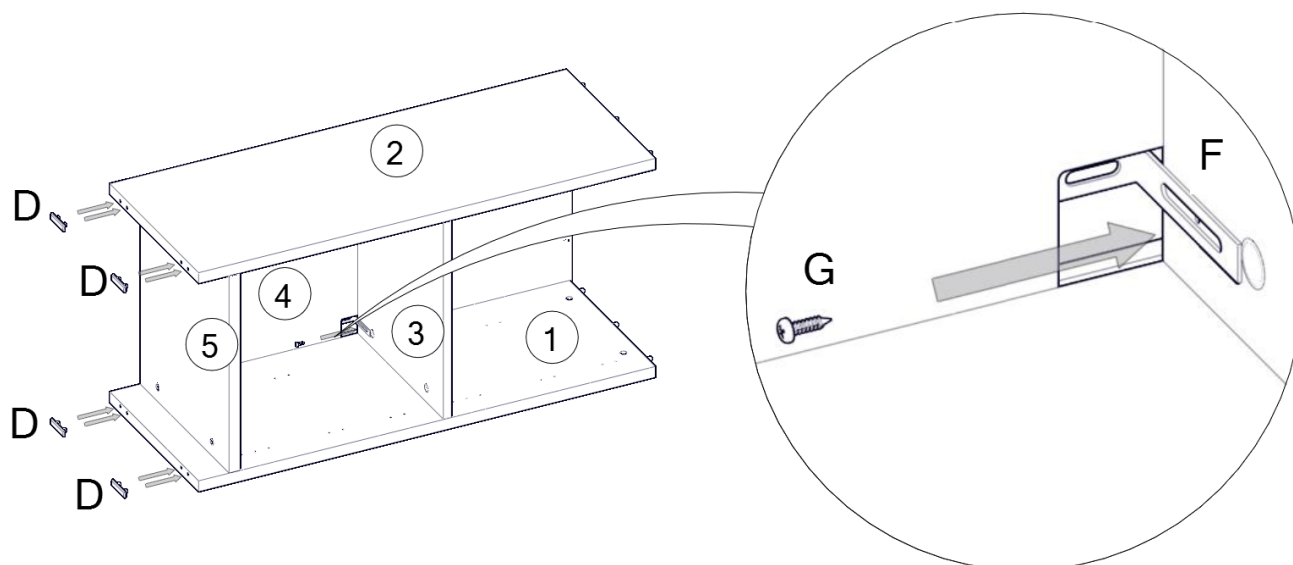
Step Seven

1. Locate the left side panel (2) onto the base (5) and fixed shelf (3) as shown in the picture.
2. Insert the four camlocks (B) into the holes provided.
3. Tighten the four camlocks (B) using the crosshead screwdriver.



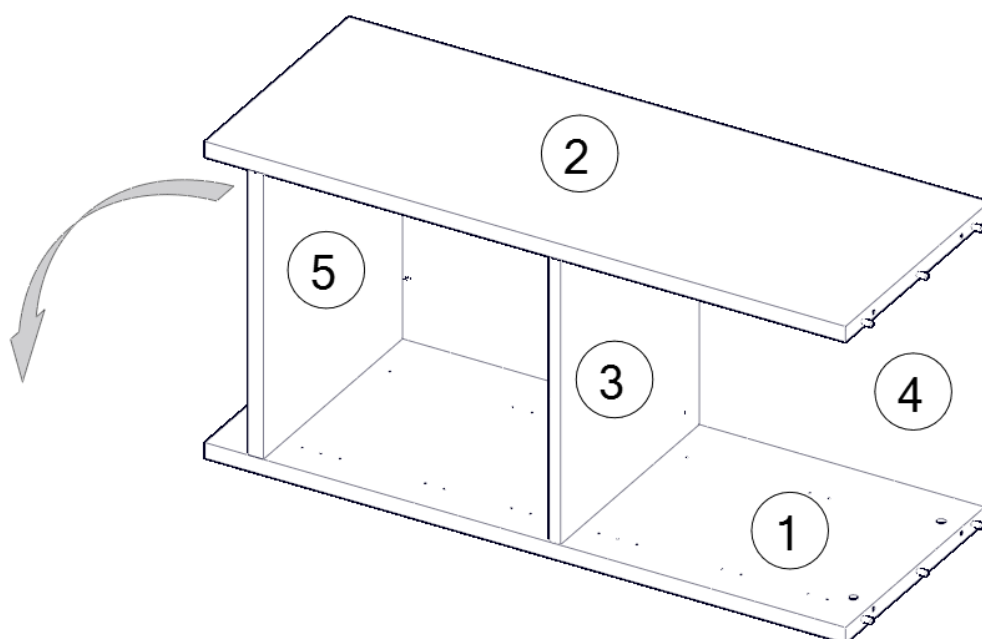
Step Eight

1. Insert the four plastic feet (D) into the holes provided.
2. Attach the angle (F) using one screw (G) . Tighten the screw (G) using the crosshead screwdriver.



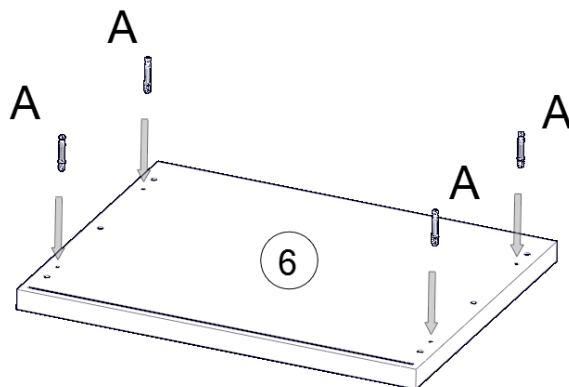
Step Nine

1. Turn the carcase of the unit onto its plastic feet.



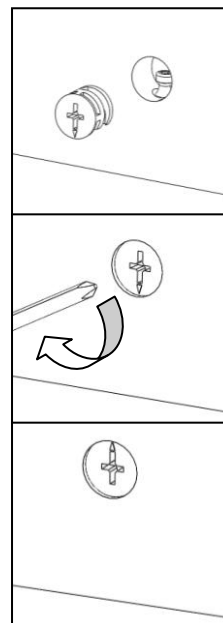
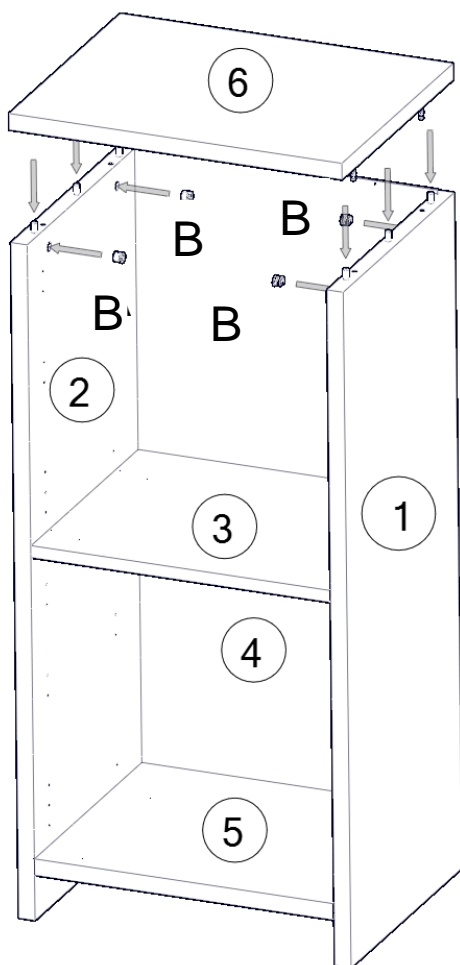
Step Ten

1. Take the top (6) and lay it on the clean and flat surface with the predrilling holes uppermost.
2. Screw the four connecting bolts (A) into the holes provided.



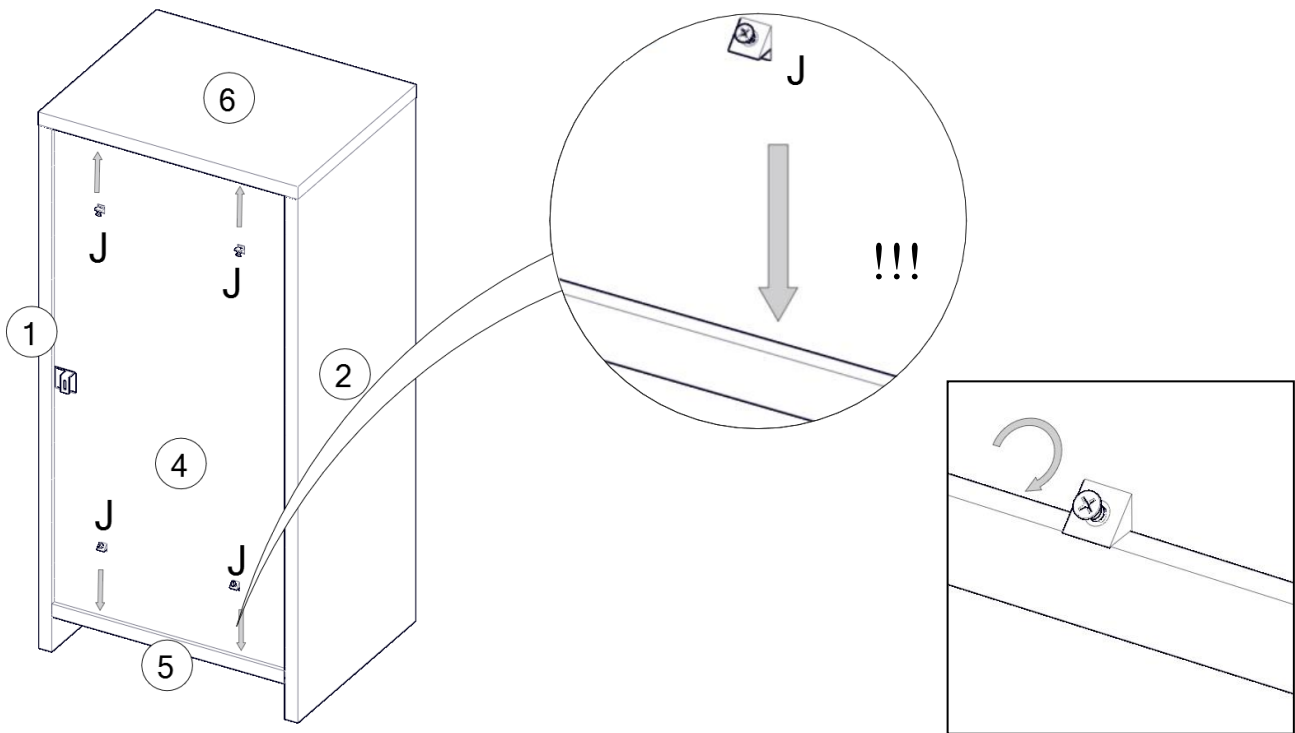
Step Eleven

1. Locate the top (6) onto the right side panel (1), and left side panel (2) as shown in the picture.
2. Insert the four camlocks (B) into the holes provided.
3. Tighten the four camlocks (B) using the crosshead screwdriver.



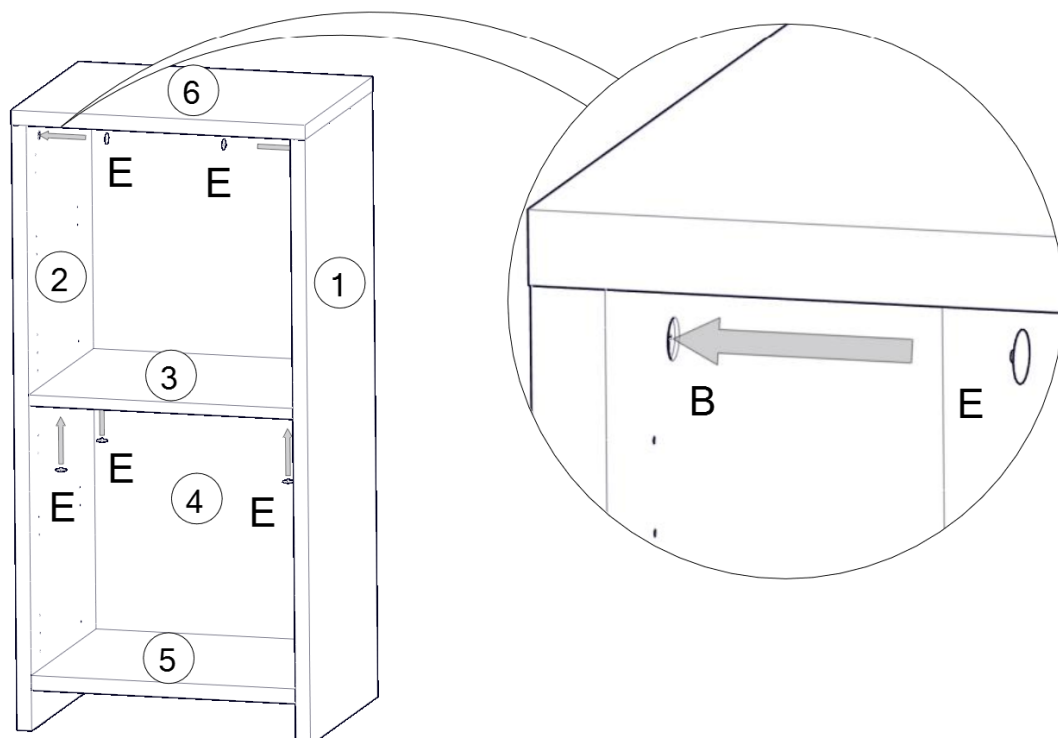
Step Twelve

1. Insert the four plastic back holder (J) into the top (6) and base (5).
2. Tighten the four plastic back holder (J) using the crosshead screwdriver.

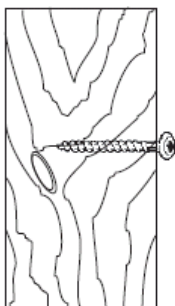


Step Thirteen

1. Insert the eight cover caps (E) into the holes in the camlocks (B).
The assembly is now complete.

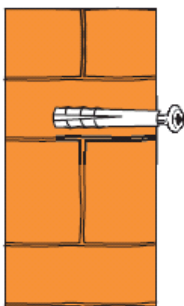


Wall fixing - if in doubt seek professional advice



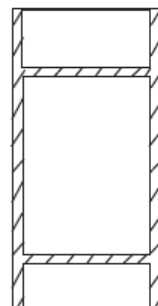
Wood

If fixing to wood make sure that it isn't chipboard as screws can easily pull away from the core structure



Brick or Masonry

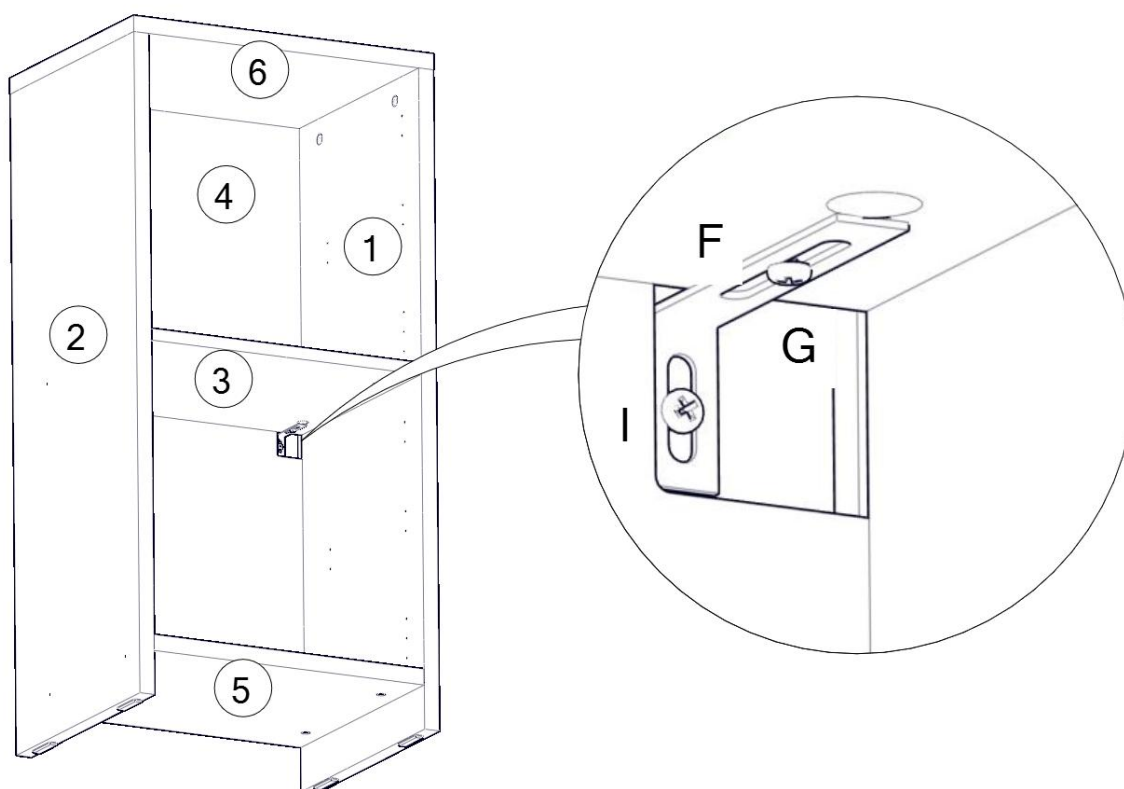
Use an appropriate wall plug provided you are sure your wall is sound



Cavity wall

Special toggle wall plugs are needed. Seek expert advice

-
1. With help, place the unit against the wall in its final location and mark the drill hole positions.
 2. Remove the unit and drill a 8mm diameter hole to a depth of 65mm in the marked positions.
 3. Insert wall plug supplied.
 4. With help, lift the unit up and aligning the holes, fix to the wall using the screws supplied and tighten fully.



Care and Maintenance

Wood Furniture

Wood displays different grain patterns depending on which way they cut - for example, the 'medullary ray' which can appear on oak furniture is a mark of good quality timber - these are just characteristics of the natural beauty of the wood. Some furniture is also deliberately aged and rustic.

Wood veneers also allow distinctive patterns to be created on flat surfaces, such as table tops and drawer fronts by the way the slivers are arranged.

All timber surfaces will change colour and mellow over time. New furniture will initially vary in shade from items that have been previously purchased.

How to care for your wood furniture

Furniture with a hard lacquer, wax polish or painted surface should be dusted with a dry cloth.

Waxed furniture will need to be given a coat of beeswax a couple of times a year to help maintain its luster.

Spray polishes are best avoided as they contain silicones which may spoil the furniture's surface by building up over time.

Make sure all surfaces are protected from heat and liquids by mats and coasters. Wipe up spills immediately and ensure that a mat or pad is placed under paper if you are writing.

Our furniture will endure most temperatures in the home but it is best to avoid placing furniture next to heat sources such as radiators or fires. Be particularly careful with solid wood as the lack of humidity caused by central heating can cause damage such as warping

Safety Instructions

General warnings:

Never drag furniture when moving it, always lift it.

Periodically check all fixings to ensure none have come loose and re-tighten where necessary.

Please take care when handling or moving the furniture as careless handling may cause damage or injury.

Furniture can be dangerous if incorrectly installed. Assembly should be carried out by a competent person. No liability will be accepted for damage or injury caused by incorrectly installed or assembled furniture.

Specific warning for heavy items:

It is recommended that before moving heavy objects to a new location they are completely dis-assembled to avoid personal injury or damage to the furniture. Please be careful to retain all fittings when doing this.

PLEASE KEEP THESE INSTRUCTIONS FOR FUTURE REFERENCE

John Lewis Partnership 171 Victoria Street London SW1E 5NN

www.johnlewis.com