

If you need this literature in an alternative format, please ask us.

You can find this information and lots more online at johnlewis.com

Here to help

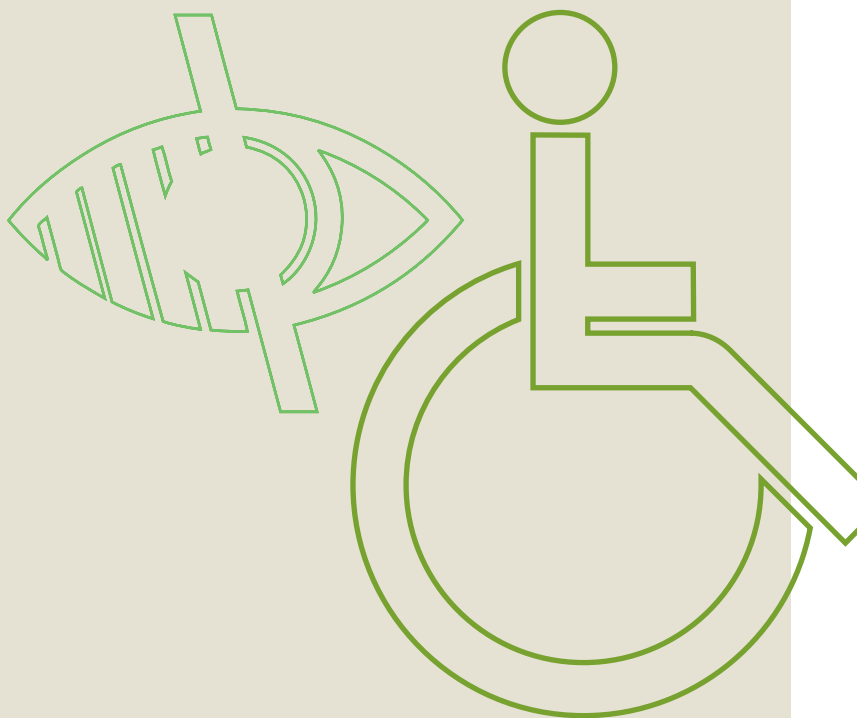
Easier shopping for disabled customers

Shopping hours

Monday	9.00–8.00
Tuesday	9.00–8.00
Wednesday	9.00–8.00
Thursday	9.00–8.00
Friday	9.00–8.00
Saturday	9.00–7.00
Sunday	11.00–5.00
(Sunday browsing)	10.30–11.00

John Lewis
Holmers Farm Way
Cressex Centre
High Wycombe HP12 4NW
Telephone 01494 462 666
Fax 01494 467 999
jl_high_wycombe@johnlewis.co.uk
johnlewis.com

John Lewis department stores SD24545 / 04.14



Making shopping easier

We aim to make shopping in our department stores easy and convenient for all our customers. The facilities for disabled customers vary a little from one John Lewis shop to another, depending on the limitations of some buildings. Here at John High Wycombe we offer the following:

Accessible parking

Spaces are reserved for disabled customers in the John Lewis car park near our two main entrances.

Wheelchairs for loan*

To check availability please ring in advance, or on the day of your visit ask one of our Partners for more details.

Hearing loops*

Please ask one of our Partners for details about mobile hearing loops.

Accessible toilets

On the First floor next to The Place to Eat.

Wide access lifts

Available with access to First floor.

Help with your shopping

Just ask one of our Partners if you need assistance.

No need to carry heavy shopping

Collect your purchases at the end of your visit from Customer collections on the Ground floor next to China and Glass or via our John Lewis car park entrance.

Standard delivery

When you spend over £50 we'll deliver for free. Spend less and standard delivery costs just £3. We'll deliver into the room of your choice, and remove any unwanted packaging for us to recycle responsibly.

Telephone shopping

Typetalk/Text Direct is available.
Please ring 18001 +01494 462 666

Large print or audio tape

Please ask one of our Partners if you need literature in alternative formats and we will do our best to provide it.

You can contact our branch in advance of your visit to check availability of services marked*. Please ring our main branch telephone number that is Typetalk/Text Direct enabled using prefix 18001 +01494 462 666

We always welcome your comments, so please do let us know if you've any questions or suggestions. For help or more information, please ask one of our Partners, or contact:

Manager Customer services
Holmers Farm Way
Cressex Centre
High Wycombe HP12 4NW

Telephone 01494 462 666
Textphone 18001 +01494 462 666 (via Typetalk)
Fax 01494 467999

jl_high_wycombe@johnlewis.co.uk
johnlewis.com