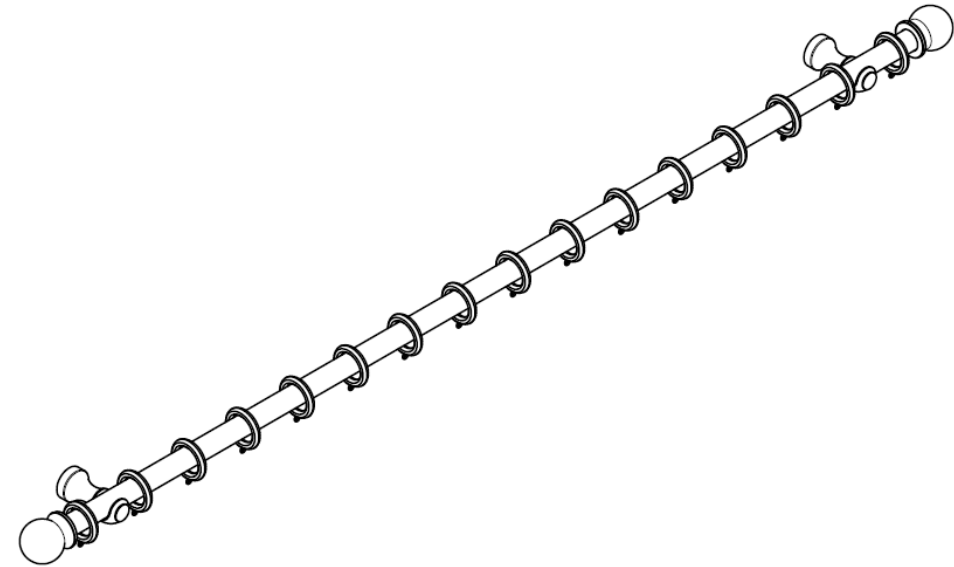


John Lewis

Instruction manual
Wooden Basics curtain
pole kit



Thank you for purchasing this product from John Lewis.

Please read the instructions and warnings carefully before use to ensure safe and satisfactory operation of this product.

Suitable for straight runs

35mm diameter.

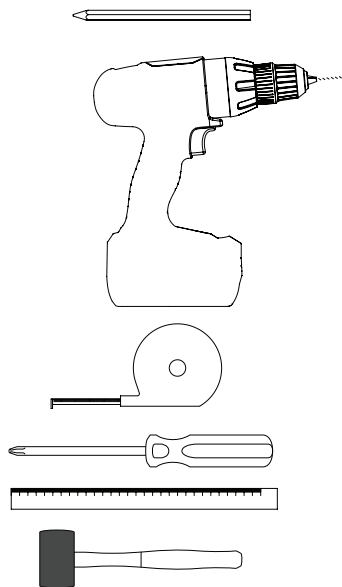
Lengths

150cm - Maximum curtain weight 3.6kg (8lb)

300cm - Maximum curtain weight 4.5kg (10lb)

Tools required

You will require the following tools: pencil, electric drill, Phillips screwdriver, measure, spirit level, fine-tooth saw, file.



Time to assemble 1 Hour

People to assemble



Warning

It is recommended that this product should only be installed by persons competent in DIY. Ensure the correct fixings are used for the appropriate wall type. If in doubt, consult a qualified person.

A guide to wall mounting and fixings

⚠ Warning Although we have provided fixings, different wall materials require different types of screws / fixings. Please ensure you use the correct screws / fixings for your type of walls and seek professional advice if you are not sure.

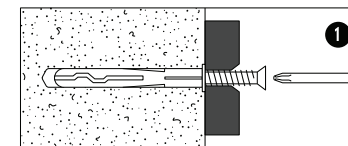
Failure of the product due to incorrect fixings is the responsibility of the installer.

Important When drilling into the walls always check that there are no hidden wires or pipes etc.

Take care when drilling on glazed tile surfaces in case the drill slips.

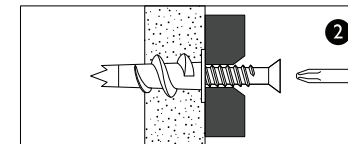
Types of walls

You can use one of the following types of wall plug if your walls are made of brick, breezeblock, concrete, stone or wood.



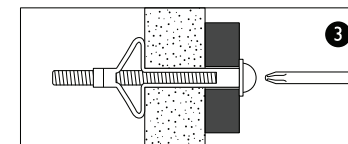
General Purpose wall plug

Generally aerated blocks should not be used to support heavy loads, use a specialist fitting in this case. For light loads, general – purpose wall plugs can be used.



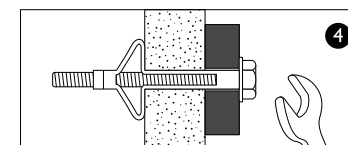
Plasterboard wall plug

For use when attaching light loads on to plasterboard partitions.



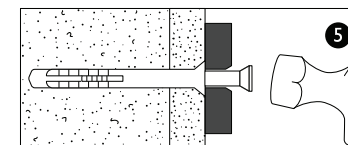
Cavity Fixing wall plug

For use with plasterboard partitions or hollow wooden doors.



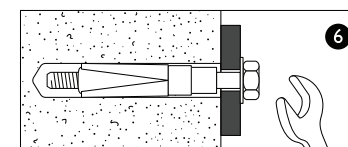
Cavity Fixing – Heavy Duty wall plug

For use when fitting or supporting heavy loads such as shelving, wall cabinets and coat racks.



Hammer Fixing wall plug

For use with walls stuck with plasterboard. The hammer fixing allows it to be fixed to the wall rather than the plasterboard. Always check the fixing is secure to the retaining wall.



Shield Anchor wall plug – Heavy loads

For use with heavier loads such as TV and Hi-Fi speakers and satellite dishes etc.

Pack contents: 150cm

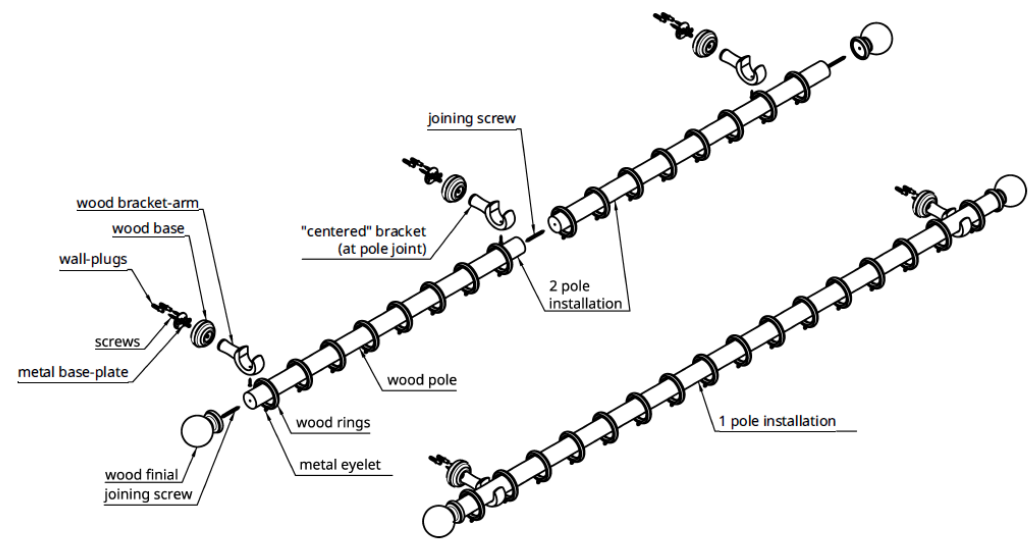
- 2x base plates
- 2x brackets
- 1x pole
- 16 x rings
- 2x fi nials
- screws and wall plugs

Packcontents: 300cm

- 3x base plates
- 3x brackets
- 2x poles
- 30x rings
- 2x finials
- 1x double ended joining screw, screws and wall

The pole may be fixed to a wall, with or without a pre-installed wooden batten. The screws and wall plugs supplied are only for fixing to masonry. If fixing to plaster or wooden batten, ensure the right size wall plugs and screws are used to suit the conditions.

When unpacking, take care to avoid damage to the poles and fittings. Remove the finials.



Step 1 Decide on the position of your curtain pole

Note. When the pole is to be made from two lengths joined by the connector, avoid putting the joint under pressure, making sure it is well supported at all times. Ideally, two people are required to handle a connected pole.

Position pole at least 8cm (3½ in) above the window frame.

When measuring the length of the pole required, allow for the fi nials and the bunching of the curtain at each end when fully opened.

Mark the position of each bracket approximately 10cm (4½ in) from the edge of the window. For poles longer than 150cm (59 in), the centre support bracket must be used, positioned half way between the end brackets.

Mark the line between the top edges of the brackets using a spirit level. For lengths that require two poles to be joined, locate the double-ended screw in each centre hole and twist the two lengths together until tight.

Step 2 Shortening pole

Measure the exact length of pole required and cut square using a hacksaw. Smooth the cut edges.

If the pole is made up of two lengths, joined by a connector, the two lengths must be equal so that the connector is at the middle point. To shorten, make sure you cut equal amounts off both lengths.

7mm

Step 3 Fixing base plates and brackets

Place each base plate on its positioning mark. Mark the screw holes only for each plate.

Drill the screw holes. For fixing to a pre-installed batten use the screws provided. For plaster or masonry use the right wall plugs and screws to suit the conditions. Fix the plates with the screws supplied.

Note. To ensure that the pole will be exactly level, you may initially drill and fix only one screw hole for each base plate. When you have made any final adjustments to the base plates for the exact position required, the remaining screw holes may then be drilled and fixed.

Screw each bracket on to its base plate. Position the bracket cup facing upwards. Note. When twisting the bracket to screw it on to the base plate, always hold it towards the base and never by the cup end.

Step 4 Fitting pole and rings

Slide the curtain rings on to the pole, allowing approximately one ring for every 10cm (4in). When there is a centre bracket, allow an equal number of rings on both sides. Keep one ring at each end outside the end bracket.

Place the pole on the brackets, making sure that the overhangs at each end are equal. When a centre support bracket is used, make sure the connector aligns with it.

Fix the pole to the brackets using the smaller wood screws provided. Slide a ring on to each overhang beyond the bracket.

Holding the pole firmly, push the finials on to the ends of the pole.

Step 5 Hanging curtains

Use standard header tape and hooks for your curtains. Hang the curtains by slipping the hooks through the eyelets of the rings.

7mm

Warnings!

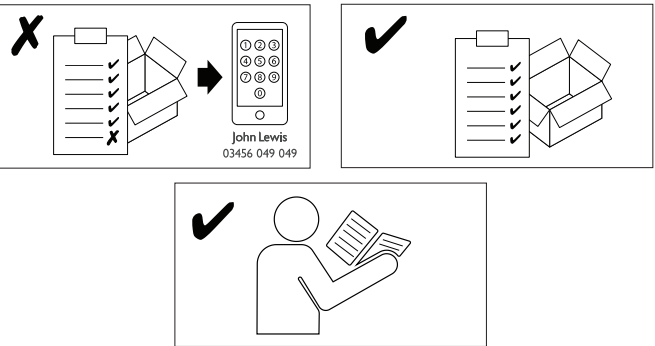
- ⚠ Small parts – choking hazard.
- ⚠ Keep small parts out of reach of children
- ⚠ Ensure the product is fully assembled as illustrated before use.

Do's

- ✓ Please read all safety warnings and installation information fully before installation.
- ✓ This product should be fitted in accordance with the manufacturers fitting instructions
- ✓ Check the pack to make sure you have all the parts listed.
- ✓ Take care when drilling on glazed tile surfaces in case the drill slips.
- ✓ Check that all screw and bolt assembly fittings are tightened and inspect on a regular basis.
- ✓ Please read our guide on wall mounting and fixing on the inside back cover.

Don'ts

- ✗ Do not over tighten screws or bolts.
- ✗ Do not use power tools to construct as over tightening and failure may occur.



Care and maintenance

Poles and fittings can be cleaned using a soft cloth and furniture polish. Please do not use any solvent based cleaners as this may damage the finish.

Please retain these instructions for future reference.

John Lewis Partnership
171 Victoria Street
London SW1E 5NN
johnlewis.com

Made in Malaysia- JL/HAR/EYE/0519

Batch code: