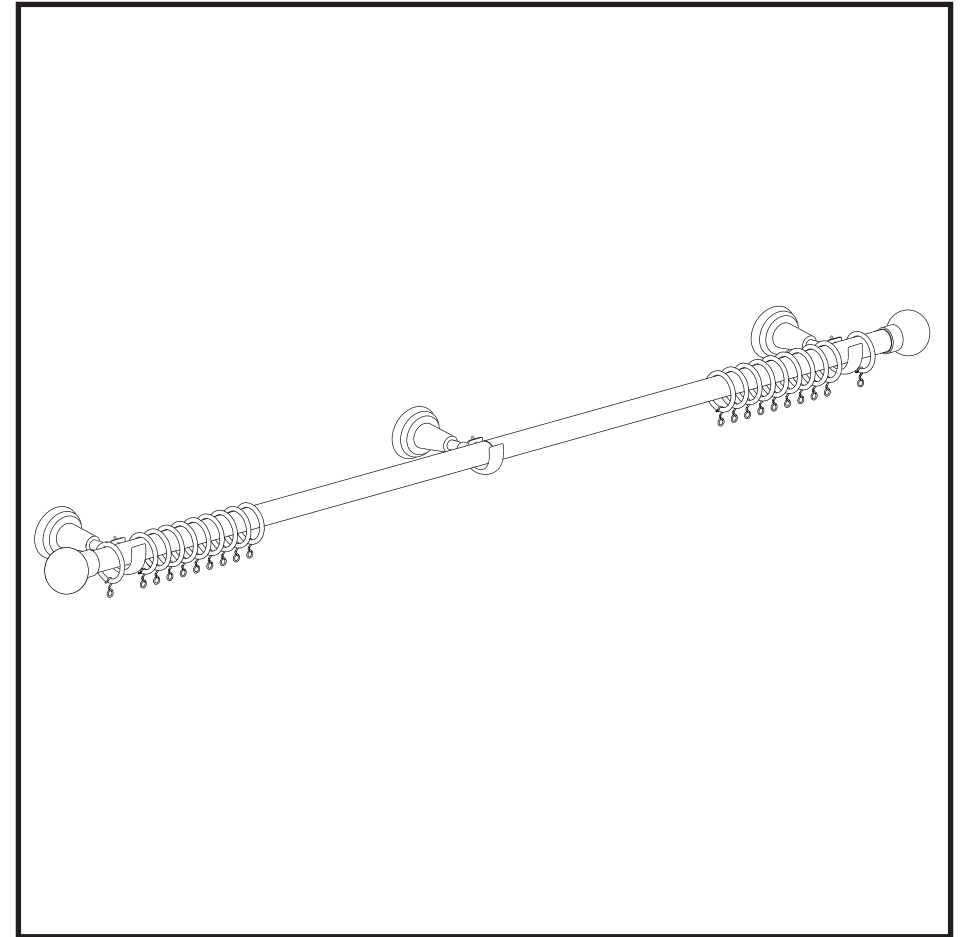


Please retain these instructions for future reference.



# METAL CURTAIN POLE

INSTRUCTION MANUAL

---

John Lewis Partnership  
171 Victoria Street  
London SW1E 5NN  
[johnlewis.com](http://johnlewis.com)

---

Made in China  
Batch code:

JOHN LEWIS  
& PARTNERS

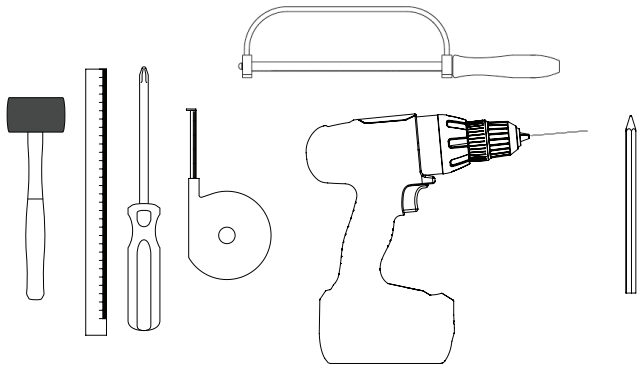
INTRODUCTION

Thank you for purchasing this curtain pole  
Please read the instructions carefully before  
use to ensure safe and satisfactory operation  
of this product.

It is recommended that this curtain pole should only be installed by persons competent in DIY. At John Lewis, we are committed to making great products possible. From our in-house Design Team, to our Buyers, we work together to bring great design to life. Our Product Technologists work collaboratively with our Buyers and suppliers to ensure the legality, safety and quality of the product we sell. We are all committed to designing and developing products to the highest industry standards.

We hope you are happy with your product and welcome any feedback or comments you may have.

TOOLS REQUIRED



PEOPLE TO  
ASSEMBLE

One person

TIME TO  
ASSEMBLE

1 Hour

WARNINGS

- ⚠ Small parts – choking hazard.
- ⚠ Keep small parts out of reach of children
- ⚠ Ensure the product is fully assembled as illustrated before use.

DO'S

- ✓ Please read all safety warnings and installation information fully before installation.
- ✓ This product should be fitted in accordance with the manufacturer's fitting instructions.
- ✓ Check the pack to make sure you have all the parts listed.
- ✓ Take care when drilling on glazed tile surfaces in case the drill slips.
- ✓ Check that all screw and bolt assembly fittings are tightened and inspected on a regular basis.
- ✓ Please read our guide on wall mounting and fixing on the inside back cover.

DONT'S

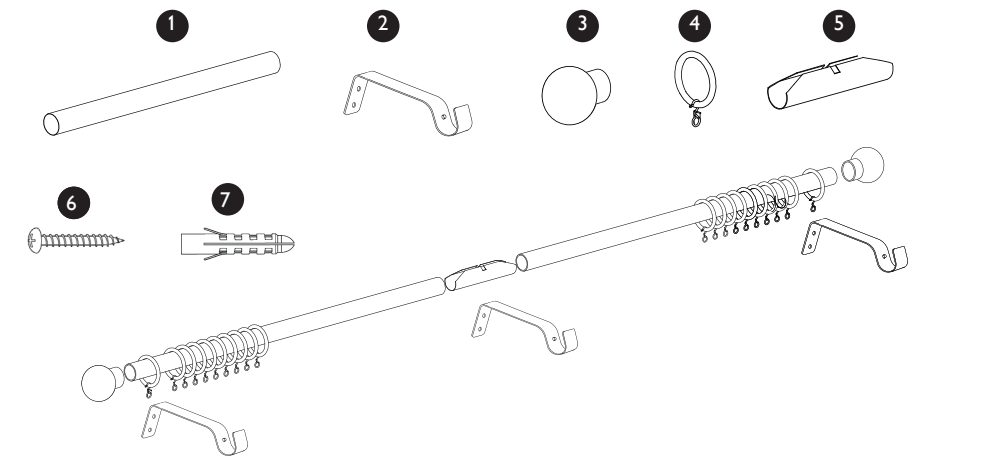
- ✗ Do not over tighten screws or bolts.
- ✗ Do not use power tools to construct as over tightening and failure may occur.

PRODUCT INFORMATION

CARING FOR  
YOUR PRODUCT

Poles and fittings can be cleaned using a soft cloth and furniture polish. Please do not use any solvent based cleaners as this may damage the finish.

PARTS LIST

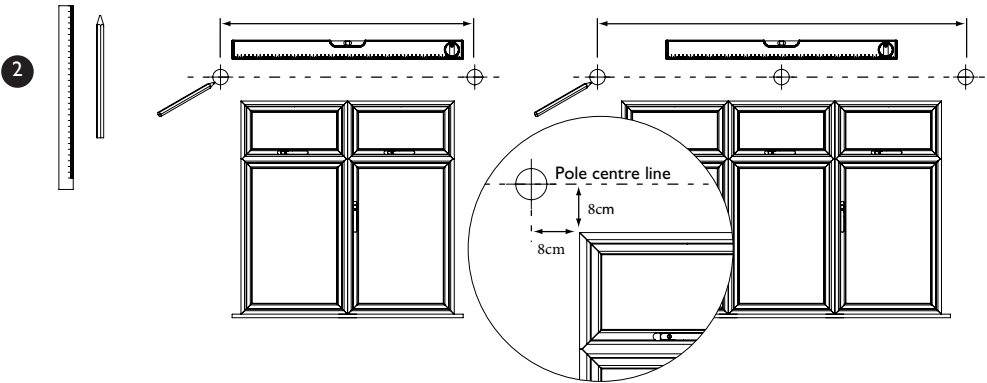


Code	Item	Quantity						Illustration
		1.2m	1.5m	1.8m	2.4m	3.0m	3.6m	
1	Pole	x1	x1	x1	x2	x2	x2	
2	Brackets	x2	x2	x2	x3	x3	x3	
3	Finials	x2	x2	x2	x2	x2	x2	
4	Rings	x12	x16	x18	x24	x30	x36	
5	Joiner	x0	x0	x0	x1	x1	x1	
6	Screws	x6	x6	x6	x9	x9	x9	
7	Wall Plugs	x6	x6	x6	x9	x9	x9	

Suitable for straight runs  
28mm Diameter Maximum Weights  
Length 300cm maximum curtain weight 15.0kg ( 33.06lb)  
Length 150cm maximum curtain weight 12.0kg ( 26.45lb)

POSITIONING

1.  
Decide on  
position
- Position at least 8cm (3 1/2 in) above the window frame. When measuring the length of the pole required, allow for the bunching of the curtain at each end when fully opened. Mark the position of the brackets. For poles longer than 150cm (60in) a mid bracket is necessary.
- ≤ 1.5m x 2 Brackets
- >3m x 3 Brackets



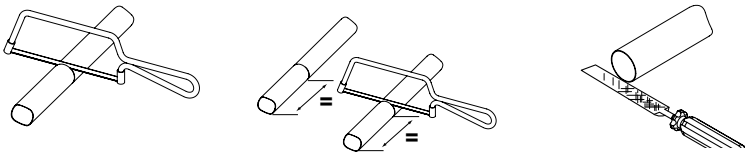
2.

Shortening and  
Lengthening the pole

- 1
- 5
- Measure the exact length of pole required and cut square using a hack saw. smooth the cut edges , inside and out

For longer runs, the pole may be made up of two lengths, joined by the connector. When cutting the two lengths should be equal so that the connector is at the middle point.

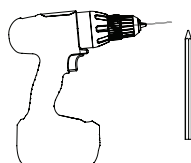
Make sure the machine-cut ends of the poles are used for the connector. Push the joiner into the pole ends and push the poles together.



3.

### Fixing the brackets

6 2 7

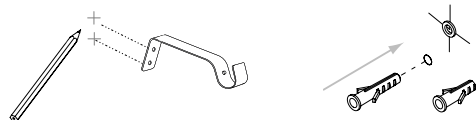


Mark the drill positions for each bracket.

Use a bit to drill the two holes.

It is important that the holes are positioned vertically one above the other.

Insert plugs, screw each bracket into position.



4.

### Fitting rings and Pole

1 2 4

Slide the curtain rings onto the pole, allowing approximately one ring for every 10cm (4in).

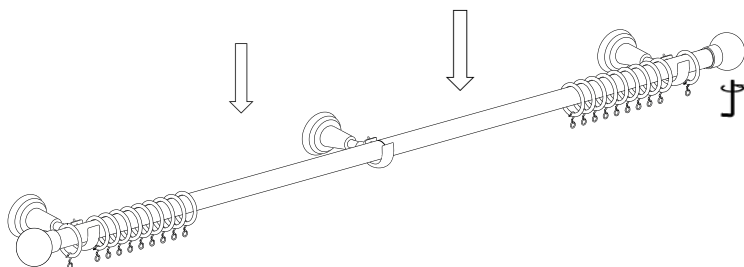
Keep aside two rings, one for outside of each end of the bracket.

Place the pole on the brackets, making sure that the overhangs at each end are equal if the pole is made of two connected lengths, the mid bracket should cover the join.

Tighten the locking screw on each bracket.

Slide a ring on to each overhang beyond the bracket.

Attach the finials by pushing them into position and tightening the grub-screws where applicable.

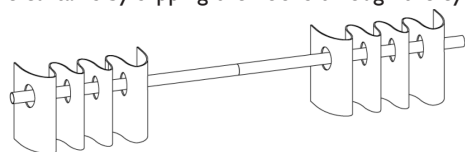


5.

### Hanging the curtains

4

Hang the curtains by slipping the hooks through the eyelets of the rings.



## GUIDE TO WALL MOUNTING & FIXINGS

### KEY INFORMATION



**Warning** Although we have provided fixings, different wall materials require different types of screws / fixings. Please ensure you use the correct screws / fixings for your type of walls and seek professional advice if you are not sure.

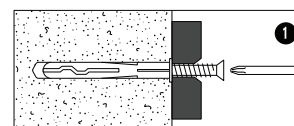
Failure of the product due to incorrect fixings is the responsibility of the installer.

Important When drilling into the walls always check that there are no hidden wires or pipes etc.

Take care when drilling on glazed tile surfaces in case the drill slips.

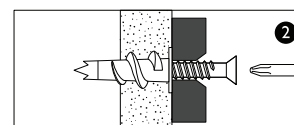
### FIXINGS

You can use one of the following types of wall plug if your walls are made of brick, breezeblock, concrete, stone or wood.



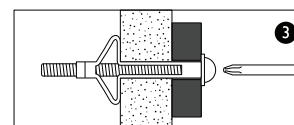
#### General Purpose wall plug

Generally aerated blocks should not be used to support heavy loads, use a specialist fitting in this case. For light loads, general – purpose wall plugs can be used.



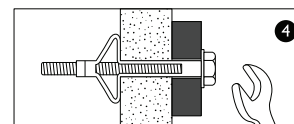
#### Plasterboard wall plug

For use when attaching light loads on to plasterboard partitions.



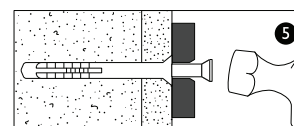
#### Cavity Fixing wall plug

For use with plasterboard partitions or hollow wooden doors.



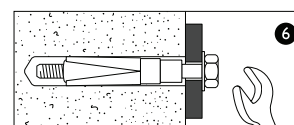
#### Cavity Fixing – Heavy Duty wall plug

For use when fitting or supporting heavy loads such as shelving, wall cabinets and coat racks.



#### Hammer Fixing wall plug

For use with walls stuck with plasterboard. The hammer fixing allows it to be fixed to the wall rather than the plasterboard. Always check the fixing is secure to the retaining wall.



#### Shield Anchor wall plug – Heavy loads

For use with heavier loads such as TV and Hi-Fi speakers and satellite dishes etc.