

正面

290mm

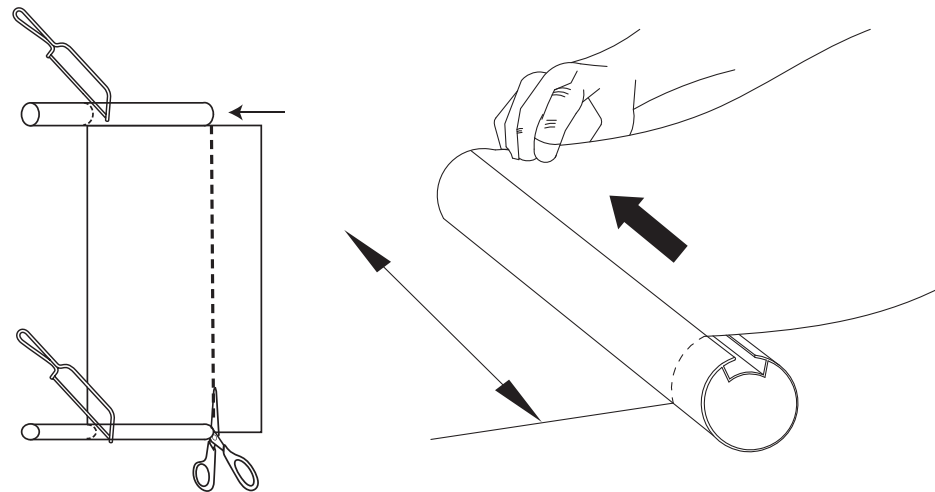
7mm

7mm

7mm

## 7. Reducing the width

Unroll the blind and place on a flat, clean surface. The fabric can be slid from the center tube. Cut the desired amount using a hack saw to the center tube and use scissors for the fabric. Taking care to maintain a straight edge.



## 8. Operating the blind

For a conventional roller blind, in order to lower the blind, pull the front chain with a steady pressure. If it is reverse rolled, the opposite is true.

## 9. Care instructions

The fabric may be dusted using a dry cloth. To clean , wipe with a barely damp cloth.

The product is maintenance free however we recommend that regular visual checks are completed to ensure that no components have been damaged, which could result in operating difficulties and/ or cause a safety risk.

Please retain these instructions for future reference.

John Lewis Partnership  
171 Victoria Street  
London SW1E 5NN  
johnlewis.com

Made in China

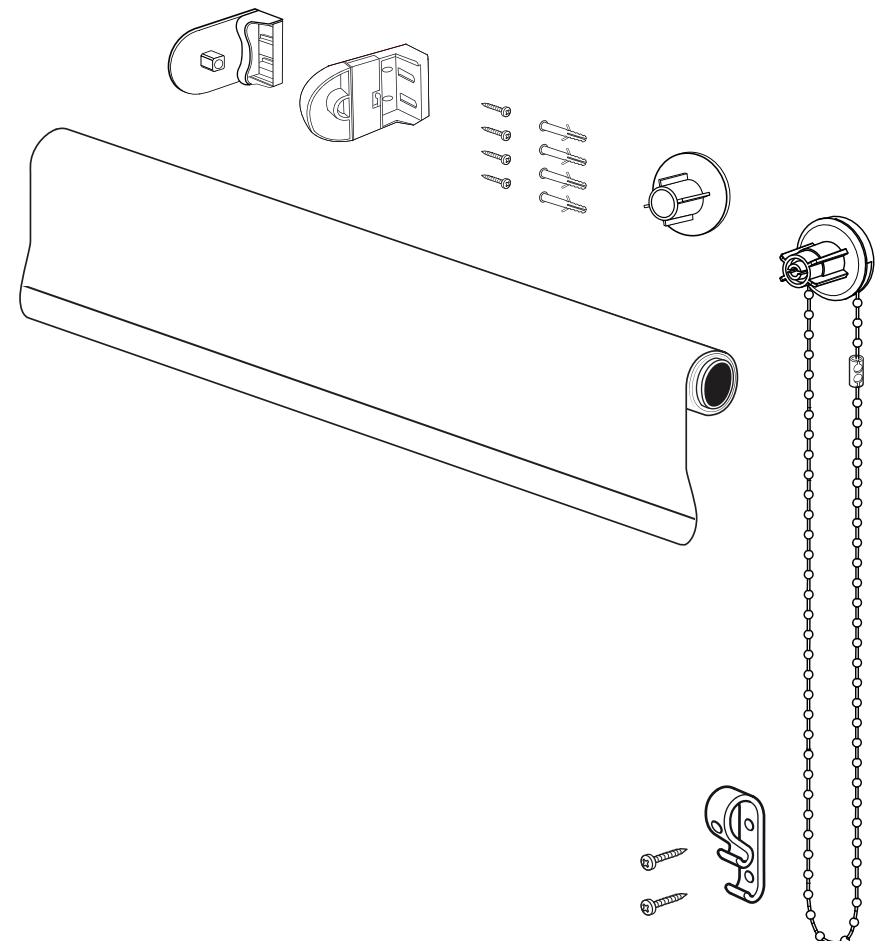
Batch Code :

6

John Lewis

User manual

Roller blind



1

反面

290mm

Thank you for purchasing this roller blind. Please read the instructions carefully before use to ensure safe and satisfactory operation of this product. It is recommend that this blind should only be installed by persons competent in DIY.

## Warnings!

Please read all safety warnings and installation information fully before installation.

Young children can be strangled by loops in pull cords, chains, tapes and inner cords that operate the product.

To avoid strangulation and entanglement, keep cords out of the reach of young children. Cords may become wrapped around a child's neck.

Move beds, cots and furniture away from window covering cords.

Do not tie cords together. Make sure cords do not twist and create a loop.

The safety clips should be positioned high enough to be out of reach of small children yet accessible to adults.

All safety clips for blinds need to be fixed to a solid surface using a screw and fixing suitable for the wall or surface material. These items should not be glued or stuck in place.

The head rail shall not be installed less than 1.5m from the floor.

For further information go to: [www.makeitsafe.org.uk](http://www.makeitsafe.org.uk)

Keep out of the reach of young children.

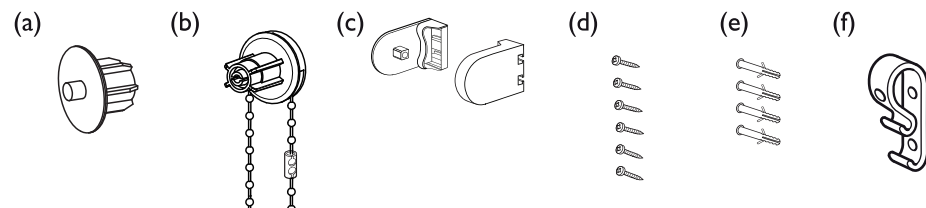
Small parts - choking hazard.



## Parts list

Please check the contents :

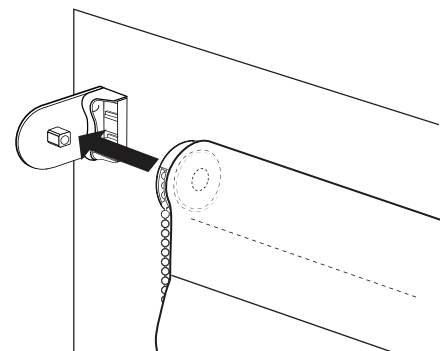
- 1 Pin End (a)
- 1 Chain operated side control (b)
- 1 Pair of fixing brackets (c)
- 6 Screws (d)
- 4 Wall plugs (e)
- 1 Safety clip (f)



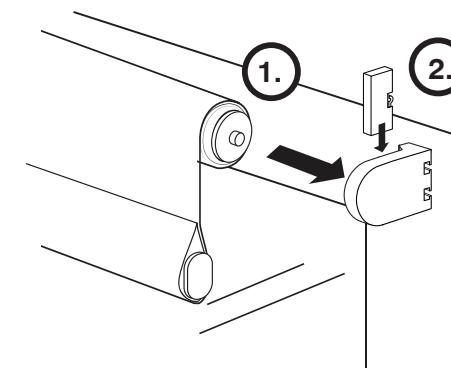
**Please note:** Additional fasteners other than those sent with your blind may be required depending on the mounting surface. Wallboard and plaster require the use of anchors such as expansion or toggle bolts. Brick, tile or stone need special plugs and drill bits. Remember to always pre-drill holes in wood to avoid splitting.

## 5. Installing the blind

A.



B.



A. Once the brackets are installed offer the chain control end (b) to bracket.

B. With the chain end in place, locate the pin to the bracket and ensuring both ends are fixed in place , slot in pin (B2) to secure.

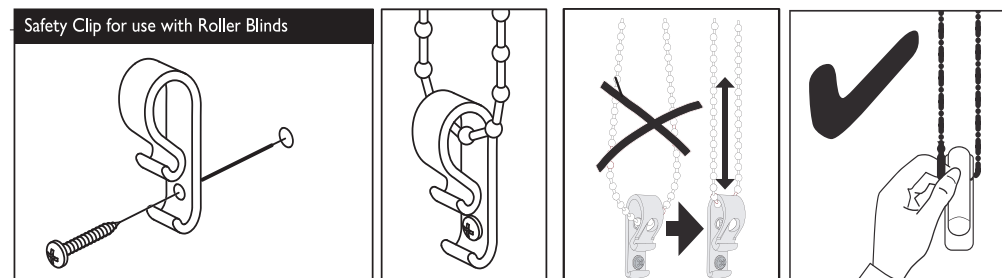
## 6. Fixing the safety device

The safety device must be installed at the maximum distance possible from the control mechanism to prevent looped chain becoming slack.

Place the safety device on the wall and mark the position of the screw hole.

Drill holes using a suitable drill bit.

Place device into position ensuring the chain is fully taut. Screw into position ensuring device is fully closed. Test the chain moves freely though the device.



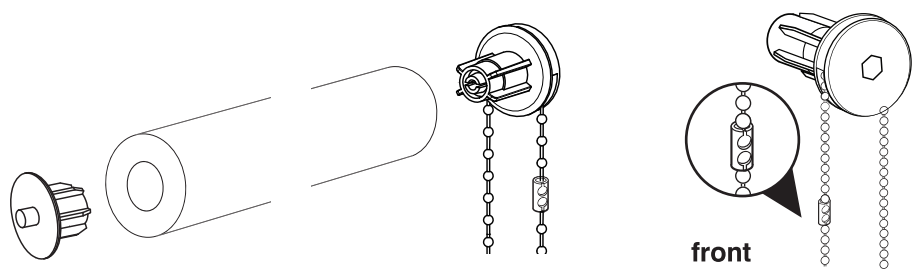
Children can strangle if a safety device is not installed. Always use a safety device to keep cords or chains out of reach of children.

正面

145mm

3. Side control system

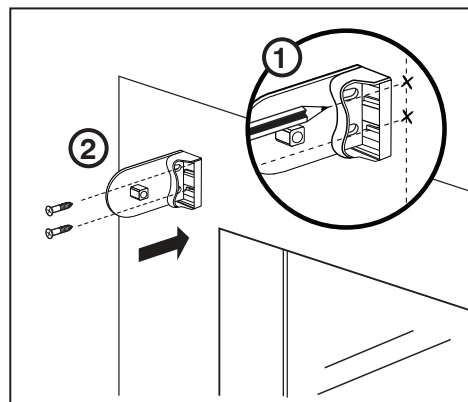
When installing the side control system it is essential to position the chain connector correctly. Position the connector at the top of the chain at the front of the control system, for both left and right hand insertion into the tube. Decide which end of the blind you want the control. Push the chain operated unit firmly into the roller tube. Repeat the other end with the pin end unit.



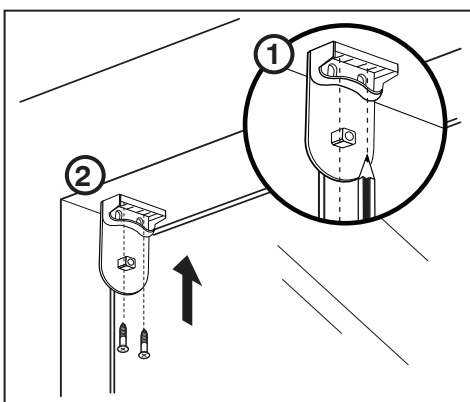
4. Installing the brackets

A. The brackets are designed for face or top fixing to frame, wall or ceiling.

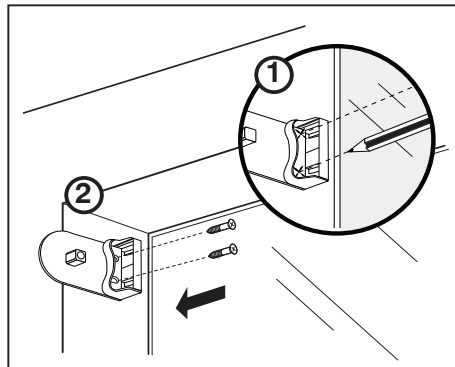
FACE FITTING



TOP RECESS



SIDE RECESS



B. Using a tape measure and level, whilst using the wall bracket as a guide, mark the position of the brackets on the wall as shown.

反面

145mm

210mm

**Video instructions**

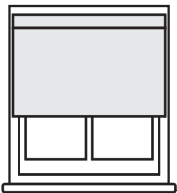
Scan the QR code to link to our online videos that guide you in getting a perfect fit for a Venetian or Roller blind. Alternatively follow the link [johnlewis.com/blindassembly](http://johnlewis.com/blindassembly)



**Assembly**

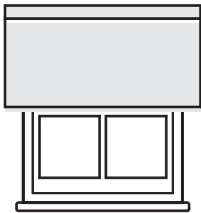
**1. Positioning the blind**

**Inside the recess**



**A.** Decide on the position of the blind so that it will be clear of any latches and fixtures.

**Outside the recess**



**B.** Decide on the position of the blind so that it overlaps on both sides equally. At least 5cm.

**2. Assembling the blind**

**Note** that the face of the fabric has a protective finish that is shinier than the "back" . On some finishes of the blind, the protective coating is not so obvious therefore all the blinds are packed reverse wound onto the roller with the face of the fabric outermost. Blinds are normally hung so that the fabric is drawn down from the back of the roller next to window, with the face of the fabric towards the room. This method helps reduce light pollution further. In order to do this , unroll the blind as packed. Then roll then fabric back in the opposite direction, taking great care that the fabric remains absolutely straight on the tube.

