

## Recommended bulb

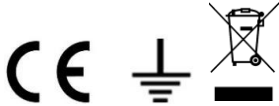
1 x 230W max R7 eco halogen linear (bulb not included)

1x 33W max G9 (bulb not included)


## Specifications

Voltage: 220~240V,50/60Hz

Weight: 1.5kg



Please retain these instructions for future reference.

This symbol  indicates that this product should not be treated as normal household waste and it should be recycled. John Lewis do not operate instore take back, but as members of the Distributor Take Back scheme have funded the development and upgrade of recycling facilities across the UK. Please take it to your nearest collection facility or for further details contact your local council or visit [www.recycle-more.co.uk](http://www.recycle-more.co.uk).

We have taken great care to ensure that this product reaches you in perfect condition. However, should any parts be damaged or missing please e-mail [lightingparts@JLPspares.co.uk](mailto:lightingparts@JLPspares.co.uk)

## Trouble Shooting:

Why is the light not working when switched on?

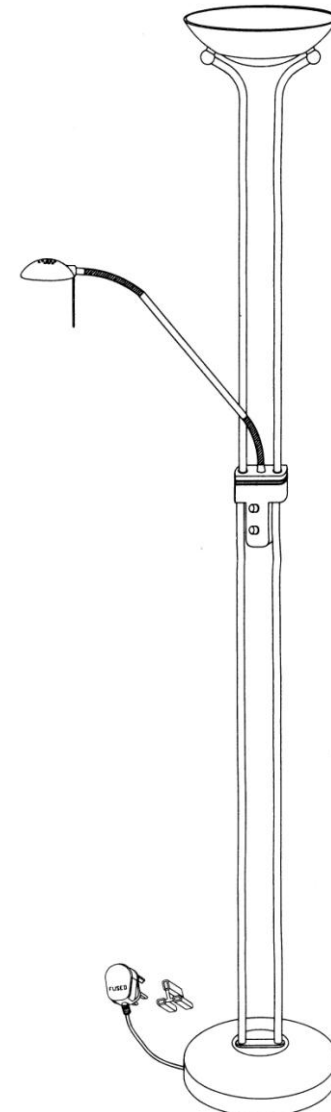
Check your power supply is switched on  
Turn off light and check that the bulbs are inserted correctly  
Check the bulb is still in working order.

John Lewis Partnership  
171 Victoria Street  
London SW1E 5NN  
[johnlewis.com](http://johnlewis.com)

Made in China

# John Lewis

## User manual Zella floor light



## Zella Floor Lamp

Thank you for purchasing this Zella floor lamp. Please read the instructions and warnings carefully before use to ensure safe and satisfactory operation of this product.

### Warnings

This product should be kept away from combustible materials (eg. curtains)

It is advisable not to leave a lit lamp unattended.

Always use the correct type and wattage bulb. Never exceed the wattage stated.

When changing a bulb, always switch off at the mains and allow the bulb to cool down before handling.

Dispose of used bulbs carefully.

The bulb and surrounding parts can become extremely hot during use.

This product uses halogen lamps; please do not touch with bare fingers.

This lamp is supplied with safety glass shields; please ensure these are in place before use.

Please ensure the stated minimum distance is maintained at all times – the minimum distance symbol is shown here.

If the external cable or cord of this luminaire is damaged it shall be exclusively replaced by the manufacturer or his service agents with a new external cable or cord.

### Assembly

Please assemble as per the below diagrams. Please read the instructions carefully before use to ensure safe and satisfactory operation of this product. Please keep these instructions for future reference.

### Care instructions

We recommend cleaning with a soft dry cloth. Do not use abrasive materials as these will damage the finish.

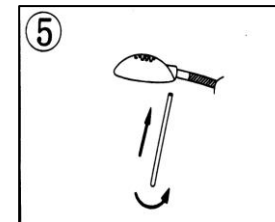
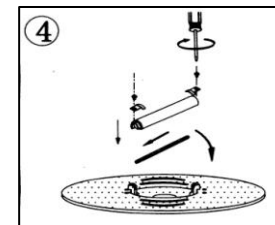
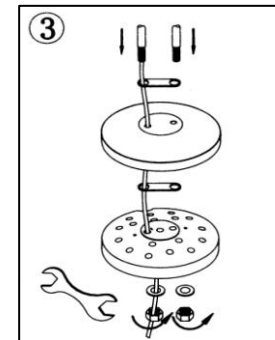
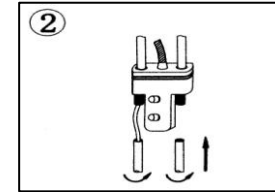
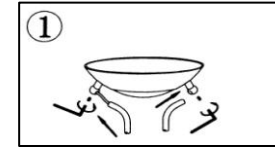
Indoor use only.

Replace bulbs from John Lewis or established brand of the same type and compatibility.

### Parts list

- 1 x Allen key
- 1 x rod lever
- 1 x spanner
- 2 x grub screws

### Assembly



Ensure the mains electricity supply switched off at the fuse board.

#### Step 1

Carefully remove the floor lamp from the box and lay out on a flat surface. Remove black bushes from the end of the metal tube, then insert the end of tube into the ball joints. Tighten grub screws with Allen key provided.

#### Step 2

Remove black bushes from end of tubes then screw end of tube into centre body section. Screw the other tube with the cable going through into the other side of the centre body section.

#### Step 3

Pull up the base and remove the plastic bag, then insert the 2 tubes with the thread on the end through the holes in the base with the 2 holes spacer bracket, then tighten the washers and nuts with tool provided.

#### Step 4

Insert halogen bulb into the uplighter, then gently fit glass protector.

#### Step 5

Screw rod lever to reading lamp section for adjustment as the lamp can become hot.

Switch on the electricity supply at the fuse board. The maximum power indicated must not be exceeded.