

# Opus mirror

Thank you for purchasing this product. Please read the instructions and warnings carefully before use to ensure safe and satisfactory operation of this product.

## Instructions for use

Note: We recommend that this product should only be installed by persons competent in DIY.

1. Measure the distance between the centre of the two slotted holes on rear of the mirror. Note: the mirror can be hung portrait or landscape.
2. Transfer the dimensions to the wall at the appropriate height, ensuring that the marks for fixing holes are level.
3. Using an appropriate drill for either stud or brick wall; drill the two fixing holes.
4. Insert the wall plugs. Note: The wall plugs provided are suitable for solid stone or brick walls. For other wall types (e.g hollow plasterboard) use appropriate wall plugs. If in doubt, consult a qualified person.
5. Screw in the wall screws.
6. Hang the mirror on the wall screws making sure it is secure and level.

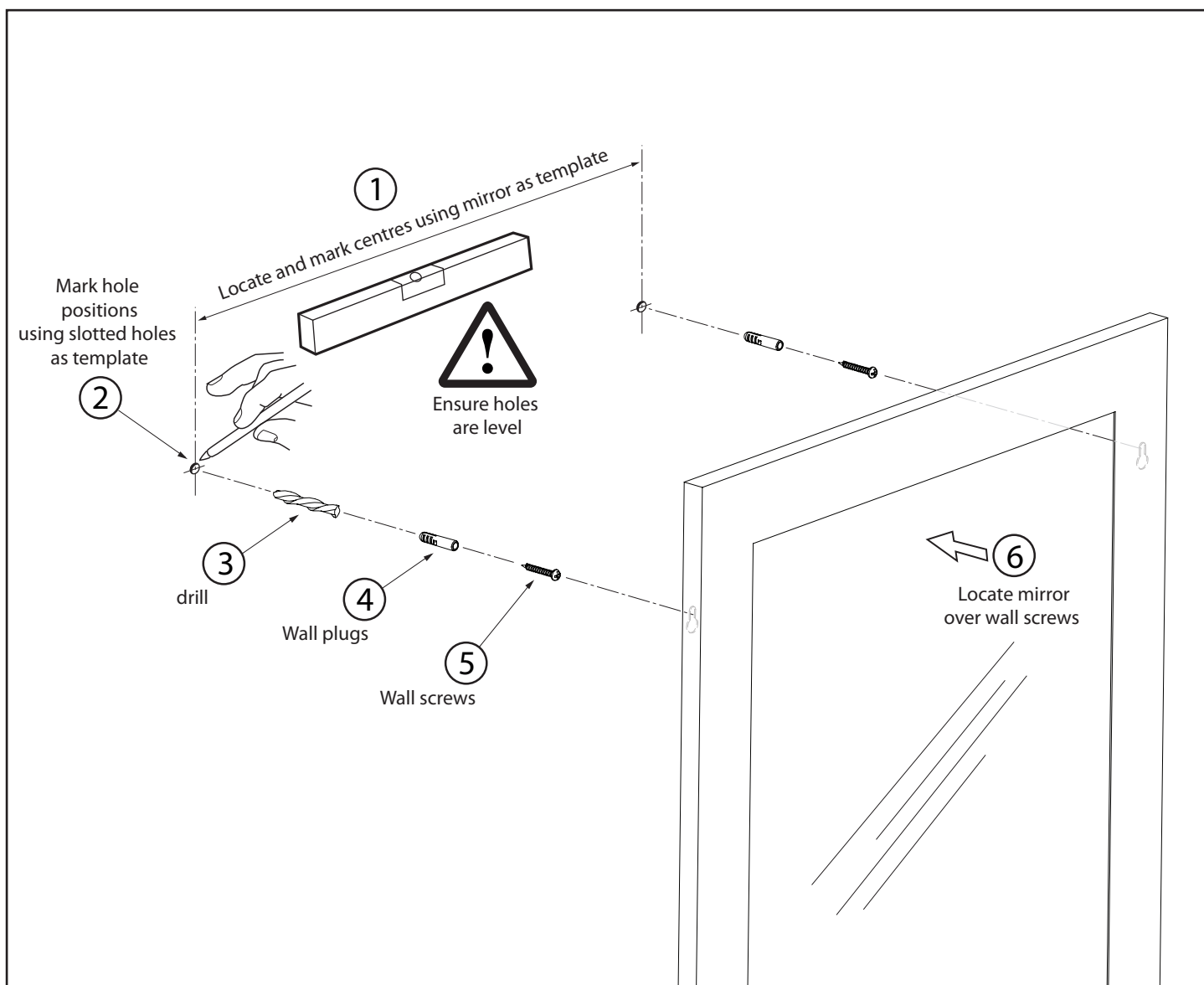
## Care and maintenance

1. Only clean the mirror with a soft damp cloth.
2. Do not use any abrasive cleaners or solvents when cleaning this product.
3. Do not allow any liquids to stand on any part of the mirror.

## Warnings

1. Do not subject the mirror to extremes of temperature or place hot or cold items against or in close proximity to the glass surfaces.
2. Do not strike the glass with hard or pointed items.
3. If glass is chipped or broken it should no longer be used for safety reasons.

Please retain this information leaflet for future reference.



Material composition: mirrored glass, stainless steel frame (polished finish)

John Lewis Partnership, 171 Victoria Street, London SW1E 5NN. [www.johnlewis.com](http://www.johnlewis.com)

May 09