

Recommended bulb

1 x 40W

SES Candle

or

1 x 3W

SES LED Energy Efficient Candle

or

1 x 28W

SES Eco Halogen Candle

When changing a bulb, always switch off at the mains and allow the bulb to cool before handling. Dispose of used bulbs carefully. Do not exceed the wattage stated or use a different shape bulb from that indicated on the fitting.

For use

Finish - We recommend cleaning with a soft dry cloth. Do not use abrasive materials as these will damage the finish.

Glass parts - Remove and wash in warm water or just use a damp cloth. Do not use abrasive materials as these will damage the finish.

Specification


Maximum wattage: 40W E14 candle

Voltage: 240V, 50Hz

IP Rating: 20

Weight: 1.19kg



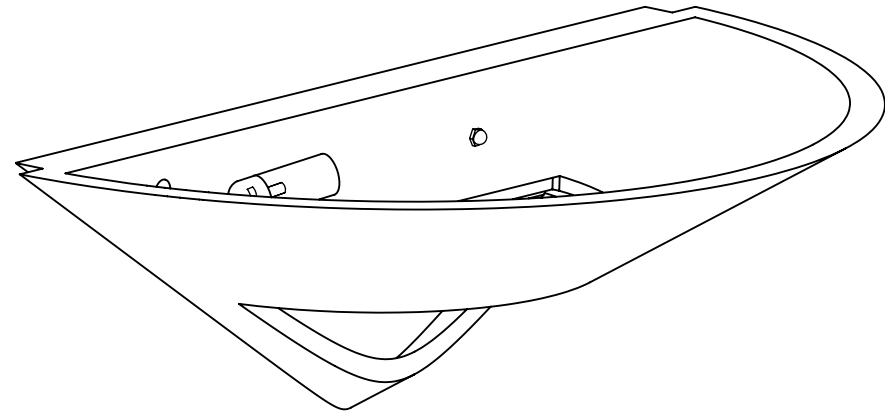
This symbol  indicates that this product should not be treated as normal household waste and it should be recycled. John Lewis do not operate instore take back, but as members of the Distributor Trade Back scheme have funded the development and upgrade of recycling facilities across the UK. Please take it to your nearest collection facility or for further details contact your local council or visit www.recycle-more.co.uk.

We have taken great care to ensure that this product reaches you in perfect condition. However, should any parts be damaged or missing please contact our Product Helpline on (01202) 690945.

John Lewis Partnership
171 Victoria Street
London SW1E 5NN
johnlewis.com


Made in China

19/12/18



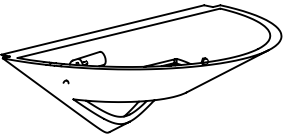


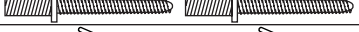

Thank you for purchasing this Tessa Wall Light. Please read the instructions carefully before use to ensure safe and satisfactory operation of this product. Please keep these instructions for future reference.

Warnings!

 **This product is Class II (double insulated) and must not be earthed. If there are any incoming earth cables, they must be joined together and well insulated with good quality insulation tape. This is to ensure earth continuity throughout your property.**

Please read these instructions carefully before commencing any work. It is recommended that this fitting is installed by a qualified electrician.
Install in accordance with the IEE Wiring regulations and the Building Regulations.
To prevent electrocution switch off at mains supply before installing or maintaining this fitting. Ensure other persons cannot restore the electrical supply without your knowledge. If you are in any doubt, please consult a qualified electrician.
This light fitting should be connected to a 5 amp fused circuit.
If replacing an existing fitting, make a note of the connections.
This product is suitable for dimming.

Parts List

Light Fitting		1	Nuts		2
			Washers		2
			Bolts		2
			Wall plugs		2

Installation Instructions

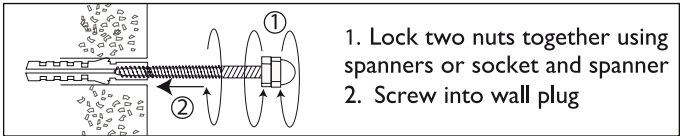
Carefully unpack the carton, making sure all the parts are present before assembly.
Make sure you have the following items which are required to install this light fitting:
Small electrical screwdriver, cross head screwdriver & insulation tape.
The installation of this fitting will be much easier with the help of an assistant.

Step 1

Before removing the existing fitting, **carefully note the position of each set of wires.** Where a ring/loop circuit exists there will be a fourth set of wires (usually red) that are not connected to the L, N, or E. of the fitting. This circuit must be kept together in the 4th terminal of the connection block, and insulated from the fitting and the other wires. **The ring/loop will remain live unless isolated at the mains or circuit breaker regardless of the position of the wall switch.**

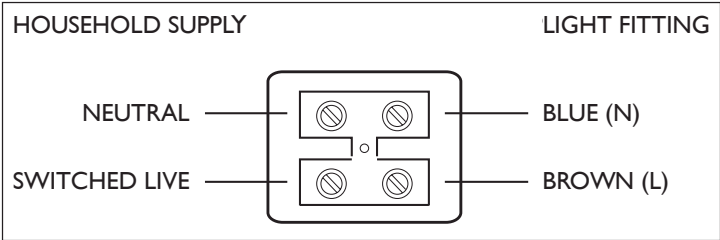
Step 2

Check hole spacings on rear of product (approx 215mm). Drill out holes in wall, ensuring supply wiring is in the centre of fixing hole spacing then fit wall plugs. The wall plugs supplied are only suitable for masonry. Obtain suitable fixings for plasterboard. Screw in special fixing screws as shown in diagram. Take care not to damage concealed wiring and pipes.



Step 3

Having identified the household wiring from your existing light fitting, connect to the connection block inside the product in the following way:

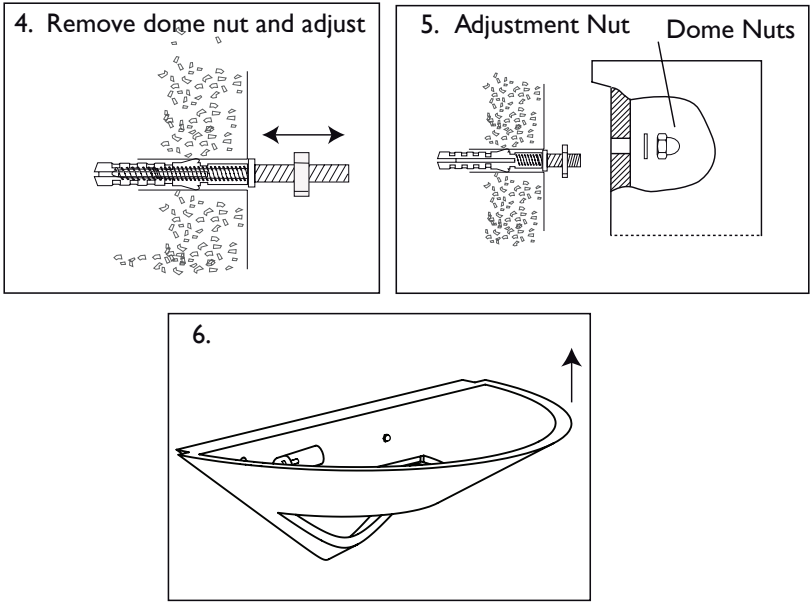


Check that.....

You have correctly identified the house wires. The connections are tight.
No loose strands have been left out of the connection block.
Cover is securely refitted.

Step 4

Attach the product to the fixing screws. Use the adjustment nut to ensure the product sits flush against the wall with the terminal box in the recess (see diagram 4). Add rubber washers and secure with dome nuts (see diagram 5) - Do not over tighten. Ensure the wall back is fitted in the correct orientation (see diagram 6).



Step 5

Replace fuse or circuit breaker and switch on. Your light is now ready for use.