

Pure glass shelf

Thank you for purchasing this product. Please read the instructions and warnings carefully beforehand to ensure safe and satisfactory use of this product.

Fitting instructions

You will need a power drill, 6mm masonry drill bit, medium slot-head screwdriver, tape measure, spirit level and a pencil to install this product. Ensure the wall surface is of suitable strength and construction.

Note: The wall plugs provided are suitable for solid stone or brick walls.

For other wall types (e.g. hollow plasterboard) use appropriate wall plugs and drill bit. If in doubt, consult a qualified person.

Care and safety

Wear suitable eye protection when drilling.

When using power tools near water - for added protection against electric shock the use of a residual current device is advised.

Beware of hidden pipes or power cables.

Take care when drilling on glazed tile surfaces in case the drill slips.

This product contains a 6mm thick toughened glass shelf. The load on the shelf should be evenly distributed (Max 5kgs recommended).

If glass component is chipped or broken it should be replaced.

Please contact John Lewis with regard to obtaining replacement, quoting the product name (e.g. Pure Glass Shelf).

Warnings

This product should be fitted in accordance with the manufacturer's fitting instructions.

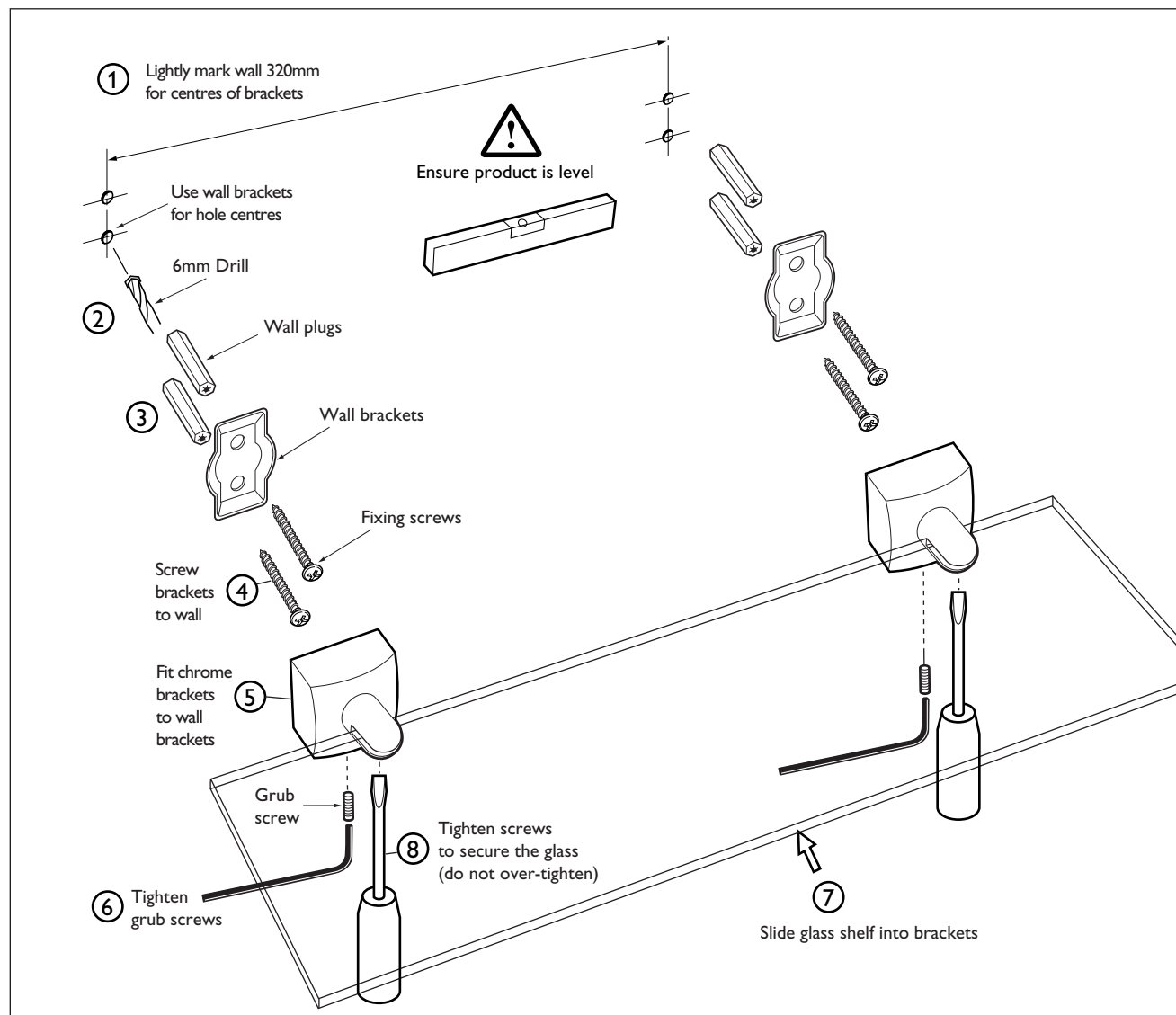
Do not place very hot or very cold items onto the glass surface unless adequate insulation material is used.

Do not sit or stand on horizontal glass surface.

Cleaning

Clean metal and glass parts with a soft cloth or chamois leather moistened with water, or for stubborn marks with a mild solution of water and washing up liquid. Do not use scourers or cleaning agents containing abrasives such as powder cleaners, as these will damage the surface finishes.

Please retain this information leaflet for future reference.



Material composition: Diecast zinc / Glass / Chrome plate.

Ref: Pur GS 250912