

Smoked Duo/Deco Mirror

Thank you for purchasing this product. Please read the instructions and warnings carefully beforehand to ensure safe and satisfactory use of this product. It is recommended that this product is only fitted by persons competent in DIY, if in doubt consult a qualified person.

Warnings

This product should be fitted in accordance with the manufacturer's fitting instructions.

This fitting pack contains small items which should be kept away from young children.

Do not place very hot or very cold items onto the glass surface unless adequate insulation material is used.

Fitting instructions

You will need a power drill, 6mm masonry drill bit, medium cross-head screwdriver, tape measure and a pencil to install this product.

Ensure the wall surface is of suitable strength and construction.

Note: The wall plugs provided are suitable for solid stone or brick walls.

For other wall types (e.g. hollow plasterboard) use appropriate wall plugs and drill bit. If in doubt, consult a qualified person.

Care and safety

Wear suitable eye protection when drilling.

When using power tools near water, for added protection against electric shock, the use of a residual current device is advised.

Beware of hidden pipes or power cables.

Take care when drilling on glazed tile surfaces in case the drill slips.

Check that all assembly fittings are tight on a regular basis.

This product contains a 5mm thick tempered glass mirror.

If glass component is chipped or broken it should be replaced.

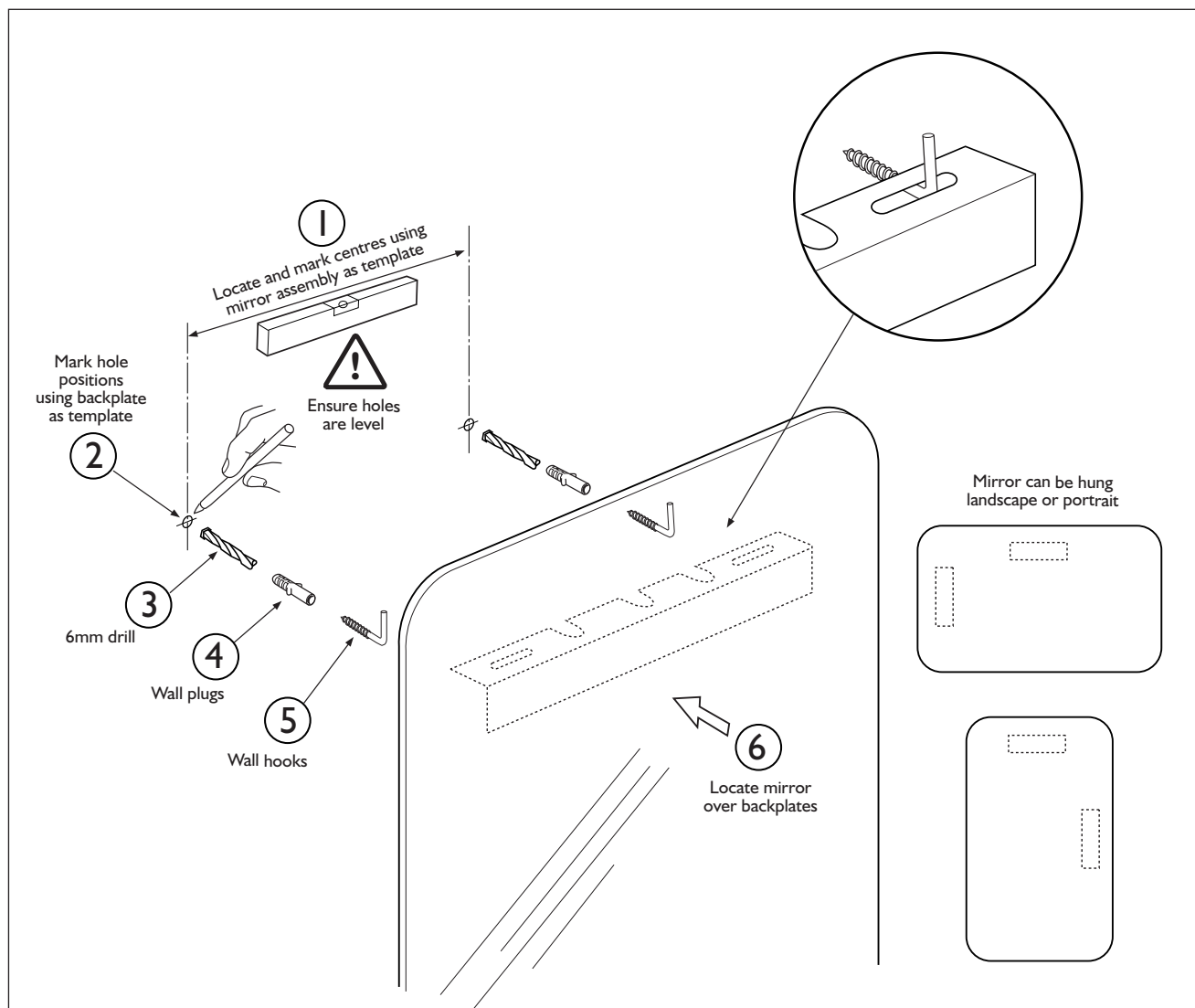
Please contact John Lewis with regard to obtaining replacement mirror, quoting the product name (e.g. either Smoked Duo or Deco design).

Cleaning

Clean metal and glass parts with a soft cloth, or for stubborn marks with a mild solution of water and washing up liquid.

Do not use scourers or cleaning agents containing abrasives such as powder cleaners, as these will damage the surface finishes.

Please retain this information leaflet for future reference.



Material composition: Tempered glass mirror

Ref: SDDMIR 020415