

R O W A N

Textured Cardigan

By Sarah Hatton





Textured Cardigan

by Sarah Hatton



YARN

	S	M	L	XL	
To fit bust	81-86	91-97	102-107	112-117	cm
	32-34	36-38	40-42	44-46	in
Felted Tweed DK					
	8	8	9	10	x 50gm

(photographed in Carbon 159)

NEEDLES

1 pair 3¼mm (no 10) (US 3) needles
1 pair 4mm (no 8) (US 6) needles
Cable needle

BUTTONS – 5 x 00405

TENSION

22 sts and 32 rows to 10 cm measured over yoke patt using 4mm (US 6) needles.

SPECIAL ABBREVIATIONS

Cr3R = slip next st onto cable needle and leave at back of work, K2, then P1 from cable needle; **Cr3L** = slip next 2 sts onto cable needle and leave at front of work, P1, then K2 from cable needle; **Cr5R** = slip next 3 sts onto cable needle and leave at back of work, K2, then P1, K2 from cable needle; **C6B** = slip next 3 sts onto cable needle and leave at back of work, K3, then K3 from cable needle.

BACK

Using 4mm (US 6) needles cast on 127 [137: 151: 165] sts.

Rows 1 and 2: Purl.

Now work in patt as folls:

Row 1 (RS): P2 [2: 4: 6], (work next 15 sts as row 1 of cable panel, P7 [9: 11: 13]) twice, work next 15 sts as row 1 of cable panel, P5 [7: 9: 11], work next 15 sts as row 1 of cable panel, (P7 [9: 11: 13], work next 15 sts as row 1 of cable panel) twice, P to end.

Row 2: K2 [2: 4: 6], (work next 15 sts as row 2 of cable panel, K7 [9: 11: 13]) twice, work next 15 sts as row 2 of cable panel, K5 [7: 9: 11], work next 15 sts as row 2 of cable panel, (K7 [9: 11: 13], work next 15 sts as row 2 of cable panel) twice, K to end.

These 2 rows set the sts – 6 cable panels with rev st st between and at sides.

Cont in patt for a further 22 rows, ending with RS facing for next row.

Place markers on centre st of each set of sts in rev st st between cable panels but **NOT** on centre st of row – 4 markers.

Row 25 (dec) (RS): *Patt to within 1 st of marked st, P3tog (marked st is centre st of these 3 sts), rep from * 3 times more, patt to end. 119 [129: 143: 157] sts.

Now working 5 [7: 9: 11] sts in rev st st between cable panels where decs have been worked, cont in patt as now set for a further 23 rows, ending with RS facing for next row.

Row 49 (RS): As row 25. 111 [121: 135: 149] sts.

Now working 3 [5: 7: 9] sts in rev st st between cables where 2nd set of decs have been worked, cont in patt as now set for a further 23 rows, ending with RS facing for next row. (All 12 rows of cable panels have now been worked 6 times.)

Next row (RS): Purl.

Move markers onto centre st of each cable panel – 6 markers.

Next row: *P to marked st, P2tog (marked st is first of these 2 sts), rep from * 5 times more, P to end. 105 [115: 129: 143] sts.

Now work in yoke patt as folls:

Row 1 (RS): K1, *P1, K1, rep from * to end.

Rows 2 and 3: P1, *K1, P1, rep from * to end.

Row 4: As row 1.

These 4 rows form yoke patt.

Cont in yoke patt until back meas 33 [34: 35: 36] cm, ending with RS facing for next row.

Shape armholes

Keeping patt correct, cast off 6 [7: 8: 9] sts at beg of next 2 rows. 93 [101: 113: 125] sts.

Dec 1 st at each end of next 5 [7: 9: 11] rows, then on foll 2 [2: 3: 3] alt rows. 79 [83: 89: 97] sts.

Cont straight until armhole meas 20 [21: 22: 23] cm, ending with RS facing for next row.

Shape shoulders and back neck

Next row (RS): Cast off 9 [10: 11: 13] sts, patt until there are 13 [14: 15: 17] sts on right needle and turn, leaving rem sts on a holder.

Work each side of neck separately.

Cast off 3 sts at beg of next row.

Cast off rem 10 [11: 12: 14] sts.

With RS facing, rejoin yarn to rem sts, cast off centre 35 [35: 37: 37] sts,

patt to end.
Complete to match first side, reversing shapings.

LEFT FRONT

Using 4mm (US 6) needles cast on 62 [67: 74: 81] sts.

Rows 1 and 2: Purl.

Now work in patt as folls:

Row 1 (RS): P2 [2: 4: 6], (work next 15 sts as row 1 of cable panel, P7 [9: 11: 13]) twice, work next 15 sts as row 1 of cable panel, P to end.

Row 2: K1 [2: 3: 4], (work next 15 sts as row 2 of cable panel, K7 [9: 11: 13]) twice, work next 15 sts as row 2 of cable panel, K to end.

These 2 rows set the sts – 3 cable panels with rev st st between and at sides.

Cont in patt for a further 22 rows, ending with RS facing for next row.

Place markers on centre st of each set of sts in rev st st between cable panels – 2 markers.

Row 25 (dec) (RS): *Patt to within 1 st of marked st, P3tog (marked st is centre st of these 3 sts), rep from * once more, patt to end. 58 [63: 70: 77] sts. Now working 5 [7: 9: 11] sts in rev st st between cable panels where decs have been worked, cont in patt as now set for a further 23 rows, ending with RS facing for next row.

Row 49 (RS): As row 25. 54 [59: 66: 73] sts.

Now working 3 [5: 7: 9] sts in rev st st between cables where 2nd set of decs have been worked, cont in patt as now set for a further 23 rows, ending with RS facing for next row. (All 12 rows of cable panels have now been worked 6 times.)

Next row (RS): Purl.

Move markers onto centre st of each cable panel – 3 markers.

Next row: *P to marked st, P2tog (marked st is first of these 2 sts), rep from * twice more, P to end.

51 [56: 63: 70] sts.

Now work in yoke patt as folls:

Row 1 (RS): *K1, P1, rep from * to last 1 [0: 1: 0] st, K1 [0: 1: 0].

Row 2: P1 [0: 1: 0], *K1, P1, rep from * to end.

Row 3: *P1, K1, rep from * to last 1 [0: 1: 0] st, P1 [0: 1: 0].

Row 4: K1 [0: 1: 0], *P1, K1, rep from * to end.

These 4 rows form yoke patt.

Cont in yoke patt until left front matches back to beg of armhole shaping, ending with RS facing for next row.

Shape armhole

Keeping patt correct, cast off 6 [7: 8: 9] sts at beg of next row. 45 [49: 55: 61] sts.

Work 1 row.

Dec 1 st at armhole edge of next 5 [7: 9: 11] rows, then on foll 2 [2: 3: 3] alt rows. 38 [40: 43: 47] sts.

Cont straight until 23 [23: 25: 25] rows less have been worked than on back to beg of shoulder shaping, ending with WS facing for next row.

Shape neck

Keeping patt correct, cast off 9 sts at beg of next row.

29 [31: 34: 38] sts.

Dec 1 st at neck edge of next 7 rows, then on foll 3 [3: 4: 4] alt rows. 19 [21: 23: 27] sts.

Work 9 rows, ending with RS facing for next row.

Shape shoulder

Cast off 9 [10: 11: 13] sts at beg of next row.

Work 1 row.

Cast off rem 10 [11: 12: 14] sts.

RIGHT FRONT

Using 4mm (US 6) needles cast on 62 [67: 74: 81] sts.

Rows 1 and 2: Purl.

Now work in patt as folls:

Row 1 (RS): P1 [2: 3: 4], work next 15 sts as row 1 of cable panel, (P7 [9: 11: 13], work next 15 sts as row 1 of cable panel) twice, P to end.

Row 2: K2 [2: 4: 6], (work next 15 sts as row 2 of cable panel, K7 [9: 11: 13]) twice, work next 15 sts as row 2 of cable panel, K to end.

These 2 rows set the sts – 3 cable panels with rev st st between and at sides.

Cont in patt for a further 22 rows, ending with RS facing for next row.

Place markers on centre st of each set of sts in rev st st between cable panels – 2 markers.

Row 25 (dec) (RS): *Patt to within 1 st of marked st, P3tog (marked st is centre st of these 3 sts), rep from * once more, patt to end. 58 [63: 70: 77] sts. Now working 5 [7: 9: 11] sts in rev st st between cable panels where decs have been worked, cont in patt as now set for a further 23 rows, ending

with RS facing for next row.

Row 49 (RS): As row 25. 54 [59: 66: 73] sts.

Now working 3 [5: 7: 9] sts in rev st st between cables where 2nd set of decs have been worked, cont in patt as now set for a further 23 rows, ending with RS facing for next row. (All 12 rows of cable panels have now been worked 6 times.)

Next row (RS): Purl.

Move markers onto centre st of each cable panel – 3 markers.

Next row: *P to marked st, P2tog (marked st is first of these 2 sts), rep from * twice more, P to end.

51 [56: 63: 70] sts.

Now work in yoke patt as folls:

Row 1 (RS): K1 [0: 1: 0], *P1, K1, rep from * to end.

Row 2: *P1, K1, rep from * to last 1 [0: 1: 0] st, P1 [0: 1: 0].

Row 3: P1 [0: 1: 0], *K1, P1, rep from * to end.

Row 4: *K1, P1, rep from * to last 1 [0: 1: 0] st, K1 [0: 1: 0].

These 4 rows form yoke patt.

Complete to match left front, reversing shapings.

SLEEVES

Using 4mm (US 6) needles cast on 69 [71: 73: 75] sts.

Rows 1 and 2: Purl.

Now work in patt as folls:

Row 1 (RS): P4 [5: 6: 7], K6, (P5, K6) 5 times, P to end.

Row 2: K4 [5: 6: 7], P6, (K5, P6) 5 times, K to end.

Rows 3 and 4: As rows 1 and 2.

Row 5: P4 [5: 6: 7], C6B, (P5, C6B) 5 times, P to end.

Row 6: As row 2.

These 6 rows form patt.

Cont in patt, shaping sides by inc 1 st at each end of 9th [7th: 7th: 5th] and every foll 18th [16th: 14th: 12th] row to 83 [87: 87: 85] sts, then on every foll – [–: 16th: 14th] row until there are – [–: 91: 95] sts, taking inc sts into rev st st.

Cont straight until sleeve meas 46 [47: 48: 48] cm, ending with RS facing for next row.

Shape top

Keeping patt correct, cast off 6 [7: 8: 9] sts at beg of next 2 rows. 71 [73: 75: 77] sts.

Dec 1 st at each end of next 9 rows, then on every foll alt row to 27 sts, then on foll 5 rows, ending with RS facing for next row.

Cast off rem 17 sts.

MAKING UP

Press.

Join both shoulder seams using back stitch, or mattress stitch if preferred.

Button band

With RS facing and using 3¼mm (US 3) needles, beg at neck shaping, pick up and knit 49 [53: 57: 61] sts evenly down left front opening edge to top of cable panels, then 60 sts down opening edge to cast-on edge.

109 [113: 117: 121] sts.

Row 1 (WS): K1, *P1, K1, rep from * to end.

Rows 2 and 3: P1, *K1, P1, rep from * to end.

Row 4: As row 1.

These 4 rows form patt.

Rep last 4 rows once more, ending with WS facing for next row.

Cast off in patt (on **WS**).

Buttonhole band

With RS facing and using 3¼mm (US 3) needles, beg at cast-on edge, pick up and knit 60 sts evenly up right front opening edge to top of cable panels, then 49 [53: 57: 61] sts up opening edge to neck shaping. 109 [113: 117: 121] sts. Work in patt as given for button band for 3 rows, ending with RS facing for next row.

Row 4 (buttonhole row) (RS): Patt 64 [65: 63: 64] sts, (cast off 2 sts, patt until there are 11 [12: 14: 15] sts on right needle after cast-off) 3 times, cast off 2 sts, patt to end.

Row 5: Patt to end, casting on 2 sts over those cast off on previous row.

Work in patt for a further 3 rows, ending with **WS** facing for next row.

Cast off in patt (on **WS**).

Neckband

Using 3¼mm (US 3) needles cast on 8 sts, beg and ending at cast-off edges of front bands and with RS facing, pick up and knit 31 [31: 33: 33] sts up right side of neck, 41 [41: 43: 43] sts from back, then 31 [31: 33: 33] sts down left side of neck. 111 [111: 117: 117] sts.

Work in patt as given for button band for 3 rows, ending with RS facing for next row.

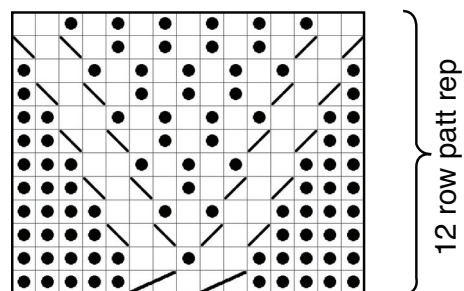
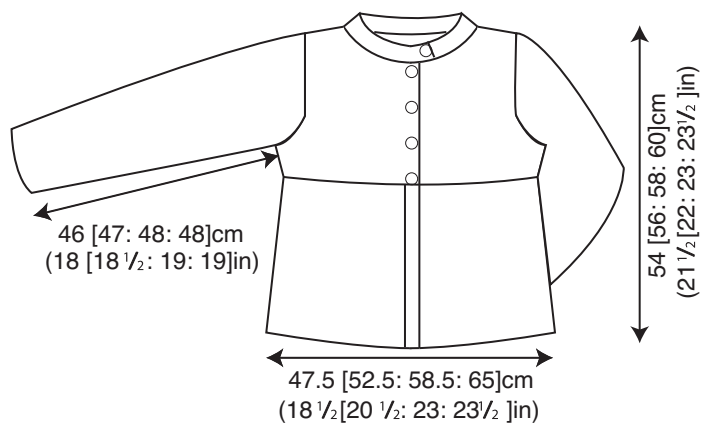
Row 4 (buttonhole row) (RS): Patt 4 sts, cast off 2 sts, patt to end.

Row 5: Patt to end, casting on 2 sts over those cast off on previous row.

Work in patt for a further 3 rows, ending with WS facing for next row.

Cast off in patt (on **WS**).

Set in sleeves using the set-in method.



key



K on RS, P on WS



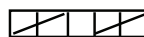
P on RS, K on WS



Cr3R



Cr3L



Cr5R