



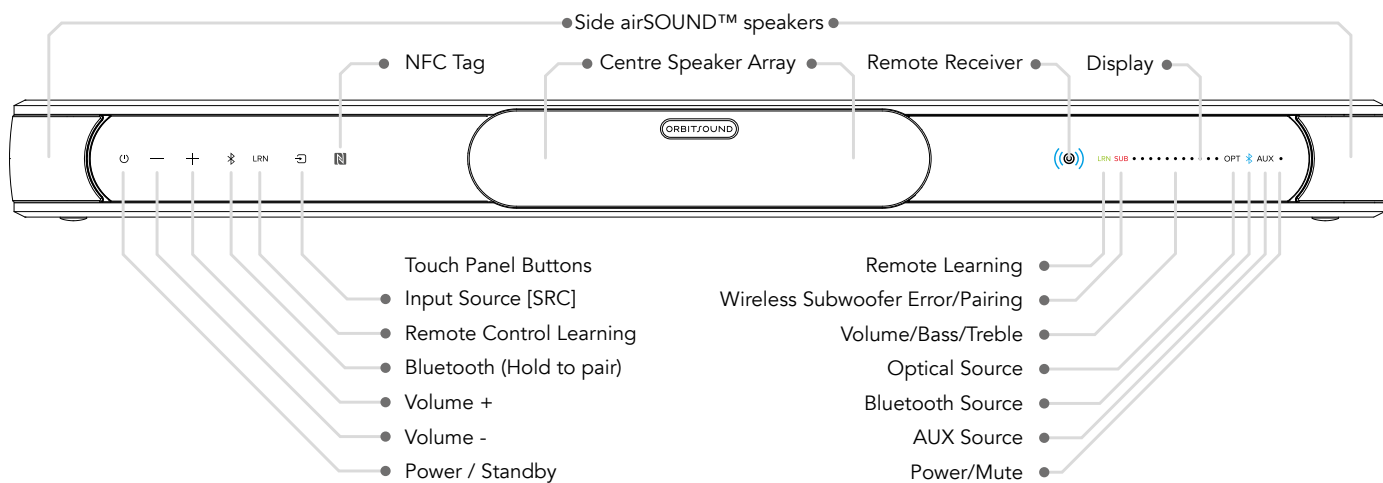
A Series Airsound™ Bar FAQ

CONTROL PANEL BUTTONS

Shown here are the buttons on the A series units and locations of key features:

ORBITSOUND UK
SUPPORT

0207 294 7332



DESIGNED
IN BRITAIN

ORBITSOUND

MY SUBWOOFER WILL NOT CONNECT TO THE SOUNDBAR / MY SUBWOOFER KEEPS DROPPING OUT / MY SUBWOOFER CONNECTS, BUT I CAN'T HEAR ANYTHING.

Before clearing and resetting your subwoofer and soundbar pairing, you will need to clear the Bluetooth stack as this can sometimes cause interference. Please note clearing the Bluetooth stack will also clear all previous Bluetooth pairings so your devices will have to be re-paired once this process has been followed. Clear your subwoofer pairing information by resetting the Bluetooth memory...

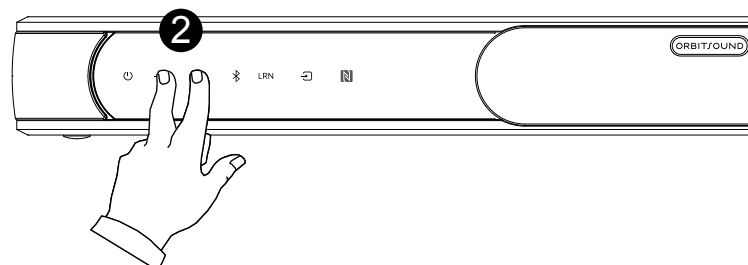
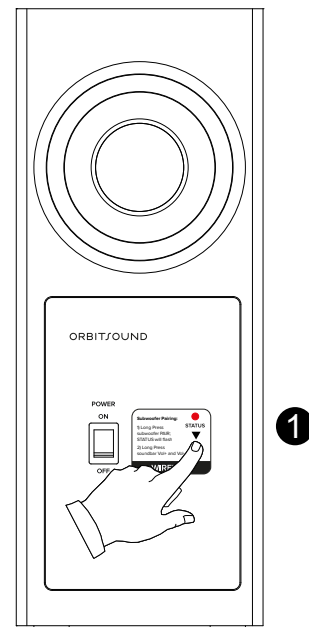
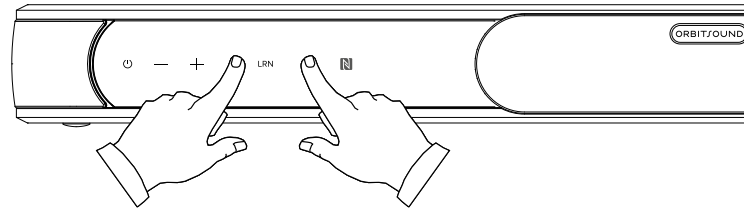
TO RESET THE BLUETOOTH MEMORY:

Ensure that your A70 airSOUND bar is connected to the electricity mains and is not on standby.

Press and hold the BLUETOOTH and Source button (this is a small logo of a square with an arrow going into it, the button to the furthest right of the same panel as the Bluetooth button) buttons on the soundbar front panel for 3 seconds. Your soundbar will flash all lights to show that the operation is complete. The Bluetooth memory is now cleared from all devices, including the subwoofer. Note: if the lights do not flash on the soundbar display, then the process has not worked. You must press the buttons at the same time to initiate a Bluetooth reset. The subwoofer is now ready to pair - see "Subwoofer Pairing"

SUBWOOFER PAIRING

Press and hold for 3 seconds the button on the back of the subwoofer (1). The STATUS light on the subwoofer will slowly flash. Press and hold for 3 seconds the Vol+ and Vol- buttons on the soundbar (2). The red



'SUB' light will start to flash on the front of the soundbar to indicate that the soundbar is searching for the subwoofer.

Wait. When the SUB light on the front of the soundbar goes out, you know the pairing has been successful.

REMOTE LEARNING INSTRUCTIONS

The A70 airSOUND bar can learn volume control instructions from many other remote control types. The soundbar has the ability to go into a learning mode and to 'scan' a new remote control button, and to use this as a volume control function. This means that when using your A70 airSOUND bar, you will not need to reach for the Orbitsound remote in order to adjust the soundbar volume.

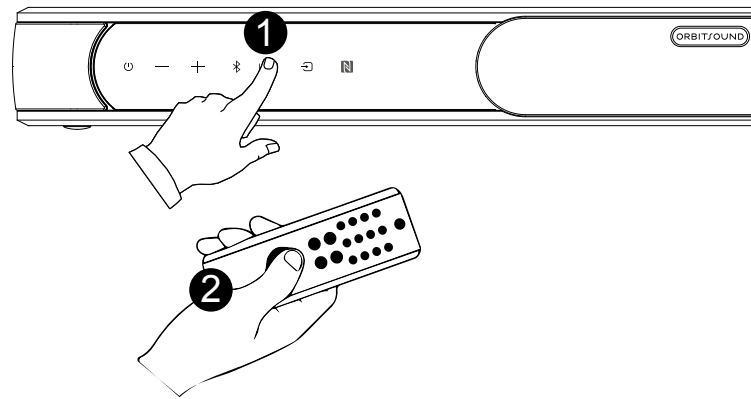
TO LEARN A REMOTE:

Press and hold the LRN button on your soundbar for 3 seconds (1). The control panel will show a green 'LRN' logo and lights will show on the display to request volume up or down buttons to be pressed on a new remote to be learned. Press Vol+ on your TV remote to be learned (2) when prompted. Wait, then repeat when prompted by the soundbar. Repeat for Vol- when prompted. Your soundbar will confirm successful remote learning and flash all lights.

If the learning did not work no lights will flash, try again and use short presses on your TV remote to be learned, and wait to be prompted for a press. Note: the A70 airSOUND bar can learn from many popular remotes. It is not compatible with all remote control types.

Supported Remote Control types: Samsung, LG, Sony.

Not Supported for units pre Spring 2016:
Panasonic





I HEAR NO SOUND OR A 'MACHINE GUN' LIKE NOISE CONSTANTLY

I GET NO SOUND OR STRANGE SOUND FROM HD CHANNELS OR NETFLIX

This is happening because the signal from your TV or set top box is incompatible with the A Series, possibly being Dolby or DTS encoded.

We do not use Dolby or DTS, so this solution is to turn off this feature on your TV or set top box menus. Look for Audio settings on your TV, and change the output format to 'PCM' or 'Stereo', or 'Normal'. This being an uncompressed signal will give you the highest fidelity sound, and work with the A Series.

If you are not able to locate this setting, contact our support. We are able to talk you through most TV brands to get to this feature.

Another solution is to use the AUX input to deliver sound to the soundbar from the headphones or AUX output from the TV. This analogue signal will not have the same problem as mentioned above.

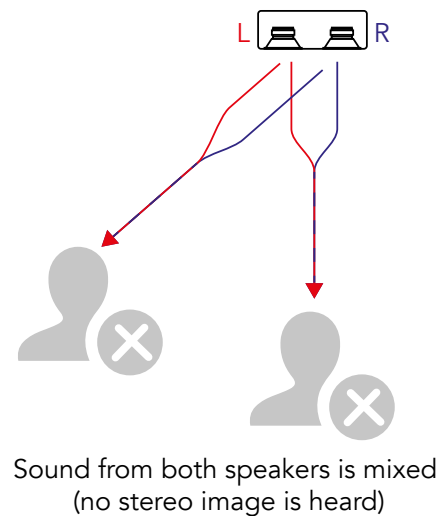
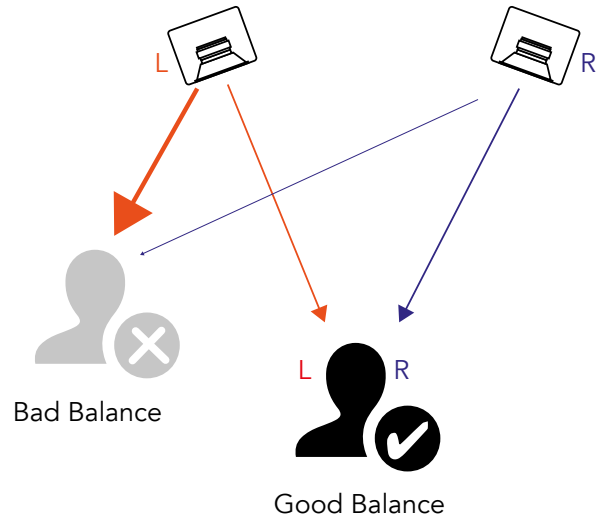
ABOUT AIRSOUND TECHNOLOGY

Invented by Ted Fletcher in 2005, airSOUND™ is a revolutionary patented British audio innovation that delivers high fidelity sound throughout a listening space, from a single speaker enclosure.

A traditional 'stereo' system has 2 speakers, placed a distance apart. These play the left and right channels of recorded sound, intended for the Listener's left and right ears separately. The Listener must be in between them, in the 'sweet spot' to hear a good sound. If the listener is closer to one speaker than the other, then the stereo effect is lost.

PORTABLE SPEAKERS & SOUNDBARS:

For portable speakers or soundbars where the left and right speakers are close together, the left and right channels cannot be heard separately, so there is very little stereo effect.



THE AIRSOUND SOLUTION:

The sound that is intended for both ears comes from the front. Side speakers produce only the spatial information, and do not need to be heard independently by left and right ears, so, a Listener will hear a complete stereo image from the front and either of the side speakers. This is how airSOUND overcomes that fundamental limitation of 2 speaker stereo, allowing true freedom from the stereo sweetspot.

