


ROBERTSON 3 LIGHT CEILING FITTING

IL3187

Thank you for buying this **Robertson** ceiling fitting.
Please read the instructions and warnings carefully before use to ensure safe and satisfactory operation of this product.

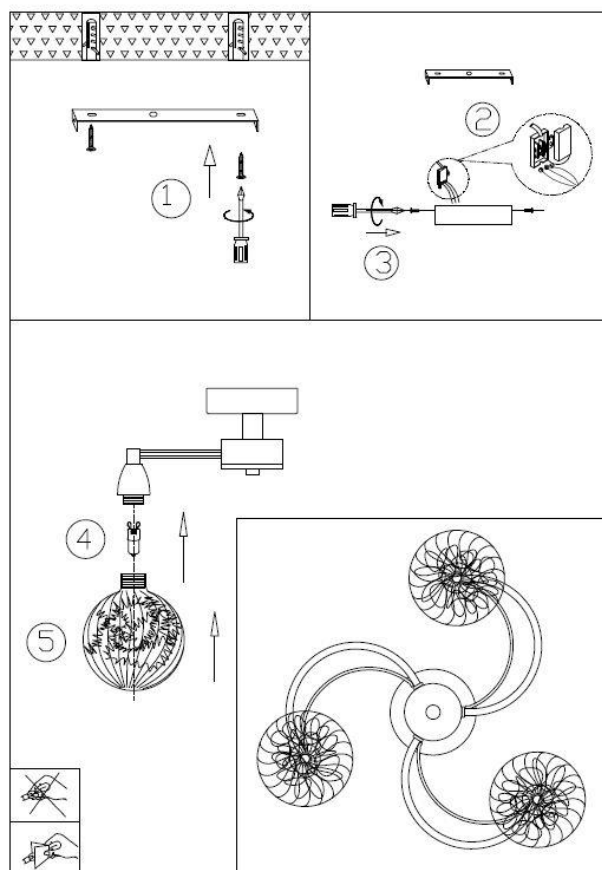
This product is Class I and must be earthed

Warnings

- * It is recommended that this fitting is installed by a qualified electrician.
- * This fitting should be fitted in accordance with IEE Wiring Regulations and the Building Regulations.
- * To prevent electrocution switch off at the mains supply before installing or maintaining this fitting. Ensure other persons cannot restore the electricity supply without your knowledge.
- * If you are in doubt please consult a qualified electrician.
- * To avoid damage to concealed wiring during installation, establish the direction of the supply cable before drilling fixing holes.
- * This fitting should be fitted to a lighting supply with protected 5 amp fuse or equivalent circuit breaker.
- * Always be sure to use the correct type and wattage of bulbs as indicated on the fitting. Never exceed the wattage stated.
- * When changing the bulb, always switch off at the mains and allow the old bulb to cool down before handling. Dispose of used bulbs carefully.
- * This fitting is designed for use with self-shielded tungsten halogen lamps only = 

Instructions for use

1. Ensure the house electricity supply is off at the fuse board.
2. If removing an existing fitting, first note down all wiring connections.
3. Remove mounting bracket from fitting by removing the retaining screws (washers) and retain for later.
4. Using mounting bracket as a template, mark and then drill the fixing holes in the ceiling (ensure holes are drilled into a secure joist). **Take care not to damage wiring.**
5. Attach mounting bracket to the mounting surface using suitable fixings. Make sure no wires are trapped in the process.
6. Lift the fitting close to supply cable and then make the electrical connections as follows:
Connect supply live (normally brown or red) to fitting live (marked "L") on the terminal block.
Connect supply neutral (normally blue or black) to fitting neutral (marked "N") on the terminal block.
Connect supply earth (normally green/yellow or unsheathed) to earth (marked "⏏" or "E") on the terminal
7. Carefully offer fitting over mounting bracket then secure in place with the screws and any washers removed earlier.
8. Fit the bulbs, type and wattage as indicated on the fitting. **The wattage indicated must not be exceeded.** Do not touch halogen lamps with bare hands as this will shorten their life.
9. Fit the glass. Position the glass shade over the top of the threaded lampholder and carefully screw the shades into position. Take care not to cross-thread or overtighten as this may cause damage to the fitting.
10. Switch on the electricity supply at the fuse board.



Please retain this information leaflet for future reference

GENERAL INFORMATION

This fitting is designed for internal use only
Do not use polished or abrasive cleaner – just a soft dry cloth.

