

CHRISTABEL NON ELEC PENDANT

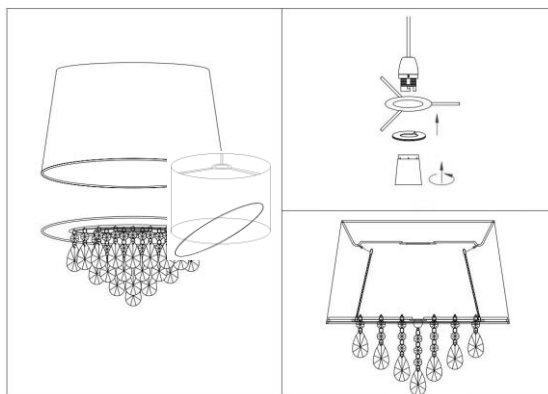
Thank you for buying this non-electrical pendant.
Please read the instructions and warnings carefully before use to ensure safe and satisfactory operation of this product.

Step 1 – Unpacking.

1. Remove the diffuser from shade: Place the shade on a clean, flat surface with the diffuser facing upwards. Carefully, but firmly, push down on one section of the diffusers edge. The diffuser will tilt and can then be lifted out of the shade.
2. Remove the protective wrapping from the diffuser and from around the shade.

Make sure the electricity is switched off at the fuse board before removing bulb.

3. Ensure the lamp holder is in good condition and is not damaged before proceeding.
4. Allow the old bulb to cool down before handling. Remove existing light bulb from lamp holder.
5. Remove lower half of lamp holder and make sure lamp holder is not damaged.
6. If required, clip the reducing ring into top ring of the shade.
7. Place upper half of lamp holder, attached to cable, through top ring of shade.
Replace lower half of lamp holder to hold the pendant in place.
8. Fit the bulb, type and wattage as indicated on the product.
9. Re-fit the diffuser: Insert diffuser into the shade at an oblique angle. Place one hand inside the shade and gently press down all around the diffuser's edge whilst supporting the shade from underneath. Take care not to put any strain on the supply cable or lamp holder.
10. Attach the clasps at the ends of the 3 support chains already attached to the top side of the diffuser to the metal arms on the shade frame as shown in the diagram



11. Switch the electricity back on at the fuse board. You may now switch on the light. Your non-electric shade is now ready for use.

Please retain this information leaflet for future reference

GENERAL INFORMATION

This fitting is designed for internal use only

Do not use polish or abrasive cleaner – just a soft dry cloth.

John Lewis Partnership 171 Victoria Street London SW1E 5NN

www.johnlewis.com

IL3453 09/16

CHRISTABEL NON ELEC PENDANT

Thank you for buying this non-electrical pendant.
Please read the instructions and warnings carefully before use to ensure safe and satisfactory operation of this product.

Step 1 – Unpacking.

1. Remove the diffuser from shade: Place the shade on a clean, flat surface with the diffuser facing upwards. Carefully, but firmly, push down on one section of the diffusers edge. The diffuser will tilt and can then be lifted out of the shade.
2. Remove the protective wrapping from the diffuser and from around the shade.

Make sure the electricity is switched off at the fuse board before removing bulb.

3. Ensure the lamp holder is in good condition and is not damaged before proceeding.

4. Allow the old bulb to cool down before handling. Remove existing light bulb from lamp holder.

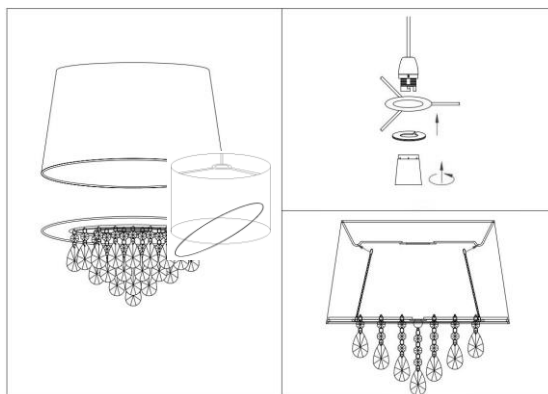
5. Remove lower half of lamp holder and make sure lamp holder is not damaged.

6. If required, clip the reducing ring into top ring of the shade.

7. Place upper half of lamp holder, attached to cable, through top ring of shade.

Replace lower half of lamp holder to hold the pendant in place.

8. Fit the bulb, type and wattage as indicated on the product.
9. Re-fit the diffuser: Insert diffuser into the shade at an oblique angle. Place one hand inside the shade and gently press down all around the diffuser's edge whilst supporting the shade from underneath. Take care not to put any strain on the supply cable or lamp holder.
10. Attach the clasps at the ends of the 3 support chains already attached to the top side of the diffuser to the metal arms on the shade frame as shown in the diagram



11. Switch the electricity back on at the fuse board. You may now switch on the light. Your non-electric shade is now ready for use.

Please retain this information leaflet for future reference

GENERAL INFORMATION

This fitting is designed for internal use only

Do not use polish or abrasive cleaner – just a soft dry cloth.

