

SWISH ELEMENTS BAY KIT

Fitting Instructions

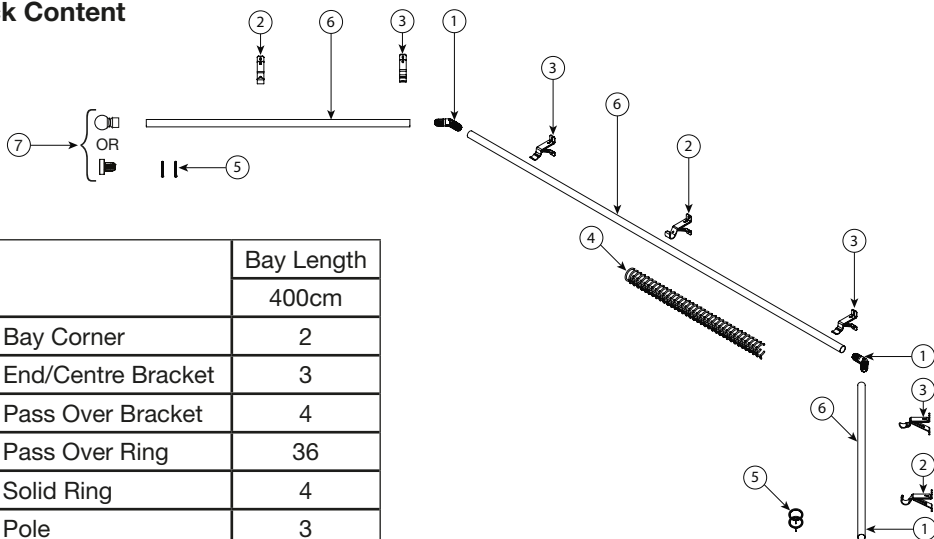
Please keep for future reference

Tools required



Please read these instructions carefully and check the contents of the pack before attempting to assemble and fix this product.

Pack Content



		Bay Length
		400cm
1	Bay Corner	2
2	End/Centre Bracket	3
3	Pass Over Bracket	4
4	Pass Over Ring	36
5	Solid Ring	4
6	Pole	3
7	Finial	2

Should any component be missing, please call the Customer Care Department on **0330 005 2233**.

Safety Recommendation

Only use a Step Ladder to install this product.

DO NOT over reach. Always move the Step Ladder so that you are in a safe working position.

DO NOT hold or lean on the pole to support your weight.

We recommend you use two people for installation of larger poles.

Take care when using power tools, use of a Residual Current Device (RCD) is recommended.

Always use eye protection when drilling. Beware of hidden pipe runs and cables.

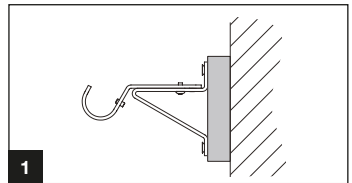
No liability will be accepted for damage or injury caused by incorrectly installed or assembled product.

PLEASE KEEP OUT OF THE REACH OF YOUNG CHILDREN. SMALL PARTS - CHOKING HAZARD
PLEASE KEEP THESE INSTRUCTIONS AND THE BATCH CODE ON THE PACKAGING FOR FUTURE
REFERENCE IN CASE OF ANY QUERIES

Fitting Recommendation

We recommend for better support of the installation to fit the bracket to a secure wooden batten which is larger than the bracket backplate. (fig.1)

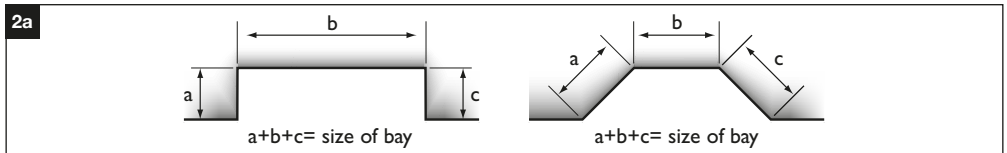
If you are unsure if the product is suitable please ask advice from a professional builder or your DIY store.



Measuring the Window (fig.2a,2b,2c)

Straight lengths over 180cm will require an centre support bracket.

Should you wish to dress your curtains outside of the bay recess, this is possible by reverse bending 2 extra corner joints and installing extra brackets (both sold separately).



Lay the bay pole parts out on the floor of your bay window (fig.2b) to calculate the position of the brackets.

For the pass over brackets, calculate the bracket position from the corner of the wall (W) so that the centre of the bracket is 4cm from the joint between the bay corner and the adjacent pole. You will need to bend the bay corner to the correct angle, see "Fitting the Bay Corner".

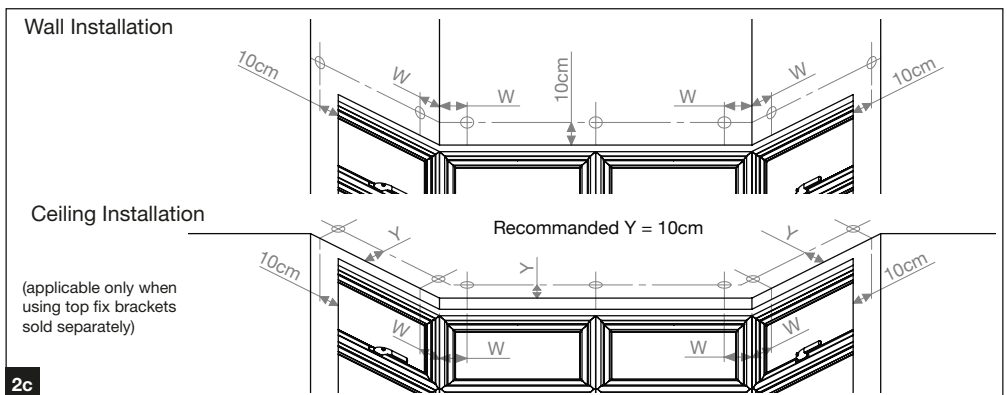
For the end/centre brackets, calculate the bracket position so its centre is around 10cm from where you want the pole to end.

The third end/centre bracket should be aligned with the centre of the middle window bay.

DO NOT CUT THE POLES!

Mark the pole centre line on the wall 10cm over the top edge of the window and then mark the positions of the brackets on the wall using fig.2c below as a guide.

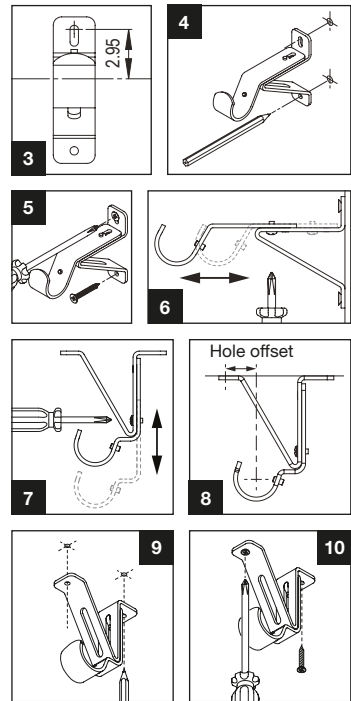
For ceiling installation mark the pole centre line on the ceiling to the required distance from the wall (Y). We recommend Y to be around 10cm. Mark the brackets position on the wall and project them perpendicularly onto the ceiling as shown fig.2c.



Note: Use the correct wall plugs and screws for the type of wall or ceiling to which you are mounting your pole. If you are unsure please consult your local builders merchant or DIY store.

Wall Fixing the Bracket

1. Mark the top hole position for each bracket offset by 2.95cm from the pole centre line previously marked. (fig.3)
2. Use the bracket as a template to mark the second hole position onto the wall. (fig.4)
3. Drill holes and fit the correct plugs if fixing on masonry wall. (fig.5)
4. Fix the bracket using the correct screws. (fig.6)
5. The bracket can be adjusted in projection by unscrewing the inner screw. Once in the desired position, lock in place by tightening the inner screw. (fig.6)



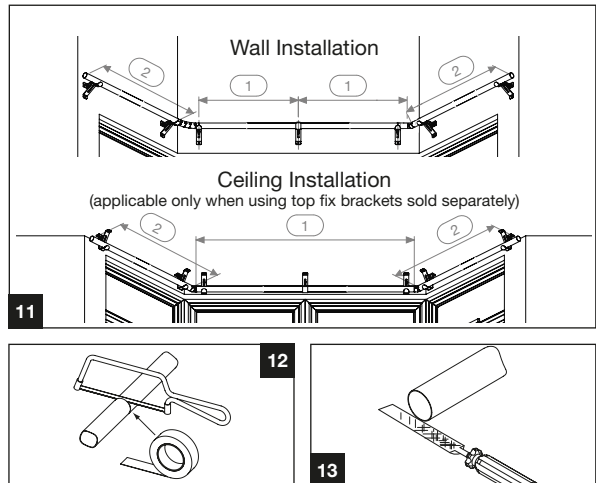
Ceiling Fixing the Bracket (sold separately)

1. The bracket can be adjusted to 3 positions by unscrewing the inner screw completely and tightening it back in the next available position. (fig.7)
2. Mark the front hole position for each bracket offset from the pole centre line previously marked (fig.8) as per table.
3. Use the bracket as a template to mark the second hole position onto the ceiling. (fig.9)
4. Drill holes and fit the correct plugs if fixing on masonry ceiling.
5. Fix the bracket using the correct screws. (fig.10)

Pole size	Hole offset
28	2.1cm

Cutting the pole

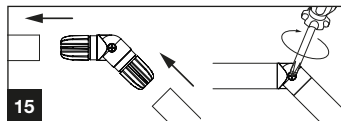
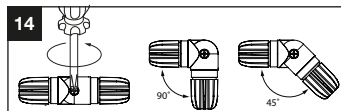
1. Starting in the middle of the window (fig.11), build the pole outwards cutting the poles to length as required.
2. Calculate length No 1 by adding 8cm to the measured distance between the brackets centres.
3. Calculate length No 2 by adding 14cm to the measured distance between the brackets centres.
4. Mask area to be cut to avoid damaging pole and cut the pole to length. (fig.12)
5. File sharp edges to avoid injury or damage to other components. (fig.13)



Fitting the Bay Corner

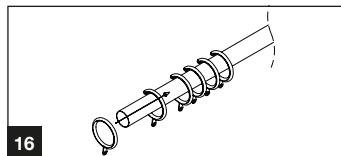
1. Adjust the bay corner into the desired angle by loosening the segment screw. Once in the desired position slightly tighten the screw. (fig.14)
2. Slide the poles onto the plastic bung ends of the bay corners.
Note: Fully secure the screws on the bay corner once the bay pole is fully installed. (fig.15)

Bay corners should always be supported by two pass over brackets.



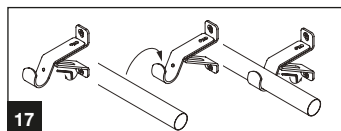
Preparing the curtain (fig.16)

1. Leave the solid rings aside, slide an equal amount of pass over rings on each side of the bay (approximately 1 ring per 10cm of pole).
2. Finish each side by adding 1 solid ring per side onto the pole.



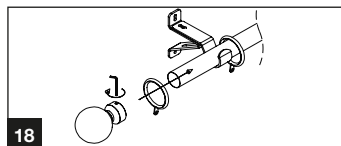
Fixing the pole (fig. 17)

1. Loosen the grub screw on the bracket.
2. Place pole in bracket.
3. Tighten the grub screw until the pole does not slide in the bracket.



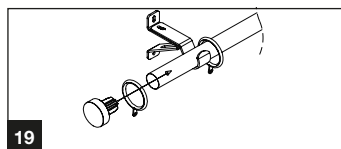
Fixing the finial (fig.18)

1. Place one of the solid rings on the pole after the bracket.
2. Slide the finial onto the pole and tighten the grub screw until the finial is secure.



For Stud finials (fig.19)

1. Place one of the full rings on the pole after the bracket.
2. Push the plastic bung end of the stud finial into the pole until it is secure.



Installing the curtain

1. Equally space curtain hooks along curtain header, you will require one hook for every ring. (fig.20)
2. Place hooks through the eyelet on the ring. (fig.20)
3. Test the installation by drawing the curtains across the pole. (fig.21)

