

Recommended bulb

5 x 3-6 Watt E14 (SES) energy efficient LED candle bulb

Or

5 x 28W E14 eco halogen candle bulb

Bulb not included

Specification

Max power: 28W


Voltage: 220~240V, 50/60Hz

IP20

Weight 2.5 Kg



Please retain these instructions for future reference.

This symbol  indicates that this product should not be treated as normal household waste and it should be recycled. John Lewis does not operate in store take back, but as members of the Distributer Take Back scheme have funded the development and upgrade of recycling facilities across the UK. Please take it to your nearest collection facility or for further details contact your local council or visit www.recycle-more.co.uk.

We have taken great care to ensure that this product reaches you in perfect condition. However, should any parts be damaged or missing please e-mail lightingparts@JLPspares.co.uk

Trouble shooting:

Why is the light not working when switched on?

Check your power supply is switched on

Turn off light and check that the bulb is inserted correctly

Check the bulb is still in working order.

John Lewis partnership

171 Victoria Street

London SW1E 5NN

JohnLewis.com

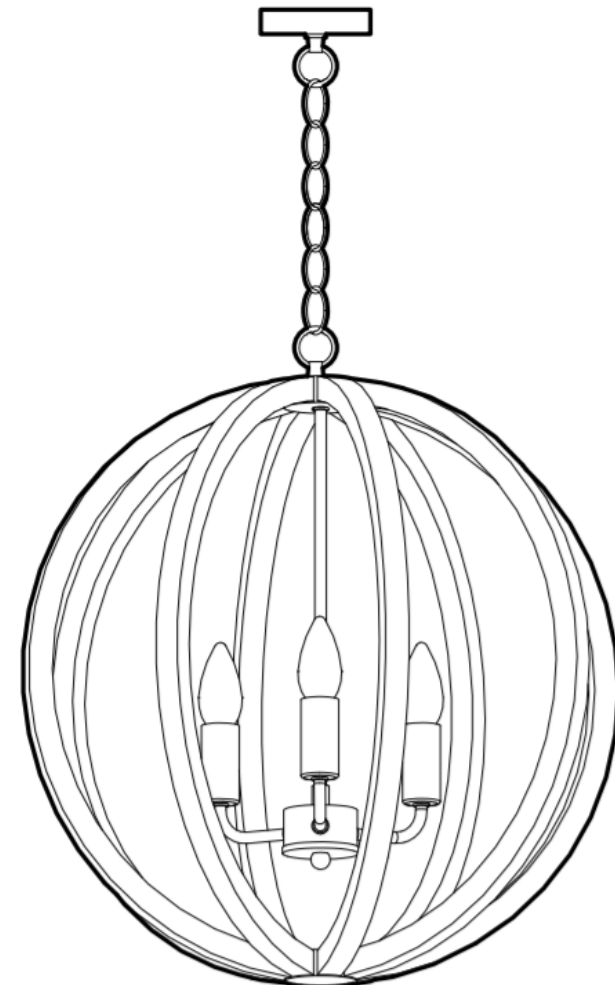
Made in China

Issue 01 09/18

John Lewis


User manual

Lars Ceiling Pendant



Thank you for purchasing this Lars ceiling pendant.
Please read the instructions carefully before use to ensure safe and satisfactory operations of this product. Please keep this instruction for future reference.

Warnings!

This product is Class II =  and should be fitted to a lighting Supply protected by a 5 amp fuse or equivalent circuit breaker.

For your safety, this product must be installed in accordance with local Building Regulations. If in any doubt, or where required by the law, consult a competent person who is registered with an electrical self-certification scheme. Further information is available online or phone your Local Authority.

To prevent electric shock, switch off the mains supply before installing or maintaining this product. Ensure other persons cannot restore the electricity supply without your knowledge.

Always use the correct bulb type with the correct wattage as indicated in the specification table.

When changing the bulb, always switch off at the mains and allow the old bulb to cool down before handling. Dispose of used bulbs carefully.

Caution! The bulb and surrounding parts can become hot during use.

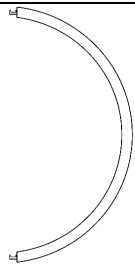



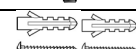



For indoor use only.

Care instructions

We recommend cleaning with a soft dry cloth. Do not use abrasive materials as these will damage the finish.

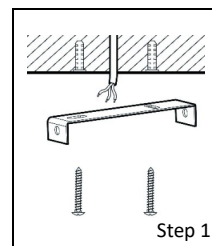
Replace bulbs from John Lewis or established brand of the same type and compatibility.

Parts list

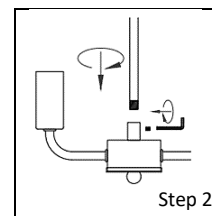
Part List	Qty	Part List	Qty	Part List	Qty
A 	8	C 	2	H 	1
		D 	16		
		E 	2		
		F 	1		
B 	1	G 	1		

Assembly

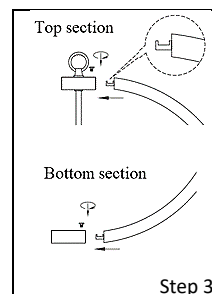
Never install your appliance on a wet, freshly painted or plastered surface. Ensure the house electricity supply is switched off at the fuse box. If removing an existing fitting, note down all wiring connections. Check the fixings will not touch any existing wiring before drilling and attaching the light to the ceiling.
Ensure you thread the ceiling wires through the black insulating tube fixed to the appliance.



Step 1



Step 2



Step 3

Step 1

Remove mounting bracket from fitting by removing the retaining screws and washers, retain for later. Using the mounting bracket as a template, mark and then drill the fixing holes in the ceiling (ensure the screws are firmly fixed into a solid or other suitable mounting and not just the plasterboard.). Take care not to damage wiring. Attach mounting bracket to the mounting surface using suitable fixings. Do not attach fitting to mounting bracket at this stage.

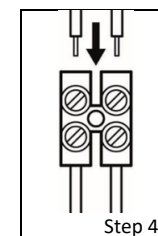
Steps 2, 3

Rotate the main stem into the collar on the central hub section containing the lamp holders. Lock the stem into place by tightening the grub screw located on the side of the receiving collar using the hex key provided.

Assembling the frame: Each wooden frame section has a fixing hook located at either end. The fixing hook must be installed so the cut-out is facing upwards as shown in the illustration. Starting at the top, insert one frame section into the upper securing hub, making sure the hook is fully engaged before tightening the securing screw on the top of the hub using the screwdriver tool provided. Next, secure the lower part of the frame section into the lower fixing hub (part B) and tighten into place. Attach the second frame section on the opposite side to the first. Fit sections three and four at 90° degrees to sections one and two so a sphere is formed. Assemble the remaining frame sections in-between those already assembled until the shape is complete. Make sure all connections are tight before leaving unattended.

shape is complete. Make sure all connections are tight before leaving unattended.

Height Adjustment: This fitting is height adjustable at point of installation only. **No attempt must be made to adjust the height once it has been attached to the ceiling.** Open and remove the lower adjustable chain link by loosening the barrel nut located at the side of the link. Using a pair of pliers, carefully open the chain links and remove the required number of links. Reattach the lower removable chain link. **Note:** The weight of the fitting must be supported by the chain and not the electrical cable.



Step 4

Step 4

Ensuring that the power has been isolated, lever open the terminal block box cover with a screwdriver then feed supply cable through rubber sleeving and make electrical connections as follows:

- Connect the supply Live to fitting live (marked "L")
- Connect the supply neutral to fitting neutral (marked "N")

NO EARTH must be connected to any part of this fitting. Excess cable must be carefully located inside ceiling cup or within the ceiling void.

Carefully offer fitting over mounting bracket then secure in place with the screws and washers removed earlier. **Fit the bulb**, type and wattage as indicated on the fitting (bulb not supplied). The wattage indicated must not be exceeded. Once installation is complete, the electricity may be restored at the fuse box.