

For use

When cleaning, we recommend cleaning with a soft dry cloth. Do not use abrasive materials as these will damage the finish

Recommended bulb

3 x 3-5 Watt
GU10 LED Energy Efficient bulb.

Or
3x 50 Watt
GU10 Halogen Reflector

When changing a bulb, always switch off at the mains and allow the bulb to cool before handling. Dispose of used bulbs carefully. Do not exceed the wattage stated or use a different shape bulb from that indicated on the fitting.

Some Energy saving bulbs are not suitable for use with a dimmer switch.

Specification


Maximum wattage: 50W

Voltage: 240V, 50Hz

IP Rating: IP20

Weight: 1.192 kg



This symbol  indicates that this product should not be treated as normal household waste and it should be recycled. John Lewis do not operate instore take back, but as members of the Distributor Trade Back scheme have funded the development and upgrade of recycling facilities across the UK. Please take it to your nearest collection facility or for further details contact your local council or visit www.recycle-more.co.uk.

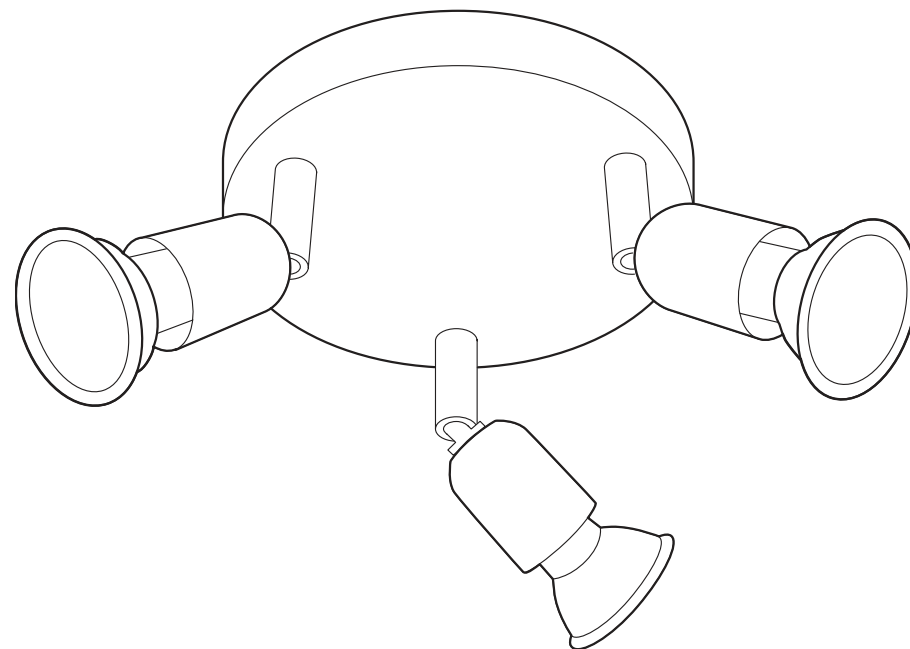
We have taken great care to ensure that this product reaches you in perfect condition. However, should any parts be damaged or missing please contact our Product Helpline on (01202) 690945.

John Lewis Partnership
171 Victoria Street
London SW1E 5NN
johnlewis.com

Made in China

John Lewis

Installation instructions Keely 3lt Spot



27/03/2017

Warnings!

This is a Class I product and must be earthed.

Please read these instructions carefully before commencing any work. It is recommended that this fitting is installed by a qualified electrician.

Install in accordance with the IEE Wiring regulations and the Building Regulations.

To prevent electrocution switch off at mains supply before installing or maintaining this fitting.

Ensure other persons cannot restore the electrical supply without your knowledge.

If you are in any doubt, please consult a qualified electrician.

This light fitting should be connected to a 5 amp fused circuit.

If replacing an existing fitting, make a note of the connections.

Always use the correct type and wattage bulb. Never exceed the wattage stated.

This product contains hot parts. When changing a bulb or adjusting the heads, always switch off at the mains and allow to cool down. Dispose of used bulbs carefully.

This product is suitable for indoor use only.

This product is suitable for installation on surfaces with normal flammability e.g. wood, plasterboard, masonry. It is not suitable for use on highly flammable surfaces (e.g. polystyrene, textiles).

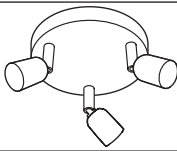




For your safety, always switch off the supply before changing lightbulbs, cleaning or removing shades. Always take care when handling lightbulbs to avoid injury in case of breakage.

This product has been designed with folding bars to allow different configurations and layouts to be easily achieved. To position the bars, fold them out into the desired configuration. There is no need to tighten the bars once in position. They are designed to rotate freely to allow easy operation. When installing and using this product, take care not to allow the bars and heads to collide with each other.

 **This product is dimmable when used in conjunction with suitable bulbs.**

Halogen bulbs up to 50W can be used - but ensure that the minimum distance to the illuminated surface is not less than 0.5m (50 cm).

Parts List

Light Fitting		I	Screws	 	2
			Wall plugs	 	2

Installation Instructions

Make sure you have the following items which are required to install this light fitting:

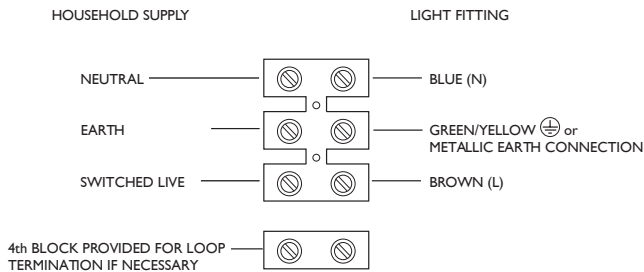
- Small electrical screwdriver, cross head screwdriver & insulation tape.
- The installation of this fitting will be much easier with the help of an assistant.

Step 1

Before removing the existing fitting, **carefully note the position of each set of wires.** Where a ring/loop circuit exists there will be a fourth set of wires (usually red) that are not connected to the L, N, or E. of the fitting. This circuit must be kept together in the 4th terminal of the connection block, and insulated from the fitting and the other wires. The ring/loop will remain live unless isolated at the mains or circuit breaker **regardless of the position of the wall switch.**

Step 2

Having identified the household wiring from your existing light fitting, connect to the connection block inside the product in the following way:



Check that.....

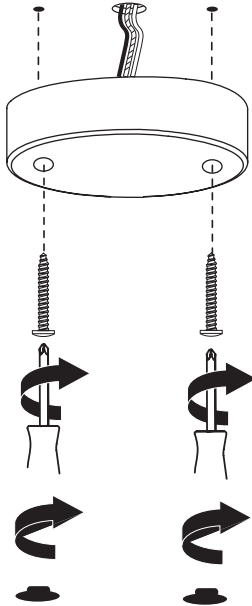
You have correctly identified the house wires.
The connections are tight.
No loose strands have been left out of the connection block.

Step 3

When completed, ensure that there are no bare or loose strands of wire exposed, and cover all exposed areas of the connection block with 2 layers of insulation tape.

Step 4

Locate the fixing screws through the white plastic plugs in the ceiling cover and screw directly into the ceiling making sure that there is a joist at the point of fixing. Take care not to trap or damage any wiring. Apply the chrome finish screw caps to the screw heads once attached to the ceiling.



Step 5

Fit the recommended bulbs as per the details overleaf.

Step 6

Replace fuse or circuit breaker and switch on. Your light is now ready for use.