

## Recommended bulb

1 x 4-8W ES energy efficient LED classic bulb

or

1 x 28W ES eco halogen classic bulb

Bulb not included

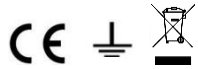
## Specifications

Max. power: 40W

Voltage: 220-240V~50/60Hz

IP rating: 20

Weight: 0.47kg



Please retain these instructions for future reference.

This symbol  indicates that this product should not be treated as normal household waste and it should be recycled. John Lewis do not operate instore take back, but as members of the Distributor Take Back scheme have funded the development and upgrade of recycling facilities across the UK. Please take it to your nearest collection facility or for further details contact your local council or visit [www.recycle-more.co.uk](http://www.recycle-more.co.uk).

We have taken great care to ensure that this product reaches you in perfect condition.

However, should any parts be damaged or missing please e-mail

[lightingparts@JLPspares.co.uk](mailto:lightingparts@JLPspares.co.uk)

## Trouble Shooting:

Why is the light not working when switched on?

Check your power supply is switched on

Turn off light and check that the bulb is inserted correctly

Check the bulb is still in working order.

John Lewis Partnership

171 Victoria Street

London SW1E 5NN

[johnlewis.com](http://johnlewis.com)

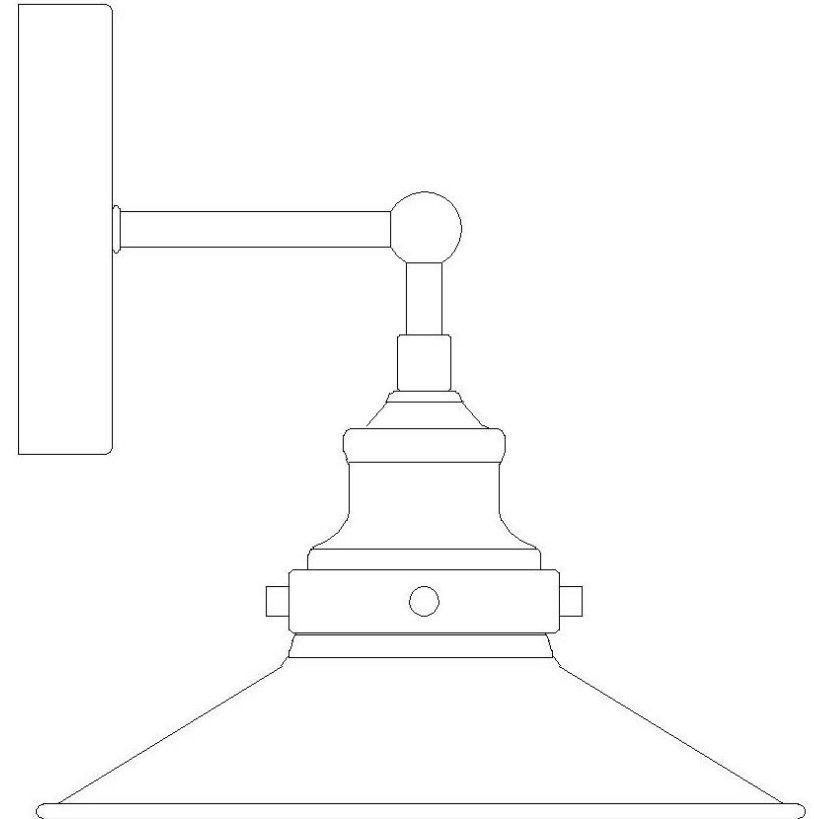
Made in China

John Lewis

## User manual

Tobias nickel

Wall light







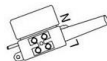

Thank you for purchasing this Tobias nickel wall light.  
Please read the instructions carefully before use to ensure safe and satisfactory operation of this product.  
Please keep these instructions for future reference.

Warnings!

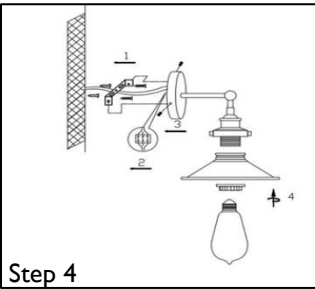
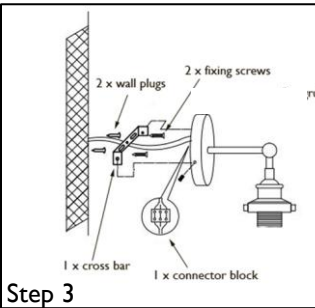
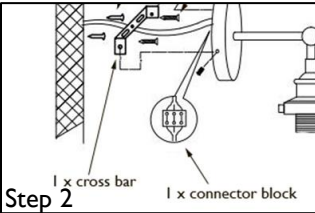
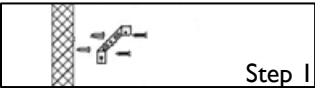
This product is Class I and must be earthed.  
This fitting should be fitted in accordance with IEE Regulations and the Building Regulations. If in any doubt, or where required by law, consult a competent person who is registered with an electrical self-certification scheme. Further information is available online or from your Local Authority. To prevent electric shock, switch off at the mains supply before installing or maintaining this fitting. Ensure other persons cannot restore the electricity supply without your knowledge.  
If you are in any doubt, please consult a qualified electrician.  
If replacing an existing fitting, make a note of the connections.  
Always use the correct type and power bulb. Never exceed the power stated.  
When changing a bulb, always switch off at the mains and allow the old bulb to cool down before handling. Dispose of used bulbs carefully.  
**Caution! The bulb and surrounding parts can become hot during use**

Care instructions

We recommend cleaning with a soft dry cloth.  
Do not use abrasive materials as these will damage the finish.  
Indoors use only.  
Replace bulbs from John Lewis or established brand of the same type and compatibility.

Parts list					
		Qty			Qty
A		2	D		1
B		2	E		1
C		1	F		1

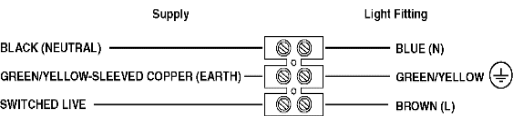
Assembly



Ensure the mains electricity supply switched off at the fuse board.

Step 1  
Ensure that the bracket (supplied) is fixed to a wooden joist, or use a suitable fixing to the wall which will support the weight of the fitting.

Step 2  
Connect cables or terminals as shown below.



Check all wires are tight in the terminal block and no loose strands are left out.  
Cover with insulating tape (not included)

Step 3  
Attach wall light to fixing bracket as shown in the diagram.

Step 4  
Attach the correct type and wattage bulb to the lamp holder (bulb not included).  
**The maximum power indicated must not be exceeded.**

Switch on the electricity supply at the fuse board.