

John Lewis

User manual Pluto 6 light Ceiling pendant

Recommended bulb:

6 x 3-6W ES energy efficient dimmable LED candle bulb

or

6 x 28W ES eco halogen candle bulb

Bulbs not included

Specifications:

Max. power: 40W


Voltage: 220~240V, 50/60Hz

IP rating: 20

Weight: 5.55kg



Please retain these instructions for future reference.

This symbol  indicates that this product should not be treated as normal household waste and it should be recycled. John Lewis do not operate instore take back, but as members of the Distributor Take Back scheme have funded the development and upgrade of recycling facilities across the UK. Please take it to your nearest collection facility or for further details contact your local council or visit www.recycle-more.co.uk.

We have taken great care to ensure that this product reaches you in perfect condition.

However, should any parts be damaged or missing please e-mail

lightingparts@JLPspares.co.uk

Trouble shooting:

Why is the light not working when switched on?

Check your power supply is switched on

Turn off light and check that the bulb is inserted correctly

Check the bulb is still in working order.

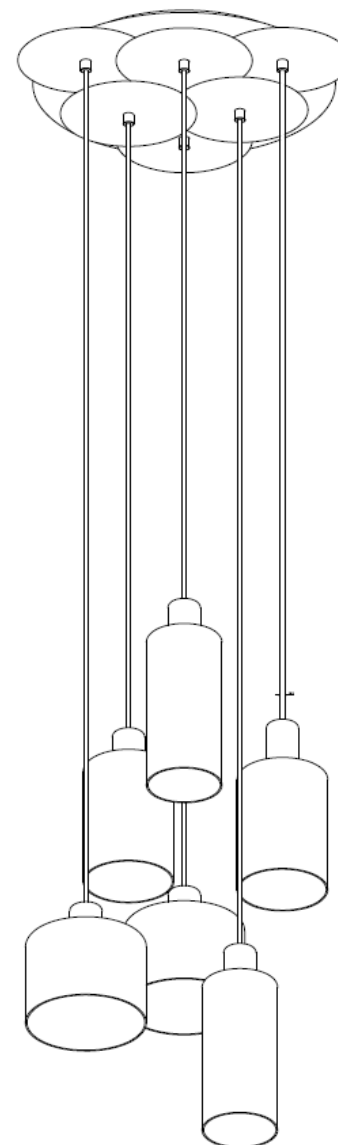
John Lewis Partnership

171 Victoria Street

London SW1E 5NN

johnlewis.com

Made in China



Thank you for purchasing this Pluto 6-light ceiling light.
Please read the instructions carefully before use to ensure safe and satisfactory operation of this product.
Please retain these instructions for future reference.

Warnings!

The fitting is class II.

This fitting should be fitted in accordance with IEE Regulations and the Building Regulations. If in any doubt, or where required by law, consult a competent person who is registered with an electrical self-certification scheme. Further information is available online or from your Local Authority.

To prevent electric shock switch off at the mains supply before installing or maintaining this fitting. Ensure other persons cannot restore the electricity supply without your knowledge.

If you are in any doubt, please consult a qualified electrician.

If replacing an existing fitting, make a note of the connections.

Always use the correct type and wattage bulb. Never exceed the wattage stated.

When changing a bulb, always switch off at the mains and allow the old bulb to cool down before handling. Dispose of used bulbs carefully.

Caution! The bulb and surrounding parts can become hot during use

Care instructions

We recommend cleaning with a soft dry cloth.







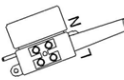
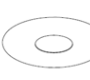



Do not use abrasive materials as these will damage the finish.

Replace bulbs from John Lewis or established brand of the same type and compatibility.

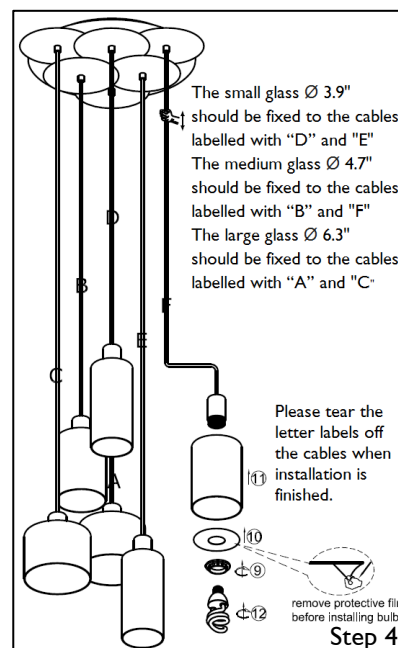
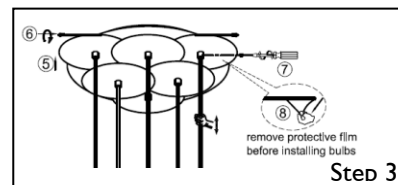
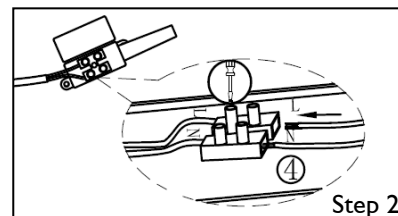
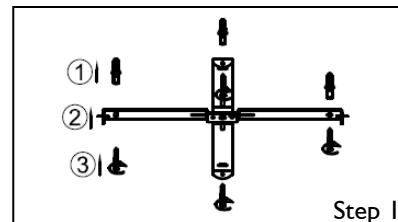
Indoors use only.

Dimmable.

Part list

	Parts list	Qty		Parts list	Qty		Parts list	Qty
A		2	E		2	I		2
B		2	F		2	J		2
C		1	G		2	K		2
D		1	H		1			

Assembly



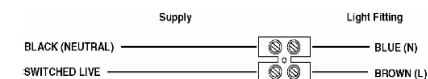
Ensure the house electricity supply is switched off at the fuse board.

Step 1

Ensure that the bracket (supplied) is fixed to a wooden joist, or use a suitable fixing to the ceiling which will support the weight of the fitting.

Step 2

Connect cables or terminals as shown below



Check all wires are tight in the terminal block, and no loose strands are left out.

Cover with insulating tape (not included).

Step 3

Push up ceiling plate and secure with metal grub screws (B).

Loosen plastic grub screws on the ceiling plates (7) and adjust the cables to the required length. Feed the cables through the ceiling plates and retighten the grub screws. Remove protective (8) film before installing bulbs (not included).

Step 4

Place glass shade over lamp holders and secure with washer (10) and shade ring (9).

Fit the bulb type / wattage (rated power) as indicated on the luminaire and as per and as indicated in specifications above.

The maximum power indicated must not be exceeded.

Switch on the electricity at the fuse board.