

NOVITA

NORDIC WOOL: C2C, CROCHETED PILLOWCASE



NOVITA NORDIC WOOL
SNOWFLAKE - C2C, CROCHETED PILLOWCASE

Designer Sisko Sälpäki

Size approx. 40 cm x 40 cm / 15¾ in x 15¾ in

Demand Novita Nordic Wool

(590) Dark Ruby 250 g and

(010) Off White less than 50 g

Crochet hook 4–4½ mm (UK 7–8 / US G-6 or 7) or size needed.

Other supplies Pillow 40 cm x 40 cm / 15¾ in x 15¾ in

Crochet pattern Corner to corner crochet (C2C): follow the drawings and the written instructions.

Gauge Approx. 7 treble groups (horizontally) = 10 cm / 4 in.

Front piece

Start crocheting from the lower right corner (see chart).

Row 1: (see drawing I) using the Dark Ruby yarn, chain 6 for the beginning chain. Work 1 treble (tr) into the 4th ch st from the hook and 1 tr into each of the other 2 remaining ch sts (= 3 trs). Turn work.

Row 2: ch6, work 1 tr into the 4th ch st from the hook and 1 tr into the remaining 2 ch sts on the chain (= 3 trs), work 1 slip stitch (sl st) + ch3 + 3 trs into the chain arch on row 1. Turn work.

Row 3: ch6, work 1 tr into the 4th ch st from the hook and 1 tr into the remaining 2 ch sts (= 3 trs), work 1 sl st + ch3 + 3 trs into the chain arch on row 2. Work 1 sl st + ch3 + 3 trs into the next chain arch on row 2. Turn work.

Row 4: ch6, work 1 tr into the 4th ch st from the hook and 1 tr into the remaining 2 ch sts (= 3 trs), work 1 sl st + ch3 + 3 trs into the chain arch on row 3. *Work 1 sl st + ch3 + 3 trs into the next chain arch on row 3*, repeat *–* once more. Turn work.

One group of 3 trs increased on each row. Continue in this manner and work rows 5–57 of the chart.

Note: When changing the colour, use the new colour for the last part of the last treble on the previous square as well the slip stitch joining the squares. Carry the contrasting colour on the WS, occasionally twisting it together with the other yarn. You may need several smaller balls of both colours to avoid long floats.

When you have worked row 29, begin decreases at both ends following drawing II. Work the decreases on all rows until there are 57 rows in total and you have decreased all the treble groups. Break the yarn.

Back piece

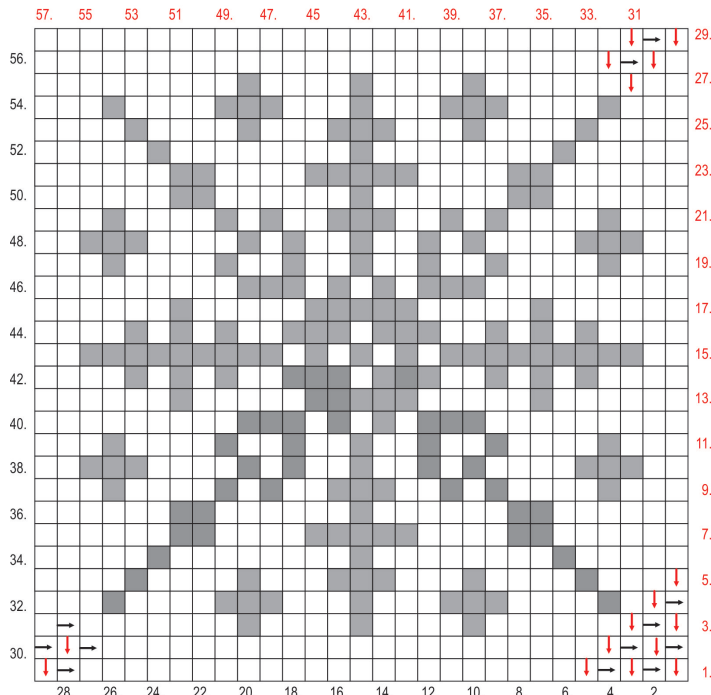
Work as you did the front piece but use the Dark Ruby yarn throughout.

Finishing

Lightly steam the pieces.

Sew the pieces together on three sides. Place the pillow inside the pillowcase and sew the last seam.

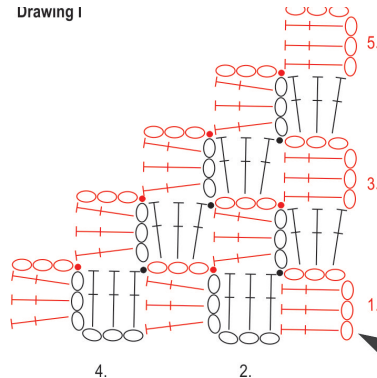
Chart



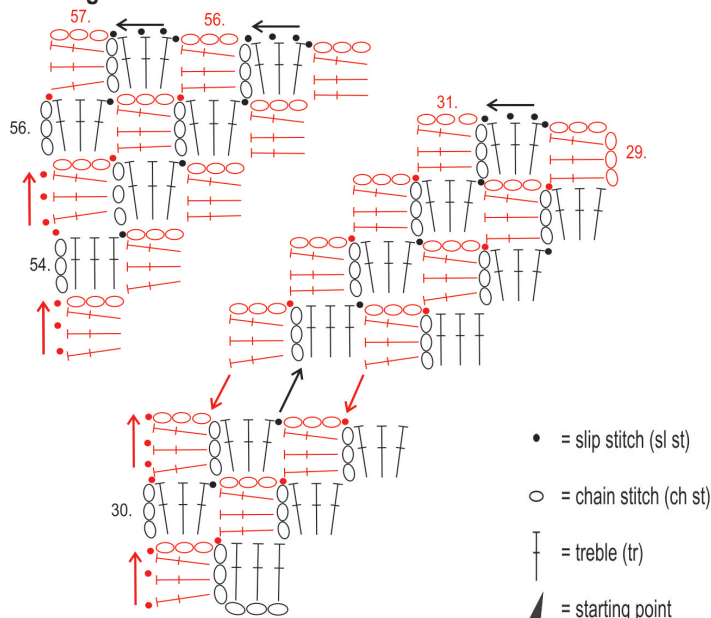
□ = treble group, Dark Ruby

■ = treble group, Off White

Drawing I



Drawing II



- = slip stitch (sl st)
- = chain stitch (ch st)
- ↑ = treble (tr)
- ▲ = starting point