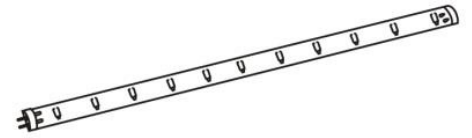


# 1 x VIVA LED FLEXIBLE STRIP LIGHT



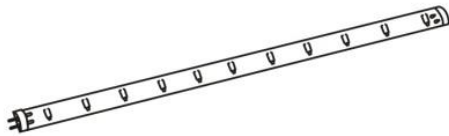
## INSTALLATION INSTRUCTIONS

**CODE: SE10310CW/WW, SE10312CW/WW, SE10311CW/WW**

**IMPORTANT:** please read these instructions before commencing installation and retain for future reference.

### Components

### Tools required



1 x Flexible strip



1 x End cap



1 x instructions



10mm Drill Bit



Power Drill

### Important safety information

Please read these instructions carefully before attempting to install this product. It is advisable to keep these instructions in a safe place for further reference.

**We recommend that you consult a qualified electrician. All electrical installations must be carried out in accordance with current IEE wiring regulations (BS7671).**

These products must not be modified, if any modifications are made, it may invalidate the warranty and may render the product unsafe. These LED lights operate low voltage (12V).

**Do not wire the individual LED light fittings directly to the mains. This product is for indoor use only. Keep out of moisture and use only in dry rooms.**

- If in doubt installation must be carried out by a qualified electrician.
- Install on smooth flat surface(s) only.
- Make sure that the appropriate LED driver is used with this flexible strip.
- The SE10314 driver connection lead is required to use this product.

Model	Rated input	Max. Linkabe No.
SE10310	12VDC	15pcs
SE10312	12VDC	4pcs
SE10311	12VDC	2pcs

### Safety instructions

1. Before commencing installation or maintenance, isolate the main electrical supply for the appropriate circuit at the fuse board.
2. This product is only suitable for connecting to a 240V 50Hz supply with use of a 12V driver.
3. The light should be mounted onto a secure surface.
4. Never exceed the total output of the LED driver you are using.
5. Suitable for furniture lighting.
6. When the lamp expires the fitting must be replaced .
7. Class III safety extra low voltage (SELV).

#### Waste Electrical & Electronic Equipment (WEEE)

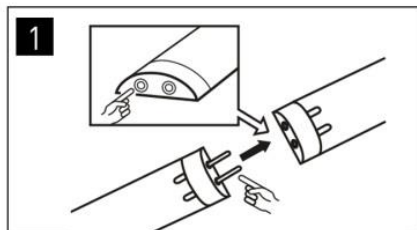
The Symbol on the product, or on the document accompanying the product, the crossed out wheellie bin symbol, indicated that this product may not be treated as household waste. Instead it shall be handed over to the applicable collection point for the recycling of electrical and electronic waste.



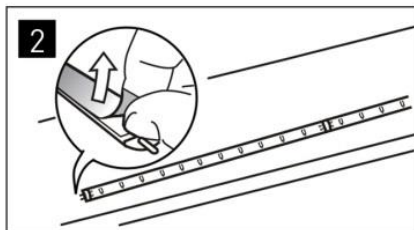
**RoHS** ✓  
Compliant



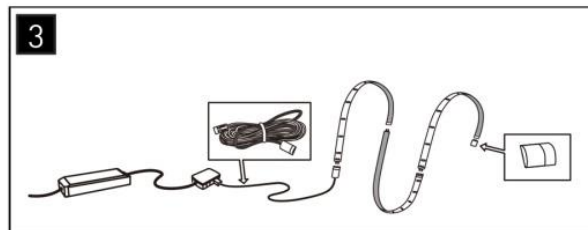
**Installation**



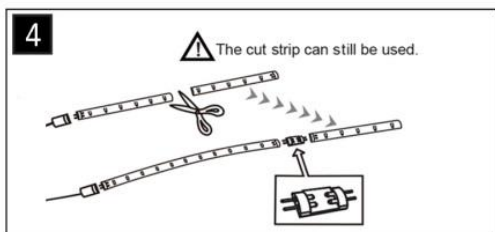
Fittings can be directly interlinked via the male & female connectors on each fitting. Interlink fittings as required before beginning installation.



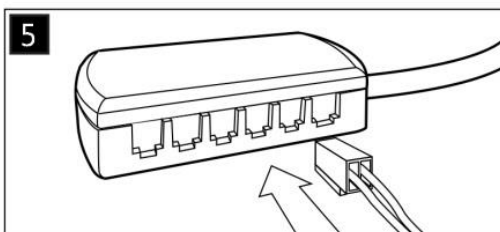
Peel the backing off all linked strips to reveal the 3M adhesive coating on the back of the strip. Carefully secure the strip to the surface in the required position.



The last strip in the run should be connected to the driver connection lead SE10314(a). The driver lead connects into one of the ports on the distribution block of the driver. Finally replace the end cap (b) to protect the end of the fitting.

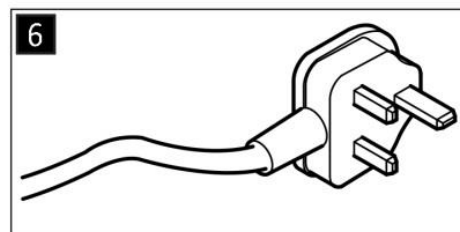


The flexible strip can be cut once. Re-use a cut section of the strip ONCE using the mini-cut connector (SE10318MCC)



Plug the white connector on the end of the driver connection cable(s) into the 12V LED driver distributor block. Beware not to exceed the wattage of the LED driver, the max wattage will be displayed on the LED driver and on the light unit fitting it will display the wattage requirement.

*If hiding driver in cabinet use hole cut between: 8mm and 10mm*



Finally wire the LED driver to 240V mains supply or 13A plug top.

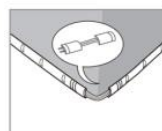
**Accessories listing**



\*This item is required to run the flexible strip.  
**SE10314**  
2.5m Driver Connection



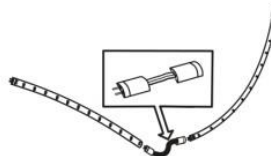
**SE10316**  
50mm Corner Connection Lead



Get around a 90 degree bend without breaking the run of strips running from one driver connection lead.



**SE10317**  
1500mm Inter Connecting Lead  
use to get around appliances without breaking the run of strips.



**SE10318MCC**  
Cut Joining Connector



The driver connection lead is an essential accessory to power EACH RUN of the flexible LED strip light.

**Maintenance & Care**

- Ensure that the power is disconnected prior to cleaning.
- To keep the finish of this product, wipe over with soft cloth periodically.
- Do not use harsh chemical solvents, it may dis-colour or damage the finish.