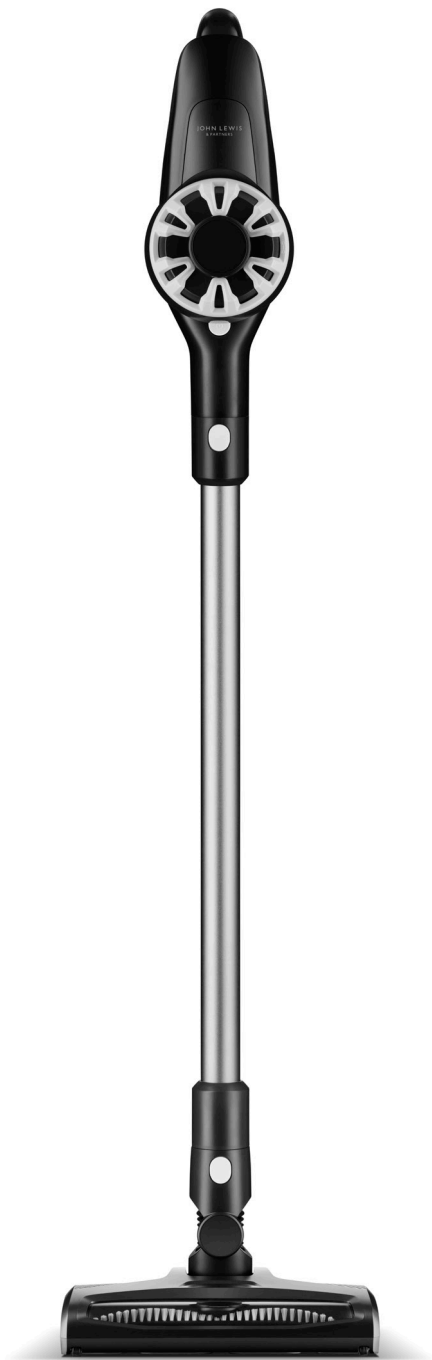




John Lewis

Instruction manual

2 in 1 Cordless vacuum cleaner



85567803





Contents

3	Important safety information
4	Electrical safety
5	Safety during use
6	Handling rechargeable batteries
8	Approved use
8	Before first use
9	Parts list
10	Diagram
11	Attachments
12	Starting up
12	Assembly
13	Handheld unit
13	Charging the battery
14	Using the appliance
16	Cleaning and maintenance
18	Troubleshooting
19	Technical specifications
19	Servicing and disposal
19	Disposal of batteries
20	Guarantee



Important safety information

Thank you for purchasing this John Lewis 2-in-1 Cordless vacuum cleaner. Please read the instructions and warnings carefully to ensure a long life for your product and safe usage. This instruction leaflet must be retained with the product for future reference. These warnings have been provided in the interest of safety. You **MUST** read them carefully before using the appliance.

If you are unsure of what any of these warnings mean, please contact your nearest John Lewis branch or John Lewis Technical Support on 0330 1230106.

This product is not intended for use by persons with reduced physical, sensory or mental capabilities, unless they are properly supervised or given instructions concerning the safe use of the item by a person responsible for their wellbeing.

- Never allow children to play with the appliance.
- Cleaning and maintenance should not be performed by children.
- Store the appliance and power cable out of reach of children and animals.



Please note that the illustrations in these operating instructions are intended as a guide to correct usage. Some details may deviate from the original product.

Electrical safety

Never use the appliance if it has been dropped or if any part of it is damaged. Before use, check the power cable. If the power cable is damaged, it must be replaced with a cable obtained from the product manufacturer.

Only use the adapter in power sockets where the electrical voltage matches the specification.

- When you unplug the adapter, hold the adapter and not the cable.
- Do not allow the power cable to run across sharp metal edges, do not place heavy objects on it or expose it to heat.
- Do not bend, twist or knot the power cable. Never wrap the power cable around the appliance or adapter.



- Do not immerse the appliance, adapter or power cable in water or other liquids.
- Before cleaning the appliance, ensure that it is switched off and disconnected from the mains.
- Only charge the battery with the supplied adaptor with charging cable or the appliance's charging station.

Always use the original batteries. Other batteries will impair the appliance's safety.

- Do not use the appliance when it is connected to the adapter or to the mains.

Safety during use

- Ensure an adequate distance between the appliance and heat sources such as gas fires, hotplates, ovens and open flames to prevent damage.
- The appliance is not suitable for outdoor use. Store it in a dry place.
- Do not use the appliance in rooms where there are flammable or toxic substances or fumes.
- Do not touch the appliance, the adapter or the plug with wet hands.
- Keep body parts and clothing away from the appliance's moving parts and apertures.



- Do not allow the power brushes to run over cables.
- Never insert any objects into the appliance's apertures. Do not use the appliance if an aperture is blocked.
- Never use the appliance without the dust container and filter.
- Switch the appliance off before changing accessories.
- Check the appliance each time you use it and do not use it if it is damaged.
- Never touch the rotating brush.

Handling rechargeable batteries



ATTENTION:

- If a battery leaks, avoid contact between battery acid and skin, eyes and mucous membranes. If contact does occur, wash the affected areas immediately with plenty of clean water and seek medical attention.
- Never open the battery case or expose it to liquids.
- Do not expose the battery to strong sunlight, heat or fire.



CAUTION: Plastic wrapping and bags can be dangerous. To avoid danger of suffocation, keep them away from children and pets.



WARNING! Failure to follow these instructions may lead to serious injury or death.
CAUTION! Failure to follow these instructions may lead to injury. ATTENTION!
Damage to property could occur.



Approved use

Only use the appliance as described in the operating instructions, with its original accessories. All other uses are regarded as improper. The appliance is intended for home use only. It is not suitable for commercial or industrial use. It must only be used for the cleaning of dry surfaces.

This appliance is not suitable for:

- vacuuming people, animals, plants or garments which are being worn;
- vacuuming hot ash/coals, cigarettes, matches or any other combustible or flammable substances;
- vacuuming up water or other liquids;
- vacuuming very fine dust, such as concrete dust or ash.

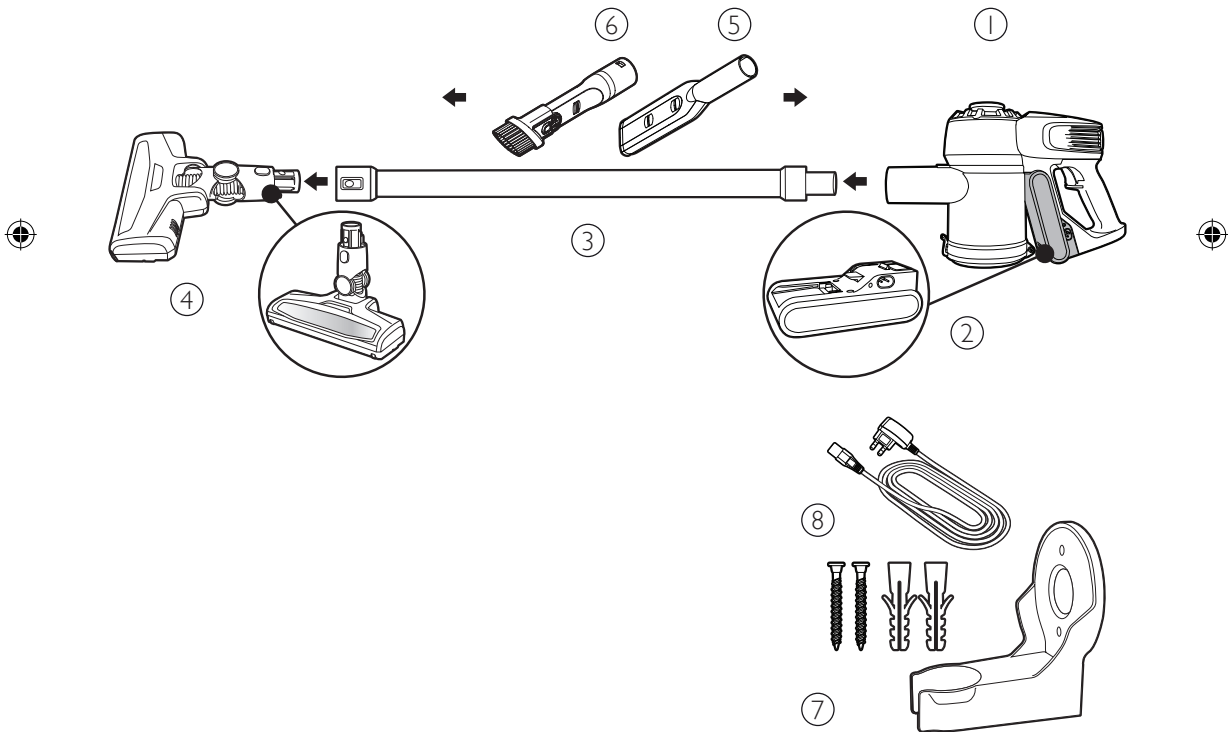
Before first use

- Check that the set includes all parts and inspect them for damage occurring in transit. The contents of the set that you have purchased is indicated on the packaging or a separate insert.
- Remove the packaging and any labels attached to the product.
- Insert the battery and charge it.



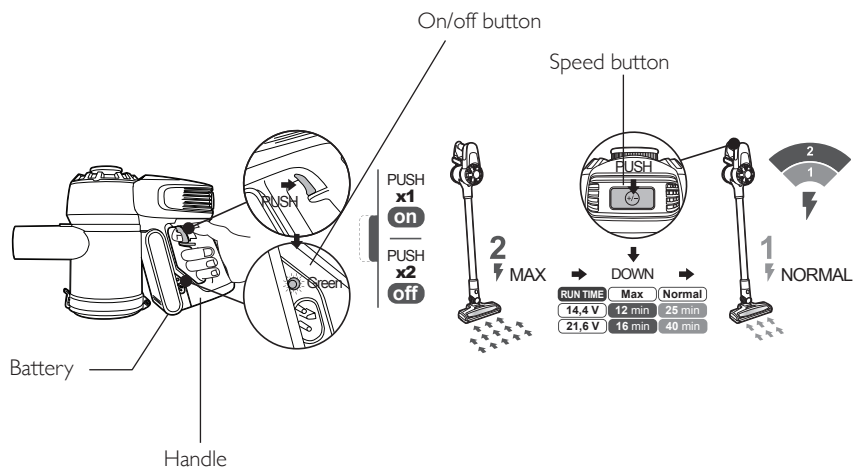
Parts list

- ① Main unit and handheld
- ② Rechargeable battery
- ③ Extension tube
- ④ Motorised dual floor power brush
- ⑤ Upholstery nozzle
- ⑥ 2-in-1 dusting brush & crevice nozzle
- ⑦ Wall mount holder
- ⑧ Power supply

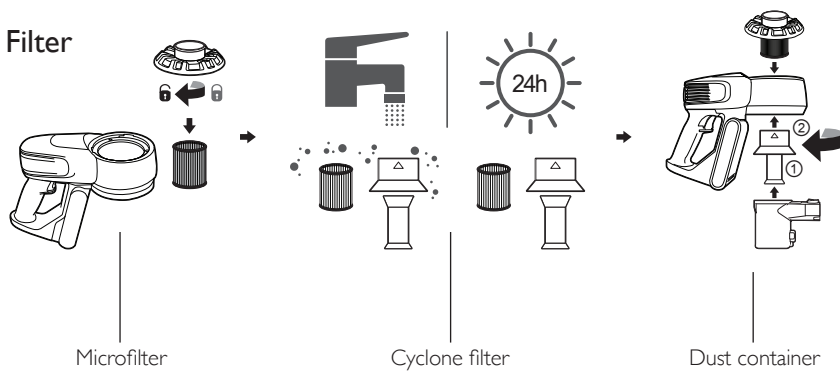




Handheld unit

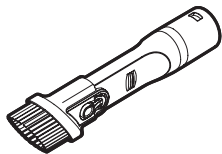


Filter



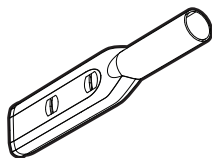


Attachments



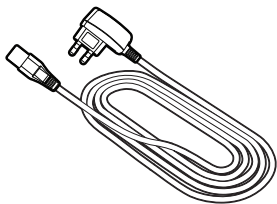
2-in-1 combi brush

- For vacuuming upholstered furniture and curtains.
- Only for use with the handheld unit.
- The brush frame can be moved by pressing the release button.



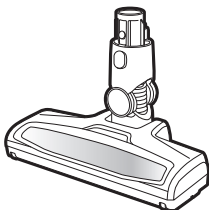
Crevice nozzle

- For cleaning narrow areas, corners and niches.
- Only for use with the handheld unit.



Adaptor with charging cable

- To connect the battery charging unit, charging station or handheld unit to the mains power.

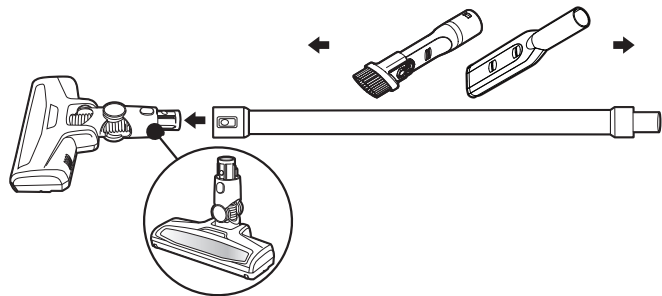


Motorised power brush

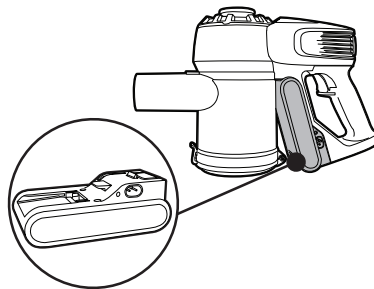
- Only for use with the vacuum cleaner.
- Has an integral electric motor which rotates the brush at up to 2,800 rpm.
- For cleaning large areas.



Starting up Assembly

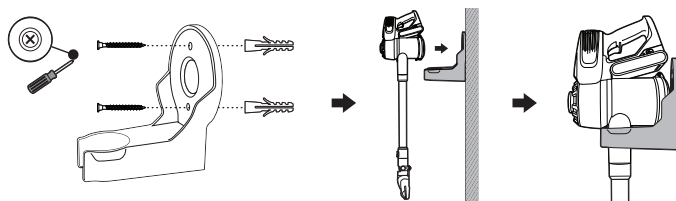


Attachment of the motorised power brush



Inserting the battery

1. Remove the handheld unit from the main unit.
2. Insert the battery in the designated recess on the reverse side of the handheld unit and press until you hear it click into place.



Wall mount fitting

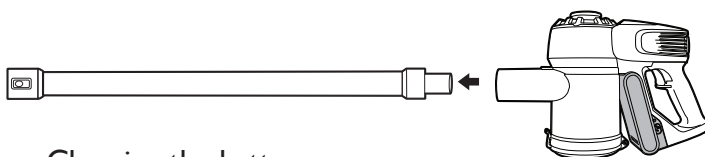
1. Mark the hole with a pencil using the wall mount as a template.
2. Fit suitable wall plugs.
3. Use a screwdriver to secure the wall mount with suitable screws.



Handheld unit

- Press the release button on the handle to remove the handheld unit. Now you can attach an accessory, such as the crevice nozzle.
- To replace it in the main unit, remove the accessory and place the lower end of the handheld unit into the designated recess, pressing down on the handle until you hear it click into place.

The handheld unit can also be plugged directly into the mains. The socket is on the side of the handheld unit's handle.



Charging the battery



Only charge the battery with the supplied charging cable. Always use the original batteries.

- Disconnect the cable from the mains when it is not in use.

The charging indicator light

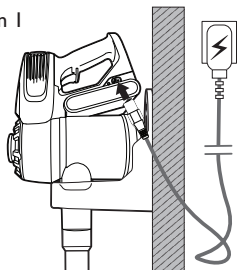
When charging:

- When the battery is low, the LED will blink red.
- A solid red LED is shown when charging.
- The vacuum will take approximately 5hrs to charge from empty.
- When the LED is solid green, the battery is fully charged.

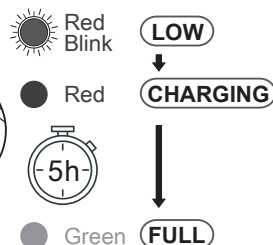
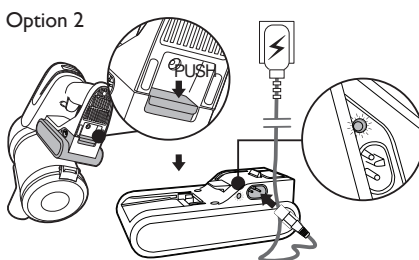
During use:

- The LED is green when in use.
- When the battery is low, the LED will blink red.

Option 1



Option 2

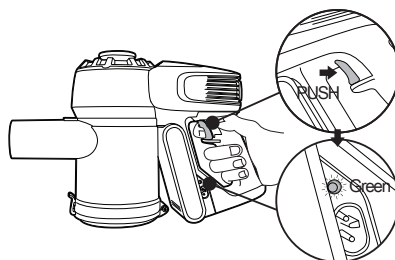




Using the appliance

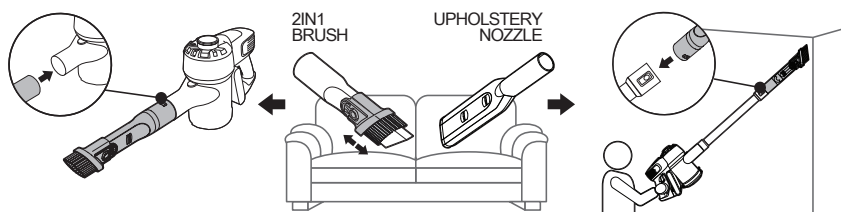
Switching the appliance on and off

- Press the on/off button. The vacuum cleaner will remain on until you switch it off again.
- The vacuum cleaner automatically starts up with maximum suction power.
- To reduce suction power, press the speed button.
- Press it again to restore maximum power.



Using the tools & accessories

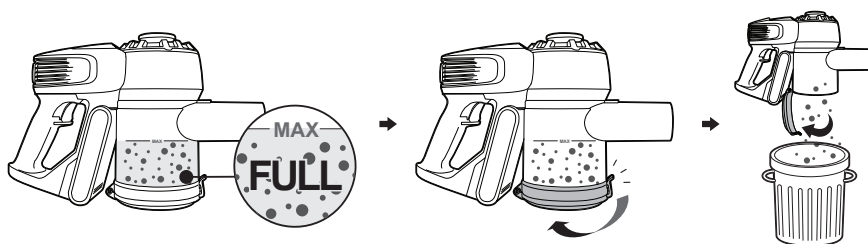
- Press the lock button on the tube to remove it.
- Push on the tool needed, till it clicks in place.
- For ceiling cleaning, remove the floor nozzle and attach the tool to the extension tube.



Cleaning carpets and hard flooring

Note: Test an inconspicuous area of flooring or carpet before using an accessory. Always follow the manufacturer's cleaning instructions.

Rotating brushes can cause damage to some floors and pilling to some carpets. Before cleaning polished floors (including wood and linoleum), ensure that there are no foreign bodies on the underside of the brush that might scratch flooring.



Emptying the dust container

1. Remove any accessories from the handheld unit and separate the handheld from the main unit.
2. Hold the appliance's dust container over a waste bin.
3. Press both release buttons next to the handheld unit's suction opening to release the dust.
4. Close the dust container flap again after emptying the container.

Cleaning and maintenance



WARNING: To avoid the risk of an electric shock, always switch off and unplug the appliance before cleaning it or performing maintenance. Never immerse any part of the appliance in water or other liquids.

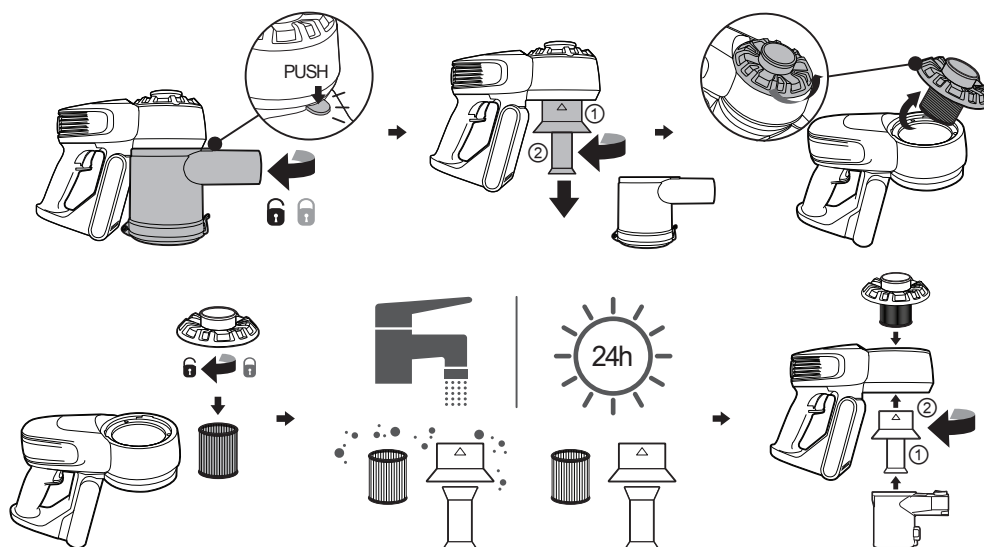
- Do not use soap or detergent to clean the filter.
- Allow the filter to dry naturally in the air.
Do not use a hair dryer or similar device.
- Do not use abrasive agents to clean the housing. Use a soft, damp cloth

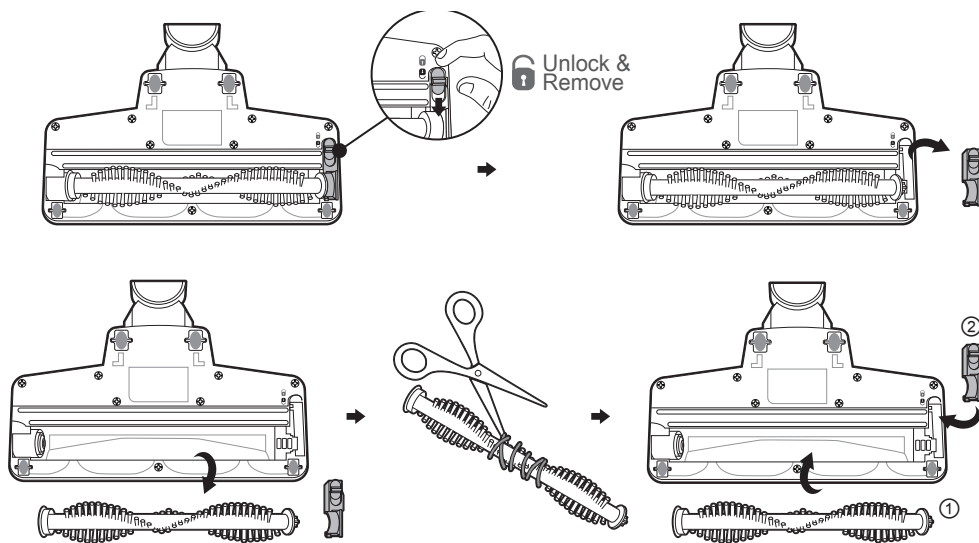
Cleaning the dust container and filter

The dust container can be detached from the main unit for cleaning.

1. Remove the handheld unit.
2. Press the release button to detach the dust container.
3. Remove the filters from the dust container:
Tap the filter at its base to get rid of dirt or rinse it under running water.
4. Clean the dust container with a brush or damp cloth.
5. Replace the clean filters in the dust container and reconnect it.

NOTE: Only use cold water to clean the filter and allow all parts to dry completely before reassembling.





Cleaning the motorised power brush

1. Remove the cover by pressing the latch towards the brush.
2. Remove the screw and side cover.
3. Release the brush in the direction indicated by the arrow and clean it. If necessary, use running water.
4. Always allow the brush to dry completely before replacing it.
5. Click the cover back into place. Replace the screw.

Changing the battery

1. Remove the handheld unit.
2. Switch off the appliance and remove the battery by pressing the locking mechanisms on each side.
3. Insert a new battery and click it into place.

NOTE: If the appliance is not used for a long time, store the semi-charged battery in a cool, dry place.



Troubleshooting



WARNING: Always switch off and unplug the appliance before attempting to resolve a problem.

The appliance doesn't work.	<ul style="list-style-type: none">- Check whether the battery is charged and charge it if necessary.- Check whether the brush is blocked and remove any dirt.
The battery isn't charging.	<ul style="list-style-type: none">- Check whether the charging cable is correctly inserted into the charging socket.- Check whether the adapter is correctly connected to a functioning mains socket.- The mains socket may not be working. Try another one.- Check whether you have used the correct adapter.
The suction is weak.	<ul style="list-style-type: none">- Check whether the suction opening on the dust container is blocked and clean it if necessary.- Empty the dust container and clean the filter.- Check for hairs or fibres wrapped around the brush.
The cleaning function doesn't work.	<ul style="list-style-type: none">- Check that the charging station is connected to a mains socket with power.- Check that the vacuum cleaner is correctly positioned in the charging station.

NOTE: If you cannot solve the problem, please contact a qualified technician. Never open the appliance's housing.




Technical specifications

Size: (H x W x D) 119 x 25 x 13 cm
Battery: 21.6 V Li-ion battery
Battery capacity: 2,000 mAh
Battery charging time: 5 hours
Operating time: max. 35 min (in max-mode: 16 min)
Dust container capacity: approx. 0.5L
ADAPTER
Power supply: IN 100 – 240 V ~50/60 Hz
Power supply: OUT 25-29 V, 800 mA

Servicing and disposal

This product should only be repaired or serviced by an authorised service engineer. Only genuine, approved spare parts should be used.

This  symbol indicates that this product should not be treated as normal household waste and should be recycled. John Lewis does not operate in-store take back, but as a member of the Distributor Take Back scheme has funded the development and upgrade of recycling facilities across the UK.

Please take your old appliance to your nearest collection facility.
For further details, contact your local council or visit: www.recycle-more.co.uk

Disposal of batteries

Before disposing of the appliance, remove the batteries and dispose of them separately. Batteries cannot be put in the household waste as they pose an environmental risk. Contact your local authority to find the nearest battery collection point in your area. Even empty batteries have a residual charge: before you dispose of them, cover the poles with insulating tape to prevent them short-circuiting, which could cause a fire or an explosion.



Guarantee

This item is guaranteed for two years in respect of defects due to faulty workmanship or materials. Proof of purchase is required for the validity of the guarantee.

This guarantee is no longer valid in the case of accidental damage, alteration, repair by any unauthorised persons or poor maintenance.

This guarantee in no way affects your statutory rights.

Please retain these instructions for future use.



John Lewis Partnership
171 Victoria Street
London SW1E 5NN
johnlewis.com

