

Caring for
your product

Indoor use only.
Non-Dimmable.
Replace bulbs from John Lewis or established brand of the same type and compatibility.
Recommend the fitting should be cleaned with a soft dry cloth.

Aftercare and
Troubleshooting

Why is the light not working when switched on?

Check your power supply is switched on
Turn off light and check that the bulb is inserted correctly
Check the bulb is still in working order.

If you experience any unresolvable technical issues with the product,
contact your nearest John Lewis & Partners shop or John Lewis &
Partner Technical Support on 03301 230106.

Specification


Recommended Bulb: G9 halogen or G9 LED
Max wattage: 28W each bulb
Max. power: 6x28W
Voltage: 220 –240V, 50/60Hz
IP rating: 20
Weight: 4.5kg



5 year guarantee

At John Lewis & Partners we test every light to high quality standards so
we are able to offer you a 5 year guarantee.

Recycling

This symbol  indicates that this product should not be treated as
household waste and it should be recycled. John Lewis & Partners do not
operate instore take back, but as members of the Distributor Take Back
scheme have funded the development and upgrade of recycling facilities
across the UK. Please take it to your nearest collection facility or for
further details contact your local council or visit www.recycle-more.co.uk.



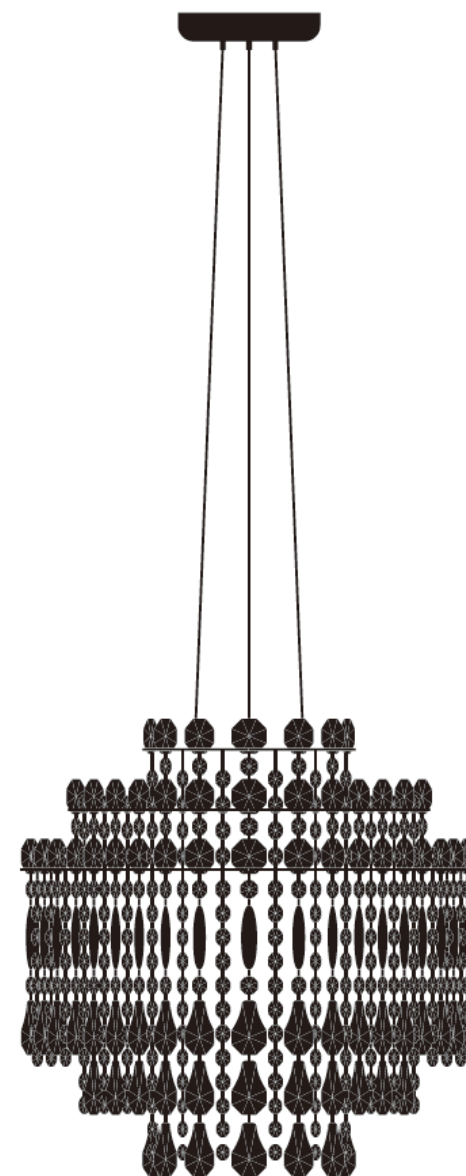
John Lewis Partnership
171 Victoria Street
London SW1E 5NN
johnlewis.com

Made in China

Please retain these instructions for future reference.

JOHN
LEWIS
& PARTNERS

ARABESQUE CRYSTAL CHANDELIER USER GUIDE



Introduction

Thank you for purchasing this Arabesque crystal chandelier
Please read the instructions carefully before use to ensure safe and satisfactory operation of this product.

Warnings



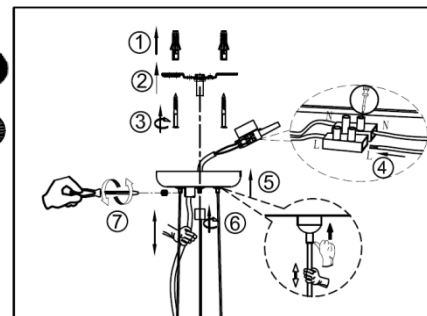
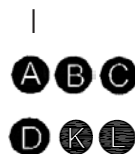
The fitting is class II.
This fitting should be fitted in accordance with IEE Regulations and the Building Regulations. If in any doubt, or where required by law, consult a competent person who is registered with an electrical self-certification scheme. Further information is available online or from your Local Authority.
To prevent electric shock switch off at the mains supply before installing or maintaining this fitting. Ensure other persons cannot restore the electricity supply without your knowledge.
If you are in any doubt, please consult a qualified electrician.
If replacing an existing fitting, make a note of the connections.
Always use the correct type and wattage bulb. Never exceed the wattage stated. When changing a bulb, always switch off at the mains and allow the old bulb to cool down before handling. Dispose of used bulbs carefully.
The flexible cable on this luminaire, if damaged, shall only be replaced by the manufacturer Or his service agent or a similar qualified person
It is the installer's responsibility to ensure that the fixings and plugs used are suitable for the surface you are fixing your product on.

CAUTION! The bulb and surrounding parts can become hot during use.

Parts list

Description	Image	Quantity
A Screw		2
B Flat head half tapping screw		2
C I07 bracket group		1
D Terminal block		1
E L189.6 Etch sheets chain		28
F L290.2 Etch sheets chain		20
G L394.2 Etch sheets chain		12
H L132.5 crystal beads chain		28
I L242 crystal beads chain		20
J L349 crystal beads chain		12
K φ 400 ceiling plate		1
L φ Screw		1

Product assembly



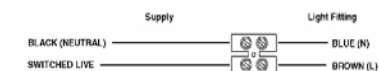
Ensure the house electricity supply is switched off at the fuse board.

Step 1

Ensure that the bracket (C) is fixed to a wooden joist, or use a suitable fixing (A) and (B), (L) to the ceiling which will support the weight of the fitting.

Step 2

Connect cables or terminals as shown below

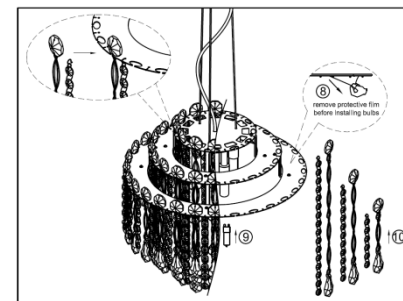


Check all wires are tight in the terminal block (D), and no loose strands are left out. Cover with insulating tape (not included).

Step 3

Push up the ceiling plate (K) and secure with grub screws provided.
To adjust the height of the fitting, loosen the plastic grub screw on the ceiling plate, adjust the cable to the required length, and then re-tighten grub screw.

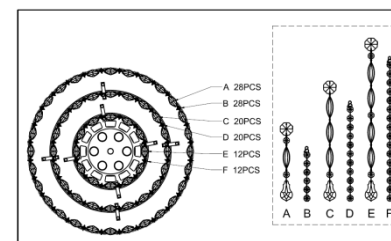
2



Step 4

Remove the protective film on the stainless steel.
Fit the bulb type/wattage (rated power) as indicated on the luminaires and as per and as indicated in specifications above.
The maximum power indicated must not be exceeded.

3



Step 5

Attach crystal chains on to the rings.

Switch on the electricity supply at the fuse board.