

Assembly instructions for Francesca Floor Lamp

Thank you for purchasing this Francesca Floor Lamp. Please read the instructions and warnings carefully before use to ensure safe and satisfactory operation of this product.

Warning

Please read these instructions carefully before commencing any work. Always use the correct type and wattage bulb. Never exceed the wattage stated. When changing the bulb, ensure the product is unplugged and always allow the old bulb to cool down before handling. Dispose of used bulbs carefully. Keep instructions for future reference.

Your standard lamp has been packaged as four parts to prevent damage during transit.

See overleaf for diagrams.

Please follow these assembly instructions carefully:

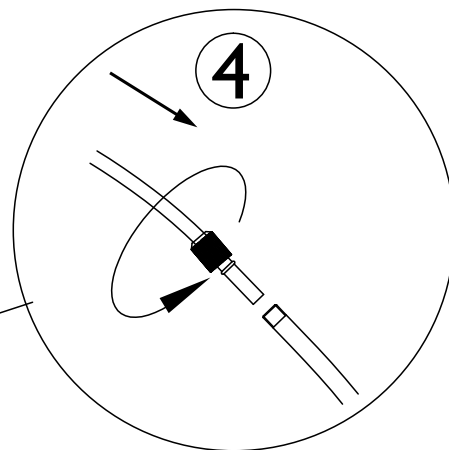
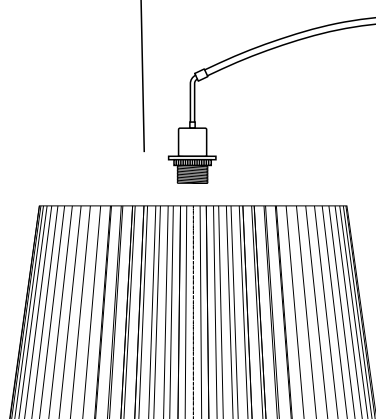
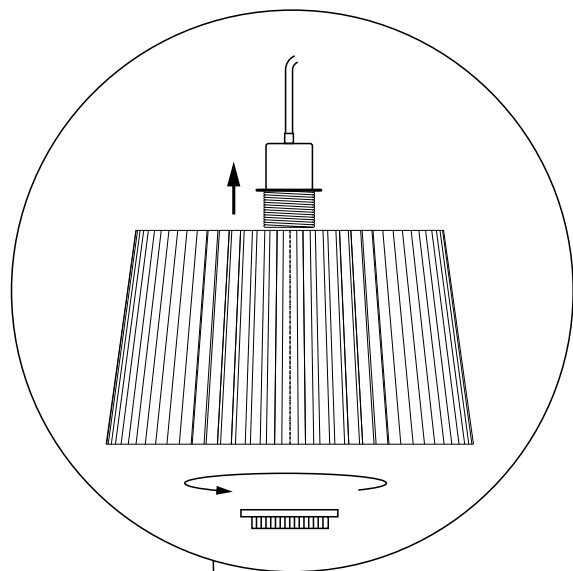
Remove all packaging from the base and the tubes.

- 1) Place base on a firm flat surface. Place straight tube onto the small stem on the base.
- 2) Secure in place with grub screws, using the allen key provided. Check grub screws are tight.
- 3) Take middle section of stem and locate into straight section. Secure in place by tightening the collar.
- 4) Take final stem section and locate into middle stem section. Secure in place by tightening the collar.
- 5) Remove the shade ring from the lampholder, place the shade over the lampholder and refit the shade ring. Tighten to secure the shade in place.
- 6) Fit a suitable 60W ES GLS light bulb or 12W energy saver light bulb. Do not exceed the recommended wattage as this may cause damage to the light fitting.

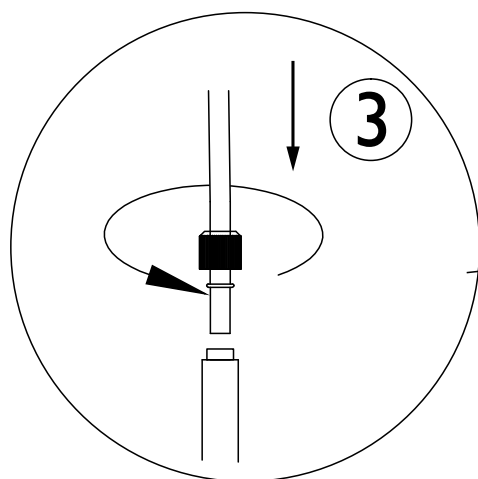
Your standard lamp is now ready for use.

Switch on using the floor switch.

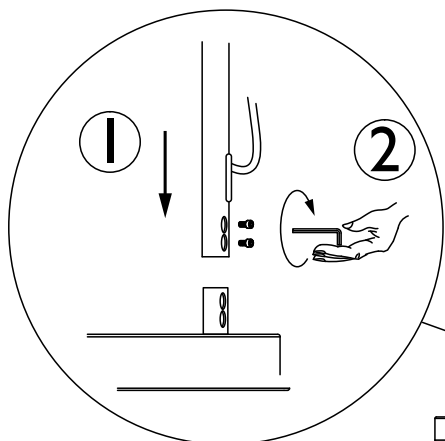
We have taken great care to ensure that this product reaches you in perfect condition. However, should any parts be damaged or missing please contact our Product Helpline on (01202) 690945. We will despatch to you, within 7 working days, your missing/damaged part. When phoning please ensure you have the following information available: Name and Address, Daytime Telephone Number, Store and Date of Purchase, Product Reference (inside ceiling cover or on box label), Description of Missing/Damaged Part. This does not affect your statutory rights.



④



③



①

②

①

②

