

# CORDLESS PLEATED BLIND

INSTRUCTION MANUAL

JOHN LEWIS  
& PARTNERS

INTRODUCTION


Thank you for purchasing this Pleated blind.  
Please read the instructions carefully before use  
to ensure safe and satisfactory operation of this  
product.

It is recommended that this blind should only be installed by persons competent in DIY. At John Lewis, we are committed to making great products possible. From our in-house Design Team, to our Buyers, we work together to bring great design to life. Our Product Technologists work collaboratively with our Buyers and suppliers to ensure the legality, safety and quality of the product we sell. We are all committed to designing and developing products to the highest industry standards.


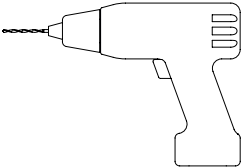
We hope you are happy with your product and welcome any feedback or comments you may have.

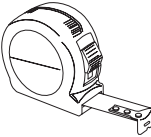

VIDEO INSTRUCTIONS

Scan the QR code to link to our online videos that guide you in getting a perfect fit for a pleated blind. Alternatively, follow the link [www.johnlewis.com/blindassembly](http://www.johnlewis.com/blindassembly)



TOOLS REQUIRED





PEOPLE TO ASSEMBLE

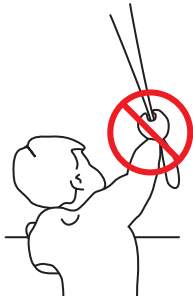
One person

TIME TO ASSEMBLE

1 Hour

---

## WARNINGS



- ⚠ Small parts – choking hazard.
- ⚠ Keep small parts out of reach of children
- ⚠ Ensure the product is fully assembled as illustrated before use.
- ⚠ Young children can be strangled by loops in pull cords, chains, tapes and inner cords that operate the product.
- ⚠ To avoid strangulation and entanglement, keep cords out of reach of children.
- ⚠ Cords may become wrapped around a child's neck.
- ⚠ Move beds, cots and furniture away from window covering cords.
- ⚠ Do not tie cords together. Make sure cords do not twist and create a loop.
- ⚠ The safety clips should be positioned high enough to be out of reach of small children yet accessible to adults.
- ⚠ All safety clips for blinds need to be fixed to a solid surface using a screw and fixing suitable for the wall or surface material – see guide to wall mounting and fixings on the last page. These items should not be glued or stuck in place.
- ⚠ The head rail should not be installed less than 1.5m from the floor.

---

## DO'S

- ✓ Please read all safety warnings and installation information fully before installation.
- ✓ This product should be fitted in accordance with the manufacturers fitting instructions.
- ✓ Check the pack to make sure you have all the parts listed.
- ✓ Take care when drilling on glazed tile surfaces in case the drill slips.
- ✓ Check that all screw and bolt assembly fittings are tightened and inspect on a regular basis.
- ✓ Use the safety device provided.
- ✓ Please read our guide on wall mounting and fixing on the inside back cover.

---

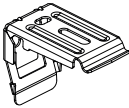
## DONT'S

- ✗ Do not over tighten screws or bolts.
- ✗ Do not use power tools to construct as over tightening and failure may occur.

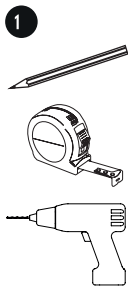
---

PARTS LIST


---

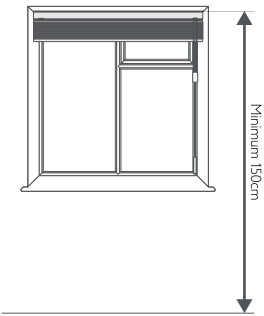
Code	Item	Quantity	Illustration
1	Headrail Bracket	x 2 65cm - 99cm x 3 100cm - 169cm x 4 170cm - 249cm x 5 250cm +	

1.  
Drilling holes  
for brackets

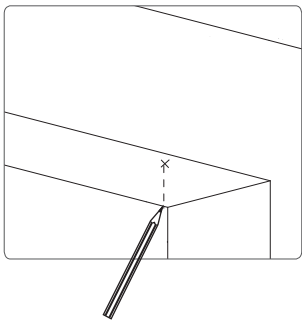


Use the brackets as templates and mark the hole positions with a pencil.  
Pre-drill the holes. (For more information on wall types and fixings, see page 08).  
Measure out 5cm from both ends to fix the brackets. If you have more than 2 brackets spread them evenly.

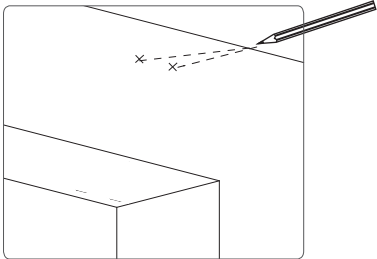
 For safety reasons, make sure the headrail is installed **at least** 150cm from the floor.



Face fitting

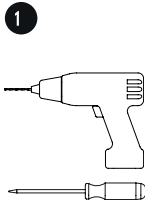


Top recess

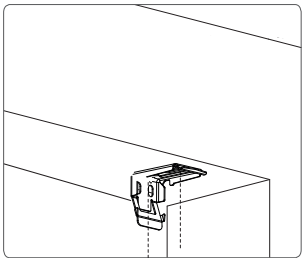


2.  
Installing the  
brackets.

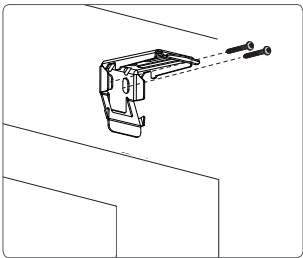
Position brackets over the pre drilled holes.  
Use a drill or a screwdriver to fix the brackets onto the wall.



Top recess



Face fitting

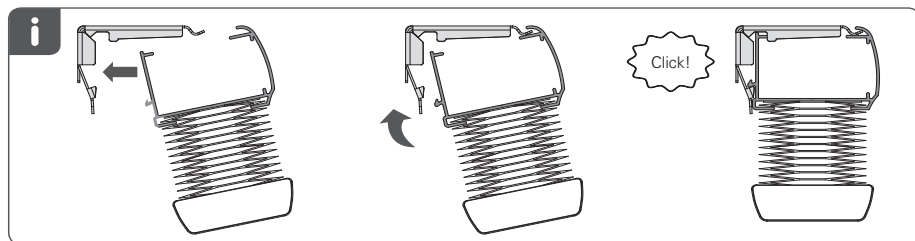
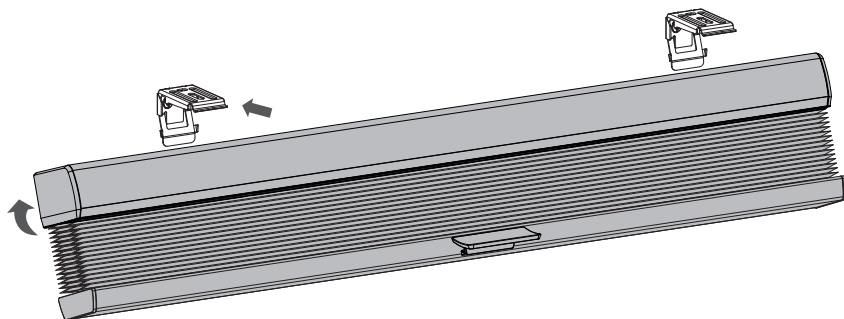


**Please note:** Fixings are not included.

### 3.

## Blind installation

To install the blind hook the headrail onto the bracket inbetween the lips. Insert a screwdriver behind the headrail and push the headrail up until you hear a 'Click' noise. The headrail is now secured.

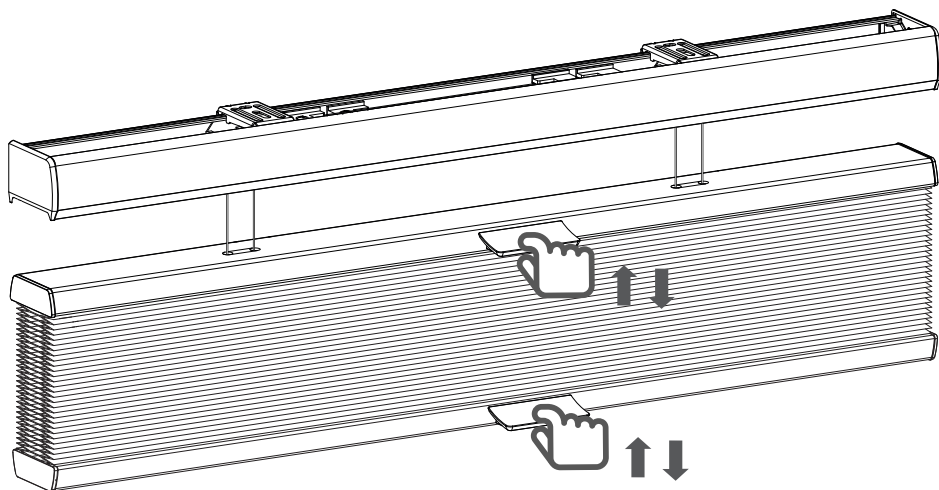
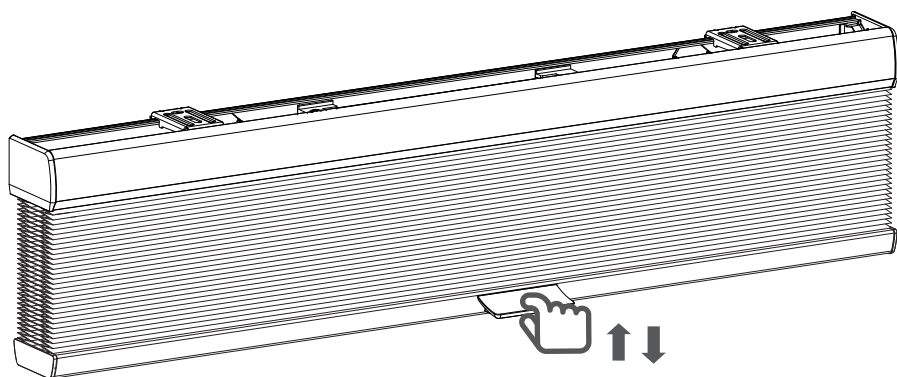


---

4.

## Operating the blind

To lower the blind, pull down using the plastic handle. The blind will stop in the position of your choosing. To raise the blind, push the bottom rail or handle.

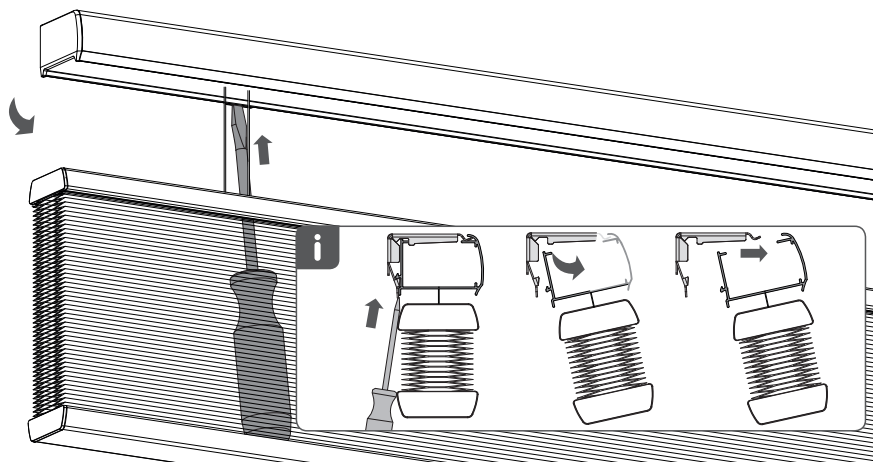


---

5.

## Removal

To lower the blind, pull down using the plastic handle. The blind will stop in the position of your choosing. To raise the blind, push the bottom rail or handle.



---

## PRODUCT INFORMATION

### CARING FOR YOUR PRODUCT

The fabric may be dusted using a damp cloth. The product is maintenance free however we recommend regular check are completed to ensure no components have been damaged, which could result in operating difficulties or case a safety risk.


Pleated blinds rely on fabric memory and tension to keep the pleats crisp. That is why opening and closing your blinds regularly is important.



---

## GUIDE TO WALL MOUNTING & FIXINGS

---

**KEY INFORMATION**  **Warning:** We do not provide you with any fixings. Please ensure you use the correct screws/fixings for your type of walls and seek professional advice if you are not sure.

Failure of the product due to incorrect fixings is the responsibility of the installer.

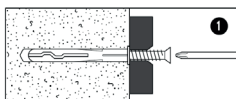
**Important** - When drilling into the walls always check that there are no hidden wires, pipes etc.

Take care when drilling on glazed tile surfaces in case the drill slips.

---

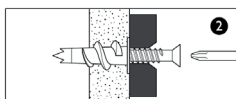
### FIXINGS

You can use one of the following types of wall plug if your walls are made of brick, breezeblock, concrete, stone or wood.



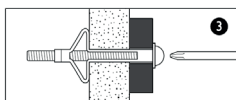
#### General Purpose wall plug

Generally aerated blocks should not be used to support heavy loads, use a specialist fitting in this case. For light loads, general – purpose wall plugs can be used.



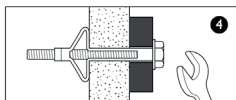
#### Plasterboard wall plug

For use when attaching light loads on to plasterboard partitions.



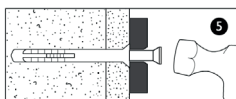
#### Cavity Fixing wall plug

For use with plasterboard partitions or hollow wooden doors.



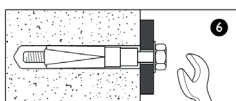
#### Cavity Fixing – Heavy Duty wall plug

For use when fitting or supporting heavy loads such as shelving, wall cabinets and coat racks.



#### Hammer Fixing wall plug

For use with walls stuck with plasterboard. The hammer fixing allows it to be fixed to the wall rather than the plasterboard. Always check the fixing is secure to the retaining wall.



#### Shield Anchor wall plug – Heavy loads

For use with heavier loads such as TV and Hi-Fi speakers and satellite dishes etc.





Please retain these instructions for future reference.

---

John Lewis Partnership  
171 Victoria Street  
London SW1E 5NN  
[johnlewis.com](http://johnlewis.com)

---

Made in Poland  
Batch code: