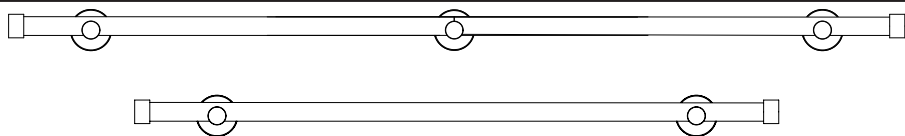


Eyelet Curtain Pole Kit

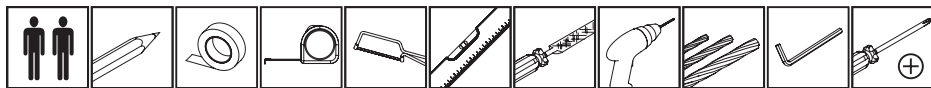
Thank you for purchasing this product. Please read the instructions carefully before use to ensure safe and satisfactory operation of this product.



Pre-assembly preparation

Please ensure instructions are read in full before attempting to assemble this product.

Necessary Tools



Please check the pack contents before attempting to assemble this product. A full checklist of components is given in this leaflet. If any components are missing, please contact the retailer from whom you bought this product.

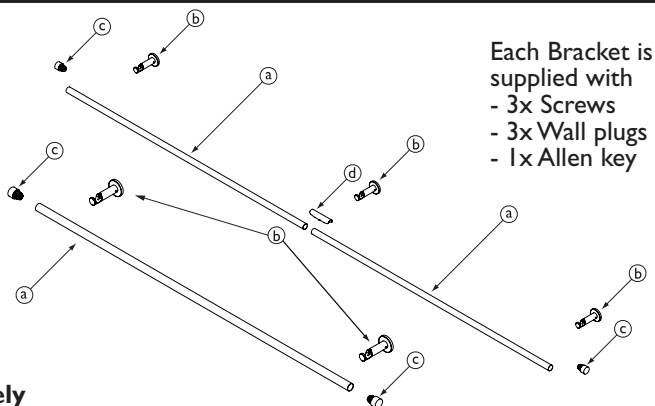
This product takes approximately **30 MINUTES** to assemble with **2 PEOPLE**.

Fittings and parts checklist

Quantities Required

Part	1.5m	3.0m
a Pole(s)	1	2x1.5m
b Brackets	2	3
c Finials	2	2
d Joiner	n/a	1

If required rings sold separately

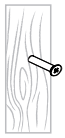


Recommended Maximum curtain weights

	Curtain Weights	
	1.5m	3.0m
2 Brackets	14kg	n/a
3 Brackets	n/a	14kg

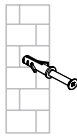
Recommended maximum curtain weight is calculated after fitting the pole to a secure wooden batten. If you are unsure if the product is suitable please ask a partner in your John Lewis store.

Wall fixing - if in doubt seek professional advice



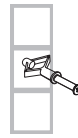
Wood

If fixing to wood make sure that it isn't chipboard as screws can easily pull away from the core structure



Brick or Masonry

Use an appropriate wall plug providing you are sure your wall is sound



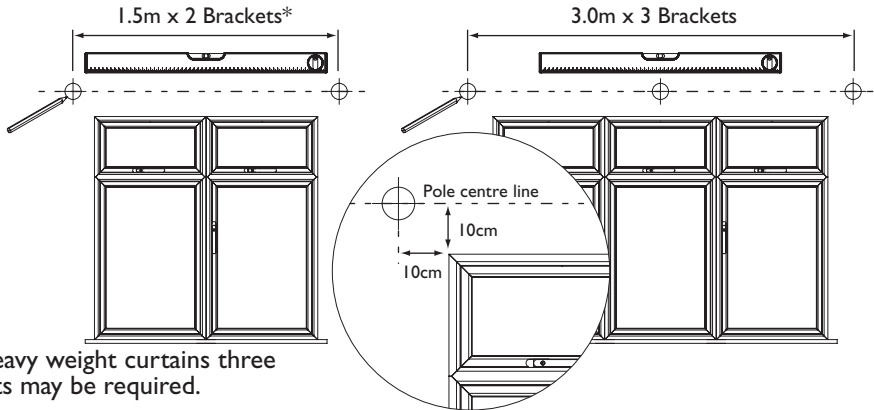
Cavity wall

Special toggle wall plugs are needed. Seek expert advice

Step by step assembly instructions

Step One

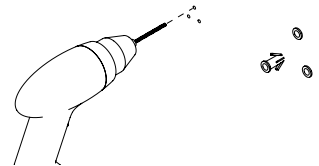
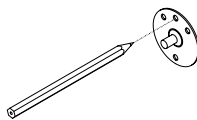
1. Measure windows.



*For heavy weight curtains three brackets may be required.

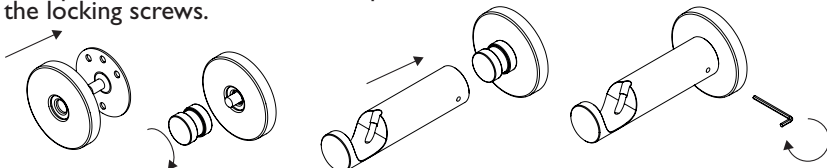
Step Two

1. Use the correct wall fixing for the application in which you are mounting your pole. If you are unsure please consult your local builders merchant or DIY store.
2. Use the wall mounting plate as a template to mark the bracket positions on to the wall.
3. Drill holes and fit correct plugs and screws.
4. Screw the wall mounting plate to wall.



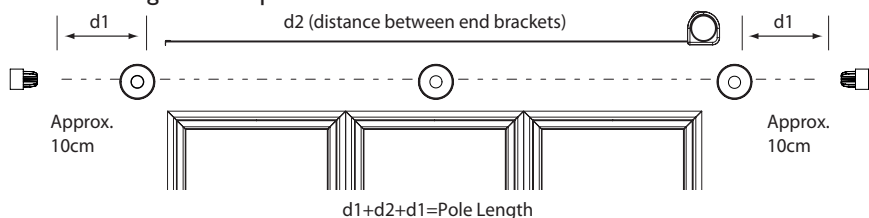
Step Three

1. Push the back plate cover on to the wall mounting plate.
2. Screw the fixing barrel on to the plate until it is tight
3. Slide the bracket on to the fixing barrel, ensuring that the base of the bracket is flush with the cover plate and the bracket faces upwards
4. Tighten the locking screws.

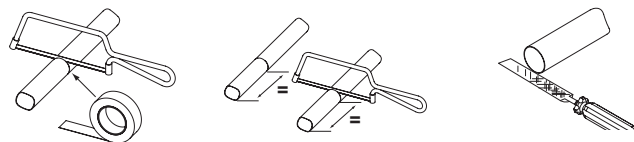


Step Four

1. Calculate the length of the pole.

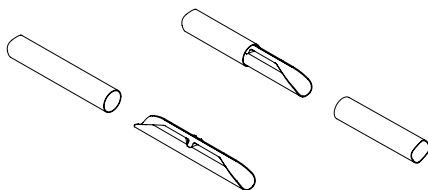


2. Mask the area to be cut to avoid damaging pole.
3. When using two poles cut equal lengths from each pole.
4. File sharp edges to avoid injury or damage to other components.



Step Five

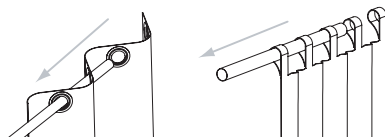
1. Join poles if required by sliding a joining piece into the uncut end of a pole.
2. Slide the second pole onto the joining piece taking care to push equal lengths of the joiner into each pole.
3. Always join the uncut ends of the pole.
4. Pole joints should always be at the half way point of the total length and supported with a bracket.



Step Six

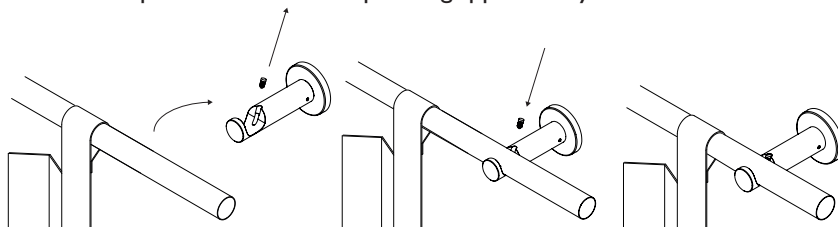
Eyelet & Tab Top Curtains

1. Slide the curtain onto the pole before fitting the pole to the brackets.
2. Leave the last eyelet or loop hanging from the end of the pole.
3. When using a centre bracket a curtain will need to be hung from each end of the pole.



Step Seven

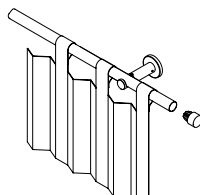
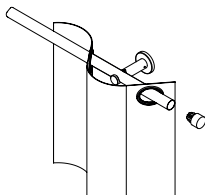
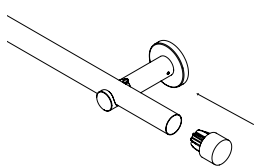
1. Remove the pole retainer
2. Place pole in bracket.
3. Re-insert the pole retainer till the pole is gripped firmly.



Step Eight

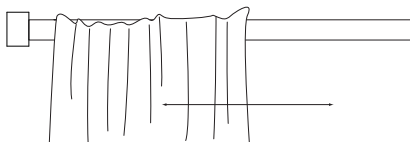
Eyelet & Tab Top Curtains - Fitting of the Finial

1. Position one loop or eyelet between the bracket and the finial.
2. Push the finial onto the end of the pole.



Step Nine

1. Test the installation by drawing the curtains across the pole.



Care and Maintenance

Please use a household spray polish to ensure free movement of the curtain along the pole.
Do not install in a high humidity environment, i.e. bathroom.

Safety Instructions

Only use a Step Ladder to install this product.

Do Not over reach. Always move the Step Ladder so that you are in a safe working position.

Do Not hold or lean on the track to support your weight.

We recommend you use two people for installation of larger tracks.

Take care when using power tools, use of a Residual Current Device (RCD) is recommended.

Always use eye protection when drilling.

Beware of hidden pipe runs and cables.

No liability will be accepted for damage or injury caused by incorrectly installed or assembled furniture.

PLEASE KEEP OUT OF THE REACH OF YOUNG CHILDREN.

SMALL PARTS - CHOKING HAZARD

PLEASE KEEP THESE INSTRUCTIONS FOR FUTURE REFERENCE

PLEASE KEEP THE BATCH CODE ON THE PACKAGING FOR FUTURE REFERENCE IF ANY QUERIES